

# Office for Lease Gigliotti Plaza

20120 Route 19, Cranberry Township PA 16066



**Paul Horan**  
Principal, Pittsburgh  
Office Agency  
412 515 8525  
paul.horan@colliers.com

 [CLICK HERE TO VIEW LISTING OR SCHEDULE A TOUR](#)

**752 SF & 4,220 SF**  
Now available

Excellent access to and  
visibility from Route 19!



## Hundreds of amenities within a 5-minute drive!

Gigliotti Plaza is located in the heart of Cranberry Township, a prominent shopping destination in Pittsburgh's North Hills submarket.

From your office at 20120 Route 19, you'll be able to walk to Cranberry Mall, which houses Giant Eagle and Aldi grocery stores, Starbucks cafe, a Marshall's, Petco, Hallmark, and Michael's retailer, as well as multiple small businesses.

Two minutes up the road is Cranberry Commons, where tenants can find a Target, TJ Maxx, Fresh Thyme market, Lowe's, Staples, and more.

Easily access dozens of fast casual and fine dining options within minutes of your office!



CLICK HERE TO SEE MORE OF WHAT'S NEARBY.



525 William Penn Place, Suite #3510  
Pittsburgh, PA 15219

[www.colliers.com/pittsburgh](http://www.colliers.com/pittsburgh)  
[pittsburghmarketing@colliers.com](mailto:pittsburghmarketing@colliers.com)

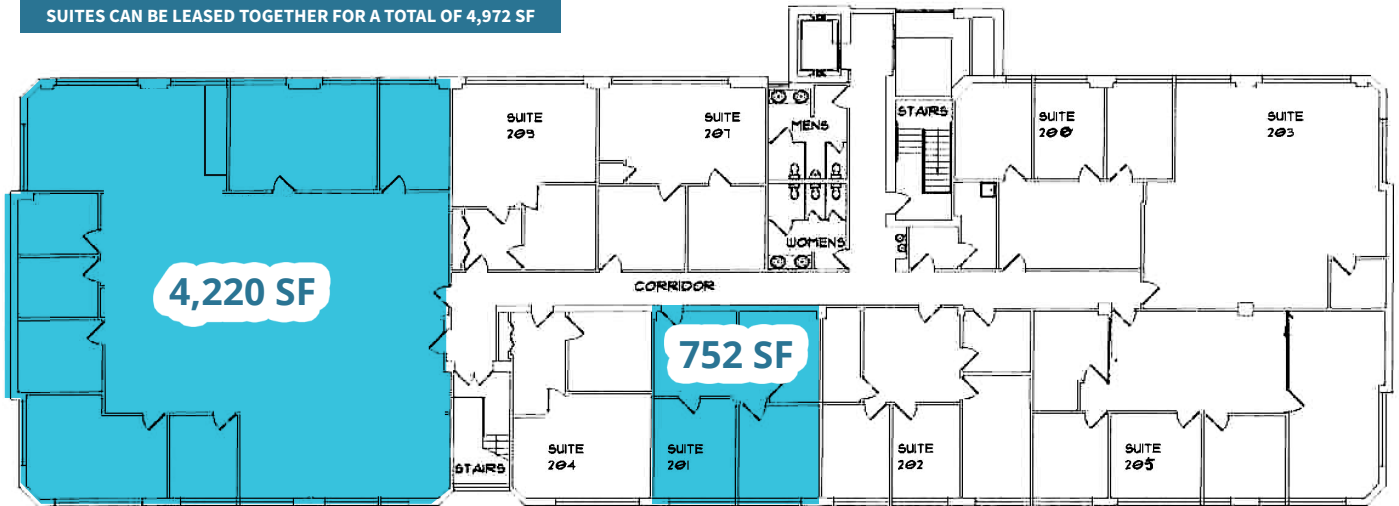
Contact us with  
any questions!

# Gigliotti Plaza Available Space

**Paul Horan**  
Principal, Pittsburgh  
Office Agency  
412 515 8525

[paul.horan@colliers.com](mailto:paul.horan@colliers.com)

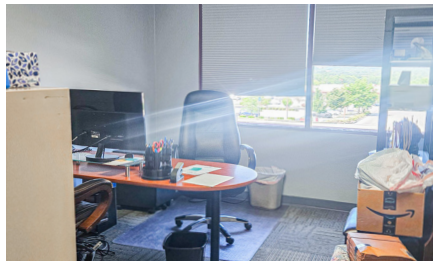
SUITES CAN BE LEASED TOGETHER FOR A TOTAL OF 4,972 SF



## 752 SF available on the 2<sup>nd</sup> floor.

Suite #201 offers three partitioned rooms.

Enjoy sizable private offices and a conference room amply lit by expansive windows, modern finishes, carpeted flooring, and drop ceilings with recessed lighting.

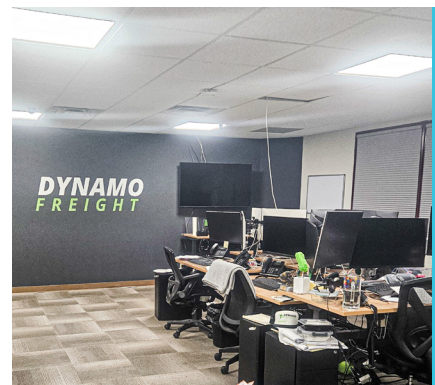


IDEAL FOR LAW & FINANCE USERS.

## 4,220 SF available on the 2<sup>nd</sup> floor.

Suite #206 is primarily an open layout with three private office spaces.

This corner suite offers ample open office space currently configured to accommodate 20 workstations, and also includes multiple partitioned offices. An open break area with kitchen cabinetry and appliances is in the suite's northeast corner.



IDEAL FOR TECH & ADMIN USERS.



525 William Penn Place, Suite #3510  
Pittsburgh, PA 15219

[www.colliers.com/pittsburgh](http://www.colliers.com/pittsburgh)  
[pittsburghmarketing@colliers.com](mailto:pittsburghmarketing@colliers.com)

Contact us with  
any questions!