

CENTRE MEDICAL PLAZA

855-865 Third Avenue | Chula Vista, CA



For leasing information contact:

LAEL CROMPTON, Senior Director, Leasing

310.293.2231 | LCrompton@pmbres.com | CA Lic. 01871298

PMBRES.COM

PROPERTY HIGHLIGHTS

- 855 Building: 49,132 SF, 4-story, class A medical office building
- Major tenants and referrals through Rady Children's, San Ysidro Health
- 865 Building: 28,204 SF, single story, medical office building
- Conveniently located between Interstate 5 & 805
- Close proximity to Scripps Mercy Chula Vista (1.5 miles) and Sharp Chula Vista Medical Center (3.5 miles)
- Ample parking within 4-Story covered garage



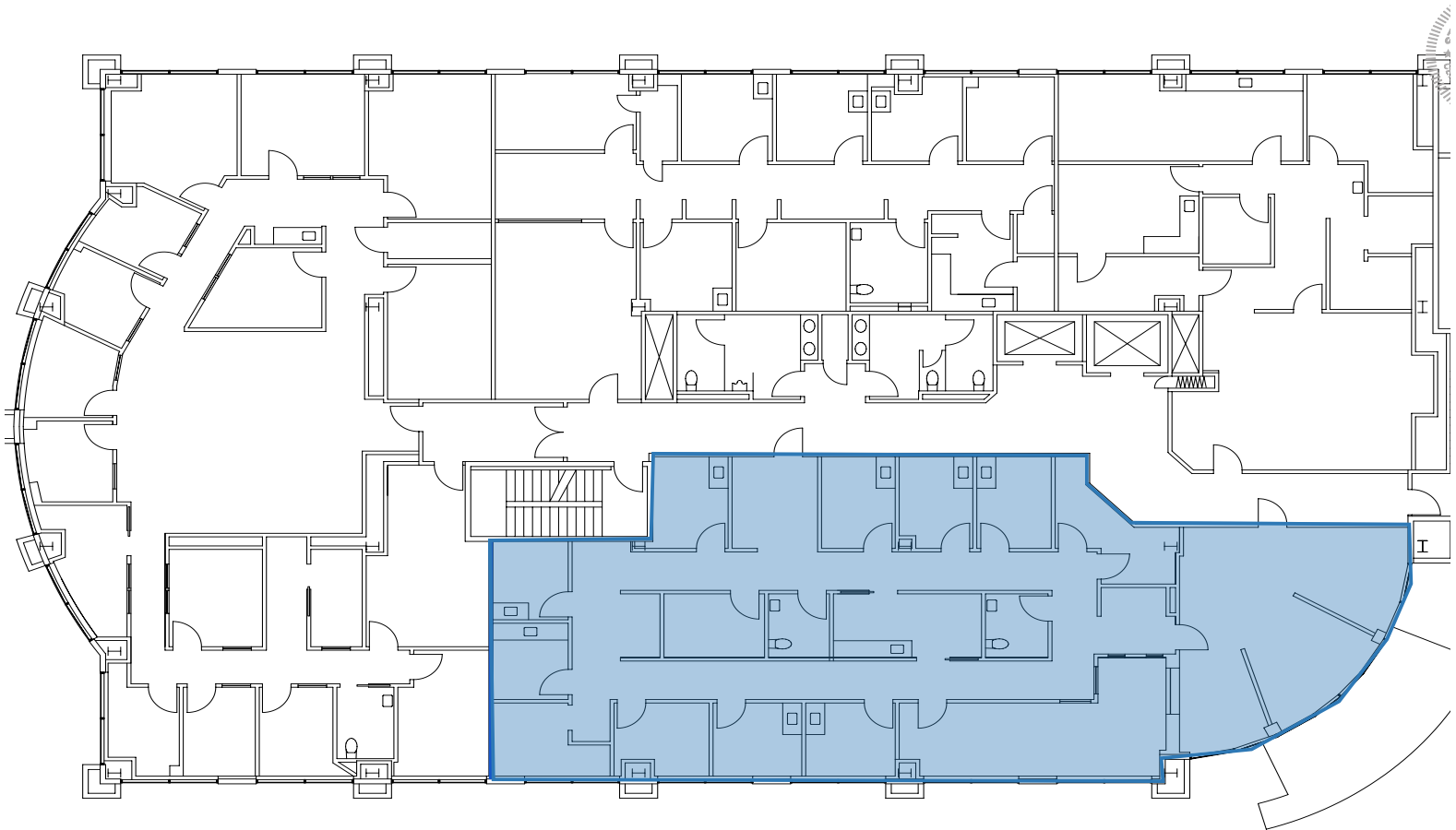
For leasing information contact:

LAEL CROMPTON, Senior Director, Leasing

310.293.2231 | LCrompton@pmbres.com | CA Lic. 01871298

AVAILABLE SPACE

855 THIRD AVE
SUITE 2200 | 3,642 RSF



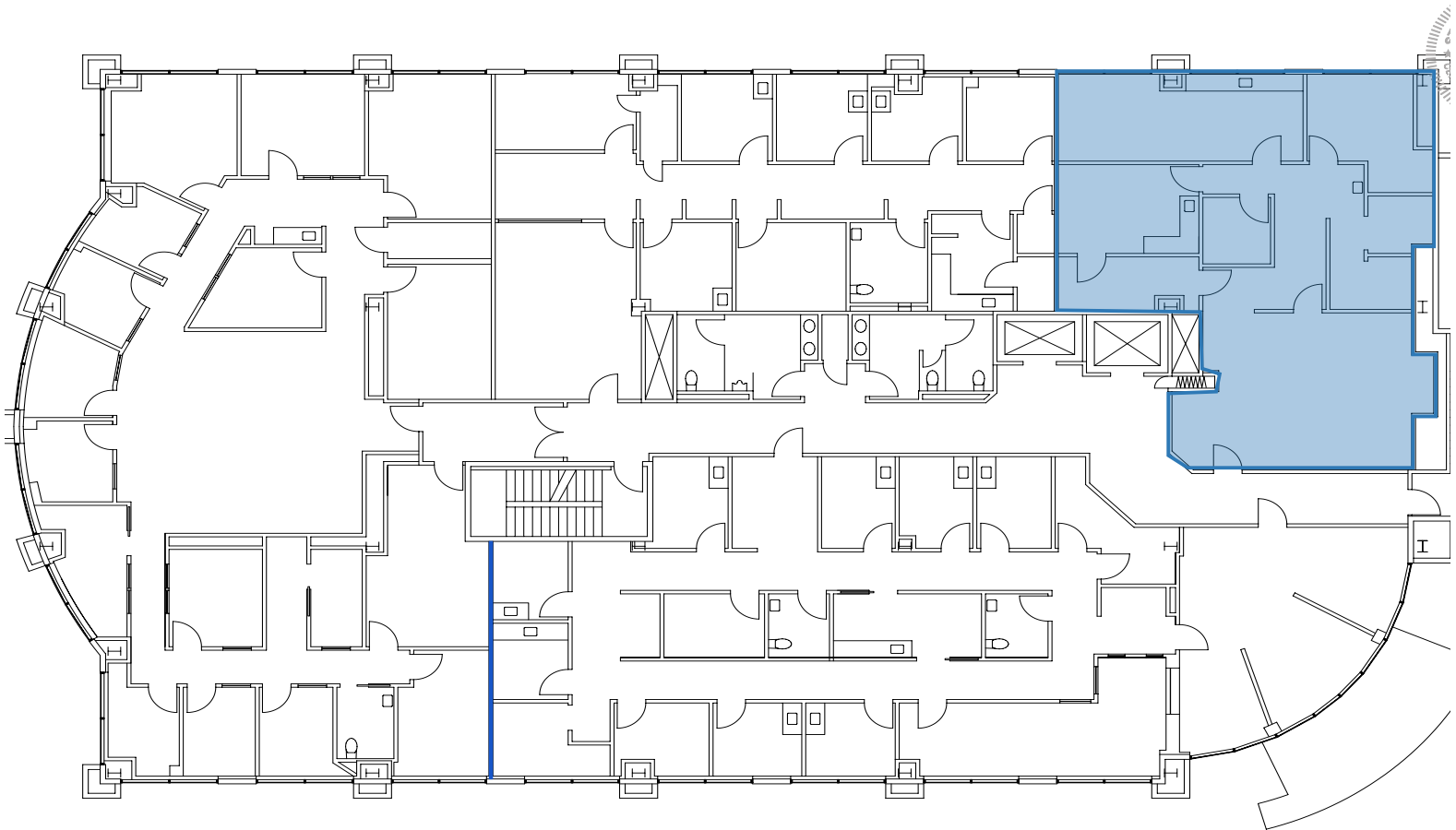
For leasing information contact:

LAEL CROMPTON, Senior Director, Leasing

310.293.2231 | LCrompton@pmbres.com | CA Lic. 01871298

AVAILABLE SPACE

855 THIRD AVE
SUITE 2250 | 1,932 RSF



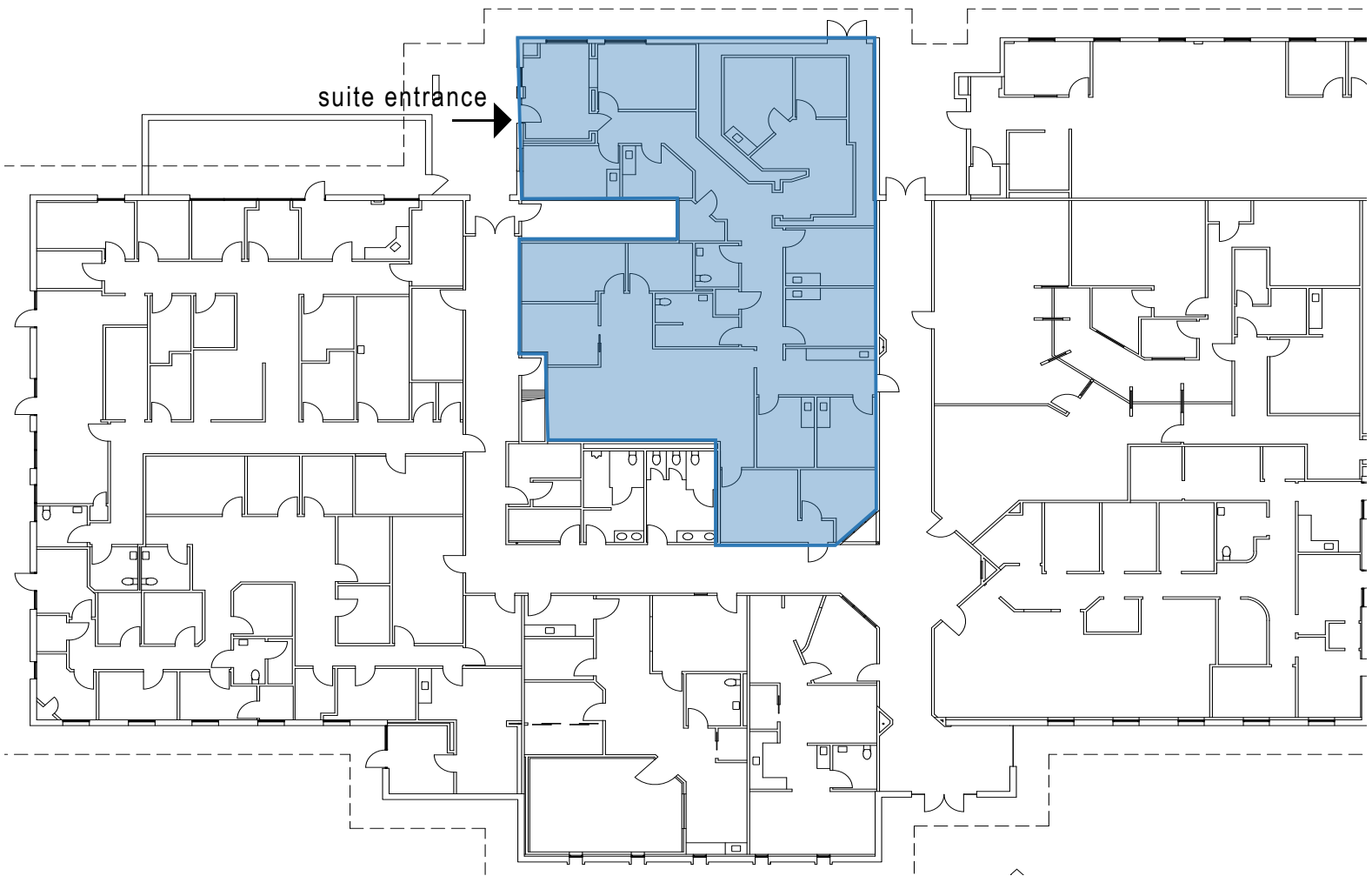
For leasing information contact:

LAEL CROMPTON, Senior Director, Leasing

310.293.2231 | LCrompton@pmbres.com | CA Lic. 01871298

AVAILABLE SPACE

865 THIRD AVE
SUITE 100 | 4,384 RSF



For leasing information contact:

LAEL CROMPTON, Senior Director, Leasing

310.293.2231 | LCrompton@pmbres.com | CA Lic. 01871298