

# CHINO INDUSTRIAL CENTER

15995 EUCLID AVE. | CHINO, CA

## BLDG. 7

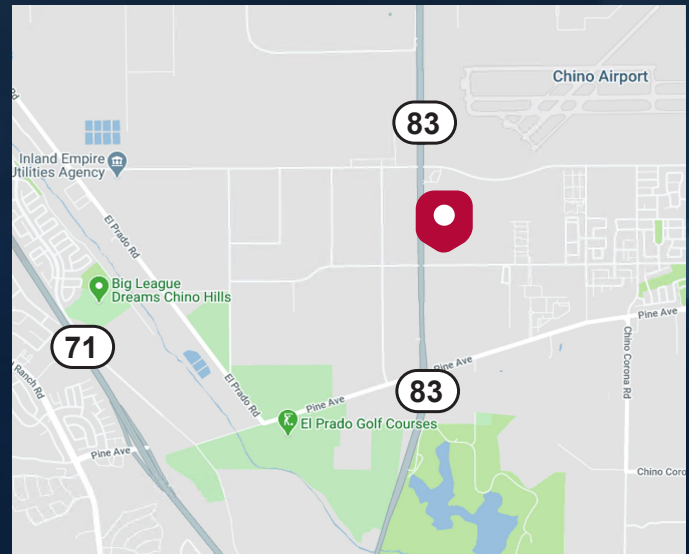
AVAILABLE FOR LEASE



## FOR LEASE ±21,293 SF

### PROPERTY HIGHLIGHTS

- 21,293 SF Concrete Tilt Up Industrial
- 1.17 Acres of Land
- 2,038 SF of Office Space
- ESFR Sprinkler System
- 26' Clearance
- 2 Dock High Doors
- 35,000lb Mechanical Load Levelers in place at every Loading Door
- 1 GL Doors
- 60'x50' Typical Bay Spacing
- 400A Service 277/480 Expandable to 800A
- Scrim Foil Ceiling
- 3% Skylights
- Existing LED Lighting in Warehouse
- 22 Car Parking Spots
- Access to 71, 60, 91, 15 and 57 Freeways



### FOR MORE INFORMATION, CONTACT:

**KEN ANDERSEN, CCIM, SIOR**  
EXECUTIVE VICE PRESIDENT  
O: 909.980.1234 | C: 949.350.3933  
KANDERSEN@DAUMCOMMERCIAL.COM  
CA DRE: #00902084

**ERIC FIKSE | SIOR**  
EXECUTIVE VICE PRESIDENT  
P: 909.652.9056 | F: 909.652.9076  
ERIC.FIKSE@DAUMCOMMERCIAL.COM  
CA DRE #01457380

**GABE DUPLANTIER**  
ASSOCIATE  
O: 909.912.0008 | C: 714.421.9275  
GDUPLANTIER@DAUMCOMMERCIAL.COM  
CA DRE: #02178517

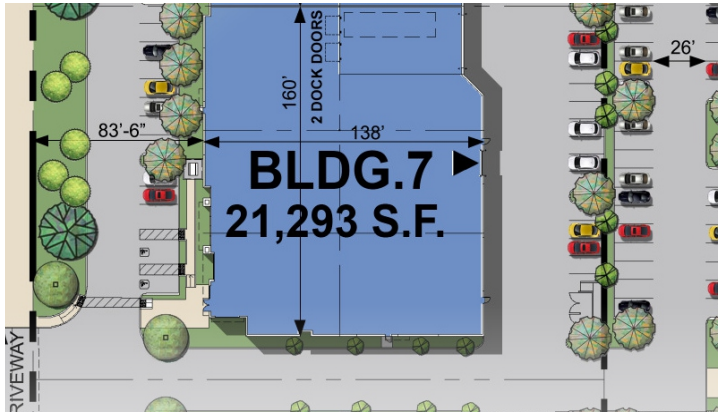
**COLE FIKSE**  
ASSOCIATE  
P: 909.912.0020 | C: 951.808.2491  
CFIKSE@DAUMCOMMERCIAL.COM  
CA DRE #02226649

# CHINO INDUSTRIAL CENTER

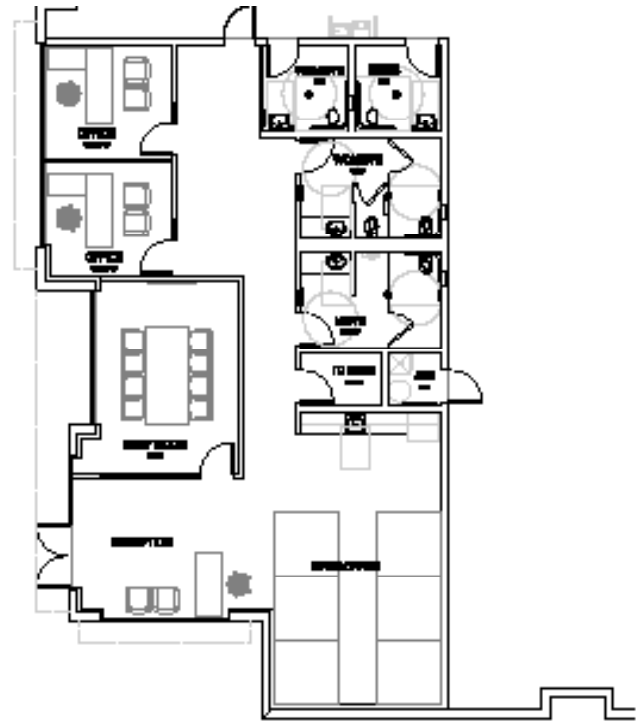
10621 EUCLID AVE. & 15995 EUCLID AVE. | CHINO, CA

## BLDG. 7

AVAILABLE FOR LEASE



BUILDING 7



FLOOR PLAN | BLDG 7

### FOR MORE INFORMATION, CONTACT:

**KEN ANDERSEN, CCIM, SIOR**  
EXECUTIVE VICE PRESIDENT  
O: 909.980.1234 | C: 949.350.3933  
KANDERSEN@DAUMCOMMERCIAL.COM  
CA DRE: #00902084

**ERIC FIKSE | SIOR**  
EXECUTIVE VICE PRESIDENT  
P: 909.652.9056 | F: 909.652.9076  
ERIC.FIKSE@DAUMCOMMERCIAL.COM  
CA DRE #01457380

**GABE DUPLANTIER**  
ASSOCIATE  
O: 909.912.0008 | C: 714.421.9275  
GDUPLANTIER@DAUMCOMMERCIAL.COM  
CA DRE: #02178517

**COLE FIKSE**  
ASSOCIATE  
P: 909.912.0020 | C: 951.808.2491  
CFIKSE@DAUMCOMMERCIAL.COM  
CA DRE #02226649

D/AQ Corp. #01129558. Maps Courtesy @Google & @Microsoft. Although all information is furnished regarding for sale, rental or financing is from sources deemed reliable, such information has not been verified and no express representation is made nor is any to be implied as to the accuracy thereof, and it is submitted subject to errors, omissions, changes of price, rental or other conditions, prior sale, lease or financing, or withdrawal without notice.

**ALERE**  
PROPERTY GROUP LLC

**DAUM**  
COMMERCIAL REAL ESTATE SERVICES