



Property Highlights

AVAILABILITY

- 1,541 SF 2nd Gen Dentist Office
- Fully improved

VIEW **360°** SPACE



FEATURES

- Visibility from I-805
- Building Signage
- Monument Signage

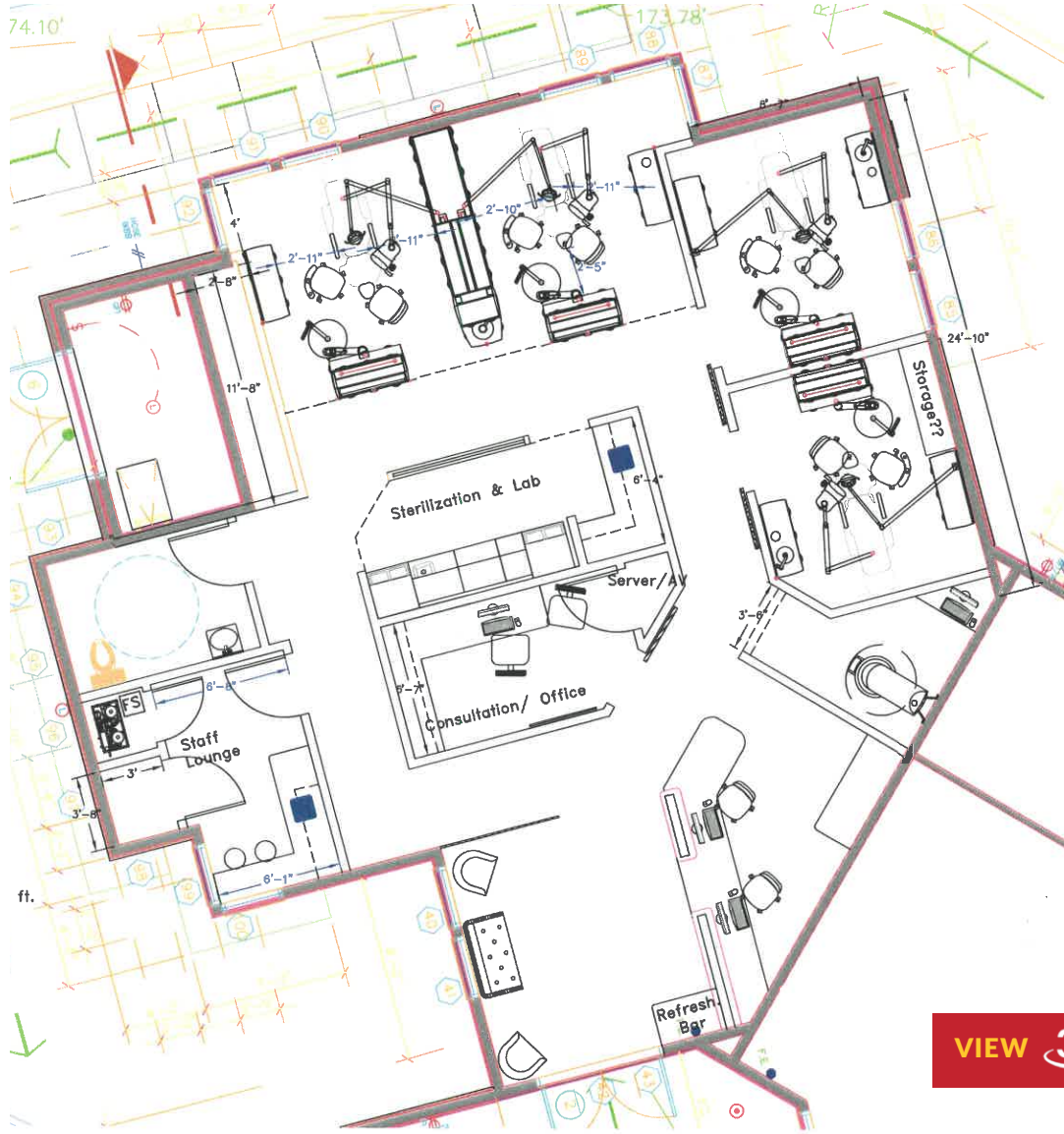
This information is deemed reliable, but not guaranteed. All information should be independently verified for its accuracy and completeness before relying upon it.



Contact Information

Kevan McDougal
kevanm@enduringrealestate.com
619-884-8391
Lic #01994492

Joe Wojdowski
joew@enduringrealestate.com
858-536-8383 x102
Lic #01237995



PROPERTY PHOTOS





ENDURING REAL ESTATE

REGIONAL AERIAL

9200 Scranton Rd, San Diego, CA 92121



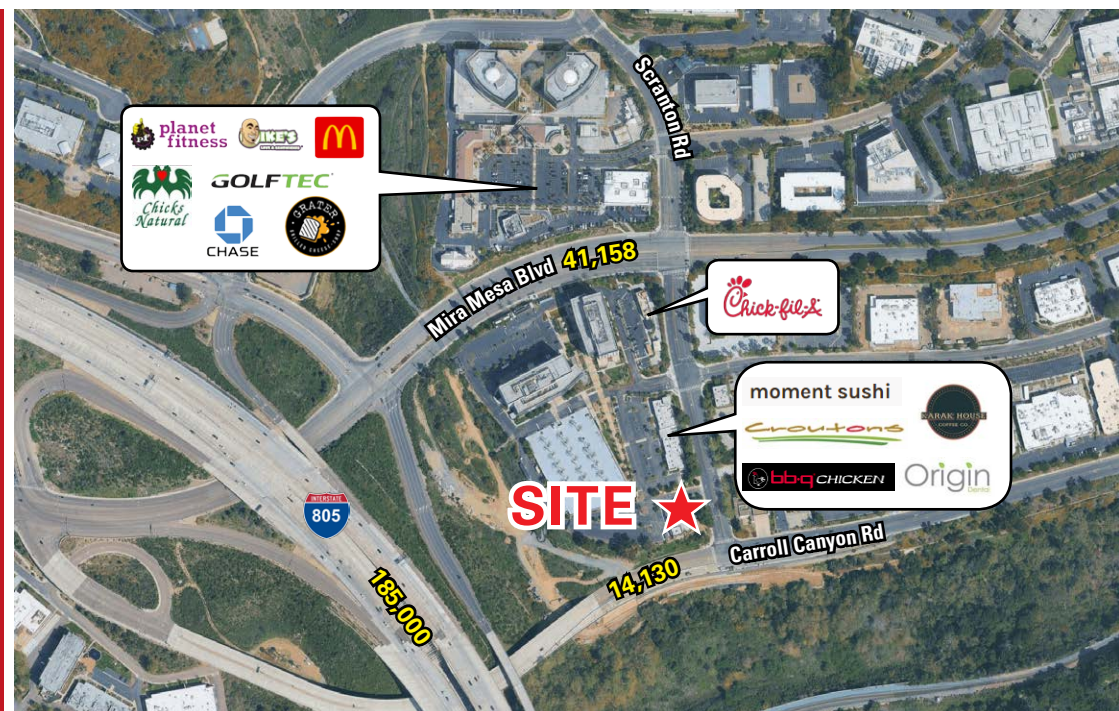
BROKER CONTACT INFORMATION

Kevan McDougal

619-884-8391
kevanm@enduringrealestate.com
Lic #01994492

Joe Wojdowski

858-536-8383 x102
joew@enduringrealestate.com
Lic #01237995



ENDURING REAL ESTATE

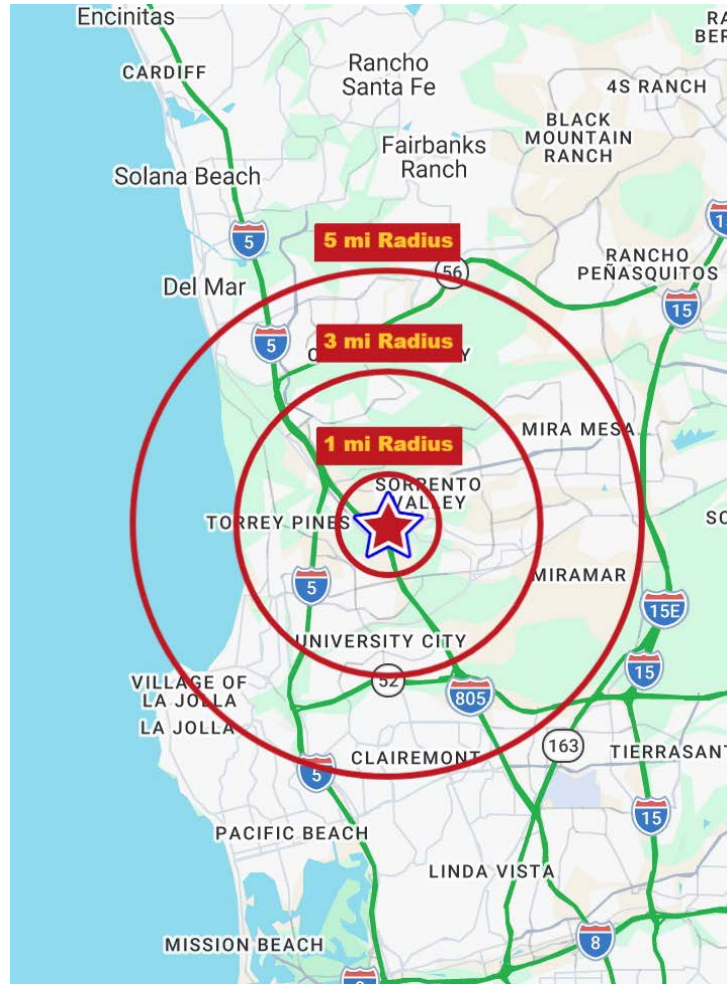
3990 Old Town Ave, Suite B-208
San Diego, CA 92110

DEMOGRAPHICS



9200 SCRANTON RD
SAN DIEGO, CA 92121

POPULATION	1 Mile	3 Miles	5 Mile
2025 Estimated Population	2,275	91,318	238,838
2030 Projected Population	2,186	88,701	232,087
2020 Census Population	2,217	95,205	241,555
2010 Census Population	2,208	85,932	224,266
Projected Annual Growth 2025 to 2030	-0.8%	-0.6%	-0.6%
Historical Annual Growth 2010 to 2025	0.2%	0.4%	0.4%
2025 Median Age	29.6	34.2	37.4
HOUSEHOLDS	1 Mile	3 Mile	5 Mile
2025 Estimated Households	966	33,914	86,196
2030 Projected Households	933	32,812	84,082
2020 Census Households	994	34,919	86,113
2010 Census Households	956	32,479	81,490
Projected Annual Growth 2025 to 2030	-0.7%	-0.6%	-0.5%
Historical Annual Growth 2010 to 2025	-	0.3%	0.4%
RACE AND ETHNICITY	1 Mile	3 Mile	5 Mile
2025 Estimated White	45.8%	47.9%	48.5%
2025 Estimated Black or African American	2.8%	3.0%	3.1%
2025 Estimated Asian & Pacific Islander	33.9%	34.2%	30.7%
2025 Estimated American Indian & Native Alaskan	0.6%	0.3%	0.5%
2025 Estimated Other Races	17.0%	14.6%	17.2%
2025 Estimated Hispanic	18.6%	16.3%	19.0%
INCOME	1 Mile	3 Mile	5 Mile
2025 Estimated Average Household Income	\$143,748	\$171,062	\$188,457
2025 Estimated Median Household Income	\$109,579	\$133,040	\$144,735
2025 Estimated Per Capita Income	\$61,049	\$64,684	\$69,318
EDUCATION (AGE 25+)	1 Mile	3 Mile	5 Mile
2025 Estimated Elementary (Grade Level 0 to 8)	0.2%	2.7%	3.9%
2025 Estimated Some High School (Grade Level 9 to 11)	2.2%	1.1%	2.6%
2025 Estimated High School Graduate	8.0%	7.4%	9.7%
2025 Estimated Some College	13.8%	10.3%	13.6%
2025 Estimated Associates Degree Only	6.2%	4.7%	6.5%
2025 Estimated Bachelors Degree Only	27.5%	35.3%	32.5%
2025 Estimated Graduate Degree	42.0%	38.4%	31.2%
BUSINESS	1 Mile	3 Mile	5 Mile
2025 Estimated Total Businesses	1,730	9,266	18,970
2025 Estimated Total Employees	30,660	129,311	210,013
2025 Estimated Employee Population per Business	17.7	14.0	11.1
2025 Estimated Residential Population per Business	1.3	9.9	12.6



Source:

Sites, USA, 2000 - 2020 Census, 2025 Estimates
& 2030 Projections Calculated using Proportional Block Groups