

Office Space For Lease

100 Meadowcreek Drive, Corte Madera



±749 Square Feet Available/Suite 225

We are pleased to offer the following:

Lease Terms:

- \$3.75 PSF/Month
- Full Service
- Annual 4% Increases
- No O.E. Pass-Throughs
- 2-5 Year Term

- ◆ Quiet Creek-Side Setting
- ◆ Dramatic Architecture, Extensive Glass
- ◆ Lunch Room (Common Area)
- ◆ Great So. Marin Location with Easy Access to Highway 101
- ◆ 15% Load
- ◆ Free On-Site Parking
- ◆ Walk to Corte Madera Village, Restaurants, Nugget Market
- ◆ Adjacent to Waterfront Bike & Jogging Paths

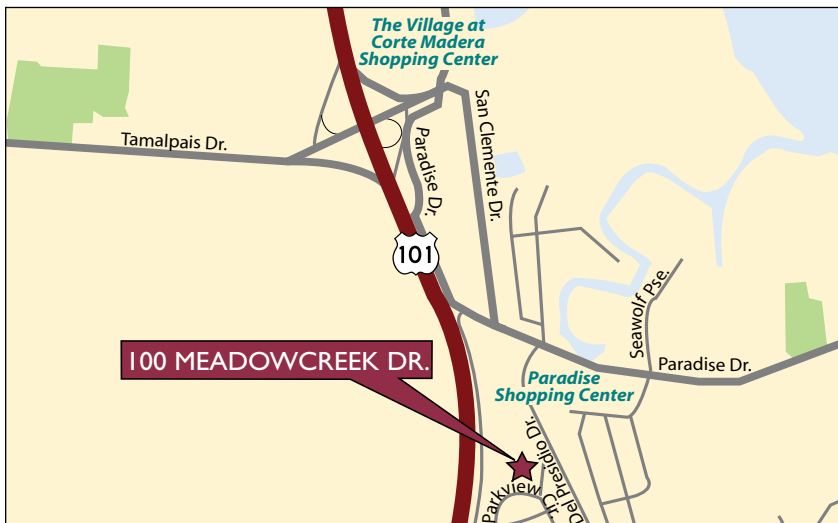
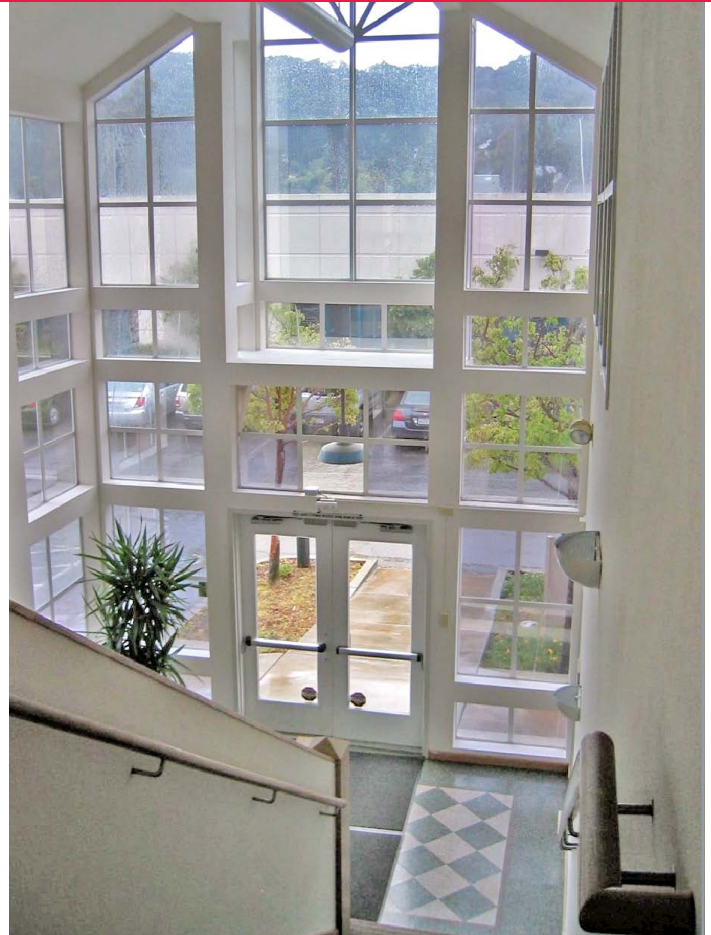
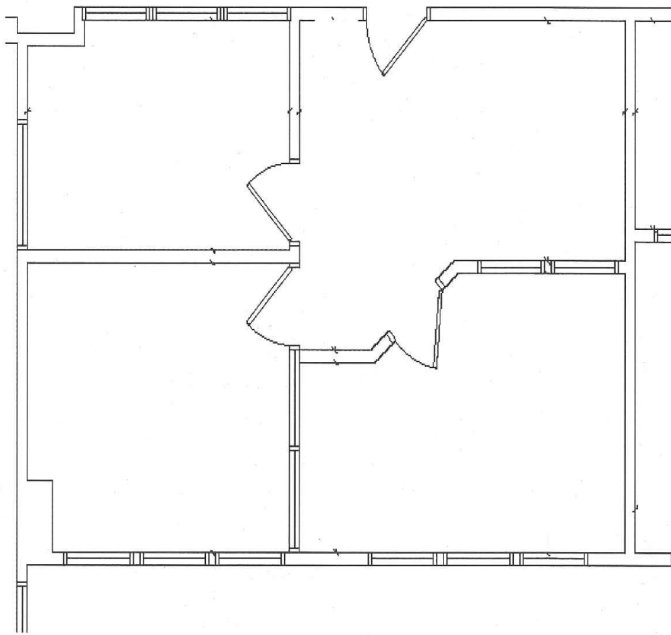
MERYL SEBESTYEN REAL ESTATE

CA Broker Lic #00554190
M 415.601.9215
meryl@msebestyenre.com

100 Meadowcreek Drive, Corte Madera

AVAILABLE 2ND FLOOR OFFICE SUITE:

Suite 225 ±749 RSF - Three private offices with open work area and reception. Plenty of natural light and operable windows!



MERYL SEBESTYEN REAL ESTATE

CA Broker Lic. #00554190

M 415.601.9215

meryl@msebestyenre.com