



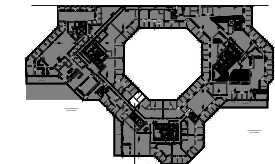
Continental Park
Continental Development Corporation
2041 Rosecrans Ave., Suite 200
El Segundo, CA 90245
t:310.640.1520
www.continentaldevelopment.com

ADDRESS

SUITE 4320
781 RSF

2121 ROSECRANS AVE.
EL SEGUNDO, CA 90245

KEY PLAN



AREA OF PREMISES

DATE: 4/1/2026
REVISION: 1
SCALE: 1/8"=1'-0"
RENTABLE: 781 RSF

DRAWING TITLE

FLOOR PLAN

