

PROPERTY SUMMARY



PROPERTY DESCRIPTION

Lovely office space completely remodeled in 2023 with all new contemporary finishes and mechanical systems. The building is perched high on a hill overlooking all of downtown, is one block from the Federal Courts and three blocks from the City Courts. Features five (5) private offices, reception area, breakroom and two ADA compliant restrooms. Light-filled with lots of windows.

PROPERTY HIGHLIGHTS

- First Generation Space: Everything is New!
- Short Walk to All Downtown Amenities
- One Block to Federal Courts; 3 Blocks to City Courts
- Short walk to all downtown amenities

OFFERING SUMMARY

Lease Rate:	\$14.00 SF/yr (MG)
Available SF:	1,475 SF
Lot Size:	0.12 Acres
Building Size:	4,236 SF

SPACES	LEASE RATE	SPACE SIZE
First Floor	\$14.00 SF/yr	1,475 SF

KRISTA VANNOY, CCIM, SIOR
Vice President & COO

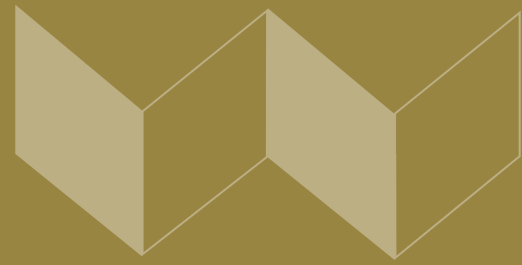
540.342.0881
kvannoy@waldvogelcommercial.com

MICHAEL WALDVOGEL, CCIM, SIOR
President & CEO

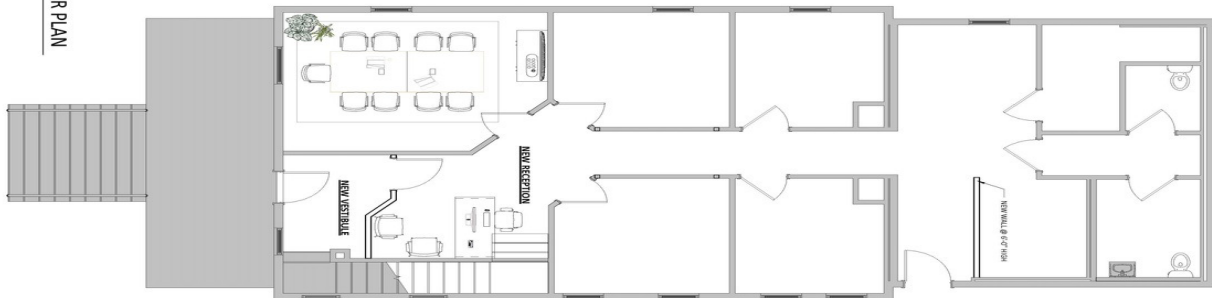
540.342.8599
mwaldvogel@waldvogelcommercial.com



ADDITIONAL PHOTOS



FIRST FLOOR PLAN
1/4" = 1'-0"

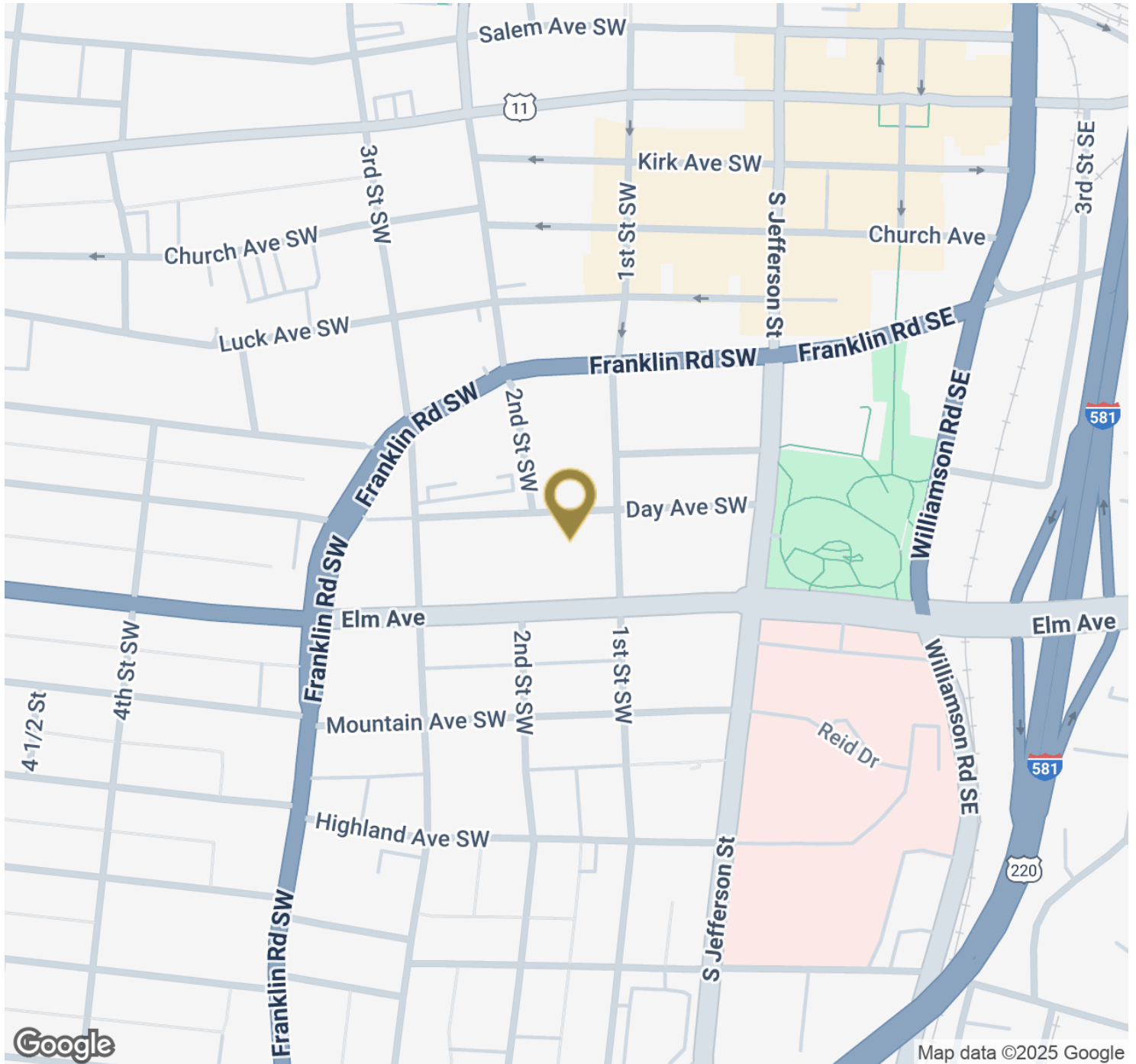
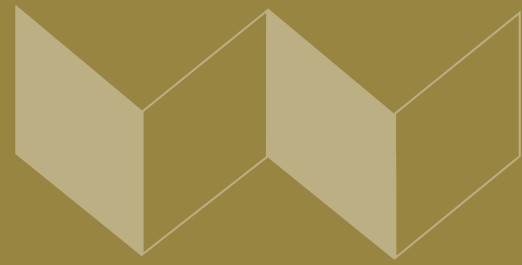


KRISTA VANNOY, CCIM, SIOR
Vice President & COO
540.342.0881
kvannoy@waldvogelcommercial.com

MICHAEL WALDVOGEL, CCIM, SIOR
President & CEO
540.342.8599
mwaldvogel@waldvogelcommercial.com



LOCATION MAP



KRISTA VANNOY, CCIM, SIOR
Vice President & COO
540.342.0881
kvannoy@waldvogelcommercial.com

MICHAEL WALDVOGEL, CCIM, SIOR
President & CEO
540.342.8599
mwaldvogel@waldvogelcommercial.com

