

FOR LEASE

6189 EL CAMINO REAL, SUITES 101 - 201, CARLSBAD CA



PROPERTY DETAILS

- Approximately 9,800 SF High Image Flex Space
- Approximately 6,000 SF of Warehouse with Dock Loading
- Minimum 22' Clear Height
- Gas Available
- 2 Separate Meters: Ground Floor: 800 Amps 277/480V, 3 Phase Power
Second Floor: 120/208v and 277\480v
- Parking: 3.26/1,000
- Located Directly Off El Camino Real with Close Proximity to Interstate 5
- Large Corporate Neighboring Firms
- Space Includes Reception, Conference Room, and Numerous Private Offices
- Extensive Glass Lines
- Pre-Wired Phone & Internet

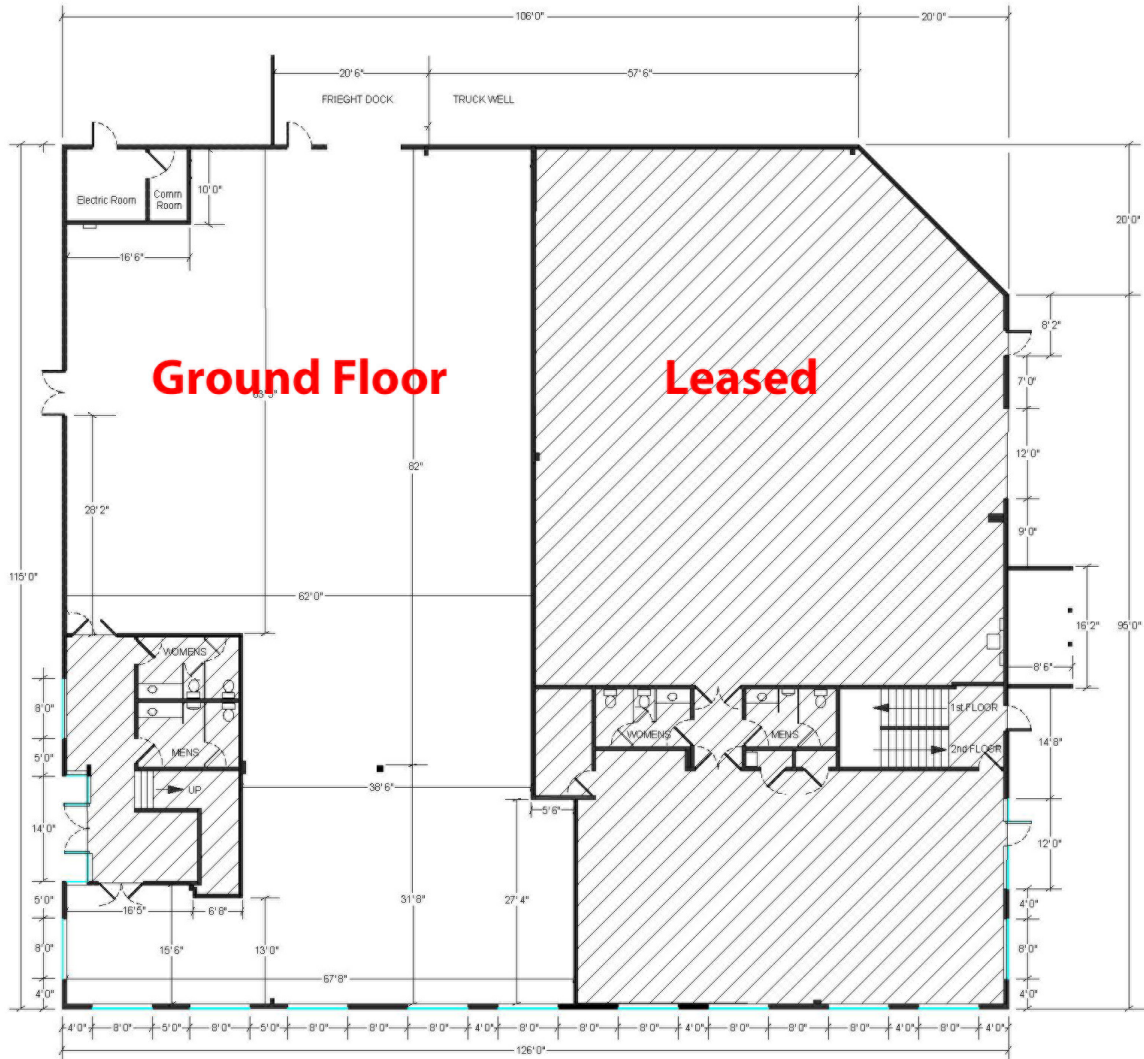
LEASE RATE - \$1.60 PSF/MONTH/GROSS

SAN DIEGO COMMERCIAL

TIM CLEPPER - PRESIDENT
380 S. MELROSE DR., SUITE 367, VISTA, CA 92081
TIM@SANDIEGOCOMMERCIAL.INFO WWW.SANDIEGOCOMMERCIAL.INFO
CA BROKER #: 01354303
C: 760.402.4846

FOR LEASE

6189 EL CAMINO REAL, SUITES 101 - 201, CARLSBAD CA
FLOOR PLAN



LEASE RATE - \$1.60 PSF/MONTH/GROSS

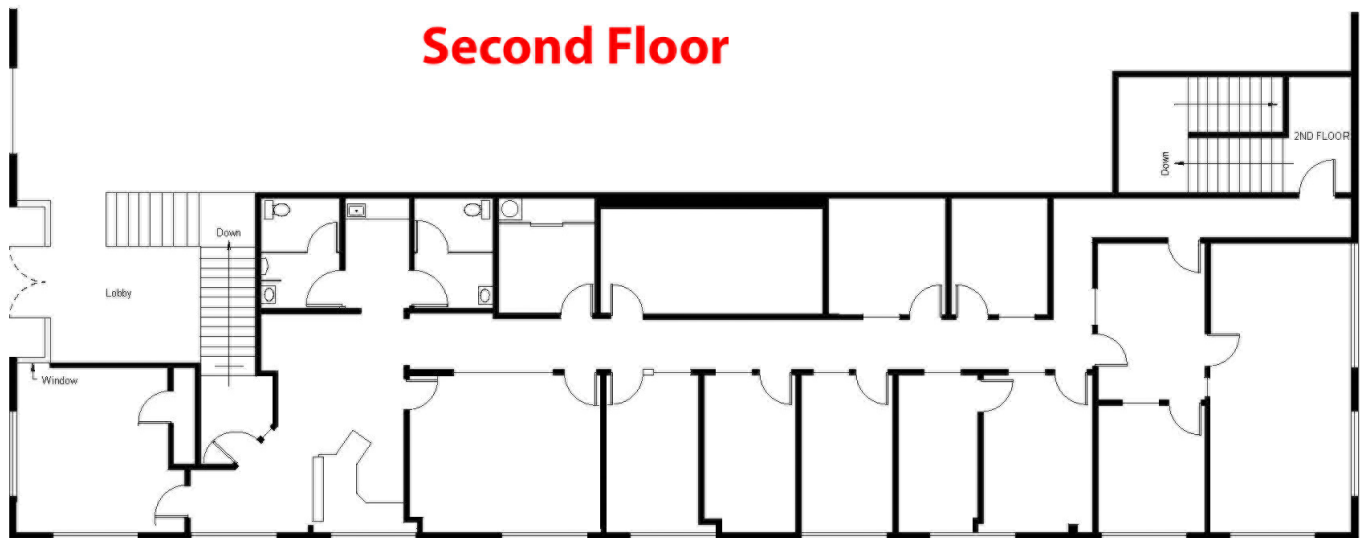
SAN DIEGO COMMERCIAL

TIM CLEPPER - PRESIDENT
380 S. MELROSE DR., SUITE 367, VISTA, CA 92081
TIM@SANDIEGOCOMMERCIAL.INFO WWW.SANDIEGOCOMMERCIAL.INFO
CA BROKER #: 01354303
C: 760.402.4846

FOR LEASE

6189 EL CAMINO REAL, SUITES 101 - 201, CARLSBAD CA

FLOOR PLAN



LEASE RATE - \$1.60 PSF/MONTH/GROSS

SAN DIEGO COMMERCIAL

TIM CLEPPER - PRESIDENT
380 S. MELROSE DR., SUITE 367, VISTA, CA 92081
TIM@SANDIEGOCOMMERCIAL.INFO WWW.SANDIEGOCOMMERCIAL.INFO
CA BROKER #: 01354303
C: 760.402.4846