

VUE Opening  
Spring 2026  
Now 90% Let



# NORTHERN GATEWAY LEISURE PARK

Colchester

## UNIT R6

United Way, Mile End,  
Colchester CO4 5UP



Colchester  
City Council

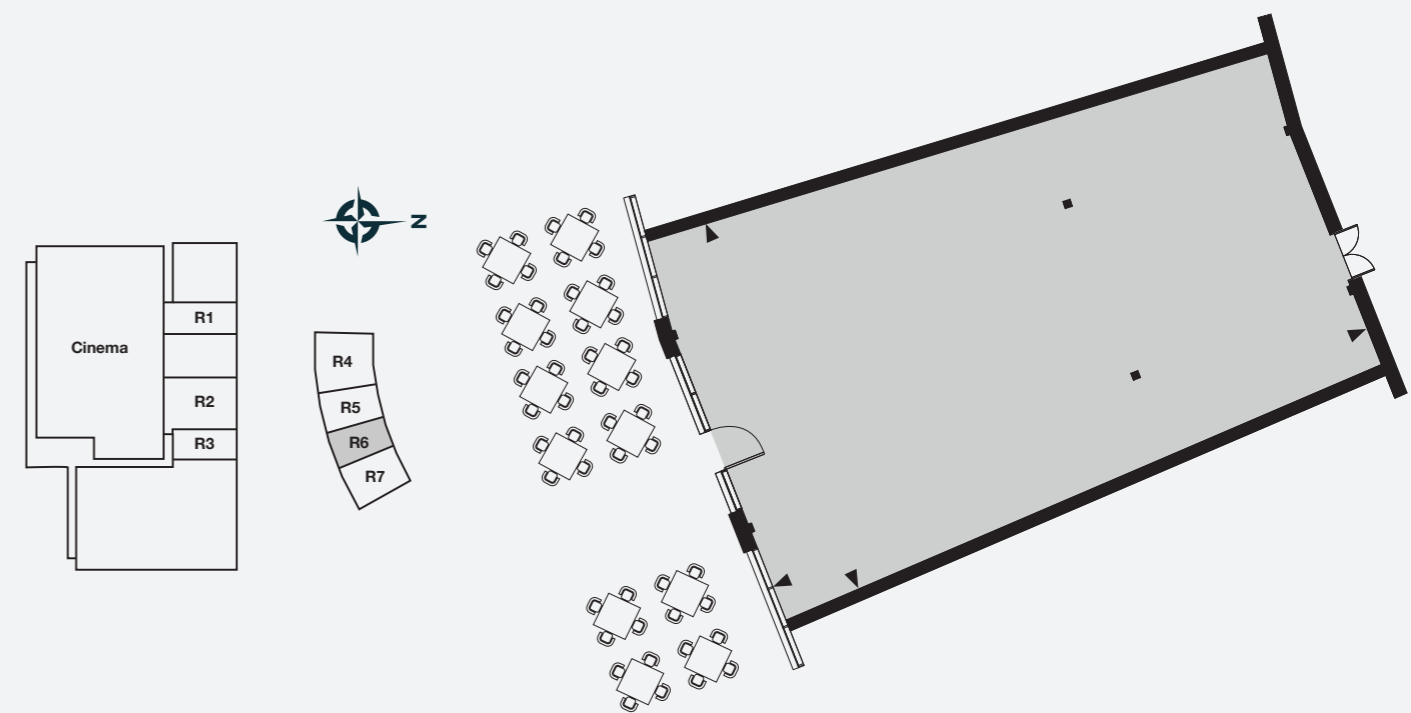


## Unit R6

This high quality contemporary urban design A3-A5 restaurant unit is located in a prime position opposite to the Vue Cinema entrance and facing the landscaped piazza with provision for substantial outdoor seating. Unit R6 is also close to Colchester United's stadium and a David Lloyd Club.

### Dimensions / Areas

Width	13.80m	45'3"
Depth	22.52m	73'10"
Floor Area	286sq m	3077sq ft



## Northern Gateway Leisure Park

Introducing a prestigious 10-acre scheme, part of Colchester City Council's major Northern Gateway sports and recreation facility. Located close to Colchester United's Stadium and a David Lloyd Club, this scheme has delivered 200,000 sq ft of new leisure space, complete with a high-quality landscaped piazza, 750 parking spaces, Fastned rapid charging EV points and impressive green credentials.

This development has secured an array of leisure and dining units throughout the site including a Travelodge Hotel, Vue Cinema, Hollywood Bowl, indoor golf Puttstars, as well as 7 new restaurants with the likes of Kervan Kitchen, Greggs and Wendy's drive-thru.



Colchester Population  
244,700 By 2031



Leisure Park extending  
to over 200,000sq ft



750 Public  
parking spaces



Glazed shopfront  
to restaurant unit



Extensive outdoor  
restaurant seating

# Site Location Map: CO4 5UP



## Wareing Partners

Nathan Wareing  
M: 07831 592152  
E: nathan@wareingpartners.com



## Whybrow

Ewan Dodds  
T: 01206 577667  
M: 07957 862773  
E: ewan.dodds@whybrow.net

