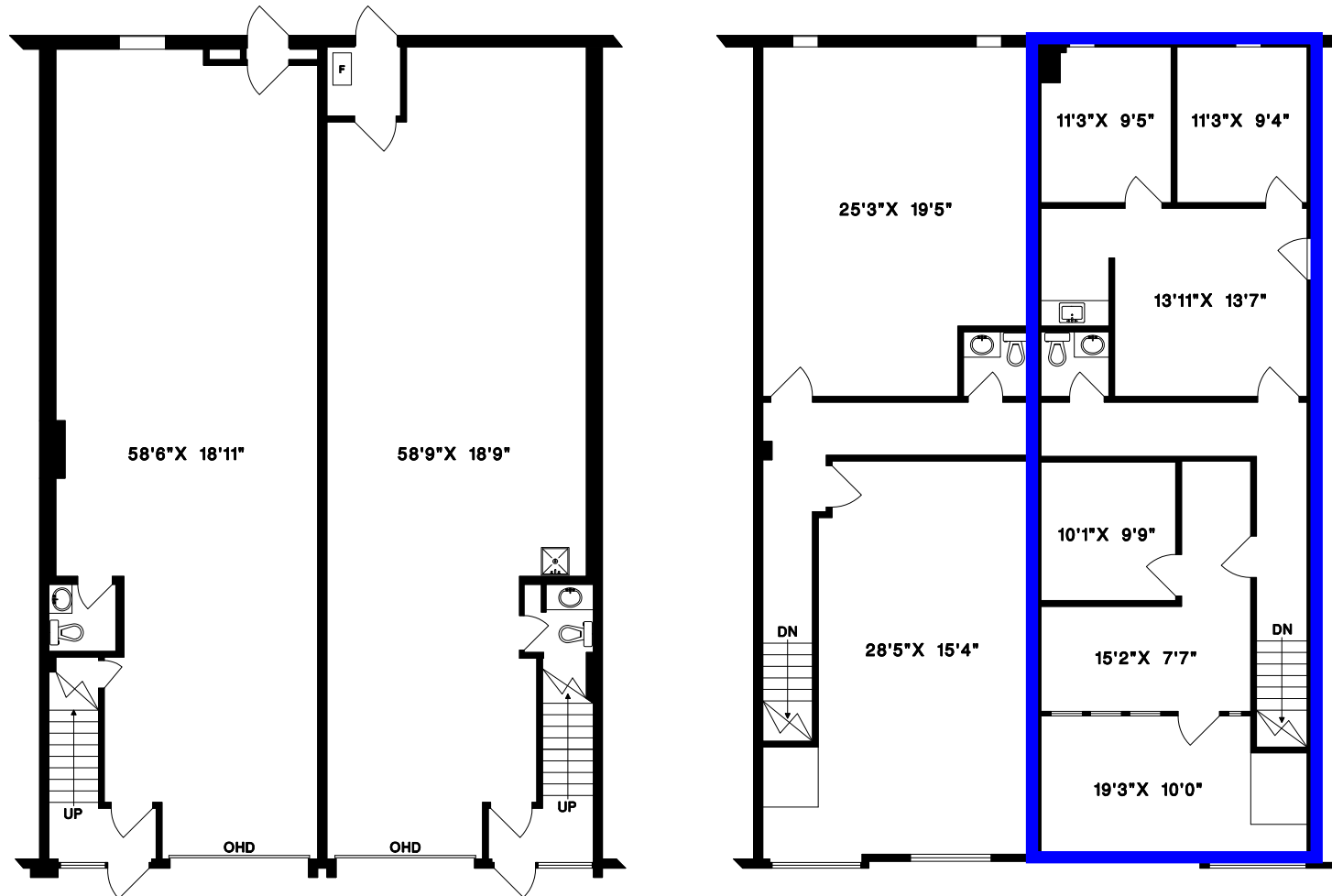


#17/18 -15531 24TH AVENUE,
SURREY, B.C.



AREA CERTIFICATION: JANUARY 28, 2021

As evidenced by our signature and in accordance with the
ANSI/BOMA Z65.2-2009 Industrial Buildings: Standard Methods of Measurement,
we hereby certify the Total Gross Leasable Area of these spaces to be 4,800 Square Feet.

CRAIG W. NICHOLS
MEASURE MASTERS



1' 6'
SCALE

DRAWN BY: CN
DATE: JANUARY 2021
REVISED:

MEASURE MASTERS
SURREY/WHITE ROCK
(604) 539-0285
surrey@measuremasters.ca