

MAYFAIR

64

NORTH ROW

# INCLUSIVELY MAYFAIR

64

64

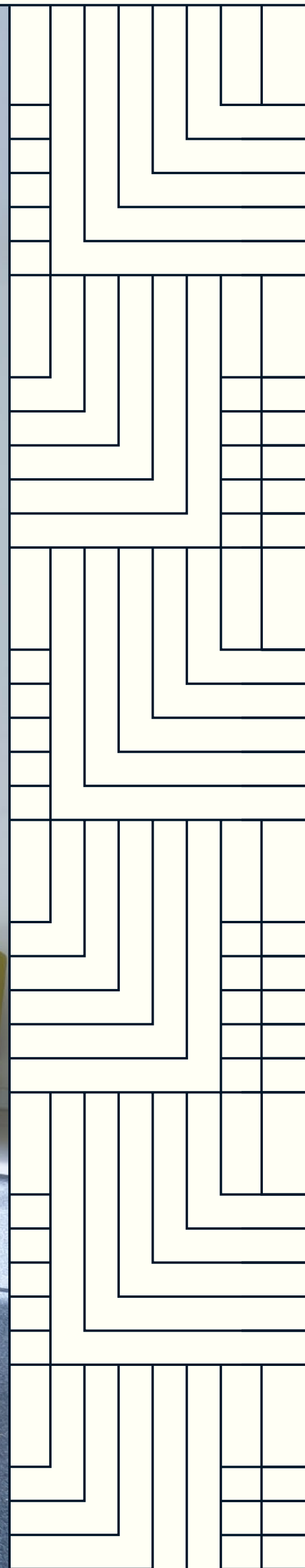


# FEEL THE DIFFERENCE

22,836 sq ft of fully fitted, plug-and-play office space with clean lines and a contemporary, modern design, available on a flexible managed or traditional lease.



Ground floor reception ►



## 64 North Row

- 6 Mayfair Executive Offices
- 5 Mayfair Executive Offices
- 4 Brecher LLP
- 3
- 2
- 1 Brecher LLP



Ground floor reception



# PERFECTLY POSITIONED

64 North Row sits on the border of two of London's most prestigious villages, Mayfair and Marylebone.

# AVAILABLE SPACE

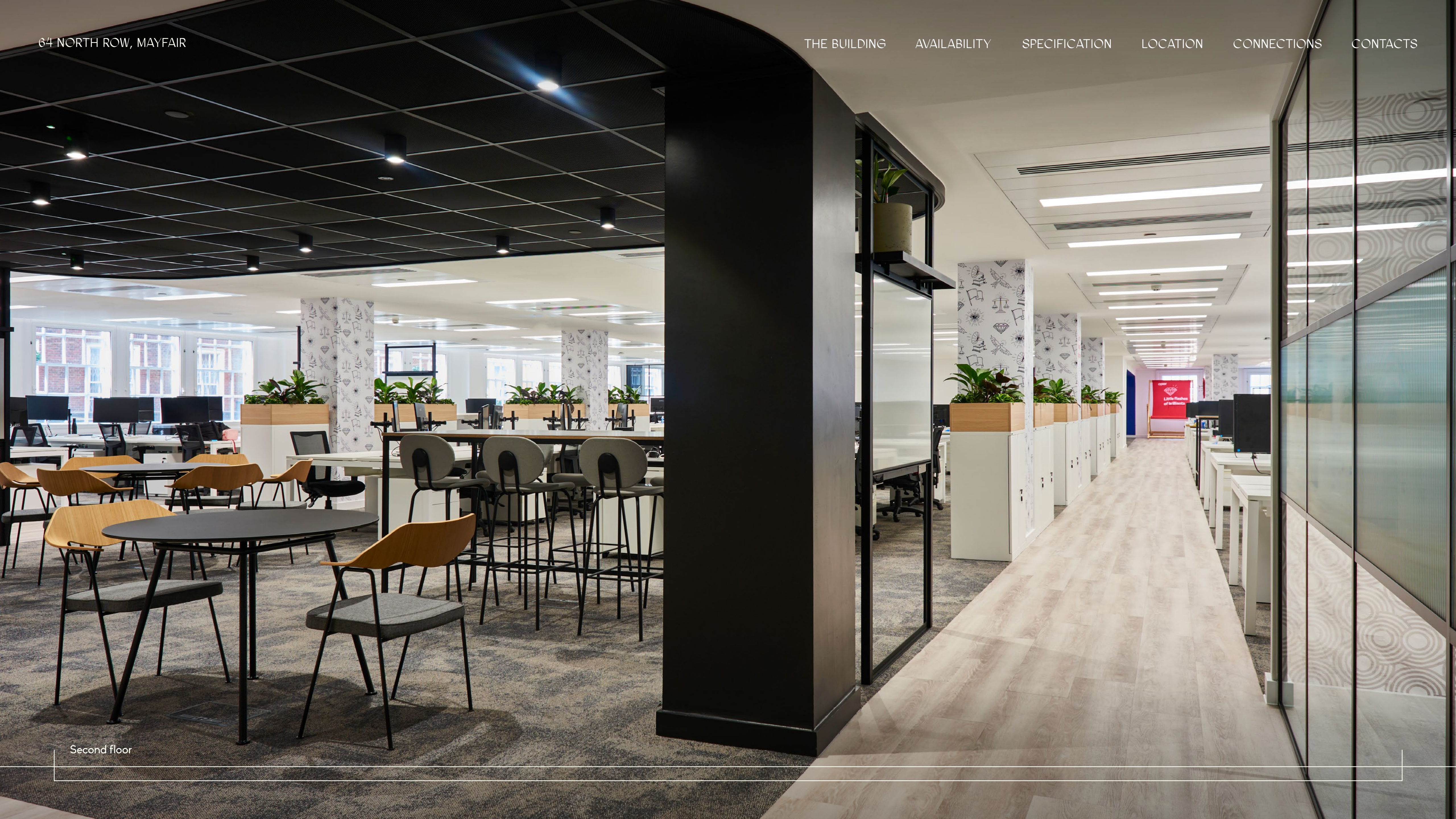
Third 11,381 SQ FT

Second 11,455 SQ FT

**TOTAL 22,836 SQ FT**

Second floor ▶





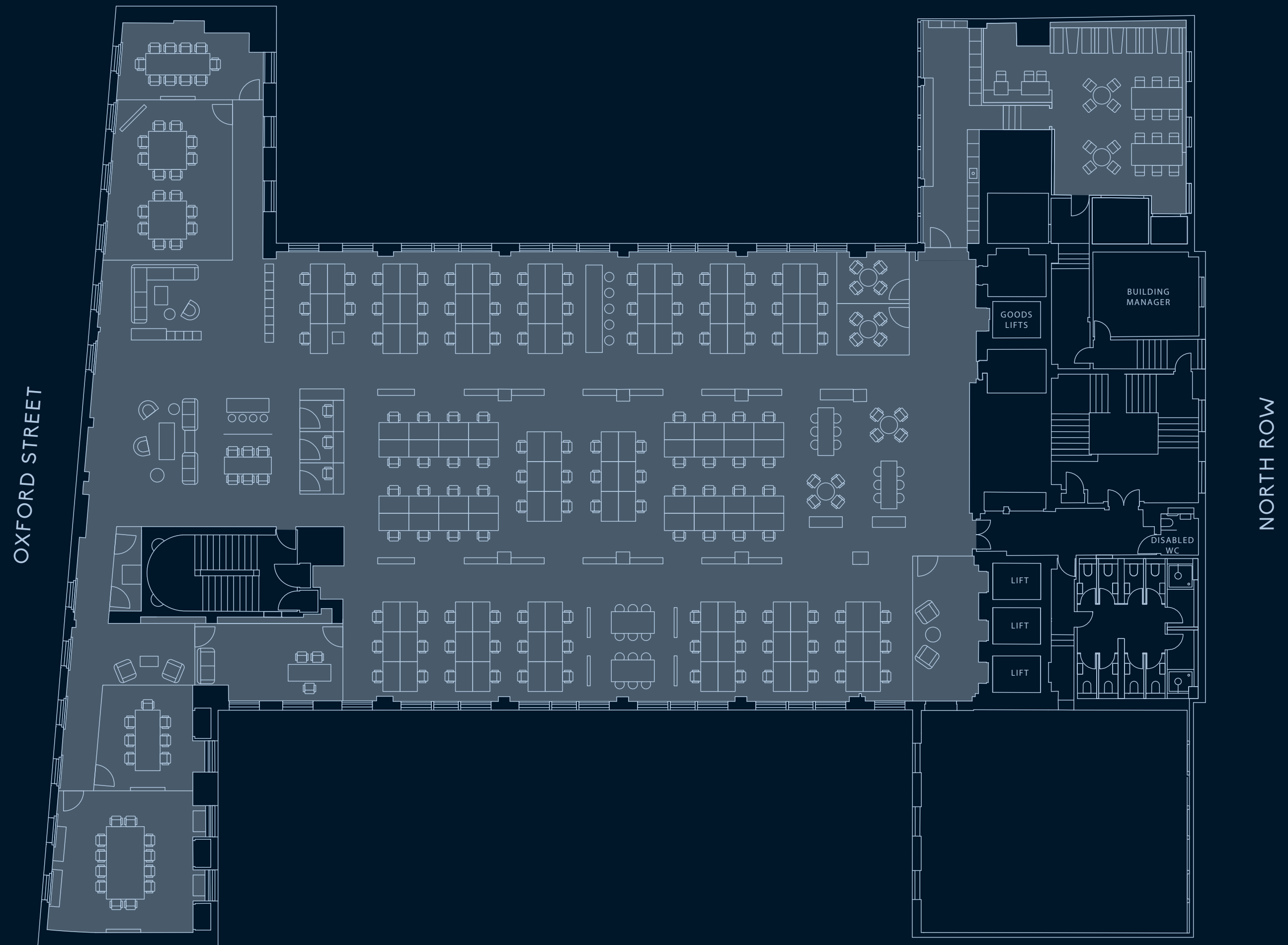
Second floor

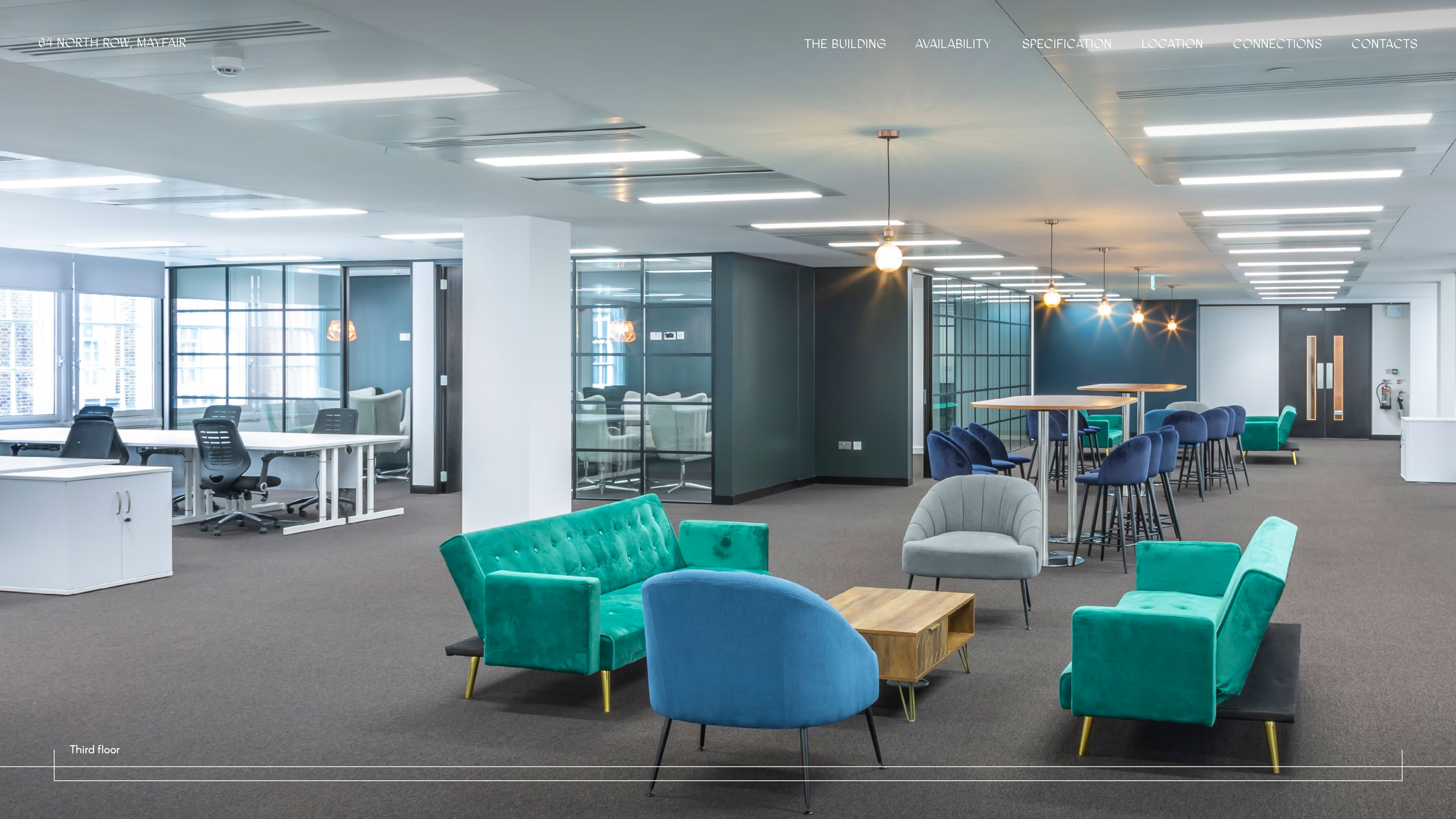
# SECOND FLOOR

11,455 SQ FT / 1,064 SQ M

122 DESKS

Second floor, break out area ▼



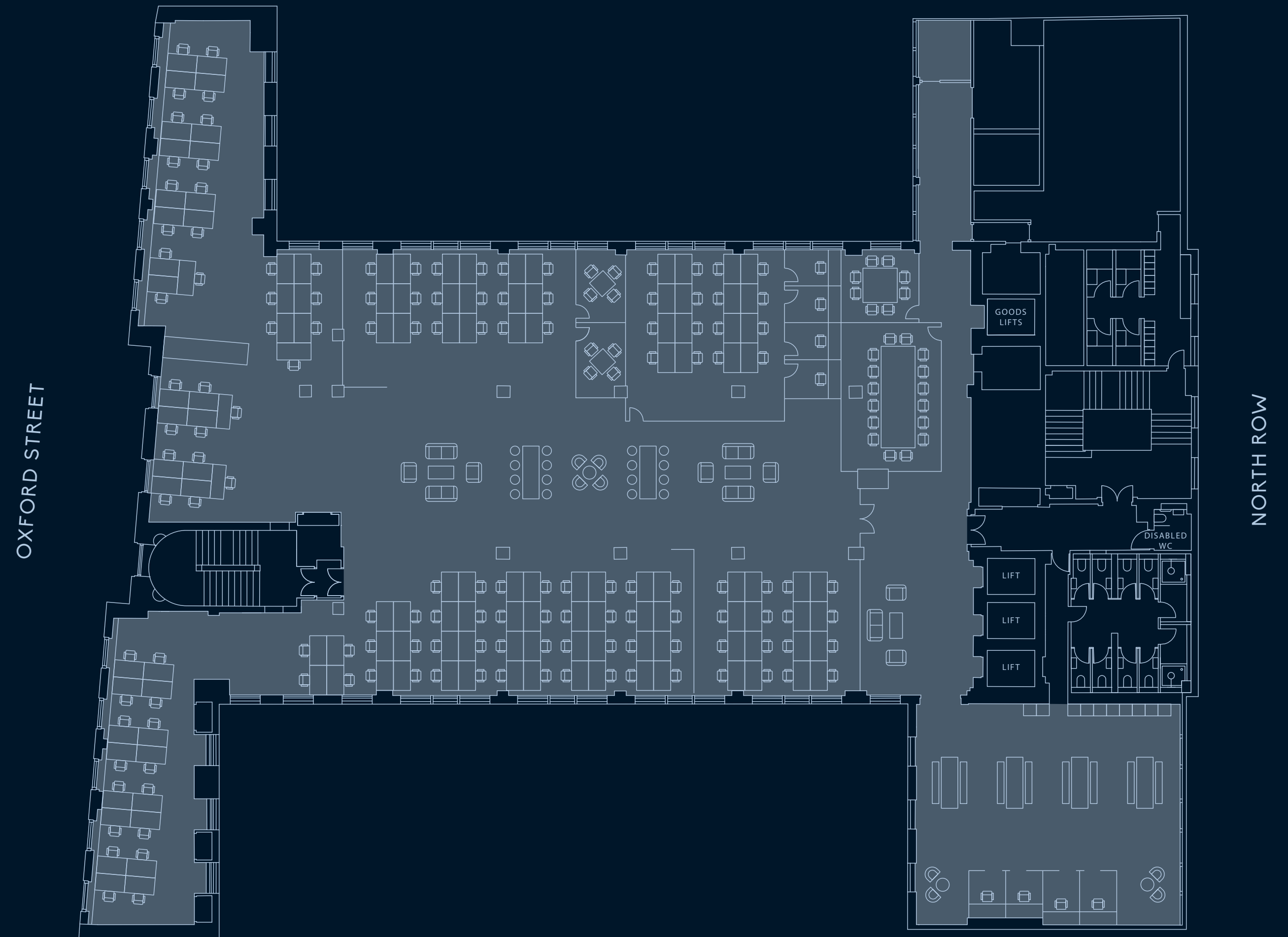


# THIRD FLOOR

11,381 SQ FT / 1,057 SQ M

140 DESKS

Third floor, meeting room ▼





Third floor, kitchen

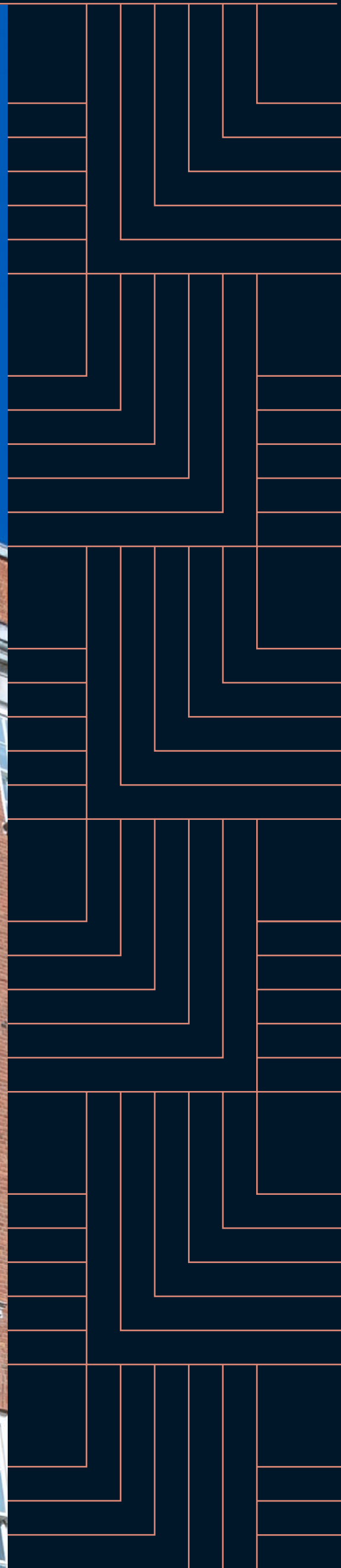
# SUMMARY SPECIFICATION

## FLOORS 2 & 3

- Fully fitted, plug & play office space
- 4 pipe fan coil air conditioning
- Plasterboard ceiling with inset LED lighting
- Full access metal tile raised floor (150 mm void)
- 8x superloos, 1x DDA WC and 2x showers

## SUMMARY BUILDING SPECIFICATION

- Remodelled and refurbished contemporary reception
- Fibre installed
- 3x 16 person refurbished passenger lifts
- 2x ground floor showers (accessed via North Row)
- Secure bike spaces (accessed via North Row)
- 1x goods lift
- Commissionaire & 24 hour security



# LOCAL AREA

Both Mayfair and Marylebone are home to some of the world's most luxurious fashion brands and retailers, as well as playing host to the best restaurants and hotels in the capital.

Mayfair is London's premier business district and has attracted many international, corporate, financial and professional occupiers including Lazard, Blackstone, KPMG, Centrica, Texas Pacific Group and Alfred Dunhill.



## RESTAURANTS

- 01 Scott's
- 02 Mount Street Deli
- 03 The George Club
- 04 The Grazing Goat
- 05 CUT
- 06 Roka
- 07 The Marylebone
- 08 The Parlour
- 09 Delamina
- 10 Chiltern Firehouse

## HOTELS

- 11 The Connaught
- 12 Claridge's
- 13 The Beaumont
- 14 Grosvenor House Hotel
- 15 The Dorchester
- 16 The Hyatt Regency

## RETAIL & LEISURE

- 17 Christian Louboutin
- 18 Brown Hart Gardens
- 19 Phillips
- 20 Virgin Active
- 21 Selfridges
- 22 The Wallace Collection

# LEAFY GREENS

Working at 64 North Row in Mayfair offers convenient access to several green spaces, such as Grosvenor Square and Berkeley Square, providing tranquil spots for relaxation during breaks.

Additionally, Hyde Park is nearby, offering expansive areas for leisurely walks or outdoor activities after work.

[Hyde Park ▶](#)

[Grosvenor Square ▼](#)



# A THRIVING LOCATION

Lunch in Hyde Park.  
Dinner in Mayfair.  
Cocktails in Marylebone.

64 North Row in Mayfair boasts a prime location in one of London's most prestigious districts, surrounded by luxury boutiques, fine dining and excellent transport links. The area offers a vibrant mix of business and leisure amenities.

Scott's Mayfair ▼



South Molton Street ▼



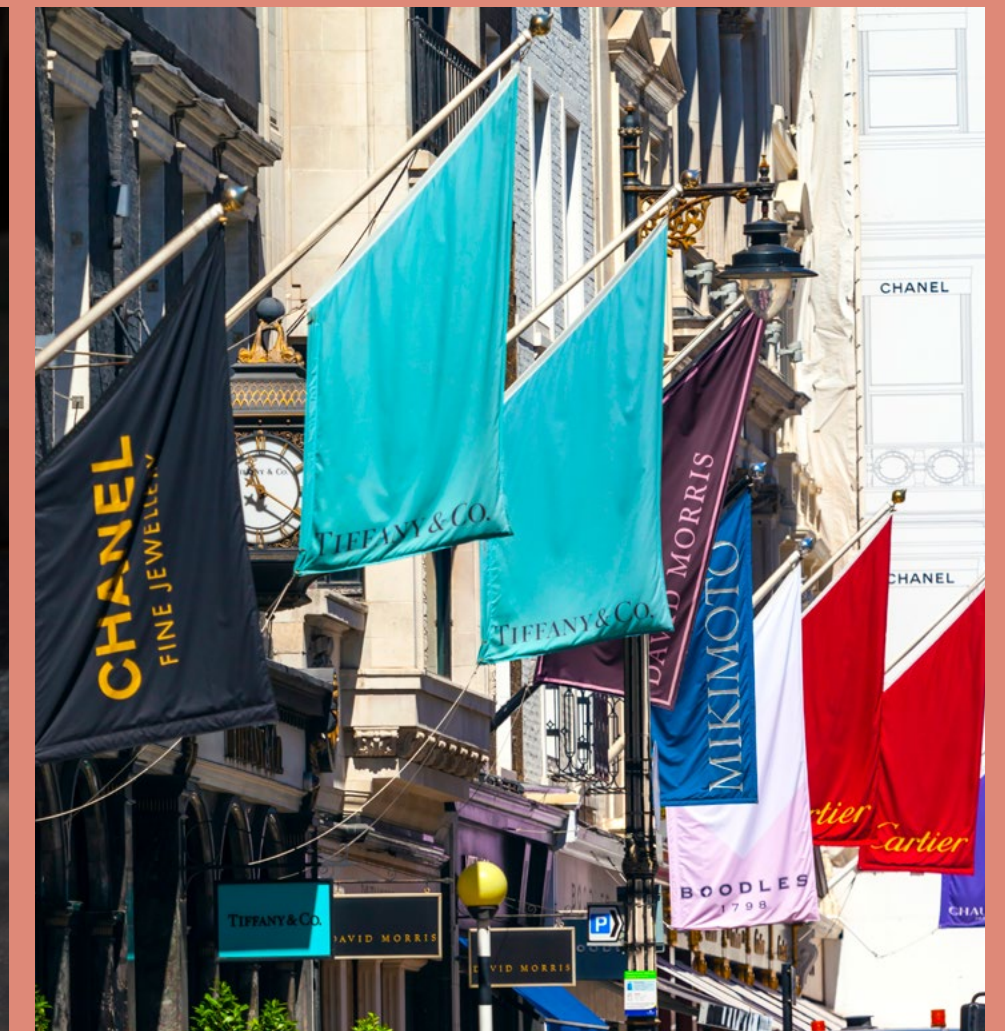
H.R. Higgins Coffee ▼



Selfridges ▼

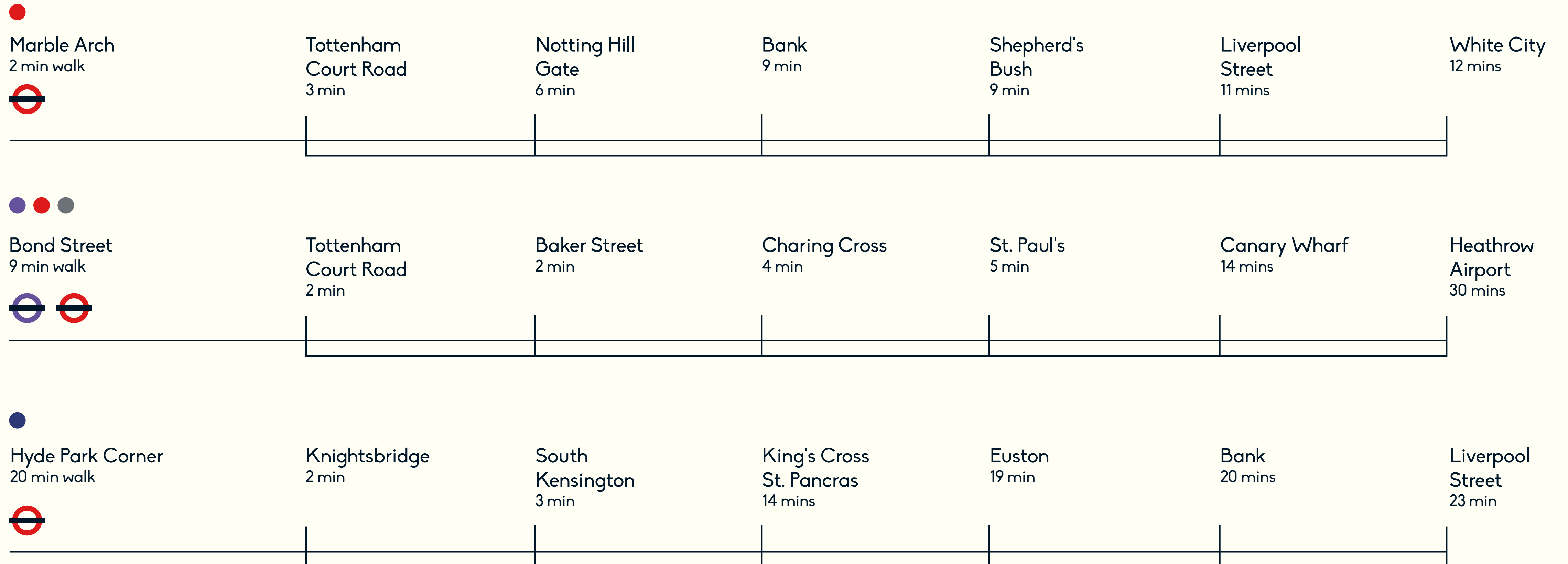


Bond Street ▼



# LONDON, LINKED

64 North Row boasts excellent accessibility. The Elizabeth Line is a short walk away, offering quick and seamless access across London.



## BLUEBOOK

### CHRIS WATKIN

07730 066 523  
chris@bluebooklondon.co.uk

### TOR CUMING

07714 089 823  
tor@bluebooklondon.co.uk

**64NORTHROW.COM**

Misrepresentation Act: The joint agents, for themselves and for the vendors or lessors of this property, whose agents they are, give notice that: These particulars are produced in good faith, but are set out as a general guide only, and do not constitute any part of a contract; No person in the employment of the joint agents has any authority to make or give any representation or warranty whatever in relation to this property; Unless otherwise stated all rents or prices quoted are exclusive of VAT which may be payable in addition. February 2025. 1014796.

Siren | +44 (0)20 7478 8300 | sirendesign.co.uk

## NEWMARK

### RHODRI PHILLIPS

07768 615 296  
rhodri.phillips@nmrk.com

### JAMES LUNN

07825 006 692  
james.lunn@nmrk.com

MAYFAIR

64

NORTH ROW