

# TWELFTH FLOOR

20 N ORANGE AVE, ORLANDO, FL 32801



## 12<sup>TH</sup> FLOOR AVAILABILITY

SPACES FROM 3,110 - 7,366 SF

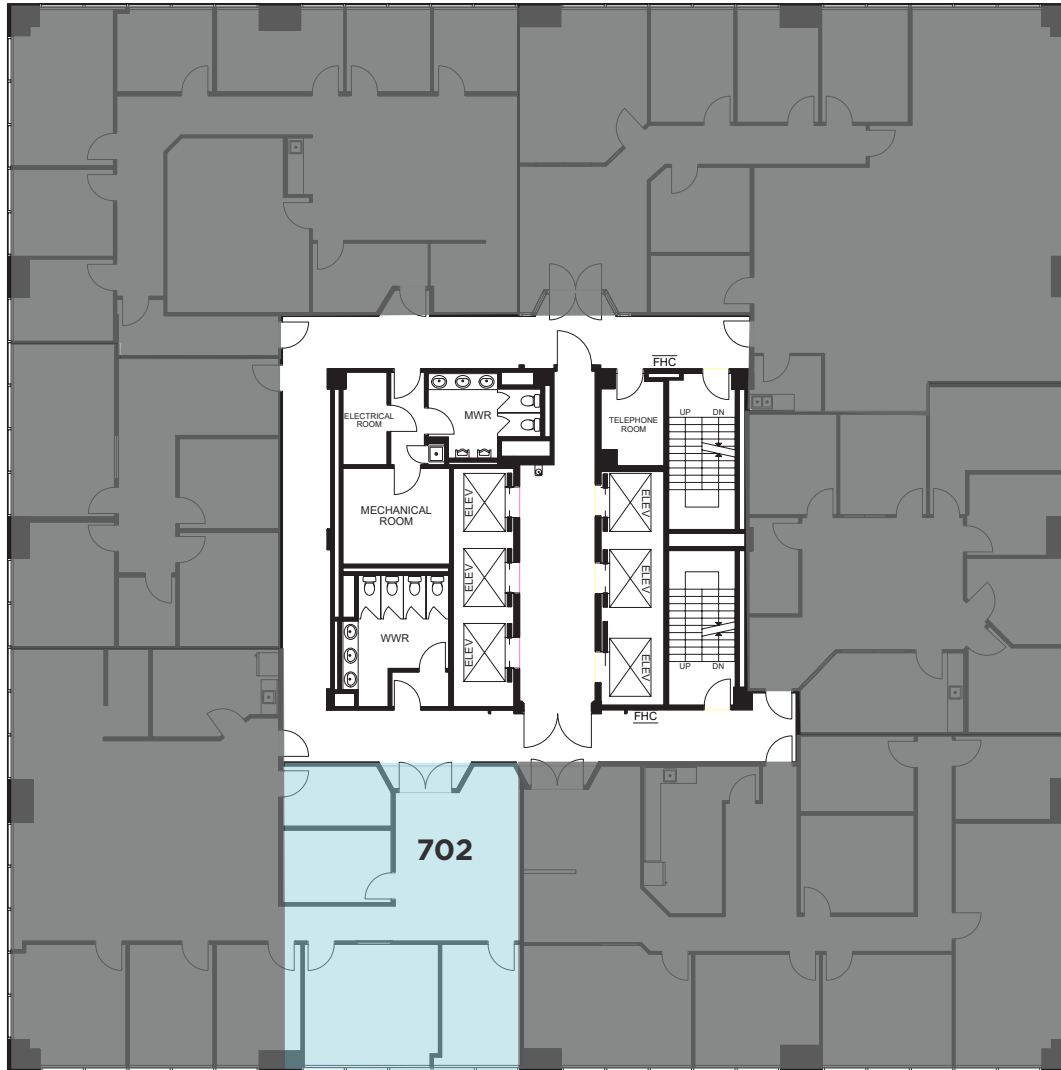
 Suite 1207 - 7,366± SF  
*(can be demised into 2 suites)*

 - Leased



# SEVENTH FLOOR

20 N ORANGE AVE, ORLANDO, FL 32801



## 7<sup>TH</sup> FLOOR AVAILABILITY

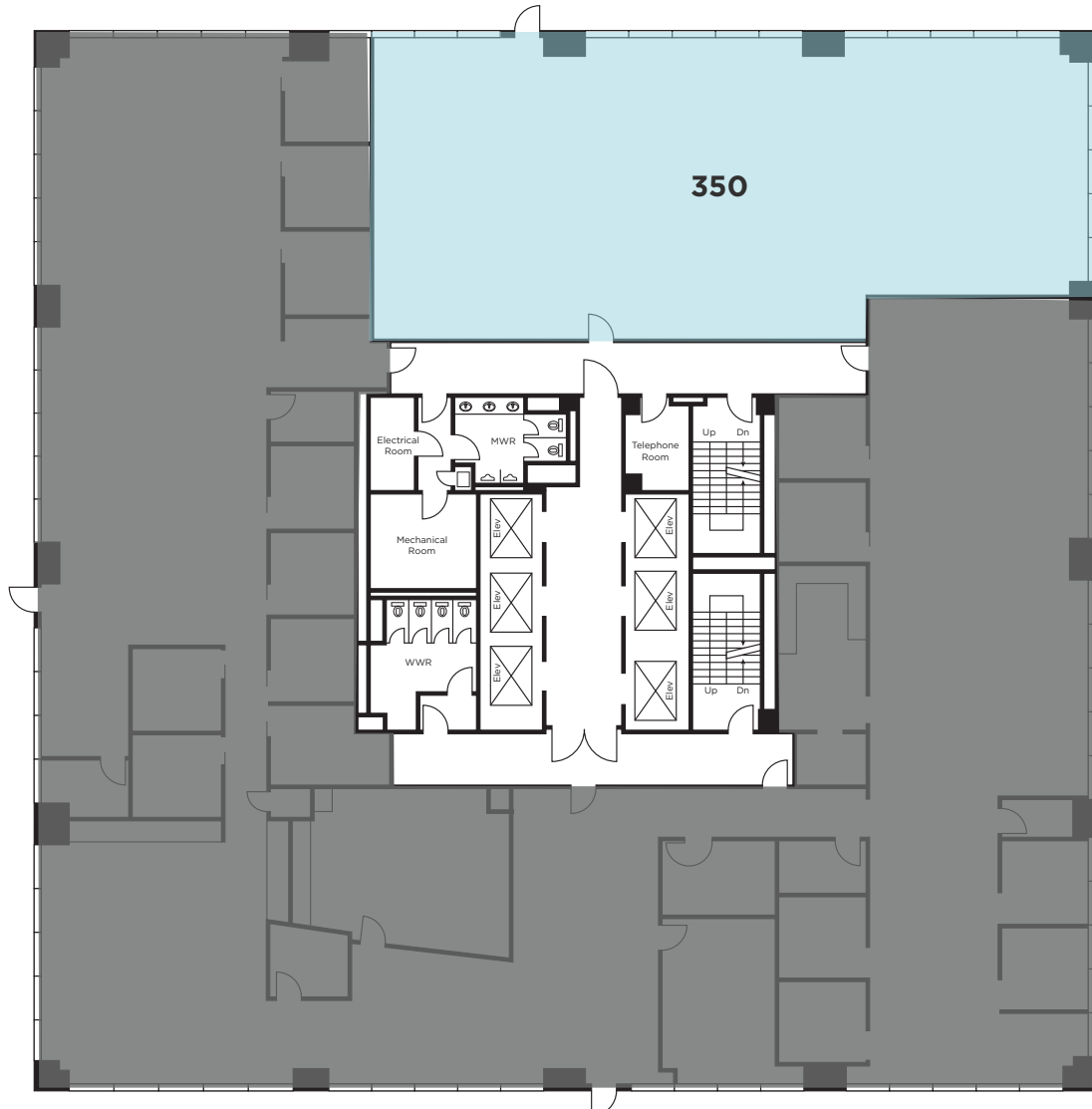
SPACE 1,196 SF

- Suite 702 - 1,196± SF

■ - Leased

# THIRD FLOOR

20 N ORANGE AVE, ORLANDO, FL 32801



## 3<sup>RD</sup> FLOOR AVAILABILITY

SPACE 3,501 SF

• Suite 350 - 3,501± SF (*shell space*)

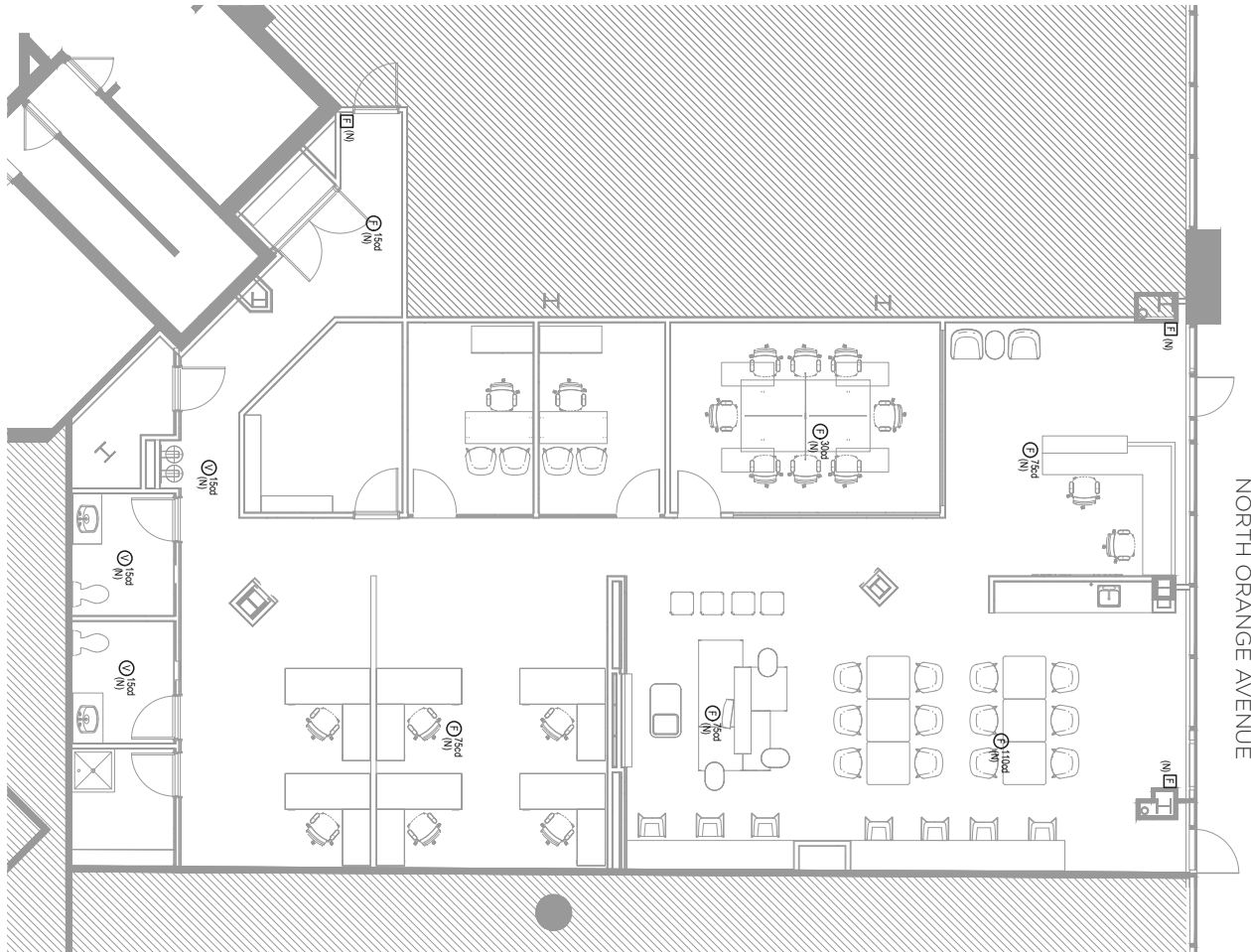
■ - Leased

ROBERT KELLOGG, CCIM  
Managing Director  
+1 407 541 4416  
robert.kellogg@cushwake.com

# FIRST FLOOR

20 N ORANGE AVE, ORLANDO, FL 32801

**20**  
NORTH  
ORANGE



## 1<sup>ST</sup> FLOOR AVAILABILITY

### STREET LEVEL

- Suite 102B - 3,555± SF (*available 7/26*)

**ROBERT KELLOGG, CCIM**  
Managing Director  
+1 407 541 4416  
robert.kellogg@cushwake.com

**BANYAN STREET**  
CAPITAL

**CUSHMAN &  
WAKEFIELD**