



4130 Cahuenga Boulevard

Suite 206

Toluca Lake, California 91602

Sublease Highlights

- Double Door Elevator Suite Entrance
- Newly Constructed High-End Improvements & Finishes
- Creative Design Combining 28 Open Desks and 10 Private Offices
- 1 Large and 1 Small Conference Room
- 1 Quiet Room
- 1 In Suite Restroom
- Layout Allows For 38 Personnel
- Secured Subterranean Parking Garage & Street Parking
- Adjacent to Universal Studios

Sublease Rate: Negotiable

Sublease Term: Through July 31, 2027

Parking Cost: \$95 Per Space - All Tandem



For More Information

Mark O'Brien

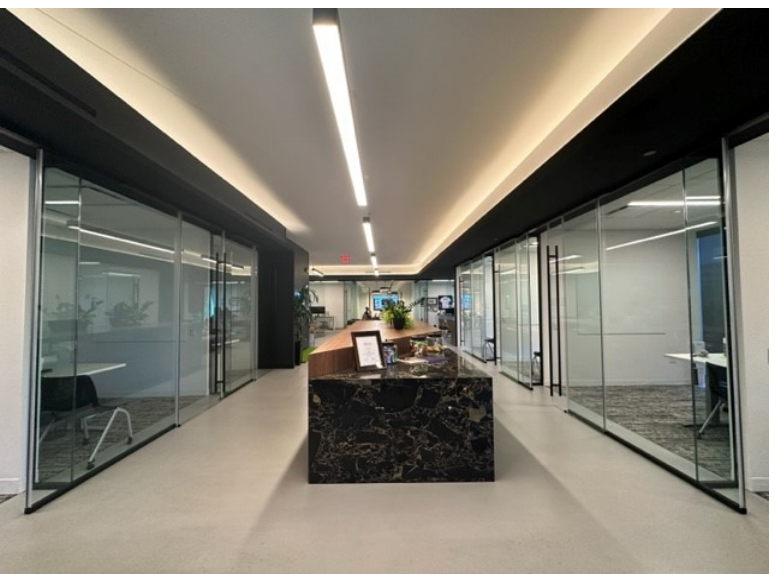
O: 213 632 7712

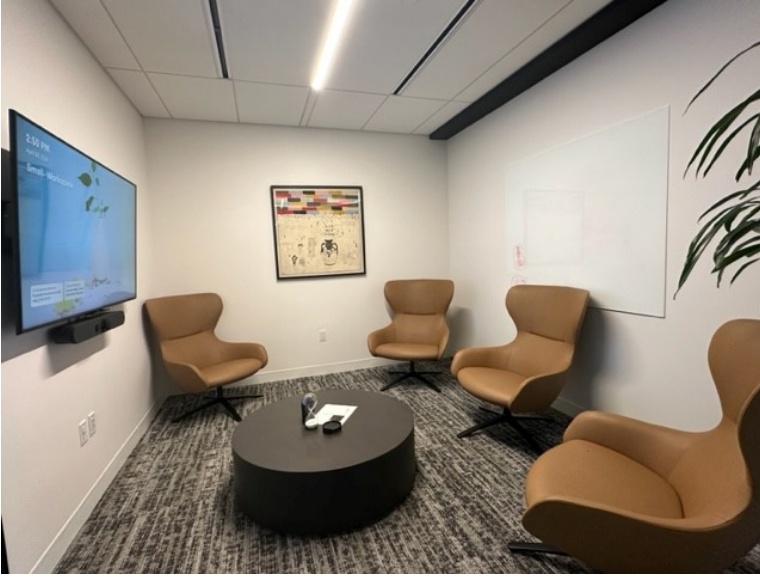
mobrien@naicapital.com | CalDRE #01120143

Gregory J Maradei

O: 213 632 7713

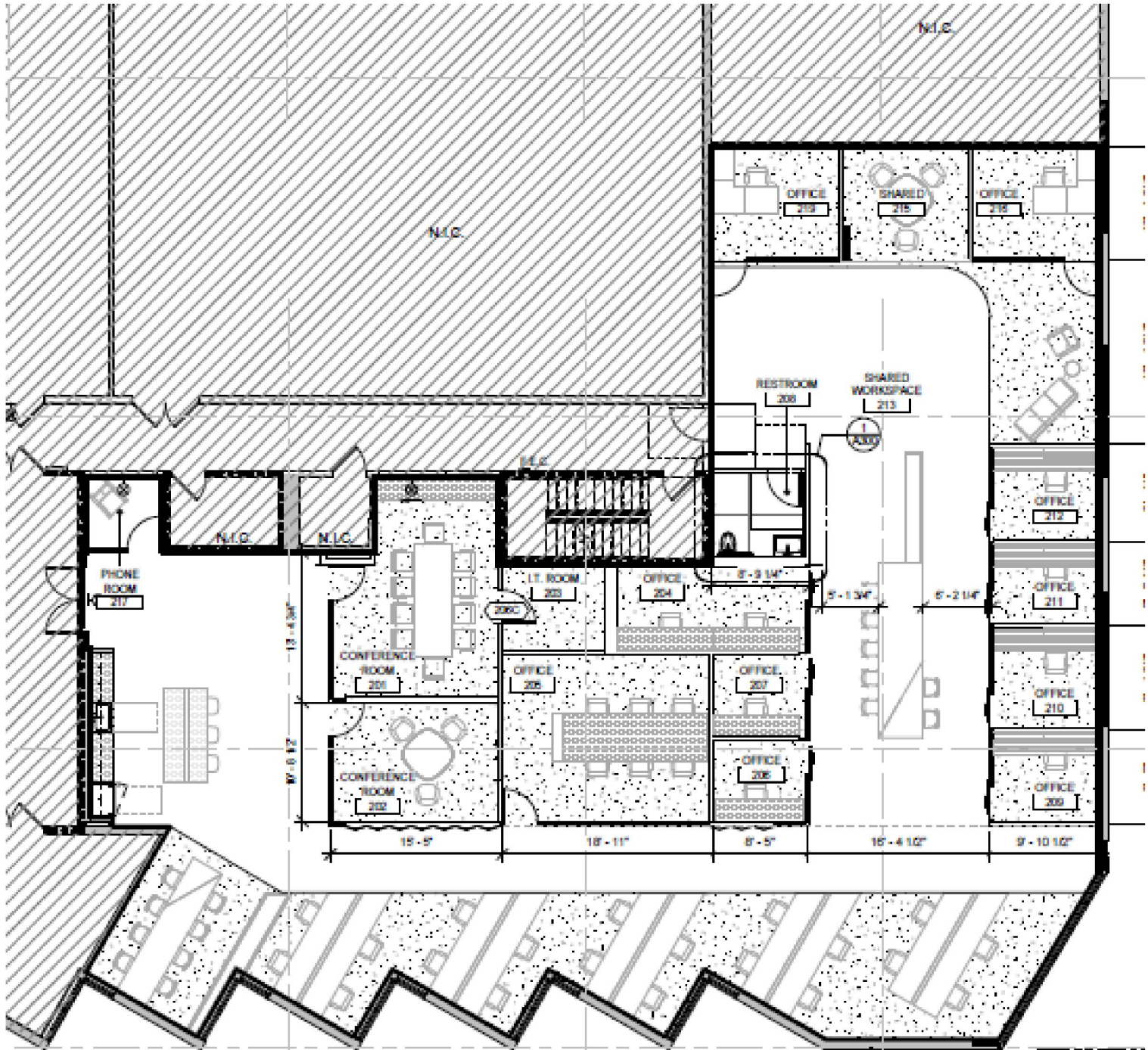
gmaradei@naicapital.com | CalDRE #01137632





No warranty, express or implied, is made as to the accuracy of the information contained herein. This information is submitted subject to errors, omissions, change of price, rental or other conditions, withdrawal without notice, and is subject to any special listing conditions imposed by our principals. Cooperating brokers, buyers, tenants and other parties who receive this document should not rely on it, but should use it as a starting point of analysis, and should independently confirm the accuracy of the information contained herein through a due diligence review of the books, records, files and documents that constitute reliable sources of the information described herein. Logos are for identification purposes only and may be trademarks of their respective companies. NAI Capital, Inc. CAL DRE Lic. #02130474

707 Wilshire Boulevard, Suite 5125
Los Angeles, CA 90017
213 632 7700 tel
naicapital.com



No warranty, express or implied, is made as to the accuracy of the information contained herein. This information is submitted subject to errors, omissions, change of price, rental or other conditions, withdrawal without notice, and is subject to any special listing conditions imposed by our principals. Cooperating brokers, buyers, tenants and other parties who receive this document should not rely on it, but should use it as a starting point of analysis, and should independently confirm the accuracy of the information contained herein through a due diligence review of the books, records, files and documents that constitute reliable sources of the information described herein. Logos are for identification purposes only and may be trademarks of their respective companies. NAI Capital, Inc. CAL DRE Lic. #02130474

707 Wilshire Boulevard, Suite 5125
 Los Angeles, CA 90017
 213 632 7700 tel
naicapital.com