

# 982 Fulton Street

Clinton Hill

Retail for Lease  
1,240 - 2,930 SF



## SUMMARY

Newly-demised corner retail spaces in Clinton Hill, steps from the A, C, and S trains.

This premier high street location offers excellent foot traffic, exceptional visibility, and approximately 140 feet of frontage, complemented by 12-foot-plus ceiling heights. The spaces total 2,930 SF, thoughtfully divided into Space A (1,240 SF) and Space B (1,690 SF), allowing flexibility for a variety of concepts.

With 113 luxury residences above and the nearby recently rezoned Atlantic Avenue Mixed-Use Plan set to bring another 4,600 new residential units to the area, this location is ideal for a café, neighborhood amenity, or boutique fitness operator.

## LEASABLE AREA

Total: 2,930 SF  
Space A: 1,240 SF  
Space B: 1,690 SF

## CEILING HEIGHTS

12+ feet

## CROSS STREETS

Corner of Grand Avenue

## PRICING & TERMS

Available upon request

## TRANSPORTATION



For more information, contact exclusive agents:



**Darlene Lee**  
Associate  
dlee@terrarcg.com

**Nelson Kim**  
Associate  
nkim@terrarcg.com

**Kyle Williams**  
Director  
kwilliams@terrarcg.com

**Peter Schubert**  
Managing Director  
pschubert@terrarcg.com

**(718) 768-7788**  
terrarcg.com

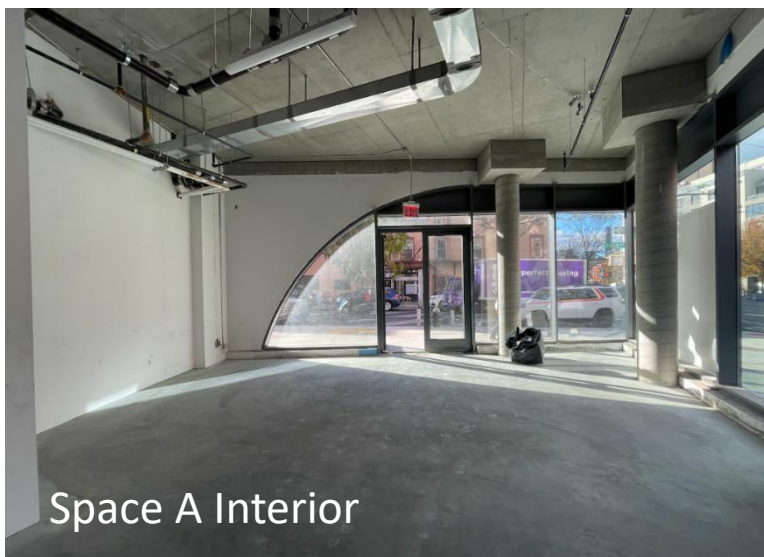
# 982 Fulton Street

Clinton Hill

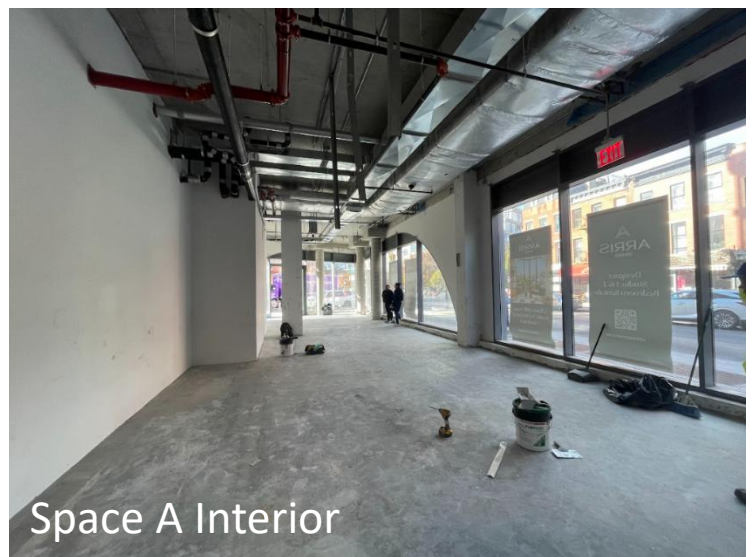
Retail for Lease  
1,240 - 2,930 SF



Space A Interior



Space A Interior



Space A Interior

For more information, contact exclusive agents:



**Darlene Lee**  
Associate  
dlee@terrarg.com

**Nelson Kim**  
Associate  
nkim@terrarg.com

**Kyle Williams**  
Director  
kwilliams@terrarg.com

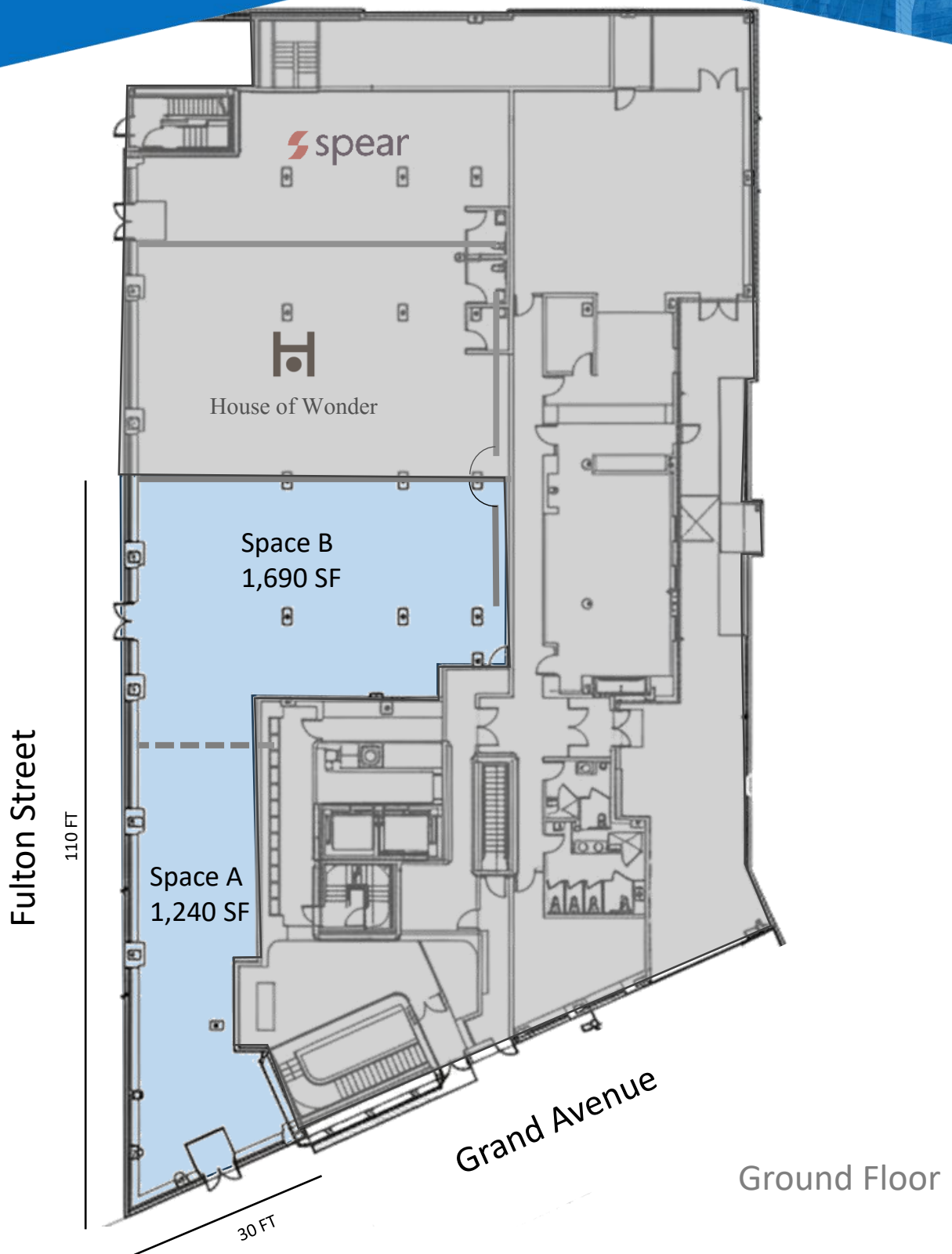
**Peter Schubert**  
Managing Director  
pschubert@terrarg.com

**(718) 768-7788**  
terrarg.com

# 982 Fulton Street

Clinton Hill

Retail for Lease  
1,240 - 2,930 SF



For more information, contact exclusive agents:



**Darlene Lee**  
Associate  
dlee@terracrg.com

**Nelson Kim**  
Associate  
nkim@terracrg.com

**Kyle Williams**  
Director  
kwilliams@terracrg.com

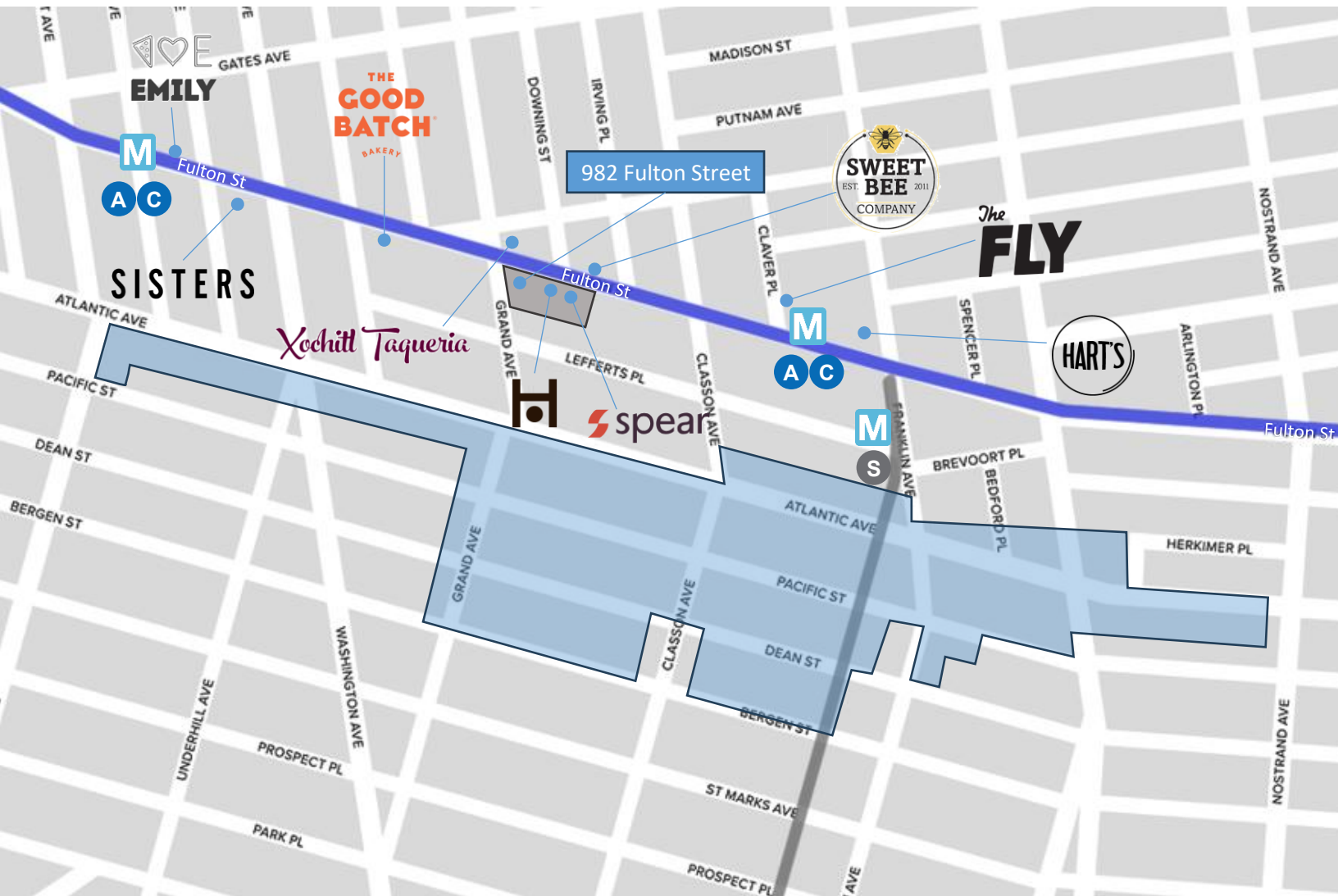
**Peter Schubert**  
Managing Director  
pschubert@terracrg.com

**(718) 768-7788**  
terracrg.com

# 982 Fulton Street

Clinton Hill

Retail for Lease  
1,240 - 2,930 SF



 Atlantic Avenue Mixed-Use Plan (AAMUP) Rezoning

 982 Fulton Street (Arris Grand) Building

The information provided herein has either been given to us by the owner of the property or was obtained from sources we deem reliable. We do not guarantee the accuracy of any information. All zoning, existing square feet of buildings, available buildable square feet, permitted uses and any other information provided herein must be independently verified. The value of any real estate investment is dependent upon a variety of factors including income, vacancy rates, expense estimates, tax brackets and general market assumptions, all of which should be evaluated by your tax advisor and/or legal counsel. Prospective buyer and tenants should carefully verify each item of information herein.

For more information, contact exclusive agents:



**Darlene Lee**  
Associate  
dlee@terrarg.com

**Nelson Kim**  
Associate  
nkim@terrarg.com

**Kyle Williams**  
Director  
kwilliams@terrarg.com

**Peter Schubert**  
Managing Director  
pschubert@terrarg.com

**(718) 768-7788**

terrarg.com