

# FOR SUBLEASE

7,248 SF of Industrial Space

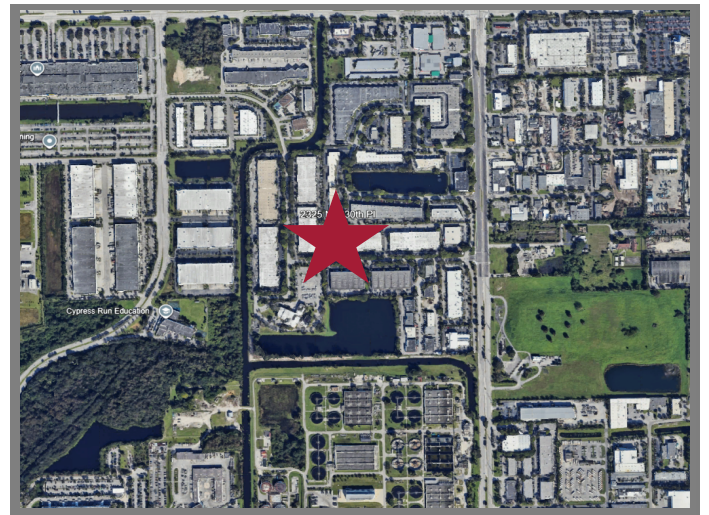
2325 NW 30th Place

Pompano Beach, FL



## BAY 7:

- 7,248 SF Total
- 1,300 SF of Office
- 20' Clear Ceiling Height
- One (1) Dock High Door (well)
- One (1) Grade Level Door
- Parking Ratio: 2.0/1,000 SF
- Sublease Expires: 07/31/2026
- Asking Rate: \$13,500 / Monthly Gross



**For Leasing Information contact:**

**Michael Foxwell, Jr.**

(443) 328-5165

[mfoxwell@theeastongroup.com](mailto:mfoxwell@theeastongroup.com)



[www.TheEastonGroup.com](http://www.TheEastonGroup.com)

10165 NW 19<sup>th</sup> Street, Doral, FL 33172

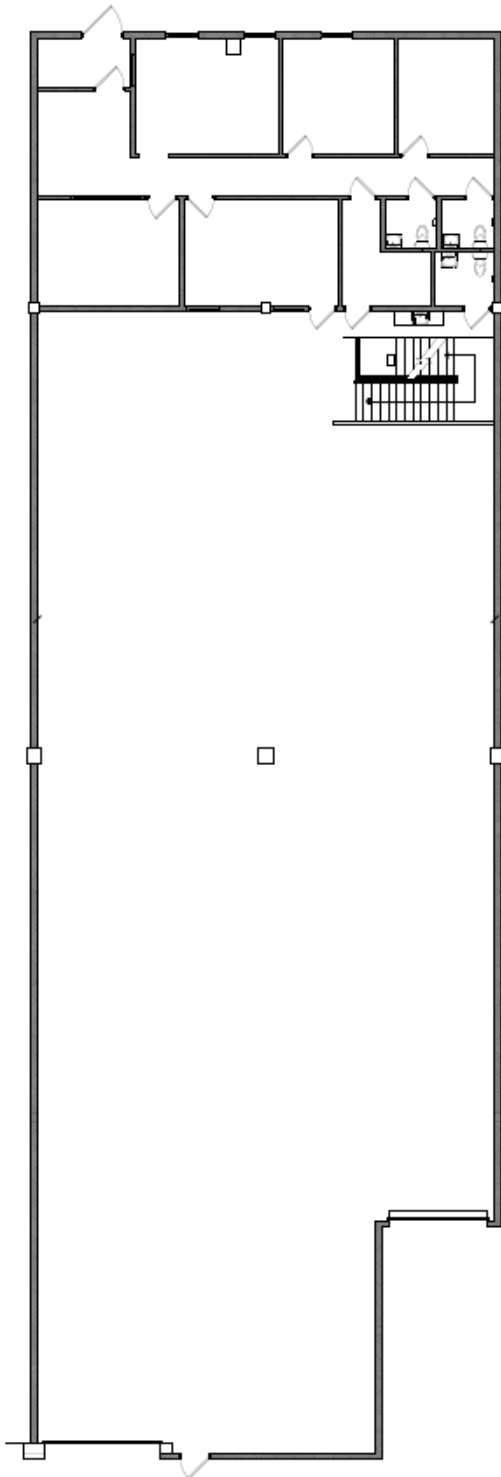
# FOR SUBLEASE

7,248 SF of Industrial Space

## 2325 NW 30th Place

Pompano Beach, FL

Floor Plan



Mezzanine Plan

