

Full Floor - Office Intensive - Creative Loft

110 West 27th Street - NoMad / Chelsea - Bet. 6th & 7th Avenues



Boutique NoMad / Chelsea loft building with renovated lobby just off 6th Avenue.

- Top full floor with 3 skylights
- 8 offices/breakouts
- 2 conference rooms
- Large pantry
- Tenant controlled A/C
- 2 restrooms
- Wood floors
- Tin ceilings
- Exposed brick

Located in the vibrant NoMad neighborhood, surrounded by all the lunchtime favorites – Pecora, The Smith, Hill Country, KazuNori, Eataly, every QSR, and one of the highest concentration of Michelin starred after work dining and drinks options.

Steps from Madison Sq Park and conveniently close to 1, 9, N, R and 6 trains, the Path Train and Penn Station.

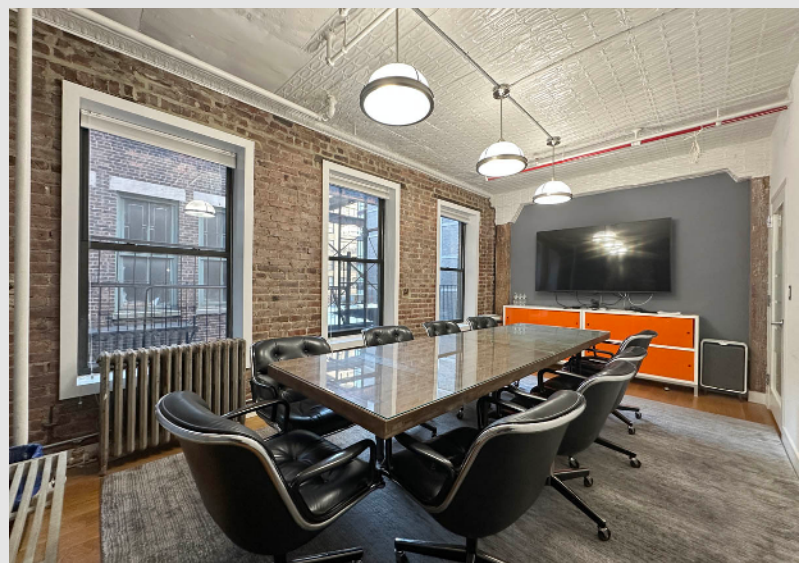
Size: 4,000 SF

Possession: Immediate

Rent: \$48/SF

Term: 5-10 Years

Electric: Direct



R&A

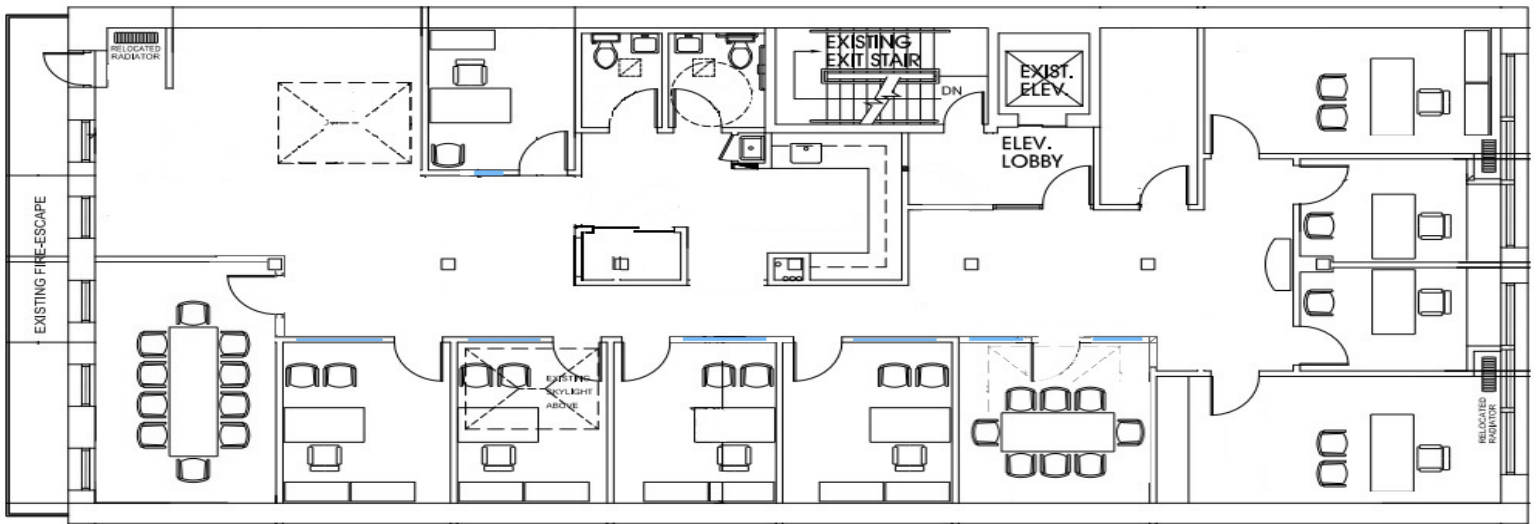
Doug Rice - 212-253-8703 - Doug@NYCspaces.com

Elissa Groh - 212-253-8707 - Elissa@NYCspaces.com

Rice & Associates - www.NYCspaces.com

Full Floor - Office Intensive - Creative Loft

110 West 27th Street - Chelsea - Between 6th & 7th Avenues



4,000 SF - Furniture Test Fit



Doug Rice - 212-253-8703 - Doug@NYCspaces.com

Elissa Groh - 212-253-8707 - Elissa@NYCspaces.com

Rice & Associates - www.NYCspaces.com