

Coastland Center

Naples, Florida



Coastland Center Property Overview

Coastland Center is located in the heart of the commercial hub of Naples, delivering a strong lineup of national retailers and dining options. This shopping center is the preferred destination for year-round residents, seasonal visitors, and tourists in the market. Just minutes from Interstate 75, it is also the only enclosed regional shopping center in the area. Coastland Center features department stores such as Dillard's, JCPenney, and Macy's, as well as national brands like The Cheesecake Factory, Express, H&M, Old Navy, JD Sports, and Uncle Julio's. Family-friendly amenities include comfortable seating areas, the Everglades Adventure soft play area, and the area's only carousel, all in a lush, tropical setting.

PROPERTY INFORMATION

Address: 1900 Tamiami Trail North
Market: Naples, FL
Total Retail Square Footage: 800,000+

TRADE AREA PROFILE

2024 Population: 423,037
2024 Households: 183,133
2024 % of Households:
w/Income \$75k+: 59.8%
w/Income \$100k+: 47.08%
2024 Average Household Income: \$141,301
2024 % Pop Age 25+ w/Bachelor's Degree
or Higher: 40.9%
2024 Average Home Value: \$1,069,000
2029 Projected Population: 445,764
2029 Projected Households: 191,763
2029 Projected Average Household Income: \$184,988

7-MILE RADIUS

2024 Population: 178,226
2024 Households: 79,782
2024 % of Households:
w/Income \$75k+: 56.67%
w/Income \$100k+: 44.04%
2024 Average Household Income: \$146,298
2024 % Pop Age 25+ w/Bachelor's Degree
or Higher: 41.39%
2024 Average Home Value: \$1,275,893
2029 Projected Population: 174,728
2029 Projected Households: 78,242
2029 Projected Average Household Income: \$194,722

DAYTIME EMPLOYMENT

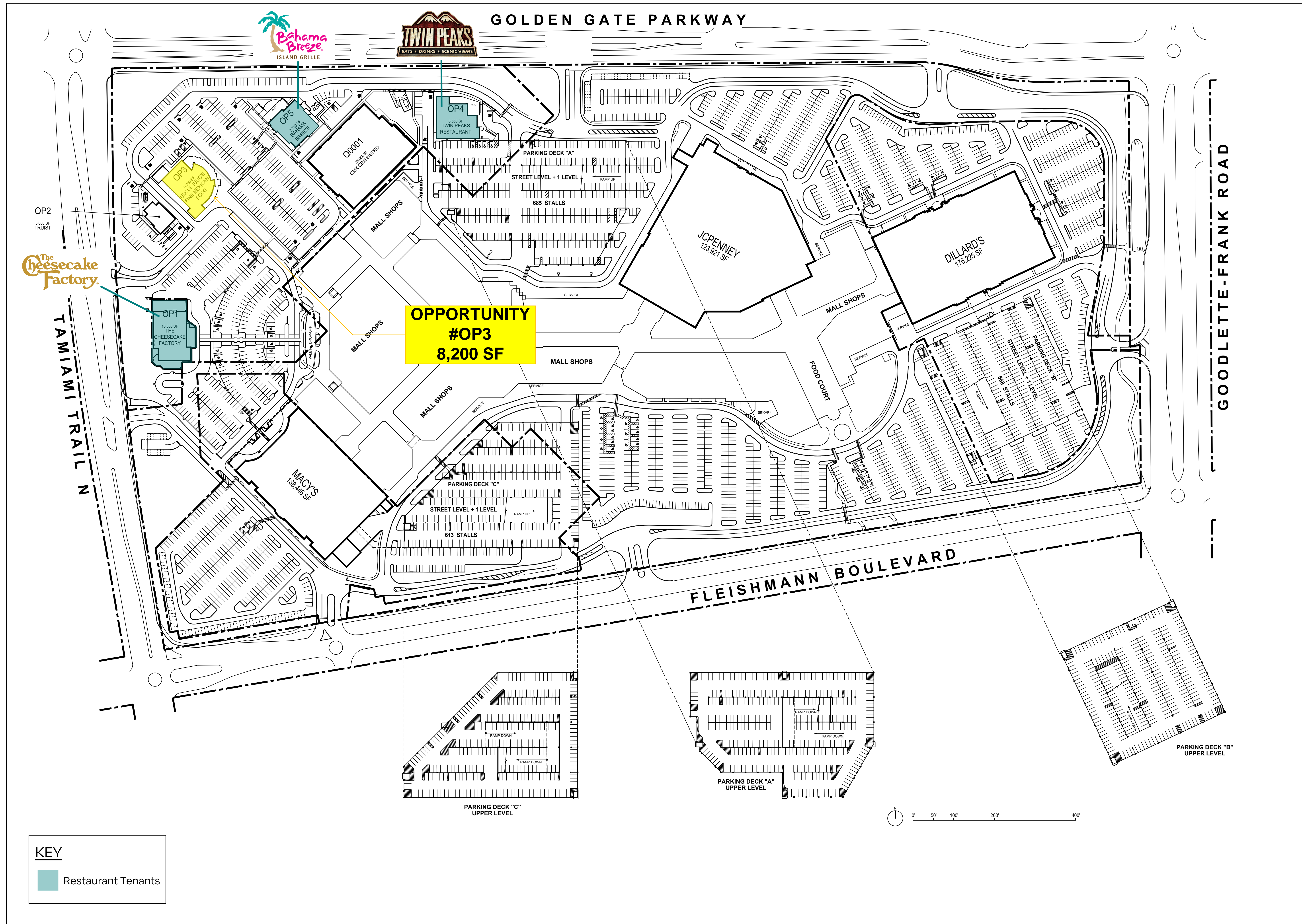
3-mile radius total: 42,353
White Collar: 59.77%
Executive/Professional: 39.04%
5-Mile radius: 68,020
White Collar: 59.55%
Executive/Professional: 38.96%



SOURCE: SYNERGOS

OPPORTUNITY

Space #OP3
8,200 sq ft



**OPPORTUNITY
#OP3
8,200 SF**

KEY	
	Restaurant Tenants

GGP

COASTLAND CENTER
1900 TAMiami TRAIL NORTH
NAPLES, FLORIDA 34102

TENANT NAMES SHOWN ON THIS PLAN REPRESENT LEASES WHICH ARE EXECUTED, OUT FOR SIGNATURE, OR IN NEGOTIATION. SPECIFIC NAMES, LOCATIONS, DIMENSION OF ANY STORE, ENTRANCE, OR IMPROVEMENT ARE SUBJECT TO CHANGE, MODIFICATION AND DELETION BY LANDLORD OR OTHER PARTIES, AND ARE NOT A REPRESENTATION OF, OR WARRANTY AS TO THE OPENING OR CONTINUED OPERATION OF ANY STORE NAMED OR DEPICTED ON THIS PLAN.

NOTWITHSTANDING THAT CERTAIN OF THE ELEMENTS, INCLUDING BUT NOT LIMITED TO THE TENANT NAMES SHOWN ON THIS PLAN MAY BE INDICATED AS FUTURE OR PROPOSED, LANDLORD MAKES NO REPRESENTATION THAT THE FUTURE DEVELOPMENT WILL OCCUR AS SHOWN.

ALL TENANT LEASE AREAS ARE MEASURED FROM THE CENTERLINE OF INTERIOR PARTITION FROM THE OUTSIDE FACE OF EXTERIOR WALL, FROM THE FULL THICKNESS OF CORRIDOR AND SHAFT WALLS AND FROM THE EDGE OF SLAB AT ANCHOR STORE WALLS.

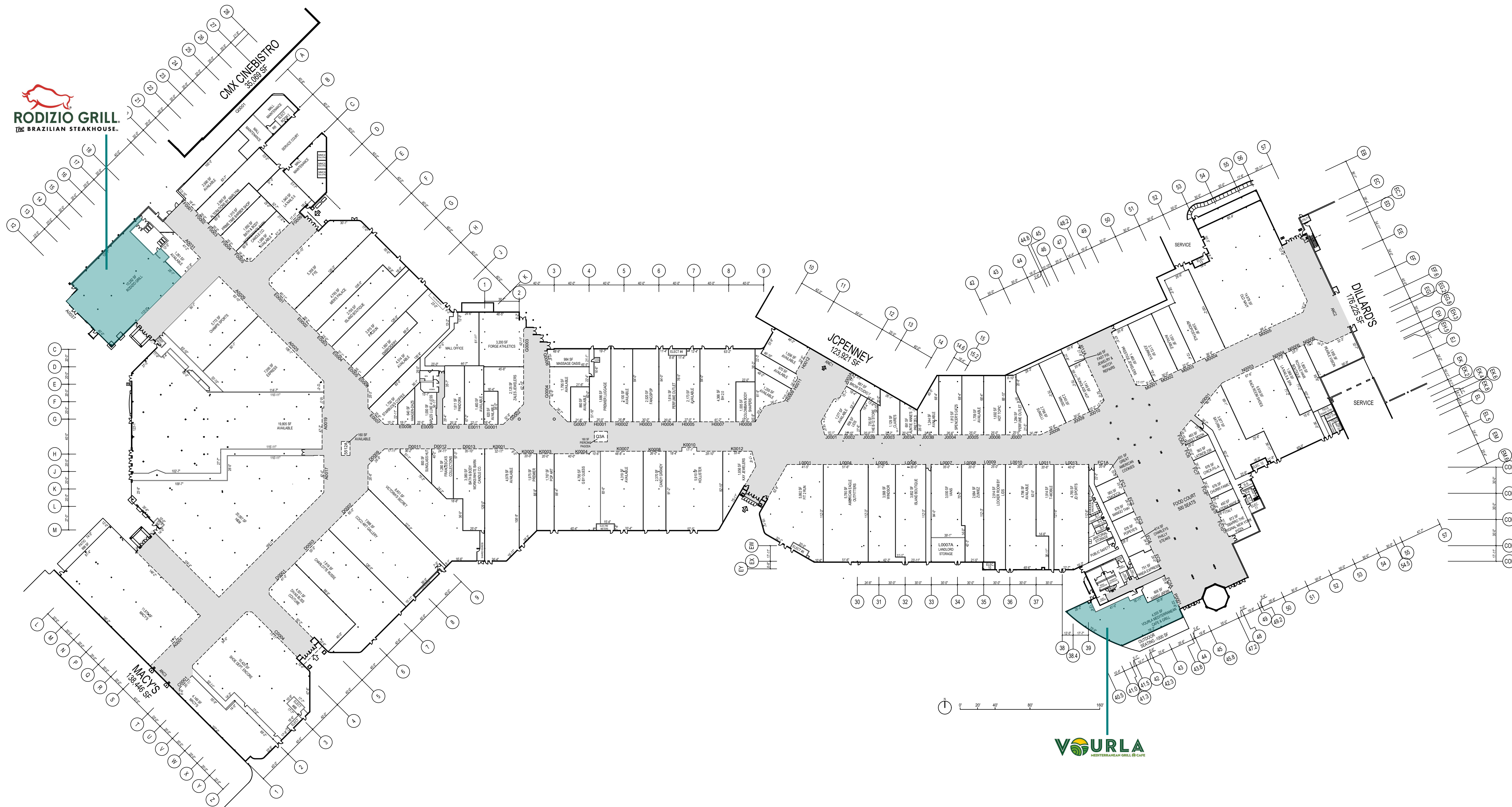
PROJECT NO: 2024
DRAWN BY: ACS
GGP Retail LLC

DESCRIPTION
SITE PLAN

SHEET NO.
SP1

DATE: 02/02/2026

COASTLAND CENTER
 1900 TAMiami TRAIL NORTH
 NAPLES, FLORIDA 34102



KEY

Restaurant Tenants

TENANT NAMES SHOWN ON THIS PLAN REPRESENT LEASES WHICH ARE EXECUTED, OUT FOR SIGNATURE, OR IN NEGOTIATION. SPECIFIC NAMES, LOCATIONS, DIMENSION OF ANY STORE, ENTRANCE, OR IMPROVEMENT ARE SUBJECT TO CHANGE, MODIFICATION AND DELETION BY LANDLORD OR OTHER PARTIES, AND ARE NOT A REPRESENTATION OF, OR WARRANTY AS TO THE OPENING OR CONTINUED OPERATION OF ANY STORE NAMED OR DEPICTED ON THIS PLAN.

NOTWITHSTANDING THAT CERTAIN OF THE ELEMENTS, INCLUDING BUT NOT LIMITED TO THE TENANT NAMES SHOWN ON THIS PLAN MAY BE INDICATED AS FUTURE OR PROPOSED, LANDLORD MAKES NO REPRESENTATION THAT THE FUTURE DEVELOPMENT WILL OCCUR AS SHOWN.

ALL TENANT LEASE AREAS ARE MEASURED FROM THE CENTERLINE OF INTERIOR PARTITION FROM THE OUTSIDE FACE OF EXTERIOR WALL, FROM THE FULL THICKNESS OF CORRIDOR AND SHAFT WALLS AND FROM THE EDGE OF SLAB AT ANCHOR STORE WALLS.

PROJECT NO: 2024
 DRAWN BY: GK
 GGP Retail LLC

DESCRIPTION

LEASE PLAN

SHEET NO.

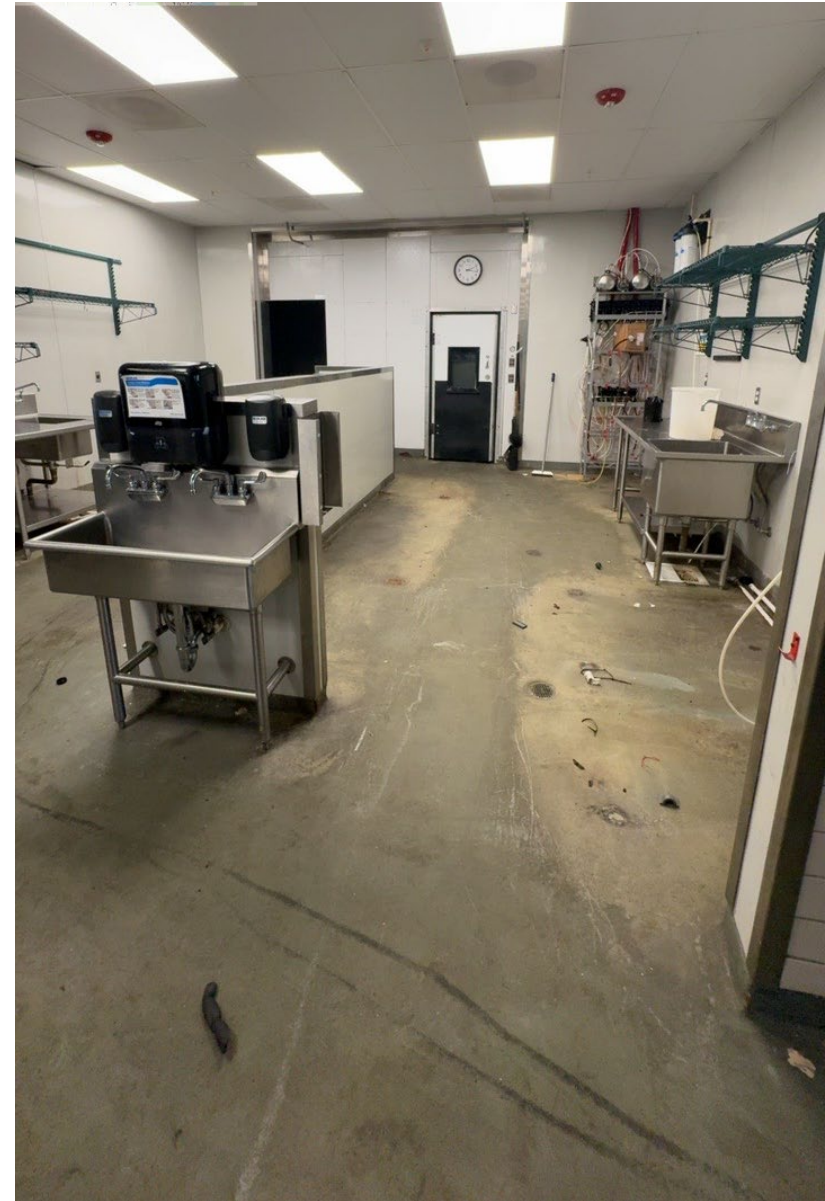
LP1

DATE: 02/02/2026









CORE BELIEFS

Cater to the unique
needs of consumers

Highlight small
businesses

Partner with
national brands

Provide jobs + resources
to communities

GGP

At GGP, we see every tenant as a partner in progress. Our role goes beyond providing square footage; we're here to fuel your growth with strategic support, innovative solutions, and a shared commitment to success.

With access to engaged consumers, tailored strategies, and a collaborative ecosystem, we help brands of all sizes not just find their footing but soar. When you win, we win—and that's the foundation of everything we do.

COASTLAND CENTER

RETAIL LEASING

Bob Whiting

317.400.8855

Robert.Whiting@ggp.com

BIG BOX LEASING

Alex Varon

646.593.7652

alex.varon@ggp.com

EAT / DRINK

Julian Soto

312.960.2895

Julian.Soto@ggp.com



GGP