

Retail Space | For Lease

CBRE

1059 De la Montagne, Montreal (Québec)







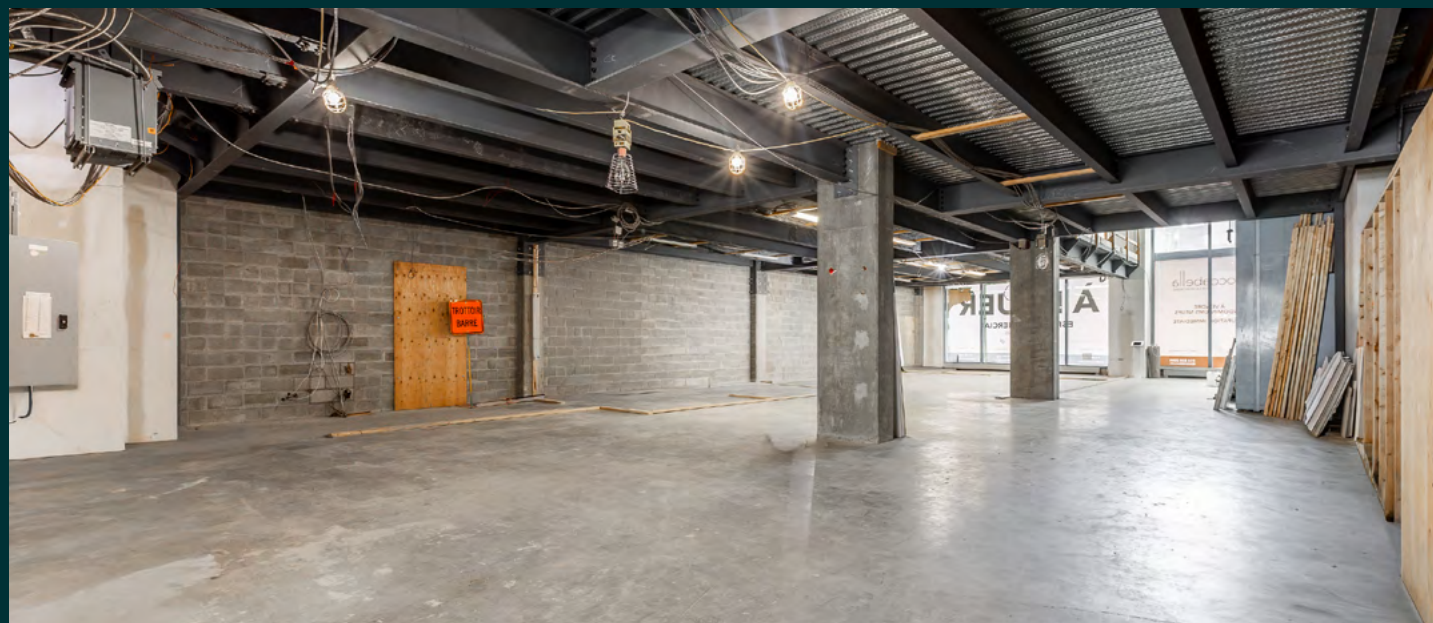
Lease Terms

Term	5-10 Years
Net Rent	
Ground Floor	\$55.00 per sq. ft.
Mezzanine	\$20.00 per sq. ft.
Additional Rent	
Ground Floor	\$20.00 per sq. ft.
Area	
Ground Floor	3,842 sq. ft.
Mezzanine	3,190 sq. ft.
Hydro	Metered
Availability	Immediate

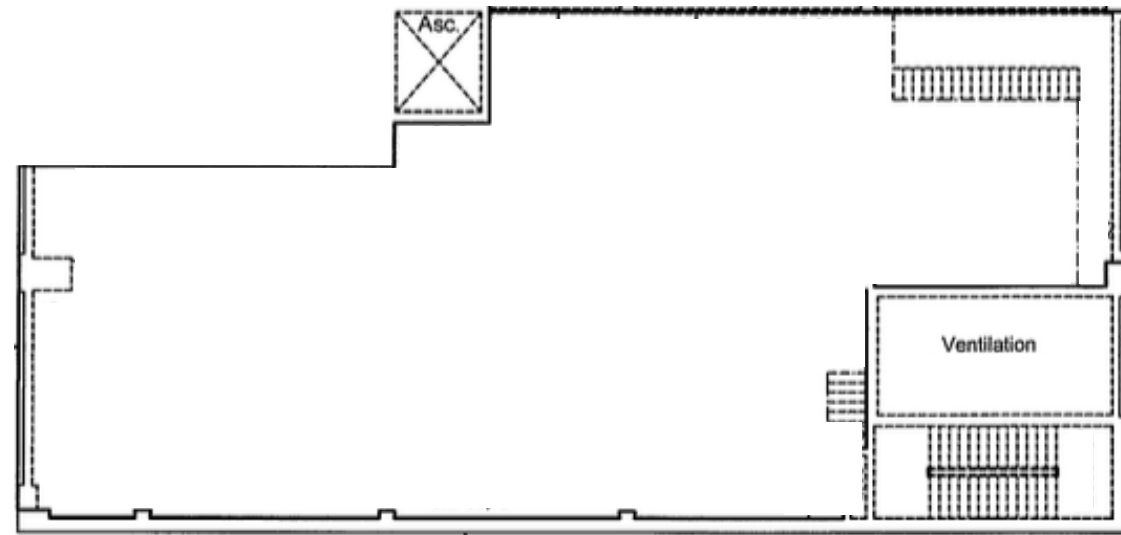


Property Details

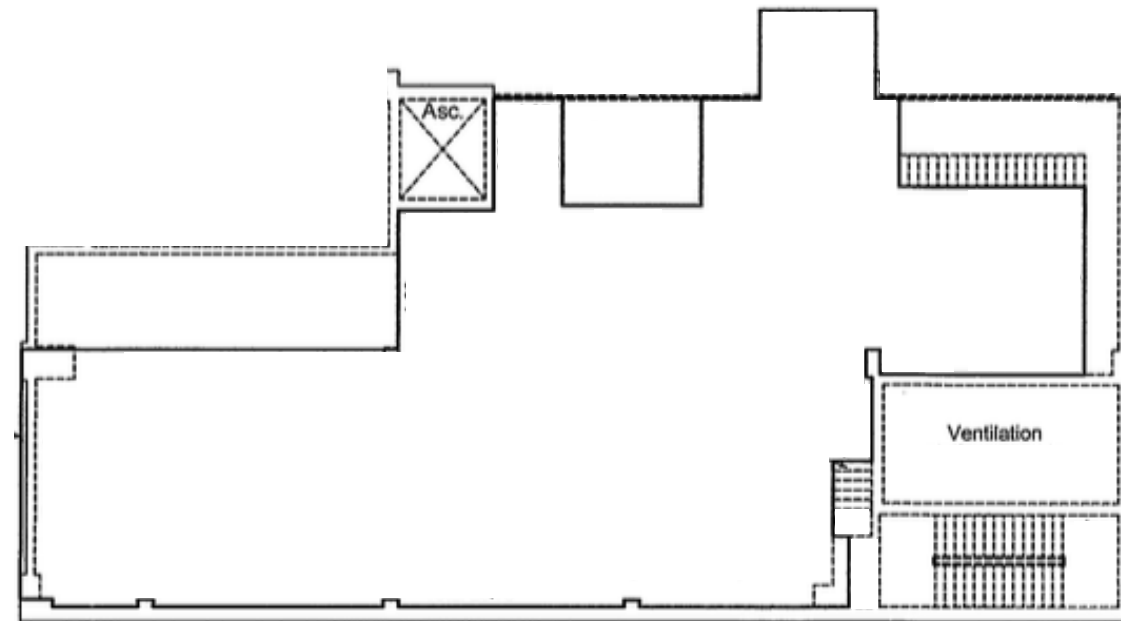
-  Situated on the corner of De la Montagne Street and René-Lévesque Boulevard West
-  Located on the ground floor of Roccabella's modern high-rise
-  Adjacent to Lucien-L'Allier metro station
-  Steps away from Montreal's premier shopping district as well as fine dining and cafes



Floor Plans

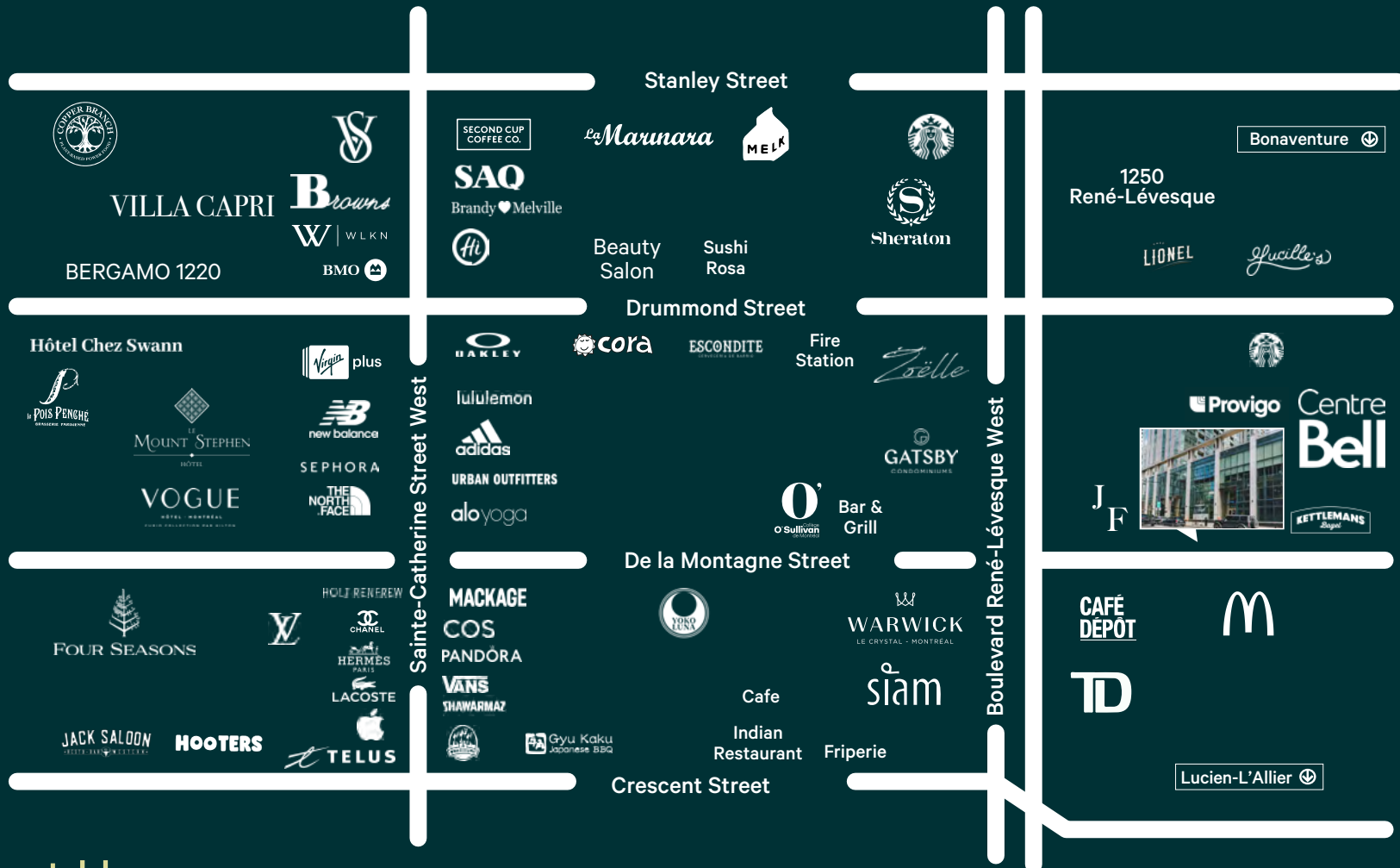


Ground Floor - 3,842 SQ. FT.



Mezzanine - 3,190 SQ. FT.





Contact Us

Christopher Rundle

Vice President

Real Estate Broker

+1 514 375 0818

christopher.rundle@cbre.com

Bryan Greenberg

Associate Vice President

Commercial Real Estate Broker

+1 514 375 2507

bryan.greenberg@cbre.com

Amanda Angela Herbu

Associate

Commercial Real Estate Broker

+1 514 375 0456

amanda.herbu@cbre.com

CBRE Limited, Real Estate Agency | 1250 René-Lévesque Blvd West, Suite 2800 | Montréal, Québec H3B 4W8 | +1 514 849 6000 | www.cbre.ca

This disclaimer shall apply to CBRE Limited, and to all divisions of the Corporation ("CBRE"). The information set out herein (the "Information") has not been verified by CBRE, and CBRE does not represent, warrant or guarantee the accuracy, correctness and completeness of the Information. CBRE does not accept or assume any responsibility or liability, direct or consequential, for the Information or the recipient's reliance upon the Information. The recipient of the Information should take such steps as the recipient may deem necessary to verify the Information prior to placing any reliance upon the Information. The information may change and any property described in the Information may be withdrawn from the market at any time without notice or obligation to the recipient from CBRE. Mapping Sources: Canadian Mapping Services canadamapping@cbre.com; DMTI Spatial, Environics Analytics, Microsoft Bing, Google Earth