



11151 SUN CENTER DRIVE

*±1,464 SF Space Available in
Prospect Park*

RANCHO CORDOVA, CA



PROJECT HIGHLIGHTS

Offered at \$1.45/SF, full serviced (no janitorial)

5% Commission to procuring agent

Central & convenient location

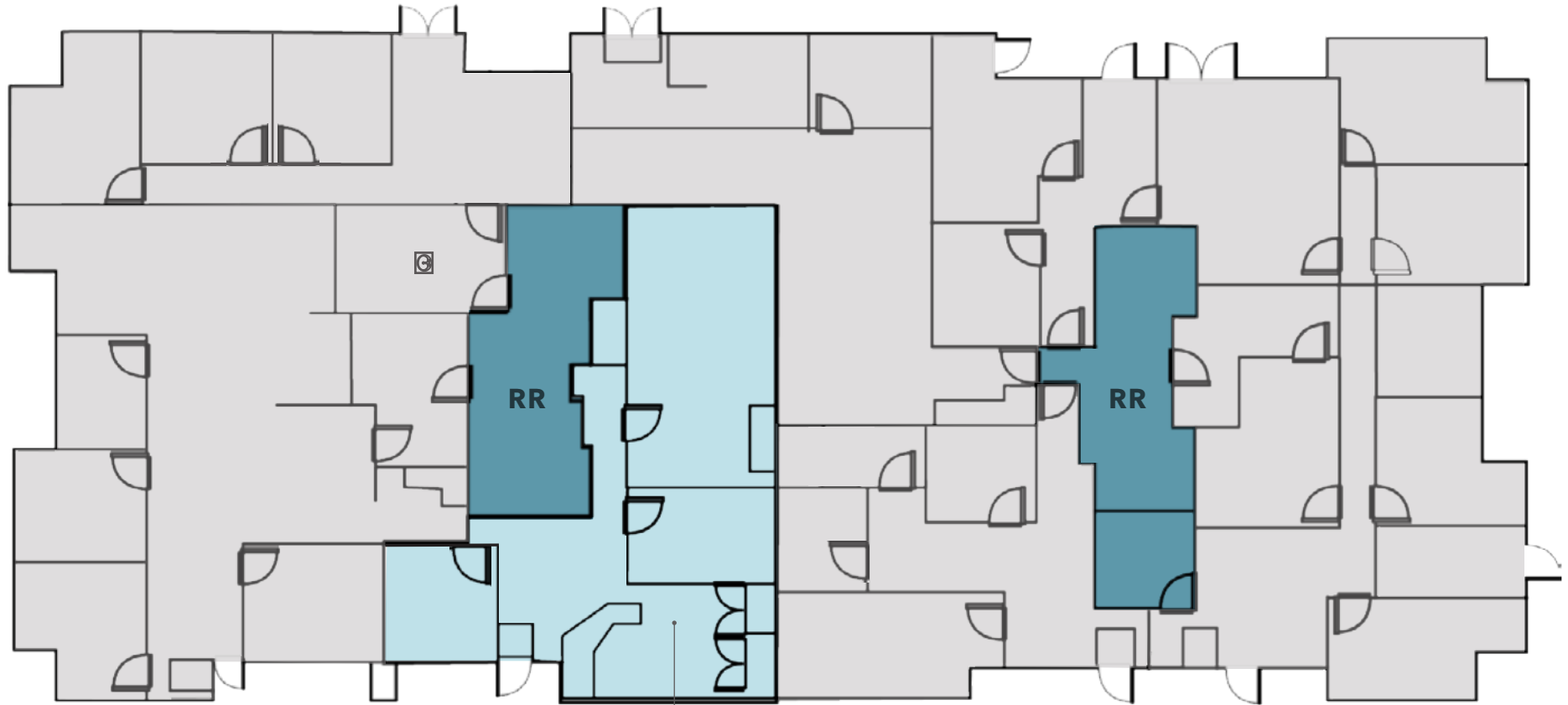
Near Highway 50, restaurants, shopping and hotels

Free parking available at 5.5 spaced per 1,000 SF leased

Single story building with excellent window line & professional environment

Well designed suites ready for occupancy

FLOOR PLAN



SUITE C
±1,464 SF

FLOOR PLAN NOT TO SCALE

11151 SUN CENTER DR



FOR LEASE

KIDDER MATHEWS



Exclusively listed by

TOM CONWELL
916.751.3626
tom.conwell@kidder.com
LIC N° 01394155

KIDDER.COM