

RESTAURANT SPACE

155 E 55TH STREET

LOCATED BETWEEN THIRD AND LEXINGTON AVENUES

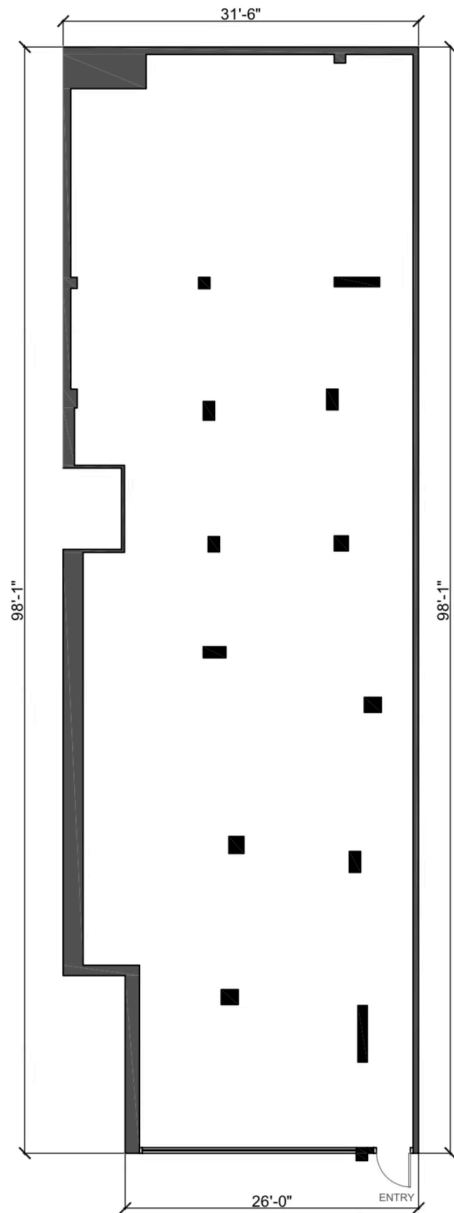
MIDTOWN EAST, NYC

4,000 SF
FOR LEASE



SPACE DETAILS

GROUND FLOOR



LOCATION

Between Third and Lexington Avenues

SIZE

Ground Floor	3,000 SF
Basement	1,000 SF
Total	4,000 SF

FRONTAGE

55th Street	26 FT
-------------	-------

CEILING HEIGHT

Ground Floor	9 FT
--------------	------

TERM

Long-term

RENT

Upon request

POSSESSION

Immediate

NEIGHBORS

Whole Foods, P.J. Clark's, Starbucks
Maman, Just Salad, Dos Toros
Chop & Go, Wolfgang's, P.F. Chang's

COMMENTS

Excellent visibility
White-box condition
Gas and venting in-place

SPACE IMAGES



155



CONTACT EXCLUSIVE BROKER

MARK GINDI

Mark@GindiRealtyAdvisors.com

347.673.0305