

# COPANS INDUSTRIAL PARK

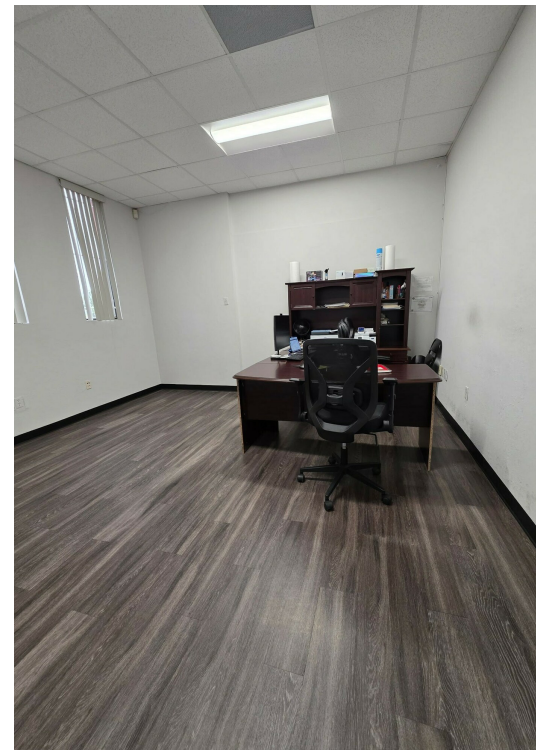
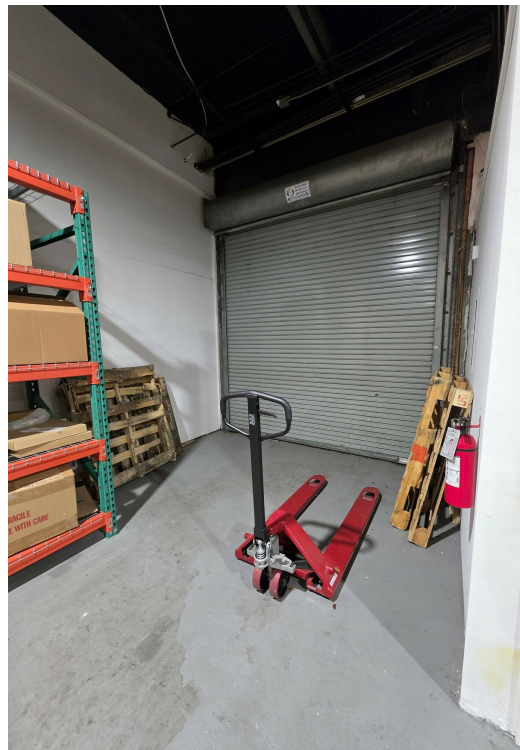
1901-1945 WEST COPANS ROAD, POMPANO BEACH, FL 33064

1903 W COPANS ROAD



## SPACE HIGHLIGHTS

- 3,400 SF
- 100% air-conditioned space
- Two offices totaling 436 SF
- 10' x 10' grade level overhead door
- 13'2" clear ceiling in warehouse
- 3 phase power
- Private restroom
- Pylon signage available



## NATALIE DELISLE

Property Manager / Sales Associate  
954.678.2362  
natalie@levyai.com



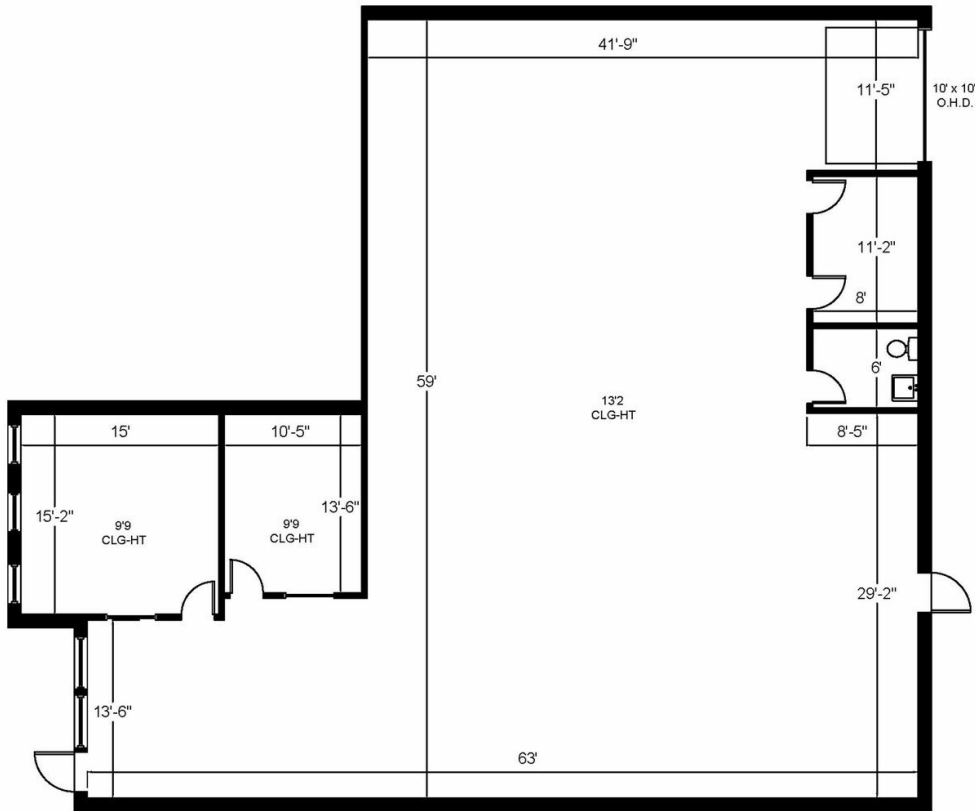
# COPANS INDUSTRIAL PARK

1901-1945 WEST COPANS ROAD, POMPANO BEACH, FL 33064

## FLOOR PLAN

### COPANS INDUSTRIAL PARK

1903 W Copans Road | Pompano Beach, FL 33069



Office - 436 Sq. Ft.  
Warehouse - 2,964 Sq. Ft.

3,400 Rentable Sq. Ft.  
[www.LevyRealtyAdvisors.com](http://www.LevyRealtyAdvisors.com)

#### NATALIE DELISLE

Property Manager / Sales Associate  
954.678.2362  
natalie@levyrai.com

