

PROPERTY DETAILS

- Unit 3689-3691
- 5,400 SF (15% office)
- Rental Rate: \$19.00 NNN + \$8.15 CAM
- 18' clear ceiling height
- 2 dock high door
- 1 grade level door
- Zoning: IL - Light Industrial (City of Lauderhill)
- Parking Ratio: 1.84/1,000 SF
- Strategically located just east of US-441 between the Fla. Tnpk. and I-95 providing easy access to all of south Florida

ABOUT PROPERTY



PRICE
\$19.00 (NNN)



YEAR BUILT
1985



AVAILABLE SF
5,400 SF



PARKING
1.84/1,000 SF



LOCATION
Lauderhill, FL

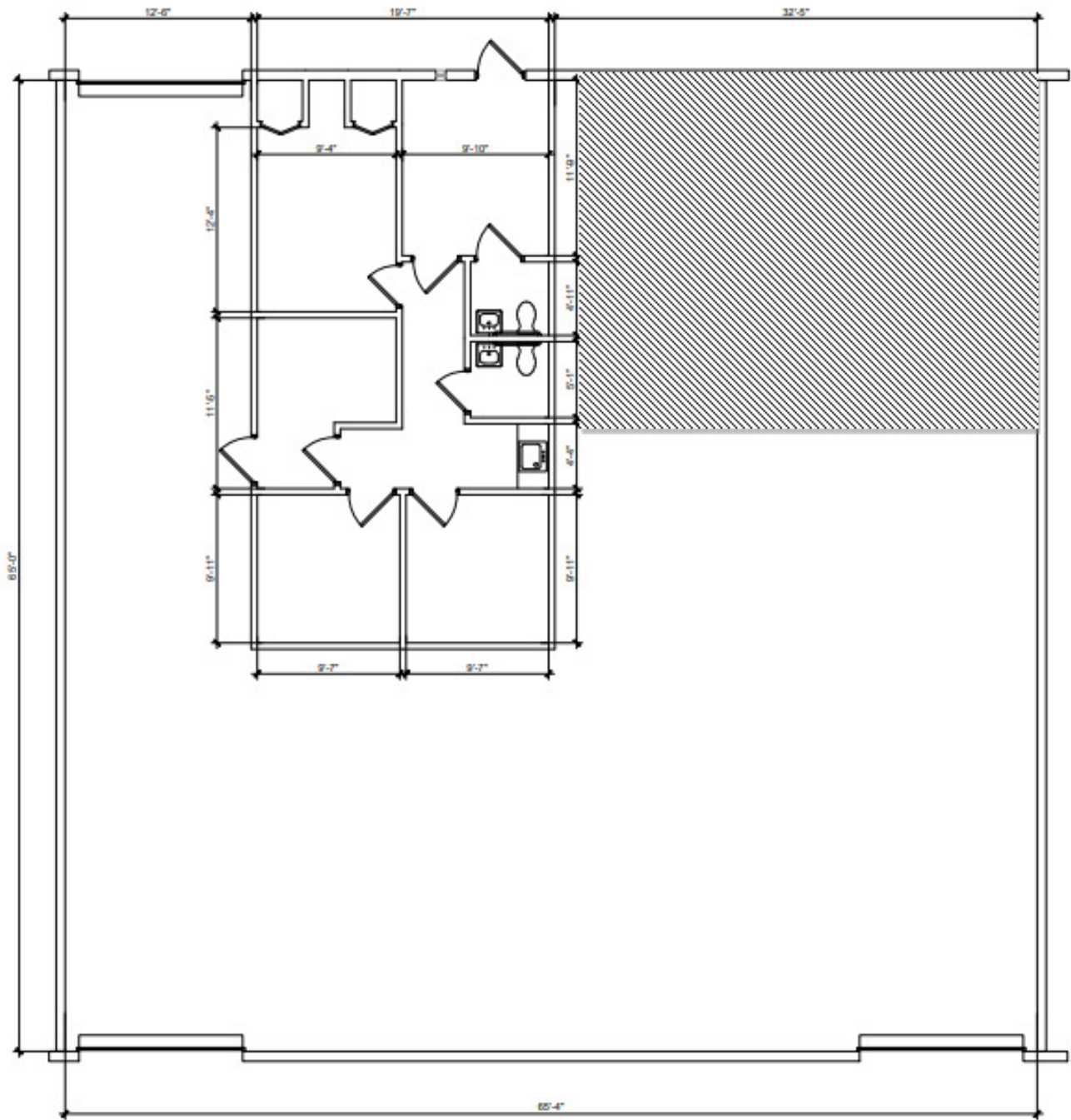
For more information:

Jonathan Thiel
954.652.2020 | Jthiel@Bergercommercial.Com
bergercommercial.com

Daniel Forman
954.652.2004 | Dforman@Bergercommercial.Com

Lawrence Oxenberg
954.652.2017 | Loxenberg@Bergercommercial.Com





For more information:

Jonathan Thiel

954.652.2020 | Jthiel@Bergercommercial.com

bergercommercial.com

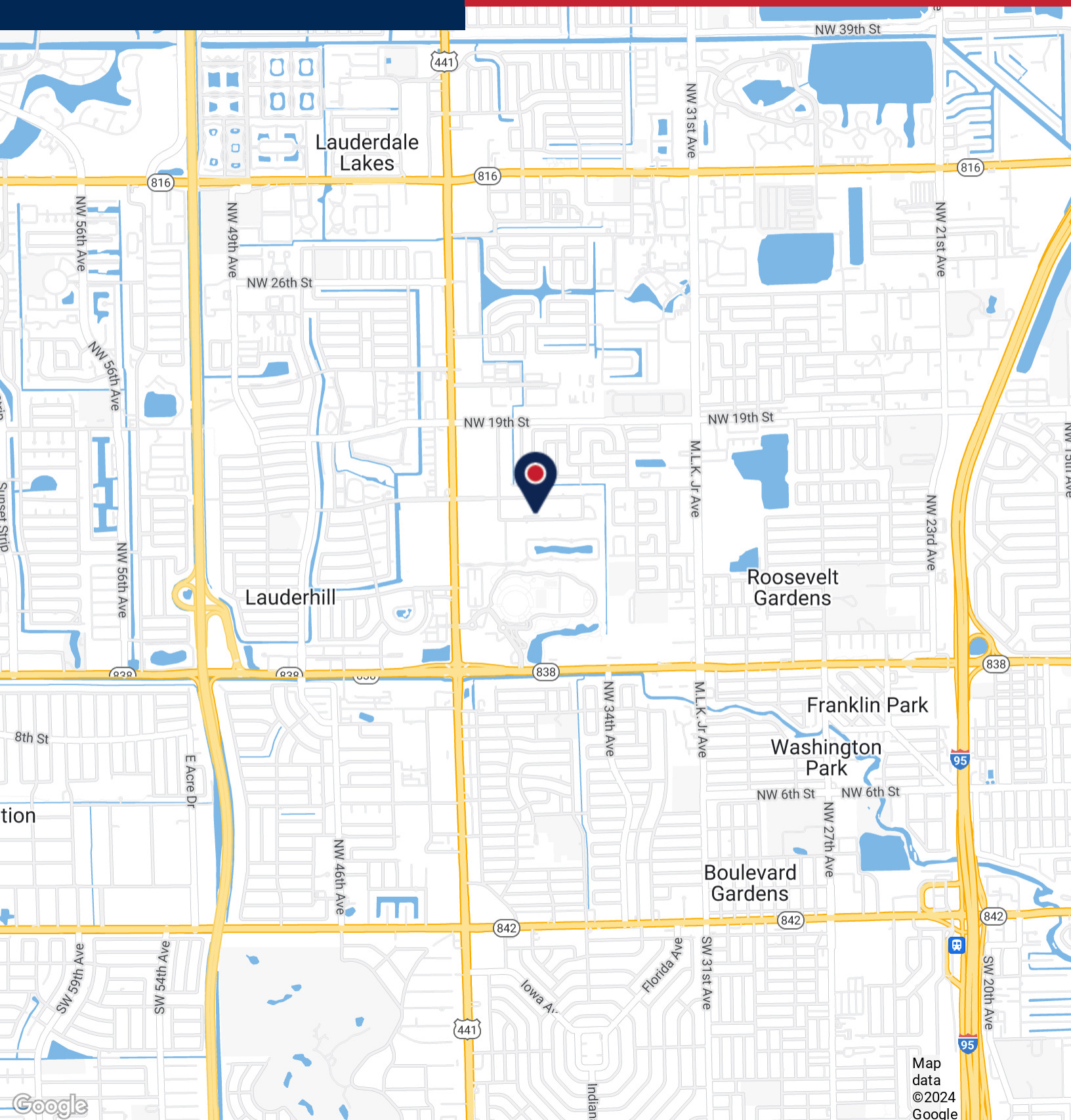
Daniel Forman

954.652.2004 | Dforman@Bergercommercial.com

Lawrence Oxenberg

954.652.2017 | Loxenberg@Bergercommercial.com





For more information:

Jonathan Thiel
954.652.2020 | Jthiel@Bergercommercial.com
bergercommercial.com

Daniel Forman
954.652.2004 | Dforman@Bergercommercial.com

Lawrence Oxenberg
954.652.2017 | Loxenberg@Bergercommercial.com



COMMERCIAL BROKERAGE AND PROPERTY MANAGEMENT