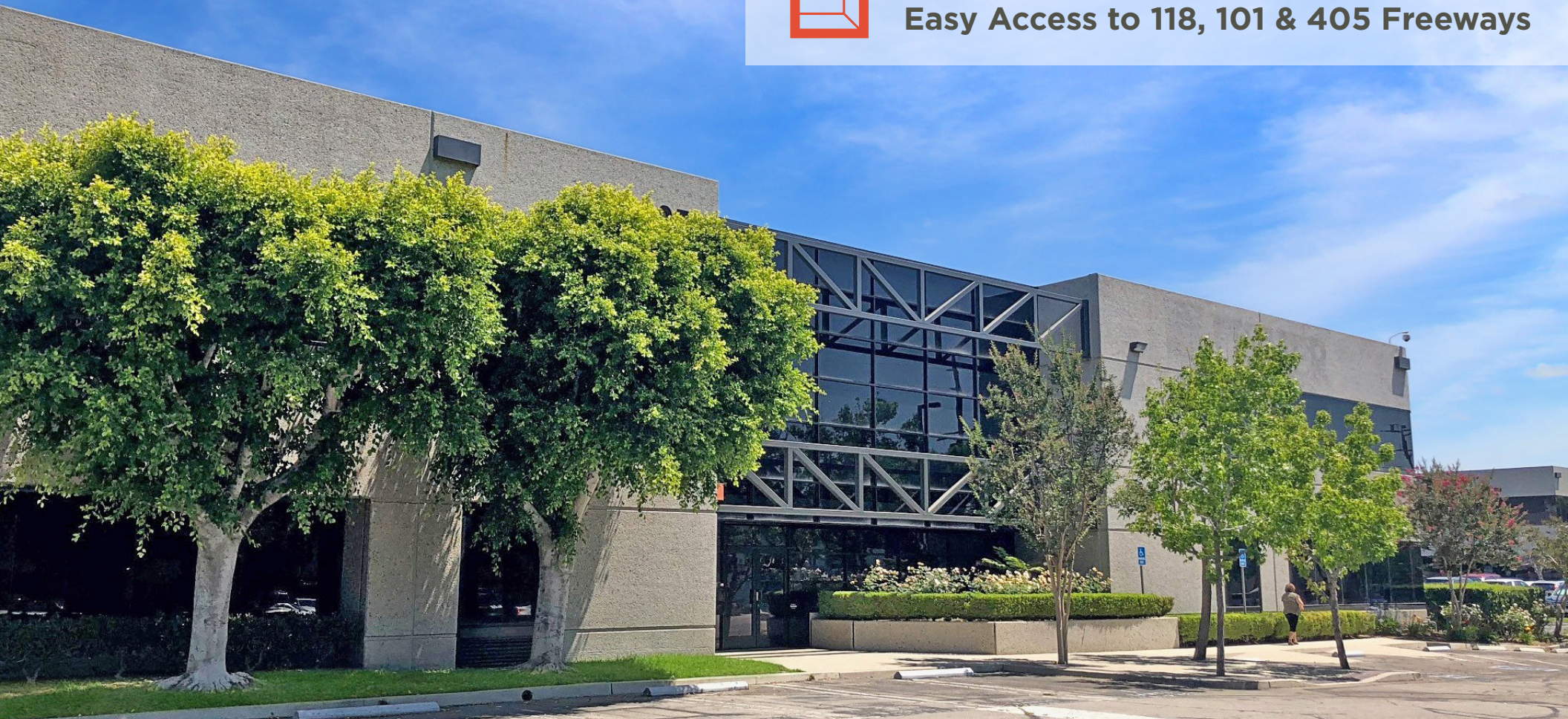




**Chatsworth Business Park /  
Easy Access to 118, 101 & 405 Freeways**



## **37,055 SF AVAILABLE FOR LEASE**

21605 Plummer Street, Unit 100 | Chatsworth, CA

### **FLEXIBLE INDUSTRIAL BUILDING**

Offering Features Suitable for Laboratory and/or Air Conditioned Warehouse Space



# Building Features

21605 PLUMMER ST



Industrial Gross  
Lease Rate  
**\$0.75 PSF**

\*Plus yearly property  
Insurance and property Taxes



Available SF  
**37,055 SF**  
31,491 SF Warehouse  
5,564 SF Office



Uses  
Ideal for Laboratory  
or Warehouse



HVAC Units  
**4**

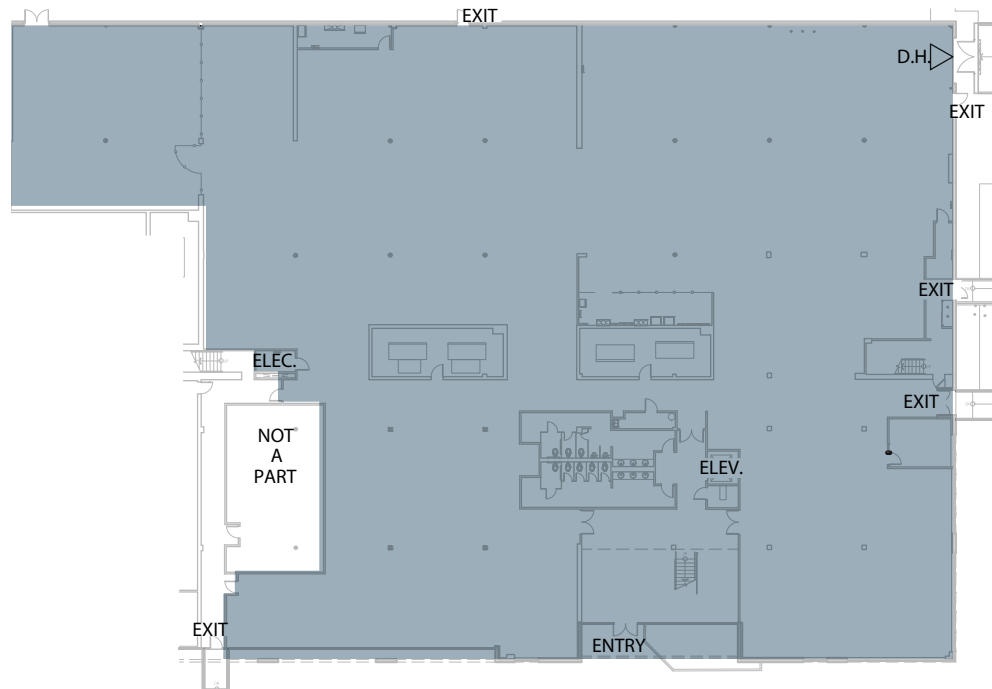


Zoning  
**MR2**

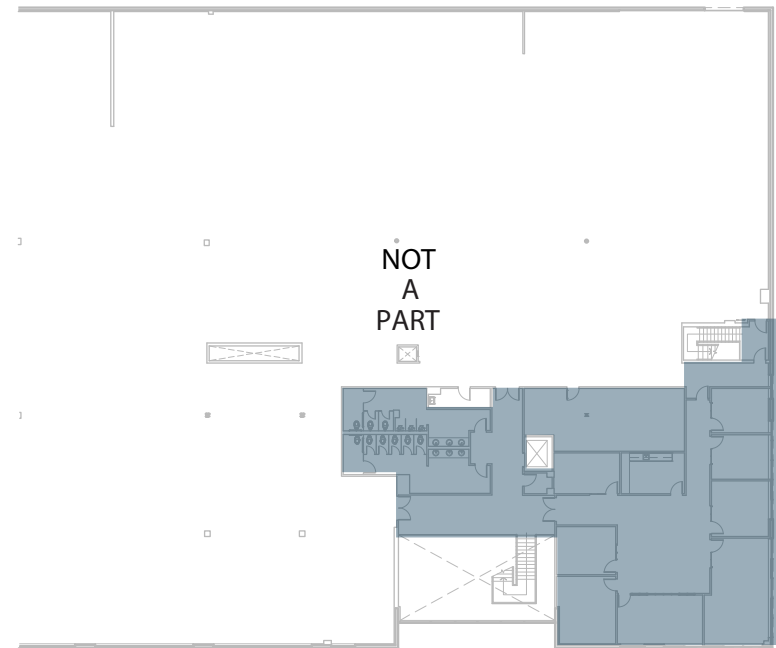


## PROPERTY HIGHLIGHTS

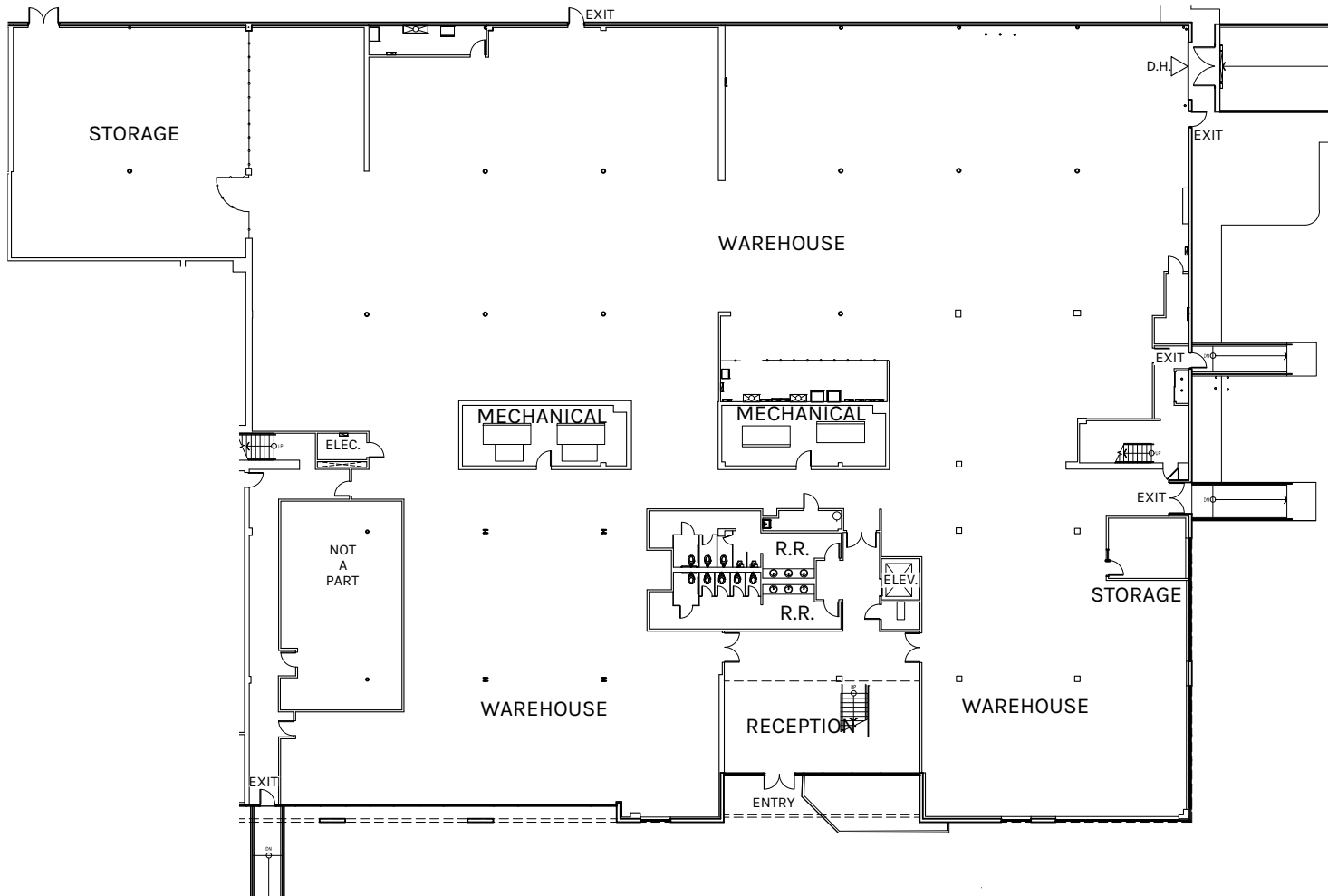
- 1,800 Amps of Power
- Power: 277/480V, 3Ph, 4W
- 1 Dock High Door
- 1 Ground Level Door
- 11' Clear Height 1st Floor
- Sprinklered
- 135 Parking Spaces



**FIRST FLOOR**  
**31,491 SF**

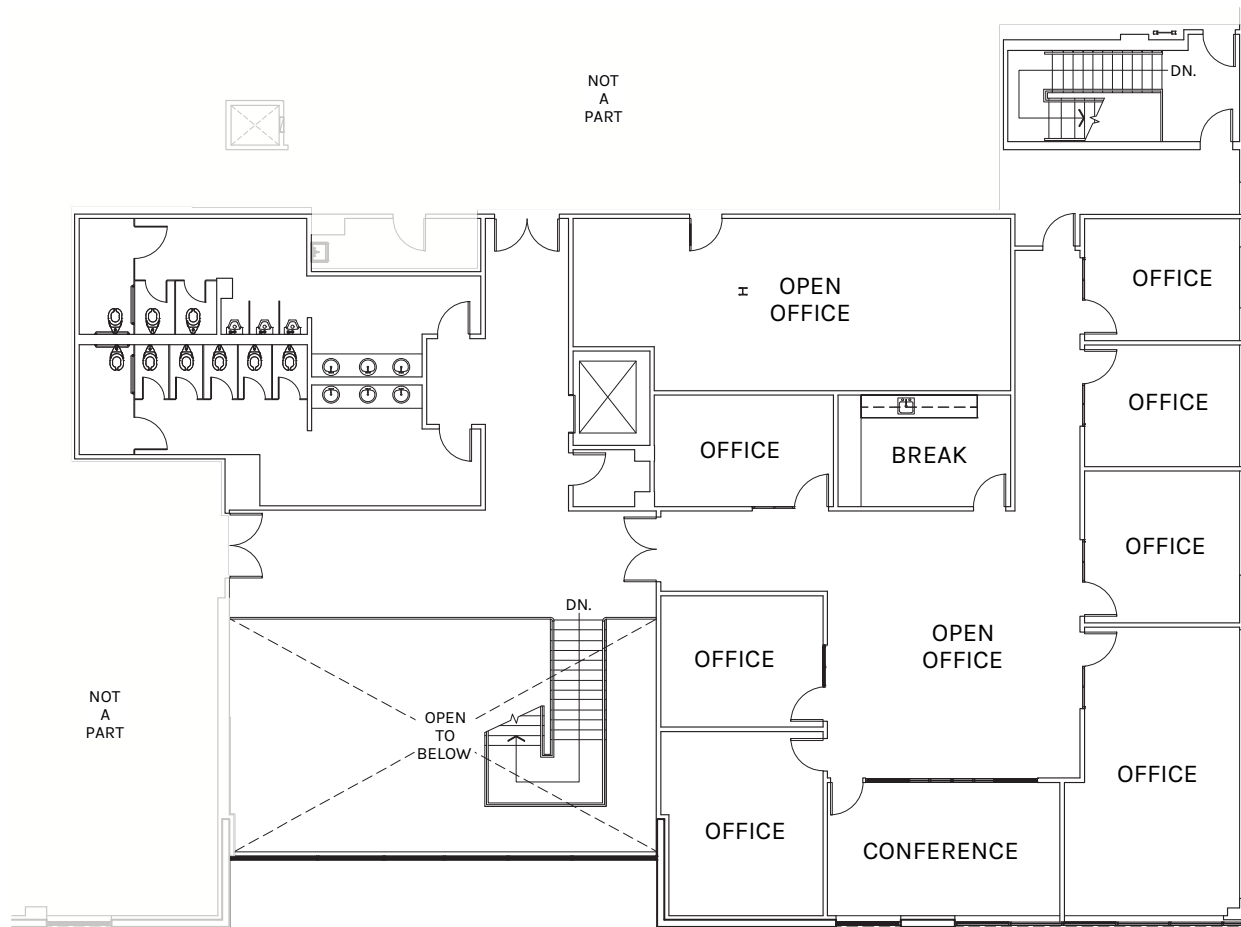


**SECOND FLOOR OFFICE**  
**5,564 SF**



**GROUND LEVEL PLAN**  
**31,491 SF**

PLAN LAYOUT SUBJECT TO FIELD CONDITIONS AND MAY DIFFER FROM PLAN AS SHOWN. ALL INFORMATION PRESENTED ON THIS DRAWING IS PRESUMED TO BE ACCURATE, HOWEVER TENANT SHOULD VERIFY PERTINENT INFORMATION PRIOR TO COMMITTING TO A LEASE. ANY FURNITURE OR APPLIANCES SHOWN ON PLAN ARE FOR CONCEPT ONLY AND WILL BE TENANT PROVIDED.



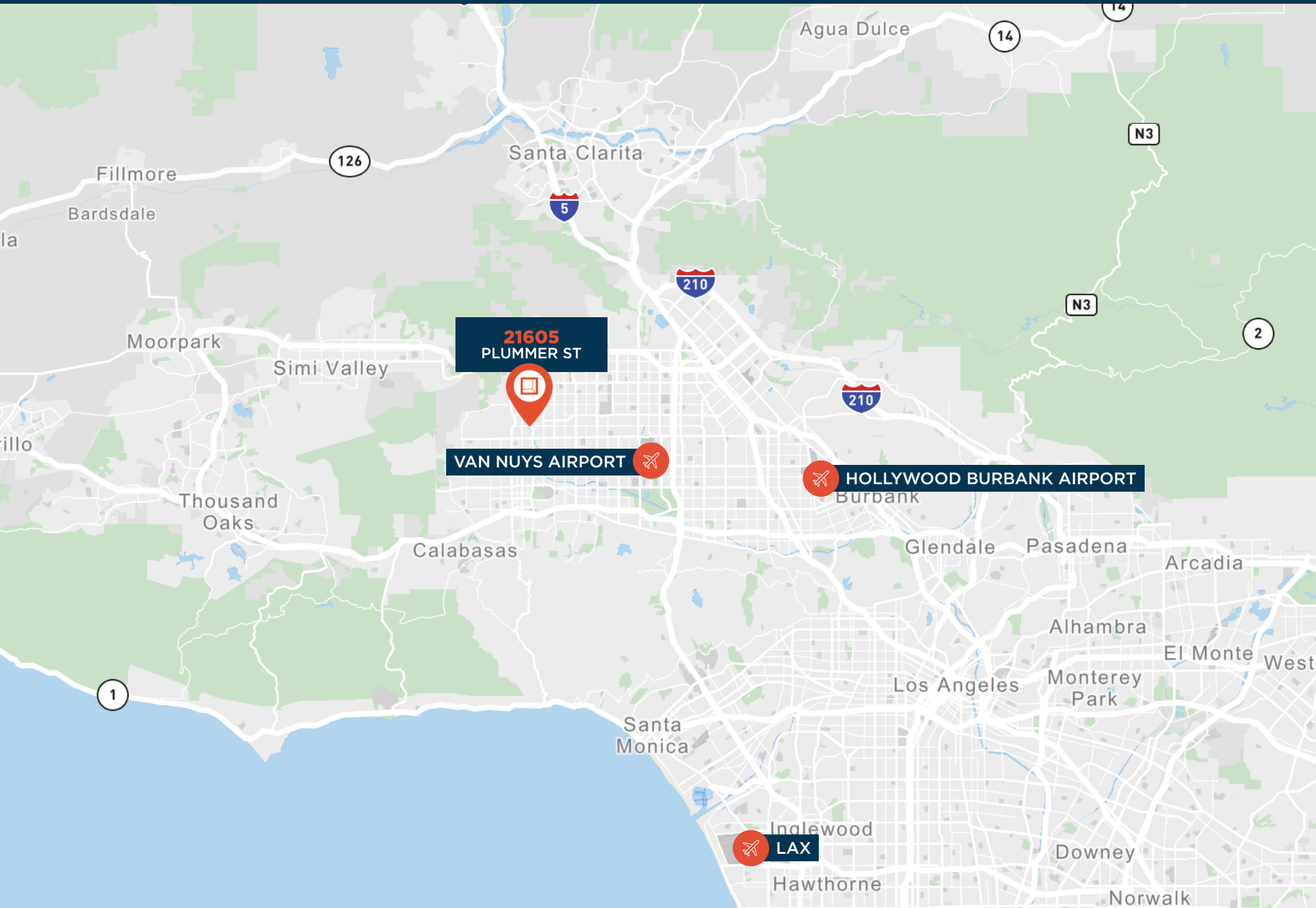
SECOND FLOOR  
OFFICE PLAN  
**5,564 SF**

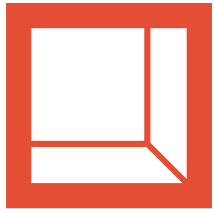
PLAN LAYOUT SUBJECT TO FIELD CONDITIONS AND MAY DIFFER FROM PLAN AS SHOWN. ALL INFORMATION PRESENTED ON THIS DRAWING IS PRESUMED TO BE ACCURATE, HOWEVER TENANT SHOULD VERIFY PERTINENT INFORMATION PRIOR TO COMMITTING TO A LEASE. ANY FURNITURE OR APPLIANCES SHOWN ON PLAN ARE FOR CONCEPT ONLY AND WILL BE TENANT PROVIDED.



# Property Location

21605 PLUMMER ST





**Rexford  
Industrial**

## Leasing Contacts:

### **Bennett Robinson**

Vice Chairman

+1 818 458 7853

[bennett.robinson@cbre.com](mailto:bennett.robinson@cbre.com)

Lic. 00984312

### **Matthew Heyn**

Vice Chairman

+1 818 334 1860

[matthew.heyne@colliers.com](mailto:matthew.heyne@colliers.com)

Lic. 0130618

© 2024 CBRE, Inc. All rights reserved. This information has been obtained from reliable sources but has not been verified for accuracy or completeness. CBRE, Inc. makes no guarantee, representation, or warranty and accepts no responsibility or liability for the accuracy, completeness, or reliability of the information contained herein. You should conduct a careful, independent investigation of the property and verify all information. Any reliance on this information is solely at your own risk. CBRE and the CBRE logo are service marks of CBRE, Inc. All other marks displayed on this document are the property of their respective owners, and the use of such marks does not imply any affiliation with or endorsement of CBRE. Photos herein are the property of their respective owners. Use of these images without the express written consent of the owner is prohibited.

**CBRE**