

Chaddock House

Chaddock Lane, Astley, Manchester, M29 7JS



OFFICE TO LET

375.00 sqft (34.84 sqm)

RENT

£750.00 Monthly

To View Contact:
Trish Zielinska
trish@toletwigan.co.uk
01942 734748
www.toletwigan.co.uk



Property Highlights

- First Floor Refurbished Office
- Open Plan Main Room
- Separate Private Office

Description

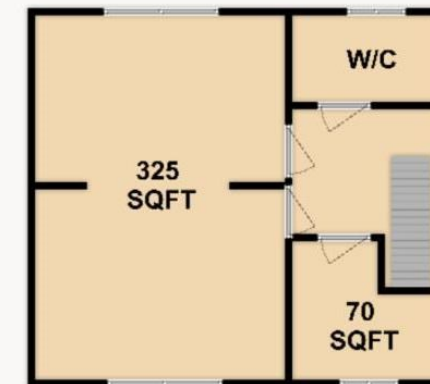
Refurbished 375 sq ft first-floor office with large main office, separate smaller office, kitchenette and WC, set within a smart professional building with gated parking and 24-hour access.

- Rent: £750 Per Month
- Size: Approx. 375 Sq Ft
- VAT: Plus VAT At 20%
- Business Rates: TBC (may qualify for Small Business Rates Relief)
- Parking: Large Gated Onsite Car Park
- Access: 24 Hour Access
- Availability: Available

Location

Prominently positioned on Chaddock Lane in Astley, set between Wigan, Leigh and Bolton, benefitting from a busy main road frontage, strong residential surroundings and excellent connectivity to nearby business parks and key road links.

Layout



FIRST FLOOR