

# VALLEY BUSINESS CENTER POMONA, CA



## INDUSTRIAL FOR LEASE



UNIT	SIZE	OFFICE	RATE
4108	4,560 SF	975 SF	\$1.39 psf, IG

### PROPERTY FEATURES

- Walnut Mailing Address – 91789 Zipcode
- Valley Business Center
- Private, Fenced Yard
- Ground Level Loading Doors
- 16 Foot Ceiling Clear height
- Access to (60), (57), (10), and (71) Freeways
- Professionally Managed By Rexford Industrial



### FOR FURTHER INFORMATION, PLEASE CONTACT:

**CHRIS TOLLES**  
(213) 955-5129  
[Chris.tolles@cushwake.com](mailto:Chris.tolles@cushwake.com)  
Lic. #01459899

**MAYA SCHIRN**  
(213) 236-4931  
[Maya.schirn@cushwake.com](mailto:Maya.schirn@cushwake.com)  
Lic. #02237054

**ERIK J. LARSON**  
(213) 955-5126  
[Erik.larson@cushwake.com](mailto:Erik.larson@cushwake.com)  
Lic. #01213790

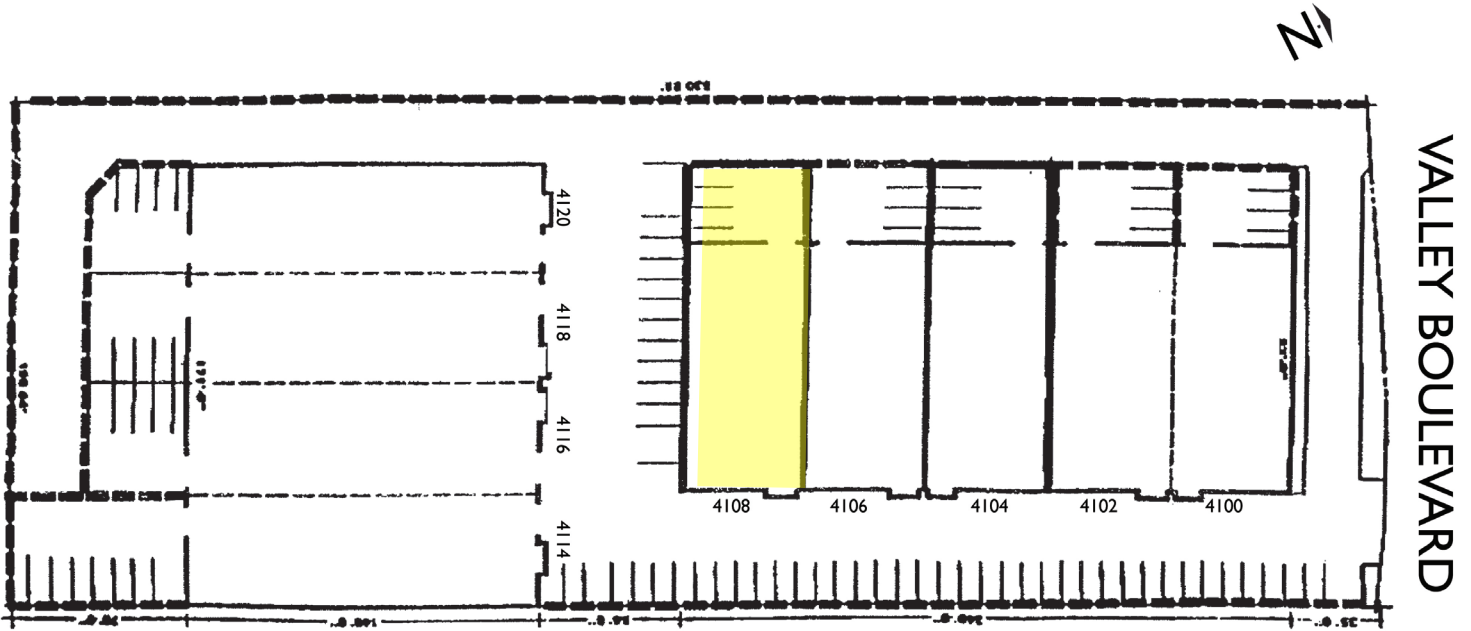
CUSHMAN & WAKEFIELD, OF CALIFORNIA, INC.  
Lic. #00616335  
900 Wilshire Blvd, Ste. 2400, Los Angeles, CA 90017  
[www.cushmanwakefield.com](http://www.cushmanwakefield.com)

# VALLEY BUSINESS CENTER

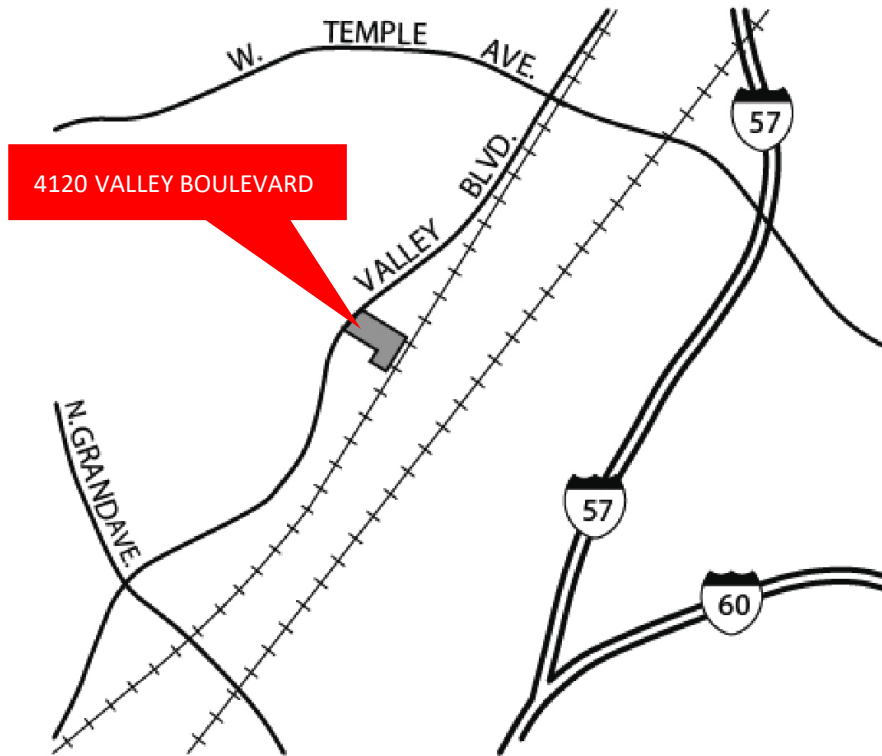
Pomona, CA

INDUSTRIAL  
FOR LEASE

## SITE PLAN



## VICINITY MAP



## FOR FURTHER INFORMATION, PLEASE CONTACT:

CHRIS TOLLES  
(213) 955-5129  
[Chris.tolles@cushwake.com](mailto:Chris.tolles@cushwake.com)  
Lic. #01459899

MAYA SCHIRN  
(213) 236-4931  
[Maya.schirn@cushwake.com](mailto:Maya.schirn@cushwake.com)  
Lic. #02237054

ERIK J. LARSON  
(213) 955-5126  
[Erik.larson@cushwake.com](mailto:Erik.larson@cushwake.com)  
Lic. #01213790

CUSHMAN & WAKEFIELD, OF CALIFORNIA, INC.  
Lic. #00616335  
900 Wilshire Blvd, Ste. 2400, Los Angeles, CA 90017  
[www.cushmanwakefield.com](http://www.cushmanwakefield.com)

The depiction in the included photograph of any person, entity, sign, logo or property, other than Cushman & Wakefield's (C&W) client and the property offered by C&W, is incidental only, and is not intended to connote any affiliation, connection, association, sponsorship or approval by or between that which is incidentally depicted and C&W or its client. This listing shall not be deemed an offer to lease, sublease or sell such property; and, in the event of any transaction for such property, no commission shall be earned by or payable to any cooperating broker except if otherwise provided pursuant to the express terms, rates and conditions of C&W's agreement with its principal, if, as and when such commission (if any) is actually received from such principal. (A copy of the rates and conditions referred to above with respect to this property is available upon request.)