



FOR LEASE INQUIRES CALL

JIM LAING

SENIOR DIRECTOR

+1 619 525 2909

[jim.laing@cushwake.com](mailto:jim.laing@cushwake.com)



# WILLOW CREEK PLAZA

---

9820 WILLOW CREEK ROAD, SAN DIEGO, CA 92131

*Scripps Ranch Class A Office Building*

# BUILDING HIGHLIGHTS

## WILLOW CREEK PLAZA



OUTDOOR SEATING AND TRAILS



OPEN AIR GREEN LOBBY



RETAIL & FOOD  
SERVICES  
ADJACENT TO SITE



BALCONY



SHOWERS



NEUTRAL  
LIGHTING



PARKS  
& RUNNING TRAILS NEARBY

Willow Creek Plaza is a 79,000 SF, 4-story Class A office building located immediately off the I-15 freeway on the Carrol Canyon Rd exit. The atrium style building features a serene setting in the Scripps Ranch Business Park complete with private balconies, tropical garden courtyard, showers and gym facilities. The property is within walking distance to the area's numerous local eateries, shops as well as running trails and parks.

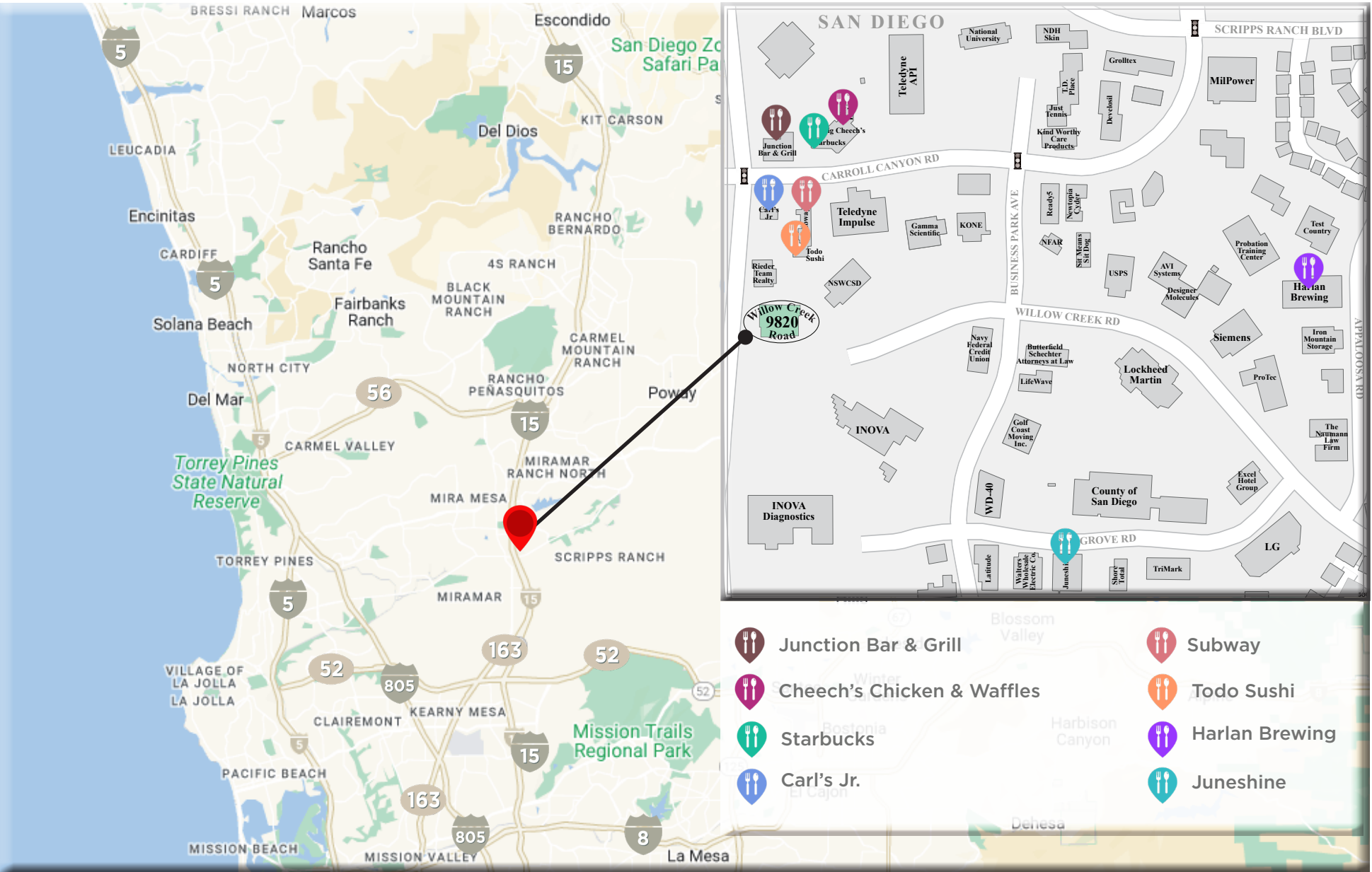


- Class A Suburban Office
- 4-Stories
- Garden Atrium
- Elevator Served
- Showers & Gym Facilities
- 4 Stalls per 1,000 SF Parking Ratio
- On-Site Ownership and Management

# MAP & AMENITIES



Willow Creek Plaza is centrally located in San Diego County along the I-15 Corridor in the Scripps Ranch Business Park. The park features an abundance of local eateries, breweries, salons and other retailers.



# OFFICE SUITE AVAILABILITY



ENTRANCE



9820 WILLOW CREEK RD



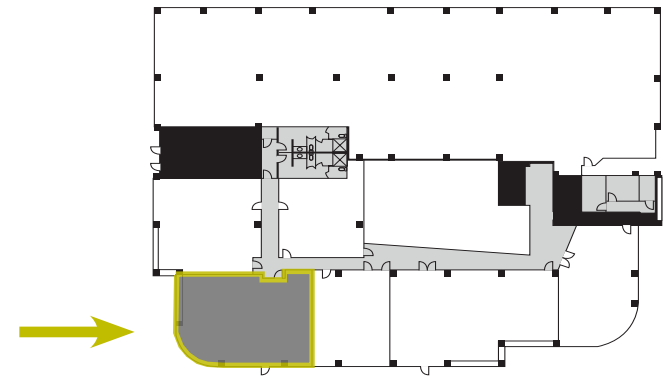
INDOOR ATRIUM

SUITE	SF	RATE / SF / MONTH	FLOOR PLAN LINK
105	2,441 SF	\$2.85 / SF / MONTH + ELECTRIC	<a href="#">View Suite 105</a>
110	1,459 SF	\$2.85 / SF / MONTH + ELECTRIC	<a href="#">View Suite 110</a>
120	2,013 SF	\$2.85 / SF / MONTH + ELECTRIC	<a href="#">View Suite 120</a>
260	704 SF	\$2.85 / SF / MONTH + ELECTRIC	<a href="#">View Suite 260</a>
350	3,769 SF / 12,006 SF	\$2.85 / SF / MONTH + ELECTRIC	<a href="#">View Suite 350</a>
380	8,236 SF / 12,006 SF	\$2.85 / SF / MONTH + ELECTRIC	<a href="#">View Suite 380</a>
445	817 SF	\$2.85 / SF / MONTH + ELECTRIC	<a href="#">View Suite 445</a>
455	1,713 SF	\$2.85 / SF / MONTH + ELECTRIC	<a href="#">View Suite 455</a>
470	880 SF	\$2.85 / SF / MONTH + ELECTRIC	<a href="#">View Suite 470</a>

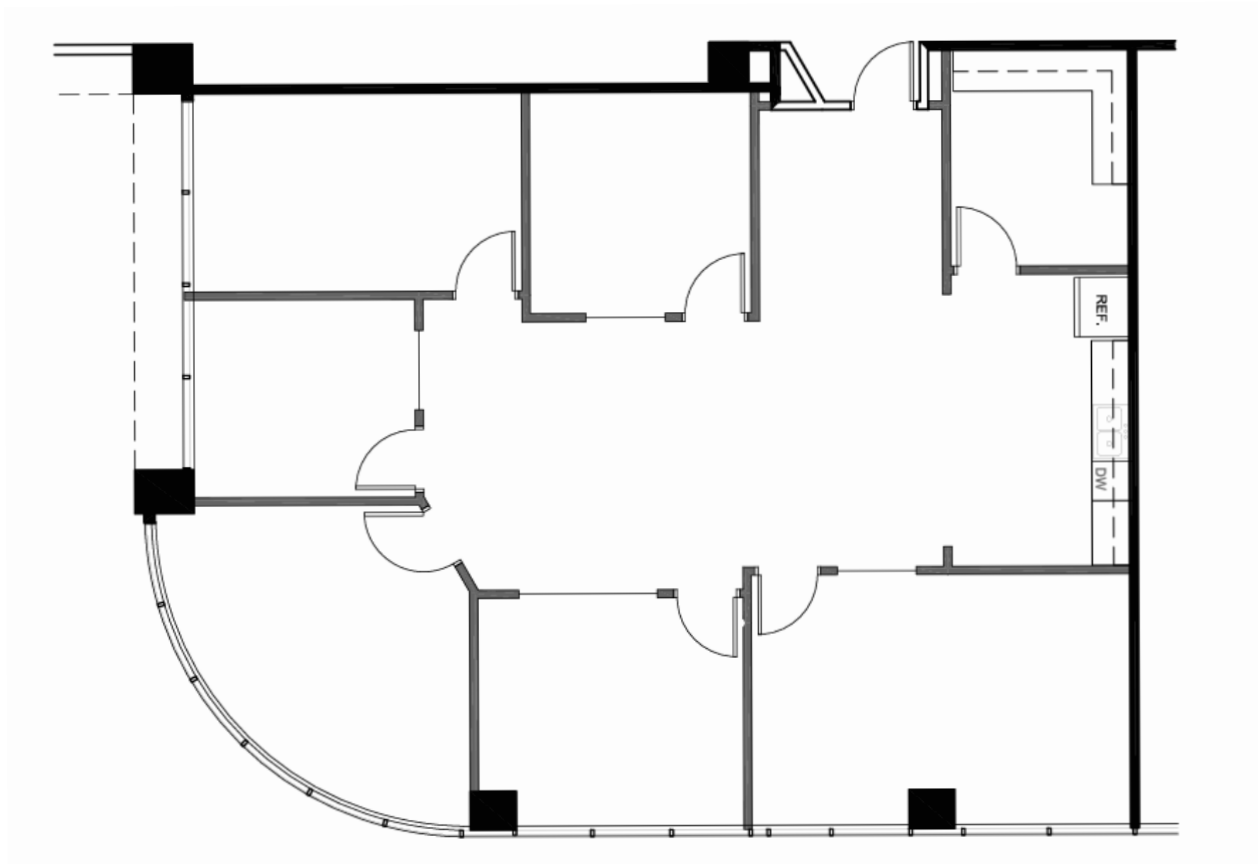
# FLOOR PLAN

**SUITE 105** | **2,441 SF**

- Reception Area
- Conference Room
- 5 Offices
- IT/File Room
- Kitchen
- Open Area



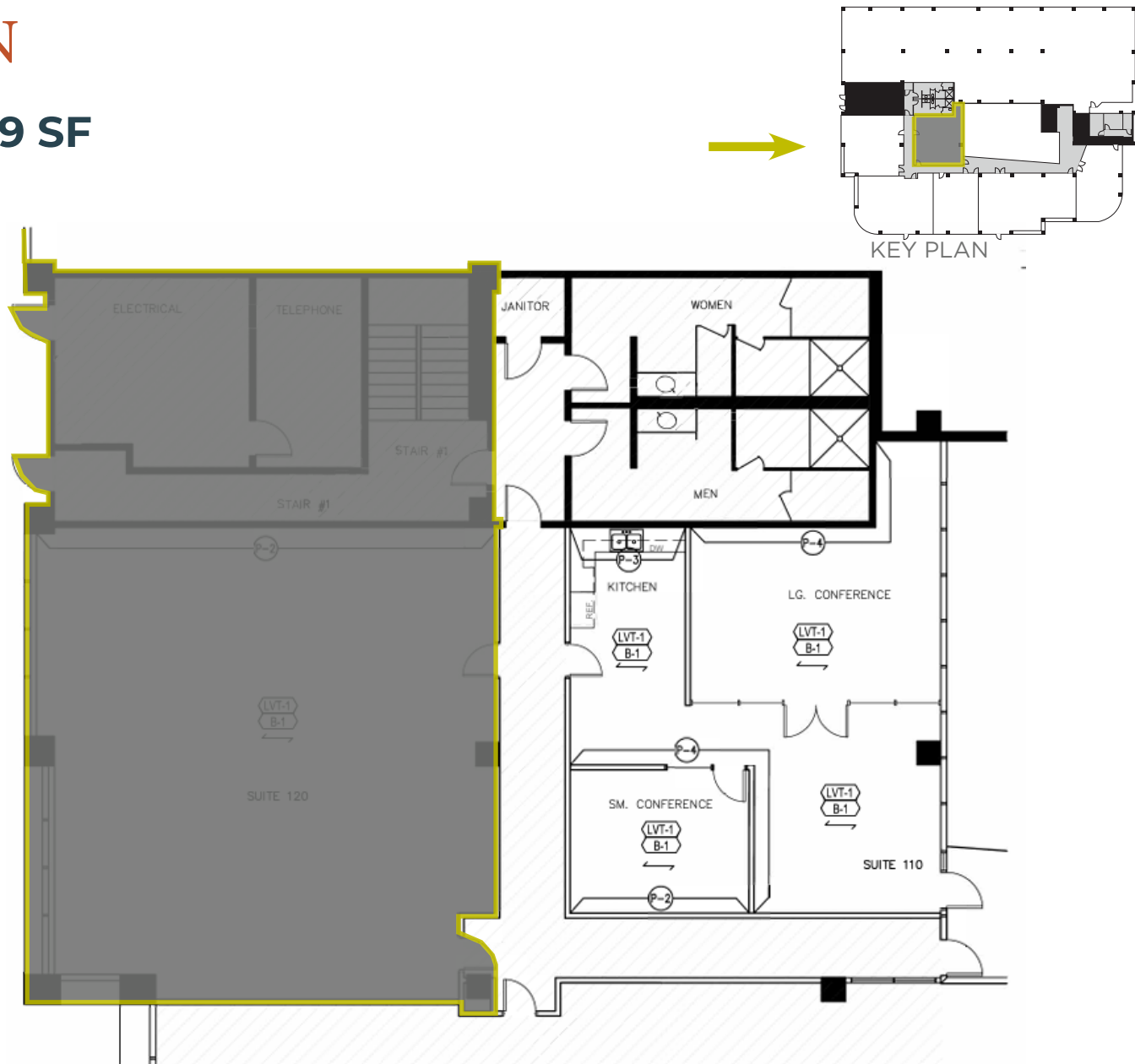
KEY PLAN



# FLOOR PLAN

**SUITE 110** | **1,459 SF**

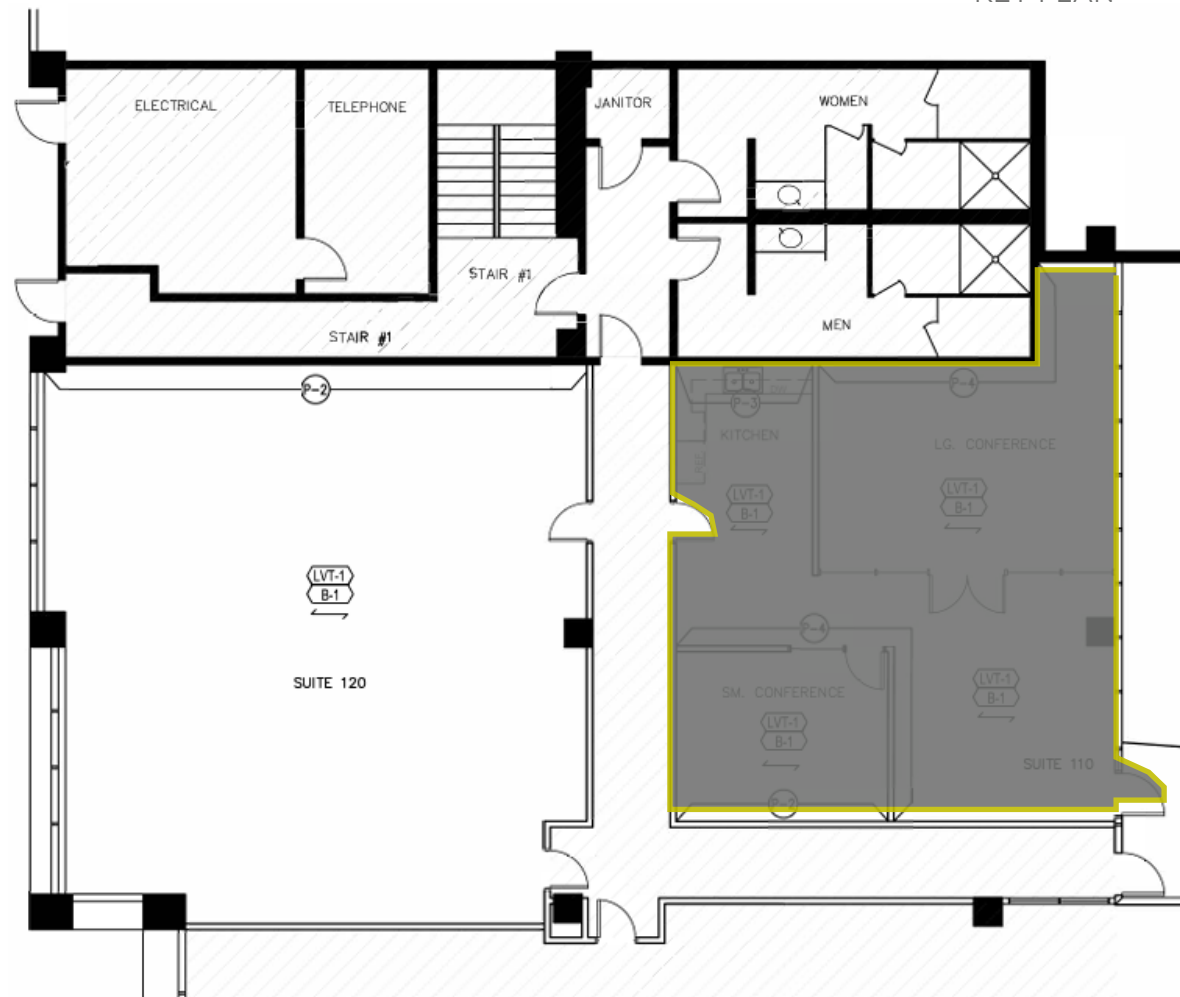
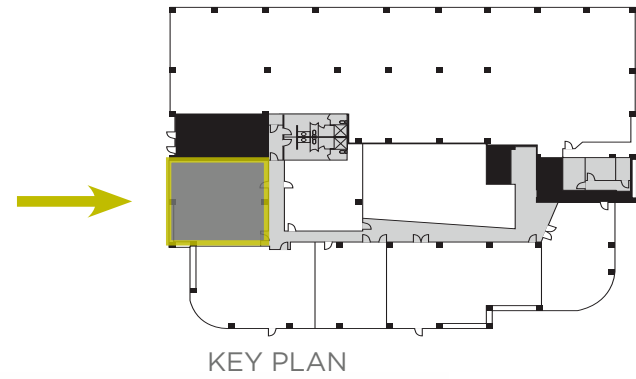
- Reception Area
- Conference Room
- Office or 2nd Conference Room
- Kitchen



# FLOOR PLAN

**SUITE 120** | **2,013 SF**

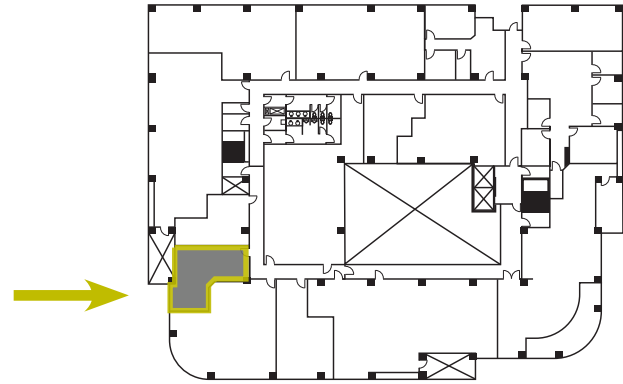
- Improved Collaborative Open Area



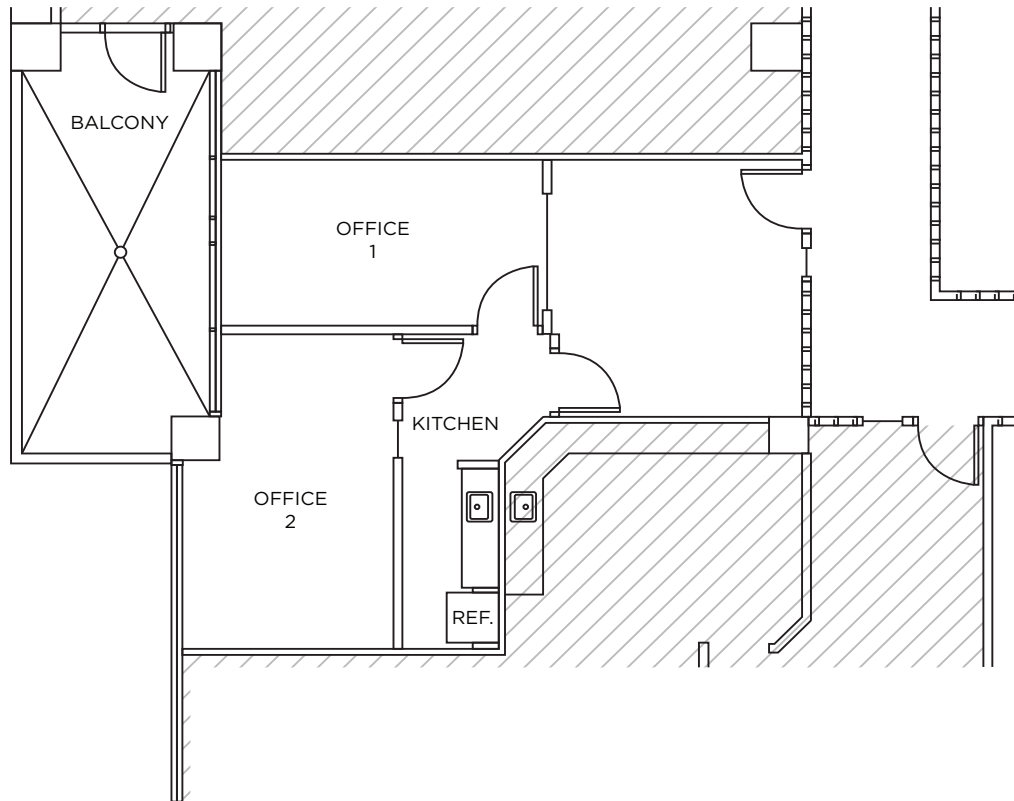
# FLOOR PLAN

**SUITE 260 | 704 SF**

- Reception Area
- Office
- Conference Room or 2nd Office
- Kitchen



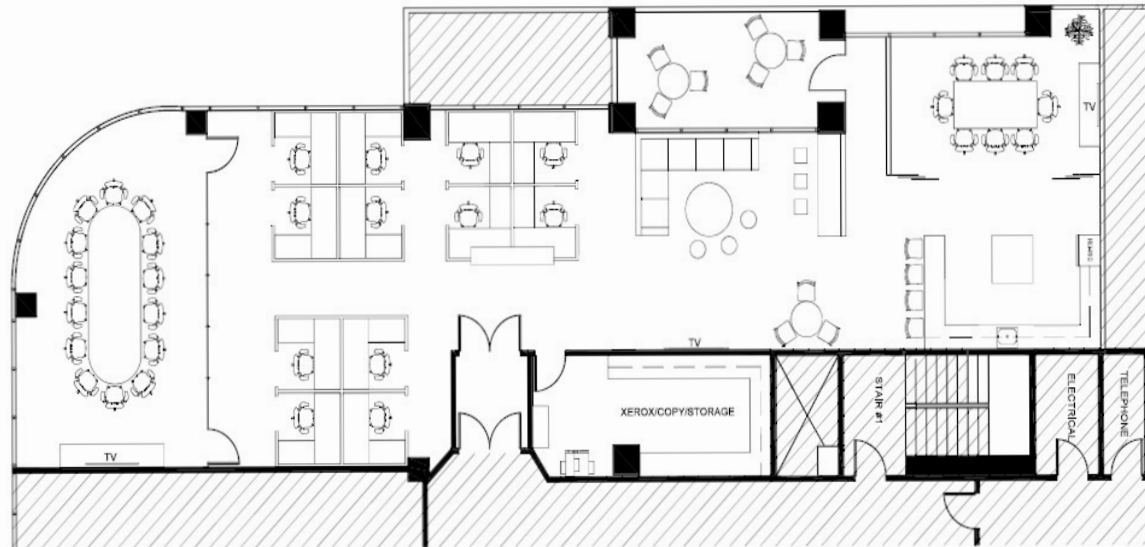
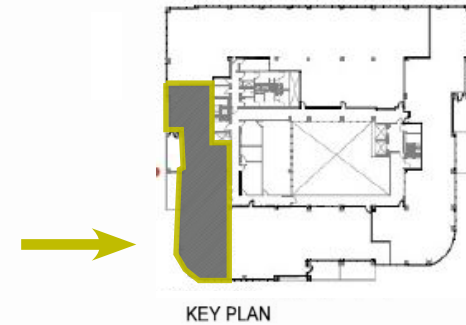
KEY PLAN



# FLOOR PLAN

**SUITE 350** | **3,769 SF**

- Shell Condition
- Build To Suit Opportunity
- Double Door Entry
- Great Natural Light w/ Park Views
- Newly Renovated Corridors & Restrooms
- Private Deck



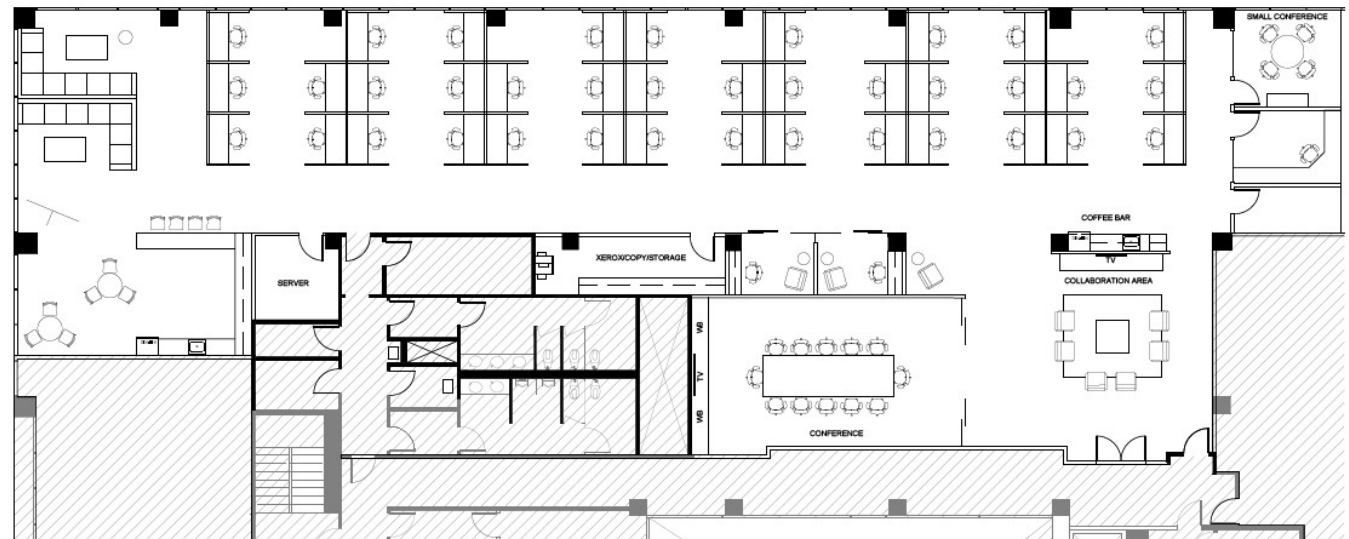
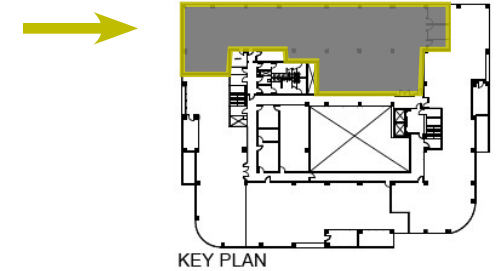
HYPOTHETICAL  
SPACE PLANS

Suites 350 & 380 can be combined to 12,006 SF

# FLOOR PLAN

## SUITE 380

- Shell Condition
- Build To Suit Opportunity
- Entry Off Elevator Lobby
- Newly Renovated Corridors & Restrooms



## HYPOTHETICAL SPACE PLANS

Suites 350 & 380 can be combined to 12,006 SF

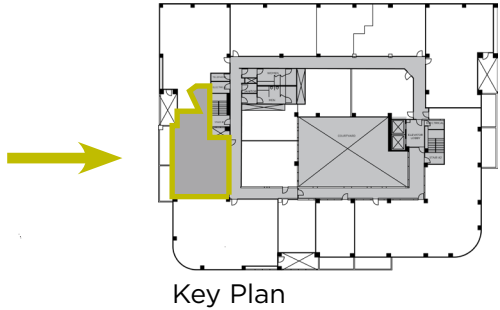
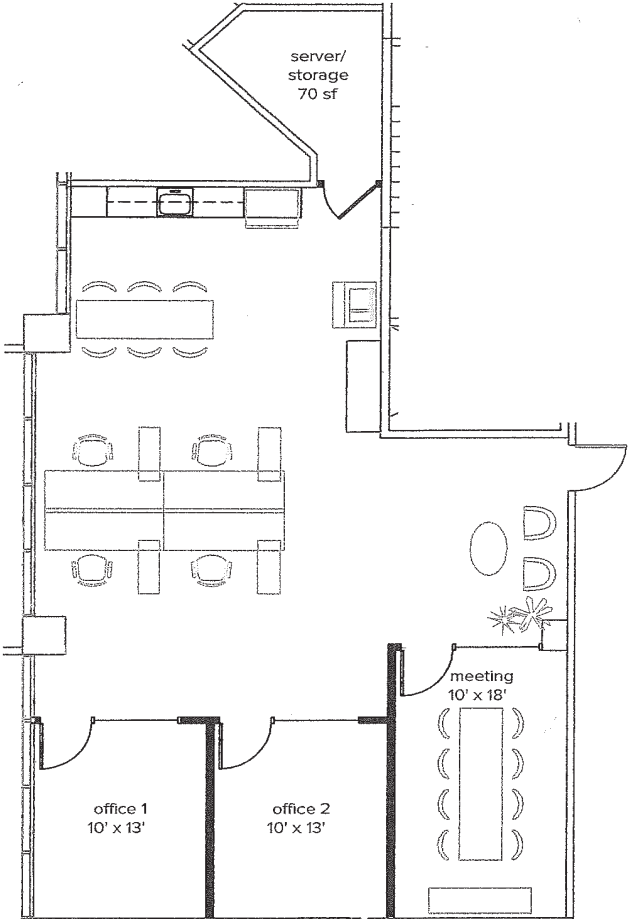
# FLOOR PLAN

## SUITE 455 | 1,713 SF +/-

- Reception
- Conference Room
- 2 Private Offices
- Open Work Area
- Open Kitchenette / Break Area

### HYPOTHETICAL SPACE PLAN

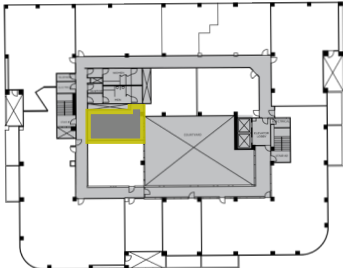
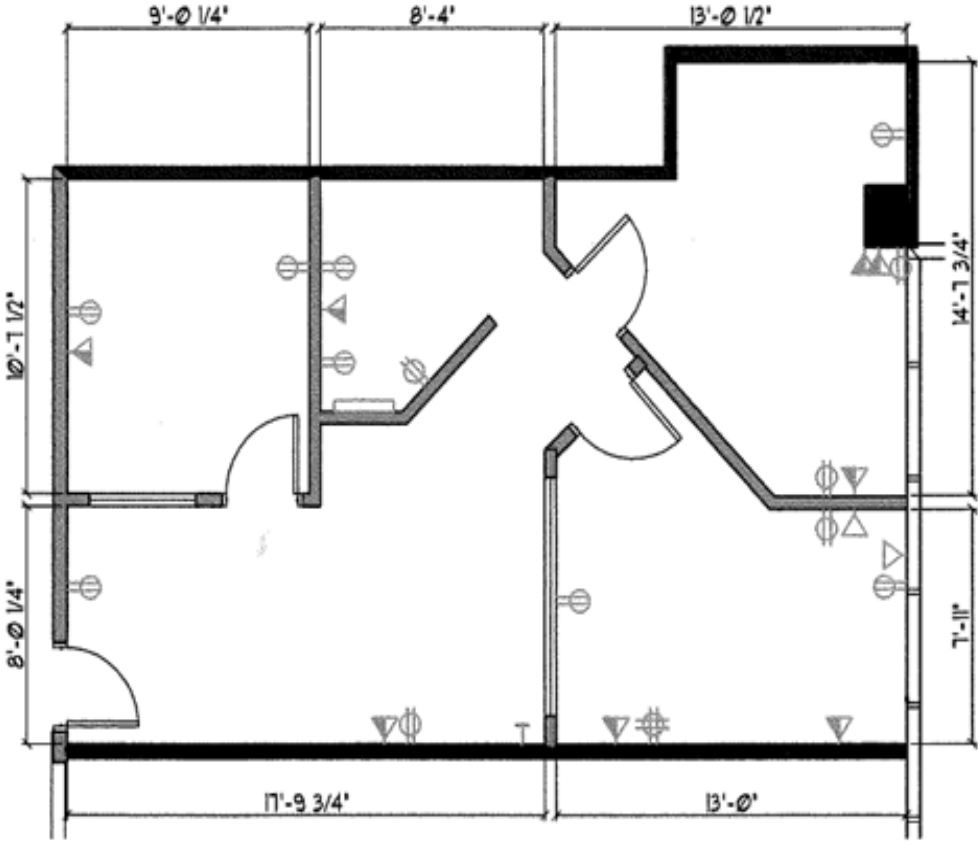
(Size subject to Final Measurements)



# FLOOR PLAN

## SUITE 445 | 817 SF

- Reception
- Conference Room
- 2 Offices
- File / Copy Room

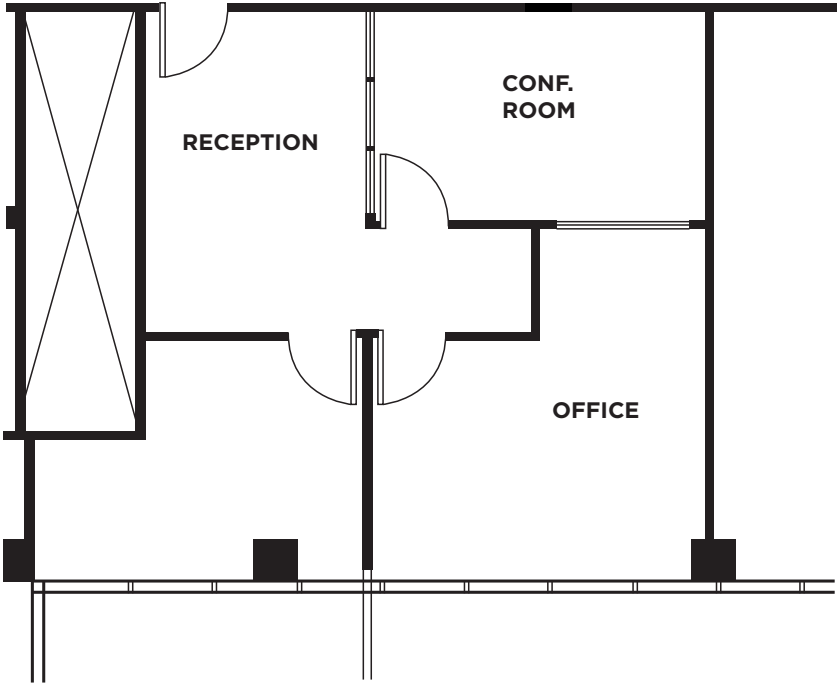
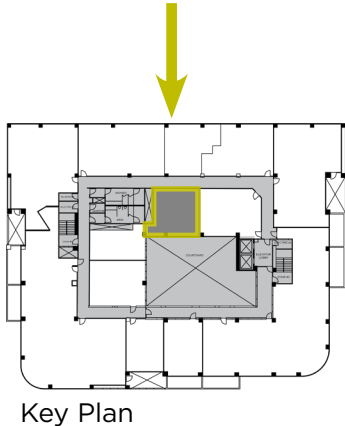


Key Plan

# FLOOR PLAN

**SUITE 470** | **880 SF**

- Reception
- Conference Room
- 2 Offices





## CONTACT BROKER

**JIM LAING**

SENIOR DIRECTOR

Lic. 857513

Direct +1 619 525 2909

[jim.laing@cushwake.com](mailto:jim.laing@cushwake.com)

[cushmanwakefield.com](http://cushmanwakefield.com)

Developed, Owned and Managed By  
The Currie Partners

[www.curriepartners.com](http://www.curriepartners.com)

**Matt Currie**

Direct + 1 858 271 7050

[matt@curriepartners.com](mailto:matt@curriepartners.com)