



THOMAS PARK
COMMERCIAL

AVAILABLE COMMERCIAL SUITE



8 Sudbrook Lane
Pikesville, MD 21208



\$850 /MONTH
INCLUDING UTILITIES



PLUMBING AVAILABLE

Easily attach a sink – ideal for a hairdresser or beauty professional.



GREAT FOR OFFICE SPACE

Perfect layout for a small office, studio or professional use.



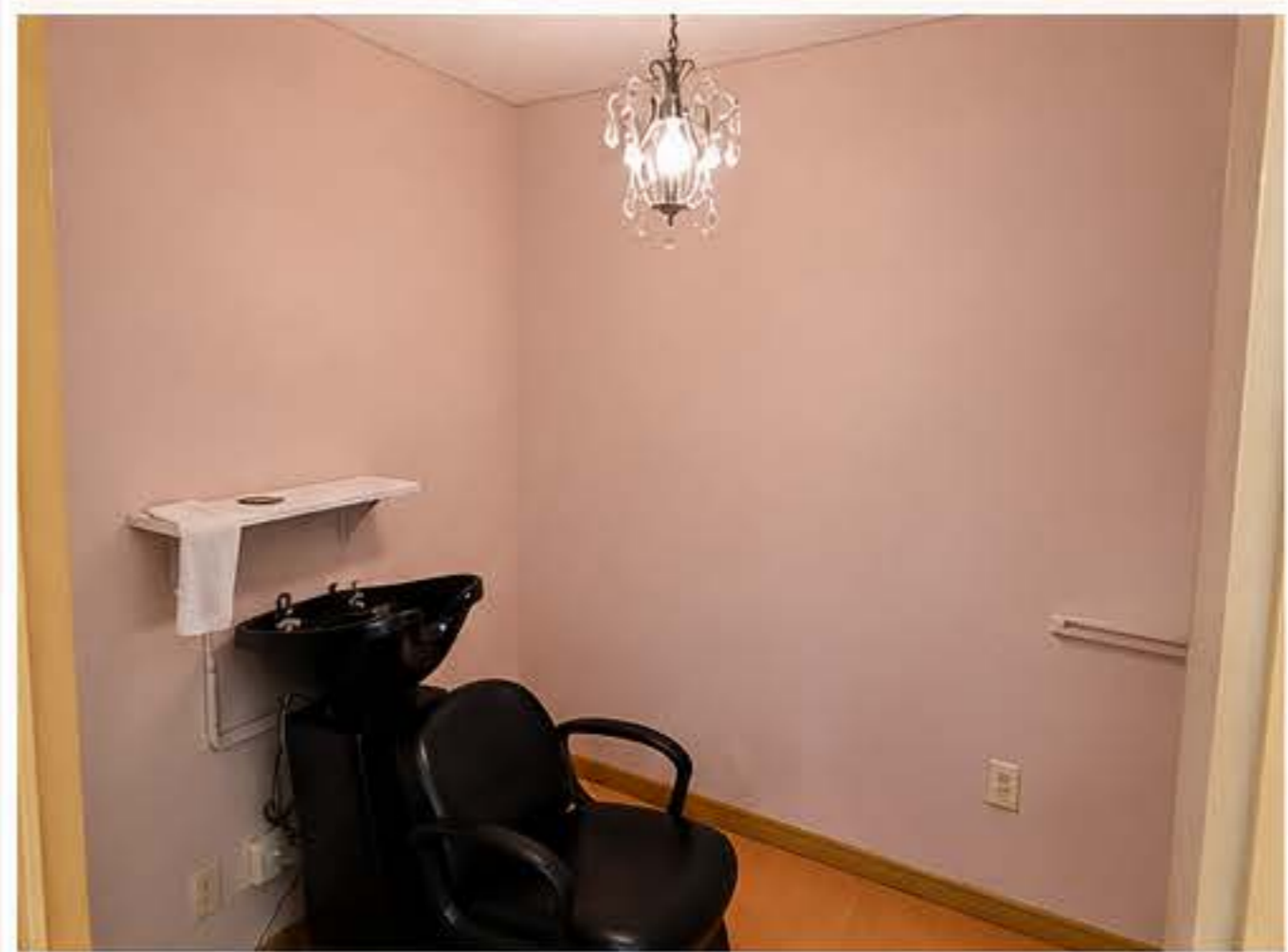
PRIVATE ENTRANCE

Direct, private access for you and your clients.



EASY PARKING

Convenient, on-site parking for you and your guests.



JONATHAN BARON

COMMERCIAL REAL ESTATE BROKER

443-418-7332

jonathan.baron@thomas-park.com

www.thomas-park.com



LOCAL EXPERTISE.
STRATEGIC RESULTS.

THOMAS PARK COMMERCIAL