

**MOVE-IN SPECIAL  
FIRST 2 MONTHS FREE!**  
\*AS-IS LAYOUTS AND TERMS 3 YEARS OR MORE.

**2290  
N FIRST ST**  
SAN JOSE, CA



**OFFICE FOR LEASE**  
**8 Total Configurations ±1,558 SF - 6,036 SF**

**NEWMARK**

**Gabe Regalado**  
408.455.4913  
gabe.regalado@nrmk.com  
CA RE LIC. #02008286

**Luke Allard**  
408.476.6517  
luke.allard@nrmk.com  
CA RE LIC. #01910058



**Roger Fields**  
650.207.1610  
Peninsula Land  
and Capital

# MARKET READY STANDARD SUITE



2290  
N FIRST ST



NEWMARK



2290 N FIRST STREET, SAN JOSE | 2

# CURRENT AVAILABILITY

**Suite 102B** ±1,558 SF

**Suite 102C** ±1,826 SF

**Suite 203** ±2,039 SF

**Suite 204** ±2,099 SF

Can be combined  
to ±4,138 SF

**Suite 205** ±2,340 SF

**Suite 208** ±3,696 SF

Can be combined  
to ±6,036 SF



2290  
N FIRST ST





# PROPERTY HIGHLIGHTS



Prominent Corner  
Location in North  
San Jose



Abundant  
Amenities within  
Walking Distance



±3.8/1,000  
Parking



Immediate Access to  
Highways 101, 87 &  
San Jose Airport



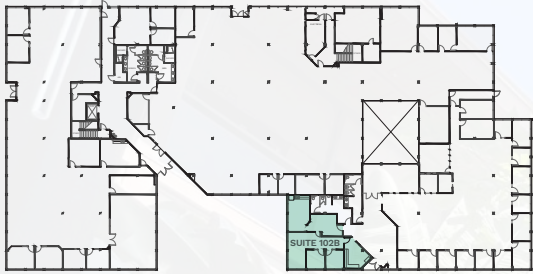
VTA Light Rail Station  
Immediately in Front of  
the Building



AT&T Fiber Lit  
Sean Mendez  
sm503w@att.com | 925.487.2127  
Comcast Fiber Lit  
Scott Yee  
Scott\_Yee@comcast.com | 925.967.1260

# FLOOR PLAN 1ST FLOOR

## SUITE 102B: ±1,558 SF (CURRENT LAYOUT)



### FEATURES

- 2 PRIVATE OFFICES
- 1 CONFERENCE ROOM
- 1 HUDDLE ROOM
- OPEN OFFICE
- ATRIUM VIEW
- AMPLE WINDOW LINE
- PRIVATE RESTROOMS
- 250 AMPS POWER
- HYPOTHETICAL LAYOUT



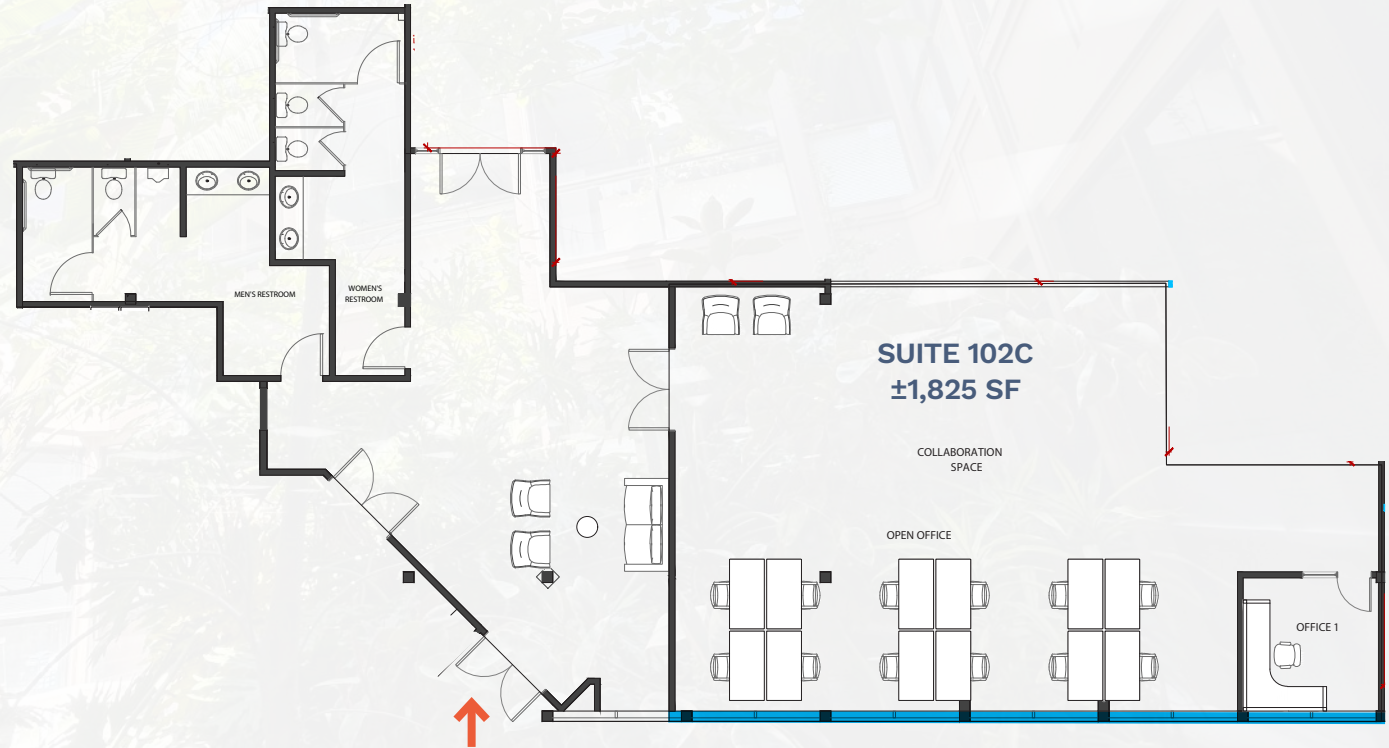
# FLOOR PLAN 1ST FLOOR

## SUITE 102C: ±1,825 SF (CURRENT LAYOUT)



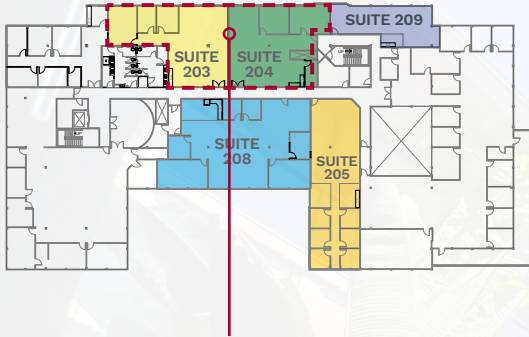
### FEATURES

- 1 PRIVATE OFFICE
- OPEN OFFICE
- ATRIUM VIEW
- AMPLE WINDOW LINE
- PRIVATE RESTROOMS
- 250 AMPS POWER
- HYPOTHETICAL LAYOUT



# FLOOR PLAN 2ND FLOOR

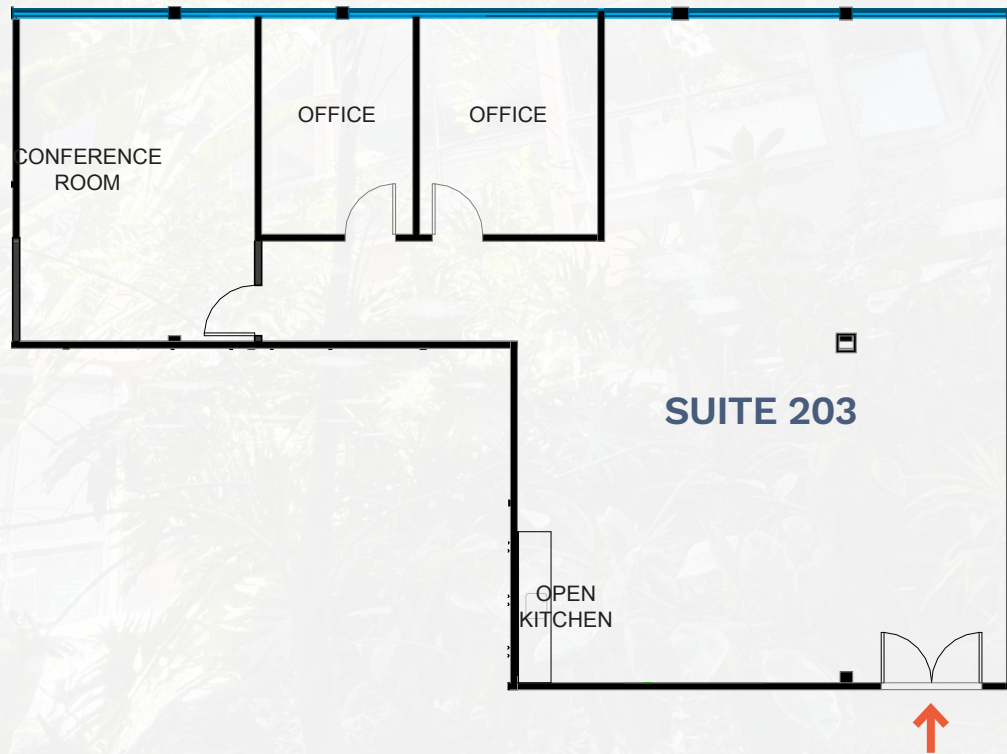
## SUITE 203: ±2,039 SF\*



### FEATURES

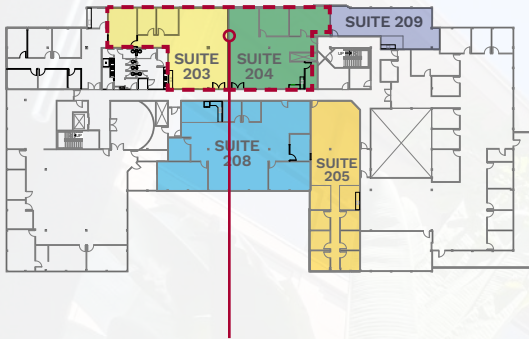
- 2 PRIVATE OFFICES
- 1 CONFERENCE ROOM
- OPEN KITCHEN
- REMAINDER OPEN OFFICE
- AMPLE WINDOW LINE

\*Can be combined  
with Suite 204 to  
accommodate ±4,138 SF



# FLOOR PLAN 2ND FLOOR

## SUITE 204: ±2,099 SF\*



\*Can be combined with  
Suite 203 to accommodate  
±4,138 SF

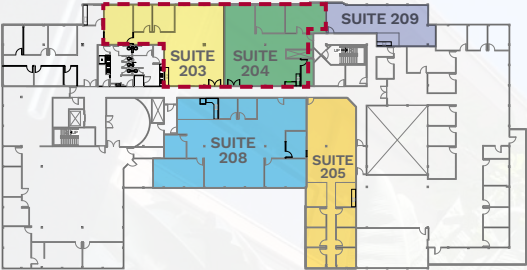
### FEATURES

- 1 PRIVATE OFFICE
- 1 CONFERENCE ROOM
- OPEN KITCHEN
- REMAINDER OPEN OFFICE
- AMPLE WINDOW LINE



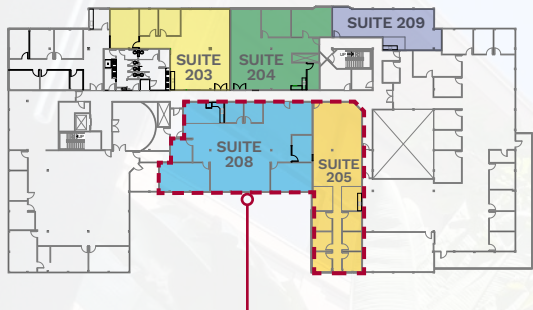
# FLOOR PLAN 2ND FLOOR

## SUITE 203 & 204: ±4,138 SF

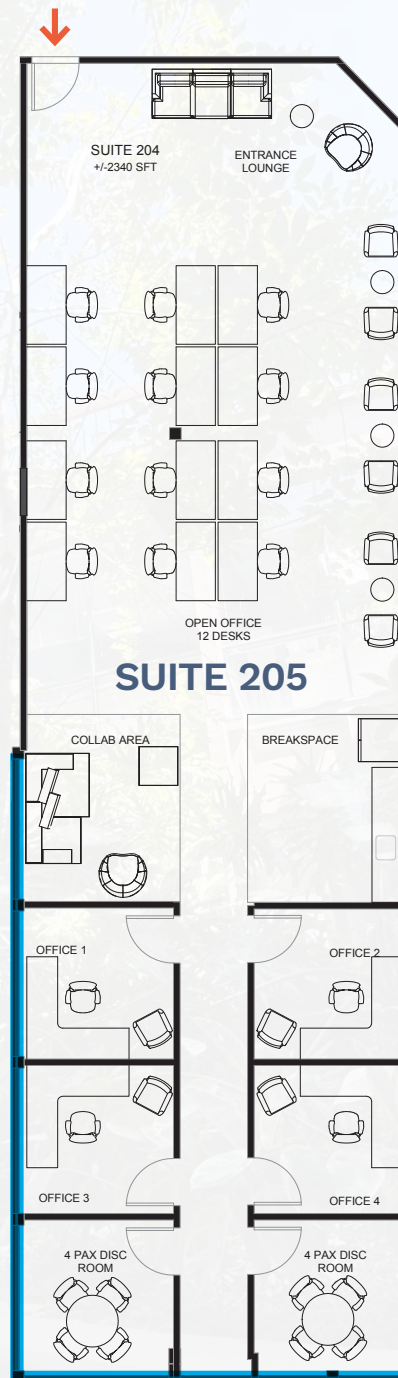


# FLOOR PLAN 2ND FLOOR

## SUITE 205: ±2,340 SF\*



\*Can be combined with  
Suite 208 to accommodate  
±6,036 SF

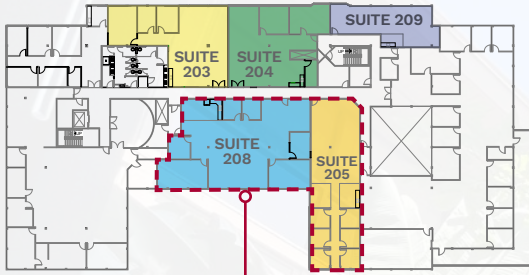


### FEATURES

- 4 PRIVATE OFFICES
- 2 SMALL CONFERENCE ROOMS
- BREAK AREA
- REMAINDER OPEN OFFICE
- WINDOW LINE ■

# FLOOR PLAN 2ND FLOOR

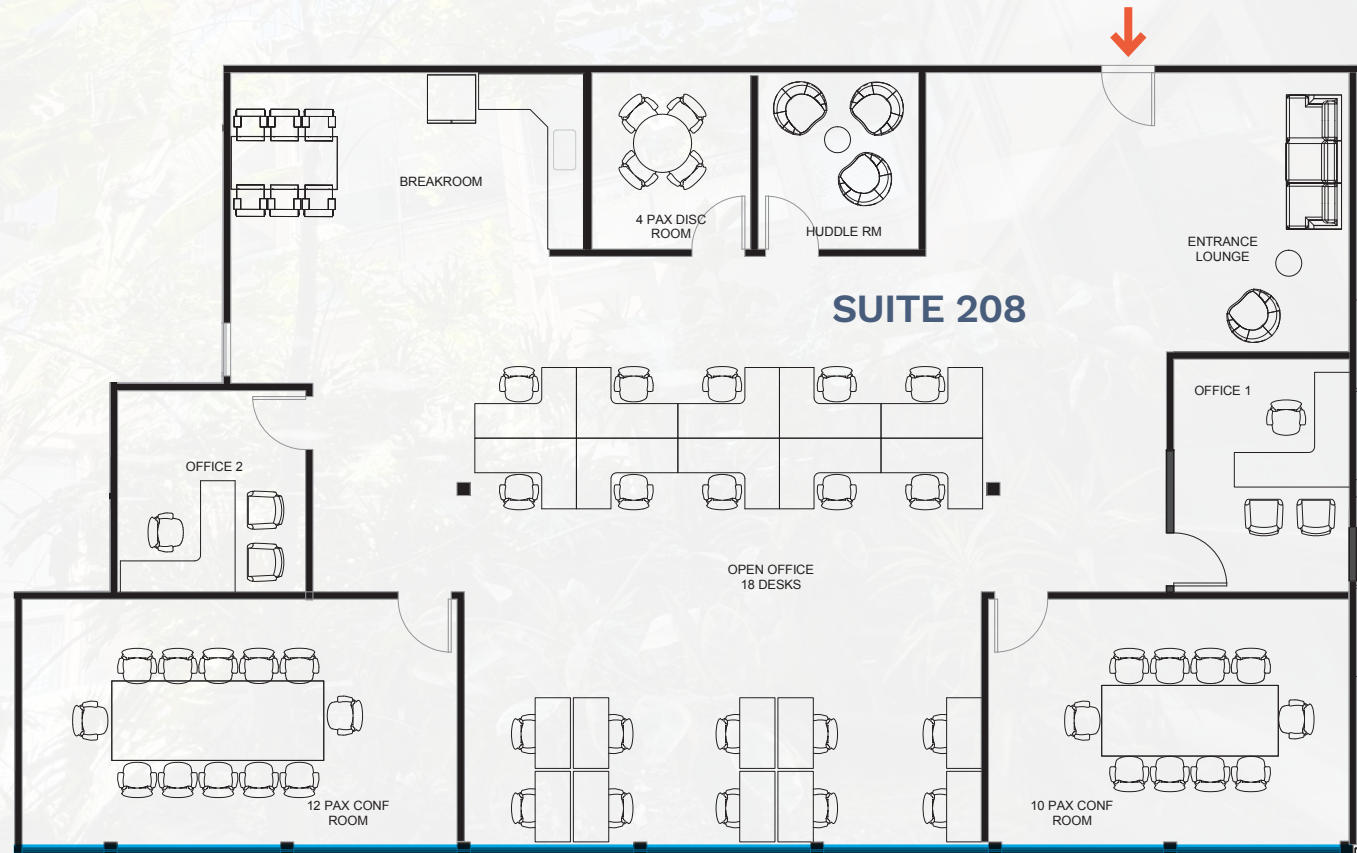
## SUITE 208: ±3,696 SF\*



### FEATURES

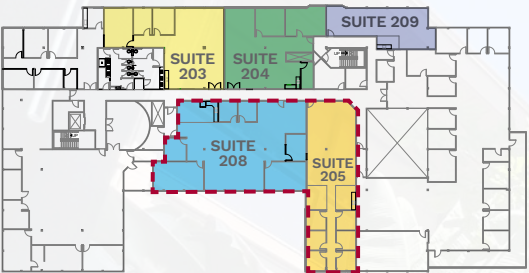
- 2 PRIVATE OFFICES
- 2 CONFERENCE ROOMS
- 2 HUDDLE ROOMS
- BREAK AREA
- REMAINDER OPEN OFFICE
- AMPLE WINDOW LINE

\*Can be combined with  
Suite 205 to accommodate  
±6,036 SF



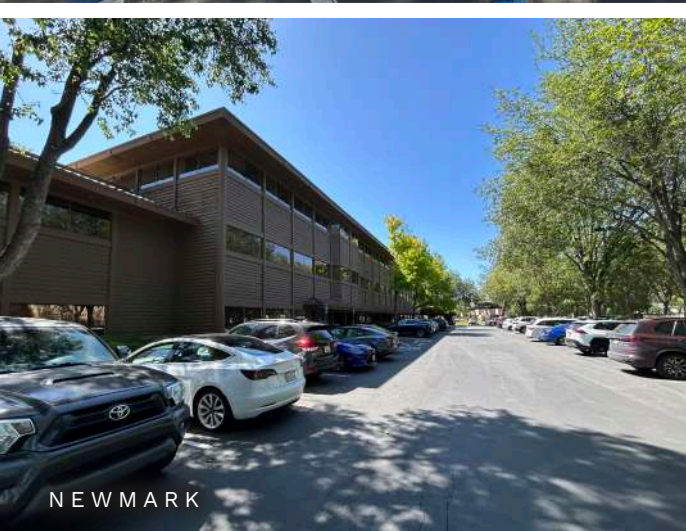
# FLOOR PLAN 2ND FLOOR

## SUITE 205 & 208: ±6,036 SF

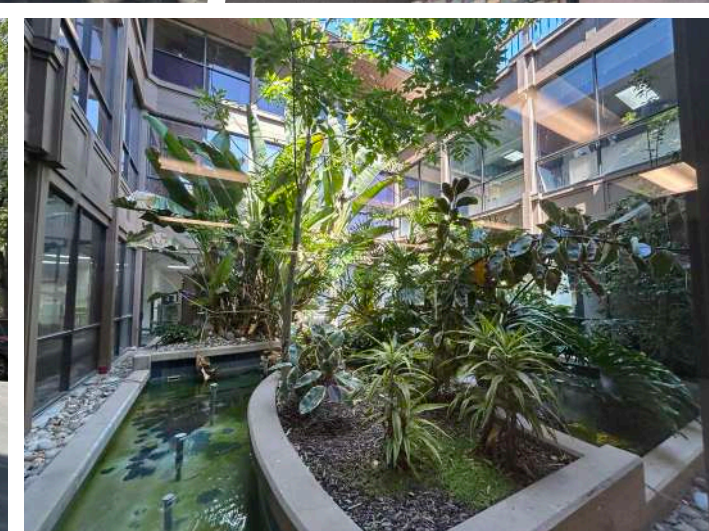




2290  
N FIRST ST



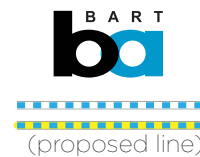
NEWMARK



2290 N FIRST STREET, SAN JOSE | 13

# NEARBY TRANSIT NETWORK

2290  
N FIRST ST



# NEARBY AMENITIES

2290  
N FIRST ST





# 2290 N FIRST ST

SAN JOSE, CA

3055 Olin Avenue, Suite 2200, San Jose, CA 95128 | The distributor of this communication is performing acts for which a real estate license is required. The information contained herein has been obtained from sources deemed reliable but has not been verified and no guarantee, warranty or representation, either express or implied, is made with respect to such information. Terms of sale or lease and availability are subject to change or withdrawal without notice. 9975245513 | 04/26

**NEWMARK**

**Gabe Regalado**

408.455.4913

[gabe.regalado@nmrk.com](mailto:gabe.regalado@nmrk.com)

CA RE LIC. #02008286

**Luke Allard**

408.476.6517

[luke.allard@nmrk.com](mailto:luke.allard@nmrk.com)

CA RE LIC. #01910058



**Roger Fields**

650.207.1610

Peninsula Land  
and Capital