

For Sublease

Doug Bansbach

Executive Vice President | NJ
Licensed Salesperson
Dir +1 732 807 0340
Mob +1 732 261 7477
Doug.Bansbach@colliers.com

Linda Hill, SIOR

Vice President | NJ
Licensed Salesperson
Dir + 1 732 807 0332
Mob + 1 908 447 7241
Linda.Hill@colliers.com

Colliers International NJ LLC

10 Woodbridge Center Drive
Suite 1010
Woodbridge, NJ 07095
+1 732 807 0400
[Bansbach-Hill Industrial Team | Colliers](#)

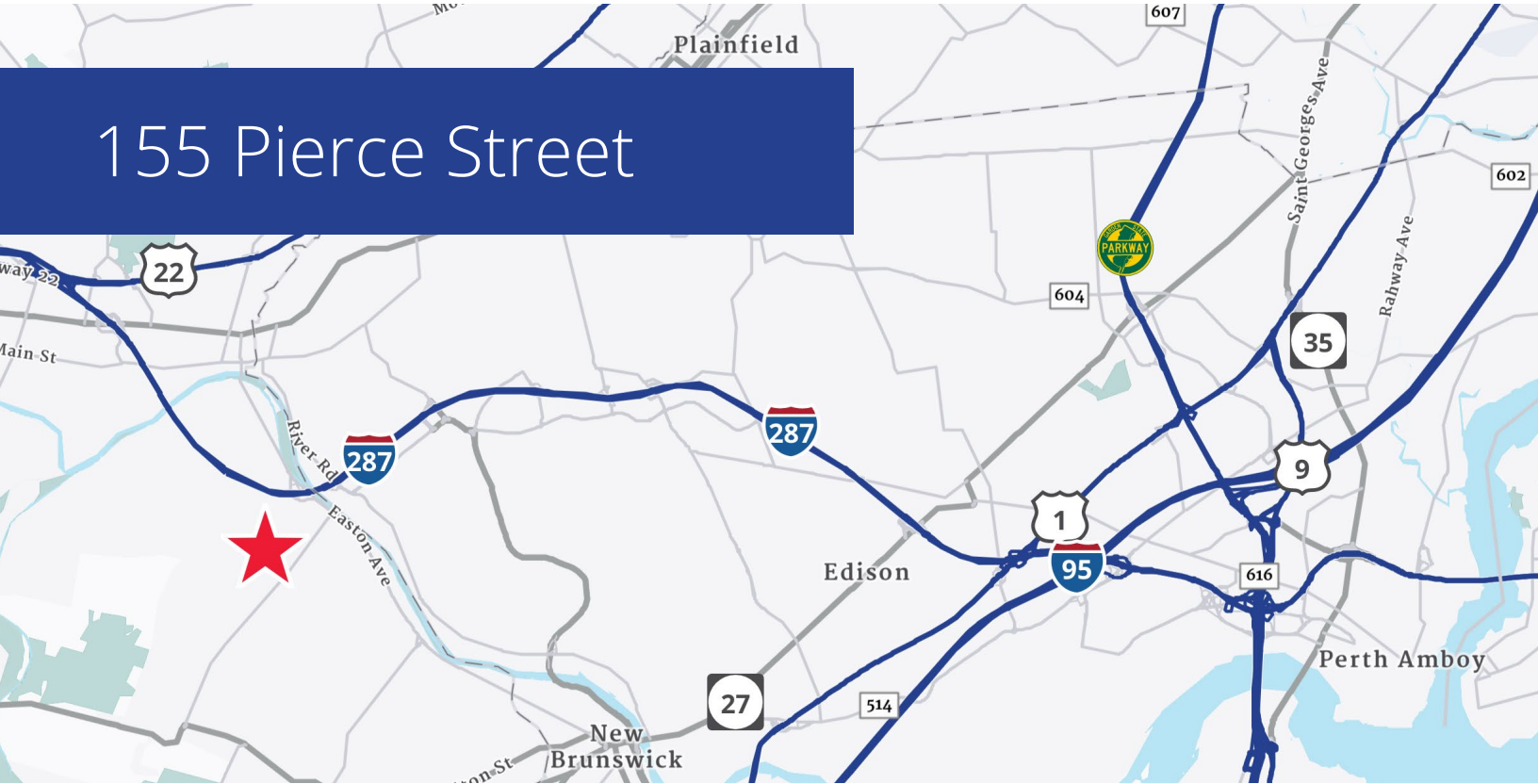
155 Pierce Street Somerset, New Jersey

Sublease Available Thru July 2030

Building Specifications

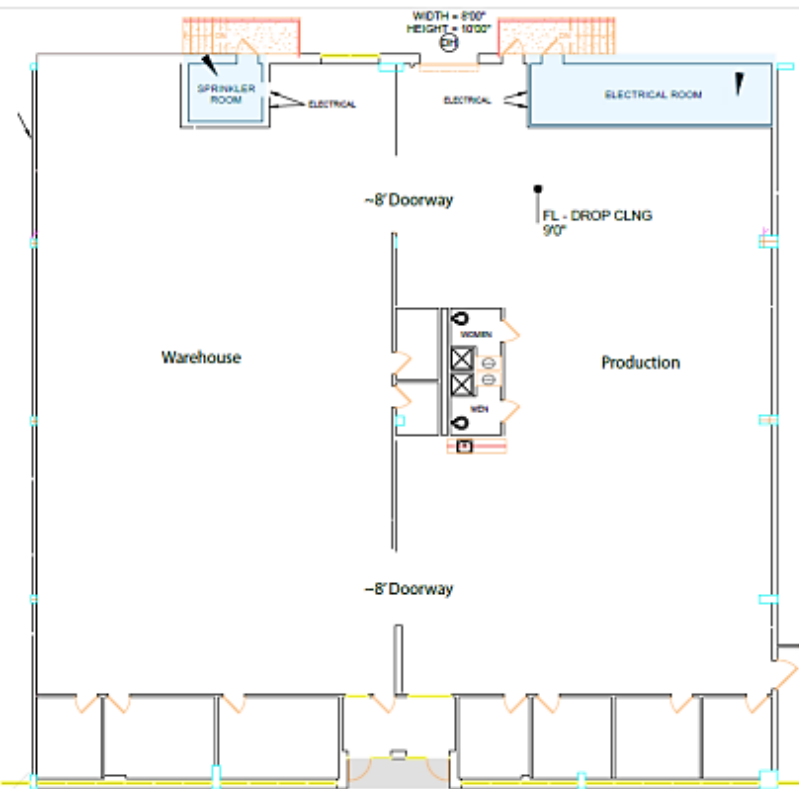
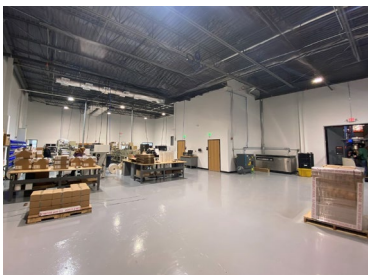
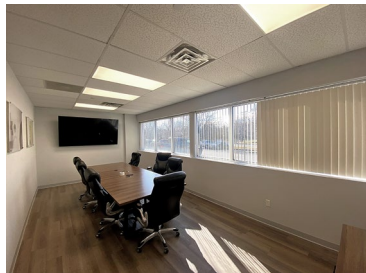
Available Space:	9,662 sf
Office To-suit:	+/-1,200 sf
Clear Height:	18' - 20'
Dock Doors:	2
Car Parking	35
Power:	2 - 200amp ,3 Phase, 208v Panels
Sprinklers:	Wet

155 Pierce Street



Location Information

NYNJ Ports 40 min 20 mi
NJ Turnpike 22 min 9.4 mi



Doug Bansbach

Executive Vice President I NJ
Licensed Salesperson
Dir + 1 732 807 0340
Mob + 1 732 261 7477
Doug.Bansbach@colliers.com

Linda Hill, SIOR

Vice President I NJ
Licensed Salesperson
Dir + 1 732 807 0332
Mob + 1 908 447 7241
Linda.Hill@colliers.com

Colliers International NJ LLC

10 Woodbridge Center Dr., #1010
Woodbridge, NJ 07095
+1 732 807 0400
colliers.com

This document/email has been prepared by Colliers for advertising and general information only. Colliers makes no guarantees, representations or warranties of any kind, expressed or implied, regarding the information including, but not limited to, warranties of content, accuracy and reliability. Any interested party should undertake their own inquiries as to the accuracy of the information. Colliers excludes unequivocally all inferred or implied terms, conditions and warranties arising out of this document and excludes all liability for loss and damages arising there from. This publication is the copyrighted property of Colliers and /or its licensor(s). © 2026. All rights reserved. This communication is not intended to cause or induce breach of an existing listing agreement. Colliers International NJ LLC