

1015 SHARY CIRCLE

CONCORD, CA

| ±2,867 SF AVAILABLE

1 MONTH FREE RENT FOR 3-YEAR LEASE & 2 MONTHS FREE RENT FOR 5-YEAR LEASE

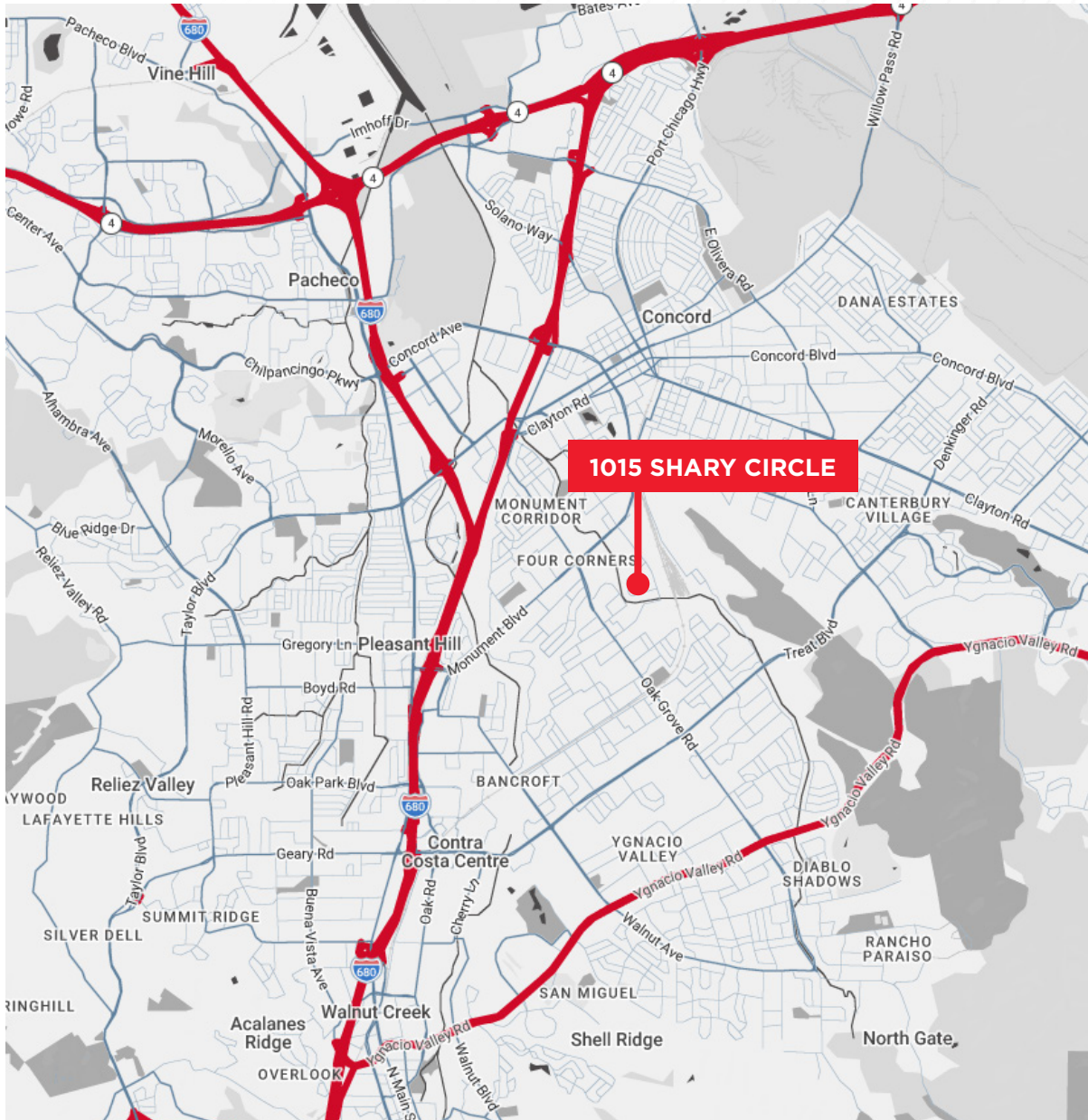
CONTINGENT UPON REVIEW OF FINANCIALS/CREDIT



WAREHOUSE / OFFICE SUITES FOR LEASE



THE LOCATION

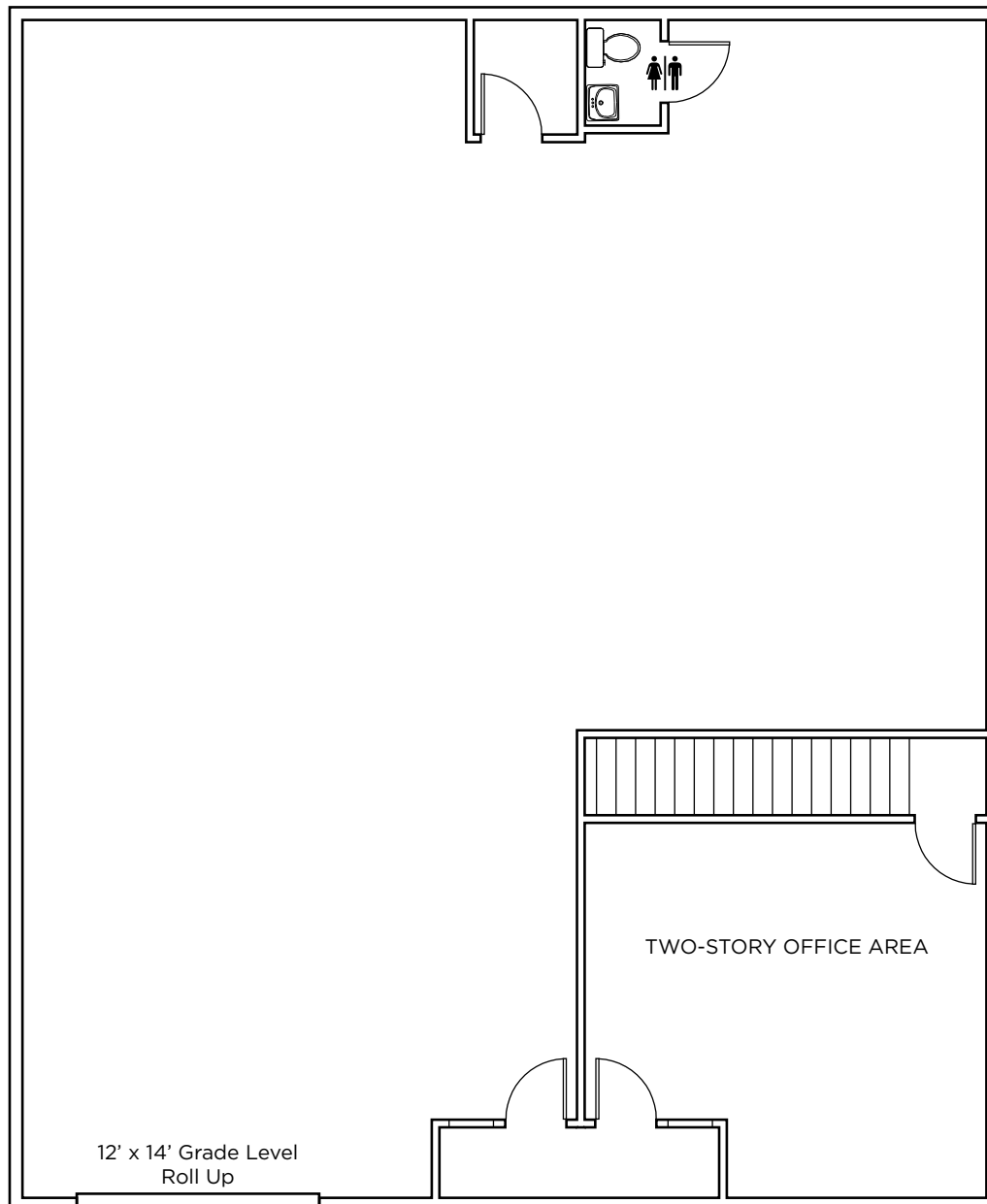


HIGHLIGHTS

Located in the middle of the vibrant Shary Industrial Park, 1015 Shary Circle is a revitalized office/warehouse project with rare small bay sizes. The project is professionally managed and maintained. Nearby amenities include Costco, restaurants, hotels, downtown Concord/Todos Santos Plaza, and the Concord BART station.

- Recently revamped and renovated light industrial/incubator building located in the desirable Shary Industrial Park.
- 1.7 parking stalls/1,000 SF
- Industrial Business Park (IBP) zoning allows for most light industrial nonautomotive uses.

FLOOR PLAN



SUITES 13 & 15



- ±2,867 Total SF
- ±2,642 SF Warehouse
- ±255 SF Office
- One (1) Rollup Door (12'x14')
- 100 Amps
- 17' Clear Height
- Office and Restroom Improvements
- \$1.75/SF Industrial Gross

FOR MORE INFORMATION, PLEASE CONTACT:

Tyler Epting
Managing Director
+1 925 548 3484
tyler.epting@cushwake.com
Lic. #01317533

Kris Hagar, SIOR
Senior Director
+1 925 382 8887
kris.hagar@cushwake.com
Lic. #02009499

Josh Messing
Associate
+1 925 849 2702
josh.messing@cushwake.com
Lic. #02344579



©2026 Cushman & Wakefield. All rights reserved. The information contained in this communication is strictly confidential. This information has been obtained from sources believed to be reliable but has not been verified. NO WARRANTY OR REPRESENTATION, EXPRESS OR IMPLIED, IS MADE AS TO THE CONDITION OF THE PROPERTY (OR PROPERTIES) REFERENCED HEREIN OR AS TO THE ACCURACY OR COMPLETENESS OF THE INFORMATION CONTAINED HEREIN, AND SAME IS SUBMITTED SUBJECT TO ERRORS, OMISSIONS, CHANGE OF PRICE, RENTAL OR OTHER CONDITIONS, WITHDRAWAL WITHOUT NOTICE, AND TO ANY SPECIAL LISTING CONDITIONS IMPOSED BY THE PROPERTY OWNER(S). ANY PROJECTIONS, OPINIONS OR ESTIMATES ARE SUBJECT TO UNCERTAINTY AND DO NOT SIGNIFY CURRENT OR FUTURE PROPERTY PERFORMANCE.

