



For Lease

±3,500 SF Warehouse with ±13,424 Yard

3200 Jefferson Boulevard, West Sacramento

Nathan Miller

Senior Associate
+1 916 563 3011
nathan.miller@colliers.com
CA Lic. 02097602

Michael Hoo, MBA

Vice President
+1 916 563 3087
michael.hoo@colliers.com
CA Lic. 01989521

Mark Demetre, SIOR

Vice Chair
+1 916 563 3010
mark.demetre@colliers.com
CA Lic. 00852871



Property Overview

Total Footprint: ±4,000 SF

Warehouse: ±3,500 SF

Office & Reception: ±500 SF

Yard: ±13,424 SF

Land Size (SF): ±43,560 SF (±1 AC)

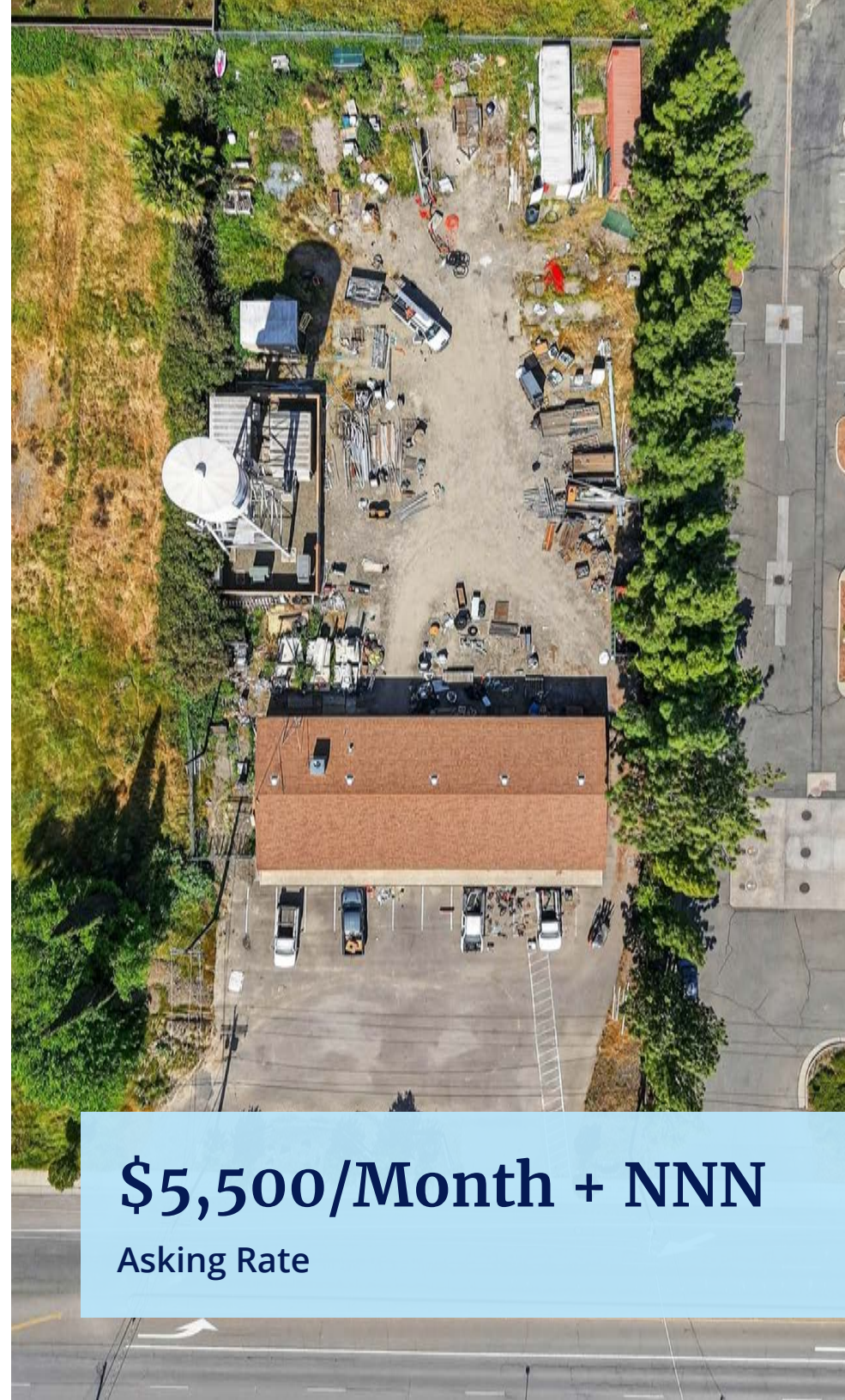
Loading: Three 16' x 10' GL Doors

Clear Height: 12'

Construction Type: Wood Frame

Other Features:

- Graveled, Fenced Yard
- Zoned Commercial - City of West Sacramento
- 10 Parking Spaces
- Clear Span Warehouse
- Septic & Well Utilities

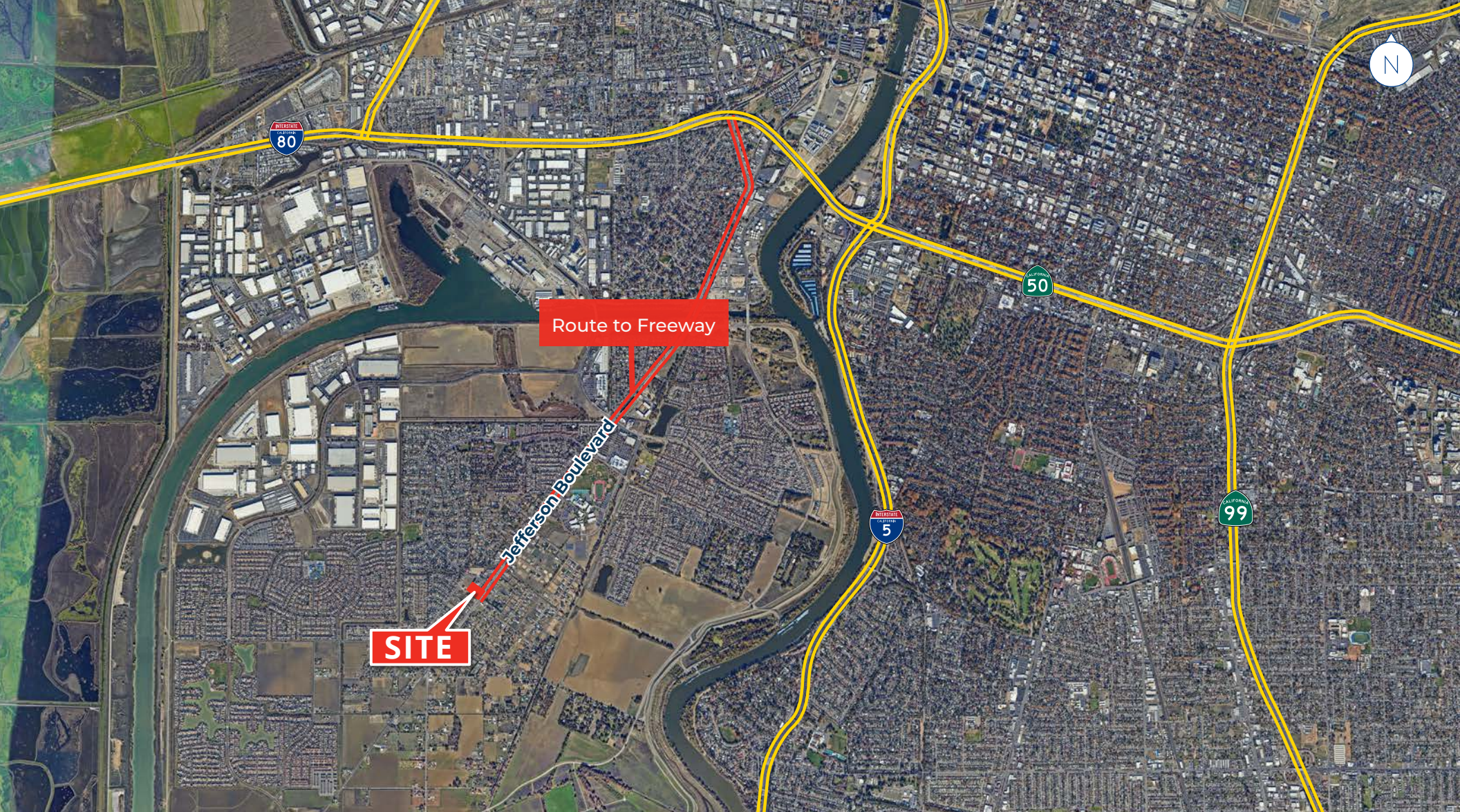


\$5,500/Month + NNN

Asking Rate

Property Photos





SITE

Route to Freeway

Jefferson Boulevard

Nathan Miller
Senior Associate
+1 916 563 3011
nathan.miller@colliers.com
CA Lic. 02097602

Michael Hoo, MBA
Vice President
+1 916 563 3087
michael.hoo@colliers.com
CA Lic. 01989521

Mark Demetre, SIOR
Vice Chair
+1 916 563 3010
mark.demetre@colliers.com
CA Lic. 00852871



This document/email has been prepared by Colliers for advertising and general information only. Colliers makes no guarantees, representations or warranties of any kind, expressed or implied, regarding the information including, but not limited to, warranties of content, accuracy and reliability. Any interested party should undertake their own inquiries as to the accuracy of the information. Colliers excludes unequivocally all inferred or implied terms, conditions and warranties arising out of this document and excludes all liability for loss and damages arising there from. This publication is the copyrighted property of Colliers and /or its licensor(s). © 2026. All rights reserved. This communication is not intended to cause or induce breach of an existing listing agreement.