



19-20 Great Sutton Street, London, EC1V 0DR

Sublease on 1400 sq ft of office space just off Clerkenwell Road.

Summary

Tenure	To Let
Available Size	1,400 sq ft / 130.06 sq m
Rent	Rent on application
Service Charge	Upon Enquiry
Business Rates	Upon Enquiry
EPC Rating	Upon enquiry

Key Points

- Cat A+ finish
- Sublease
- 7 Minutes from Barbican
- Air Conditioning
- 7 Minutes from Farringdon

Description

Sublease on 1400 sq ft of office space just off Clerkenwell Road.

1 Executive office and a 6 person meeting room.

18 Desks, soft seating and a kitchen

Property Highlights / Amenities

- Build Status: 2nd Hand - Existing

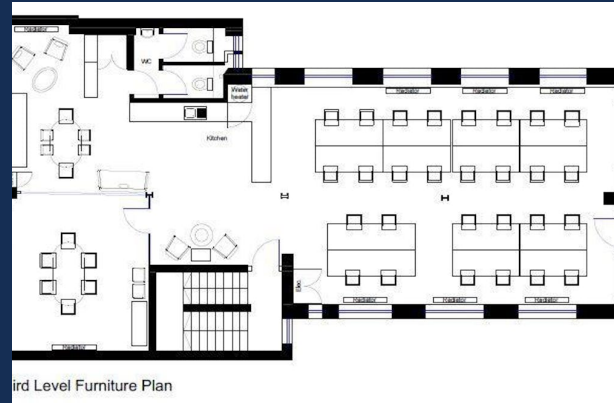
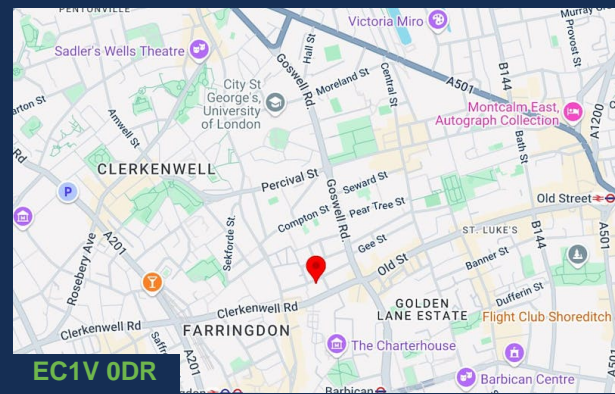
Location

Located on the south side of Great Sutton Street close to the junction with Berry Street and within 7 minutes of Barbican Underground Station.

Accommodation

The accommodation comprises the following areas:

Name	sq ft	sq m	Availability
3rd	1,400	130.06	Available
Total	1,400	130.06	



Viewing & Further Information



Lisa Moran

+ 44 (0)20 3141 6600 | 07808 073959

lmoran@jamesandrew.co.uk



Anton Grey

(0)20 3141 6600 | 07473 354543

Ahg@jamesandrew.co.uk



The above information contained within this email is sent subject to contract. These particulars are for general information only and do not constitute any part of an offer or contract. All statements contained therein are made without responsibility on the part of the vendors or lessors and are not to be relied upon as statement or representation of fact. Intending purchasers or lessees must satisfy themselves, by inspection, or otherwise, as to the correctness of each of the statements of dimensions contained in these particulars. Generated on 25/06/2025

