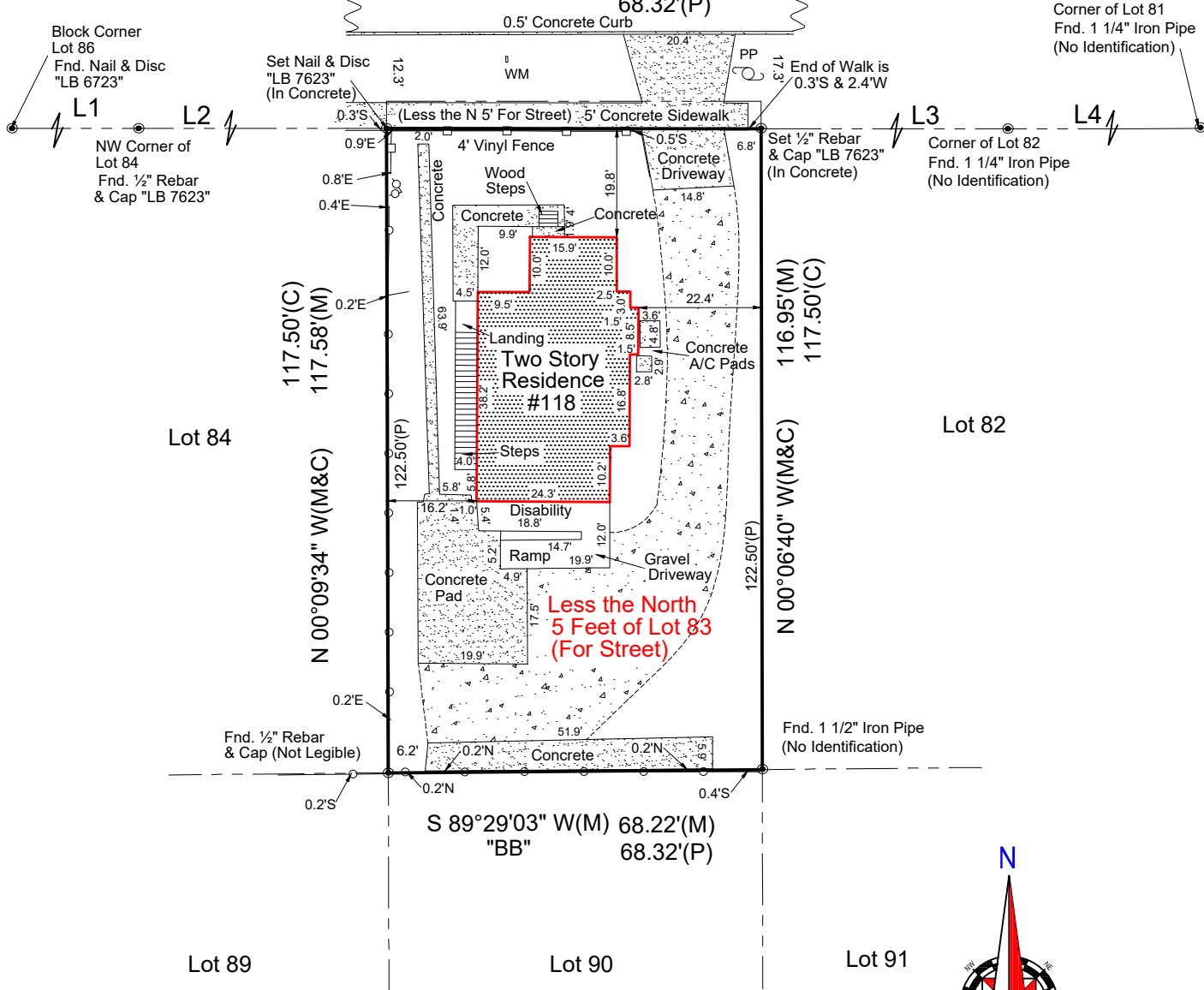


L1
129.65'(M)
S 89°59'04" W(M)

L2
68.32'(M)
S 89°59'13" E(M)

Pasadena Place
(Right-of-Way Varies)
(Asphalt Road)



Note:
All Bearings Shown Hereon
are "ASSUMED"

L3
68.32'(C)
68.73'(M)
S 89°59'13" E(M)

L4
68.32'(C)
68.50'(M)
N 89°34'39" E(M)

