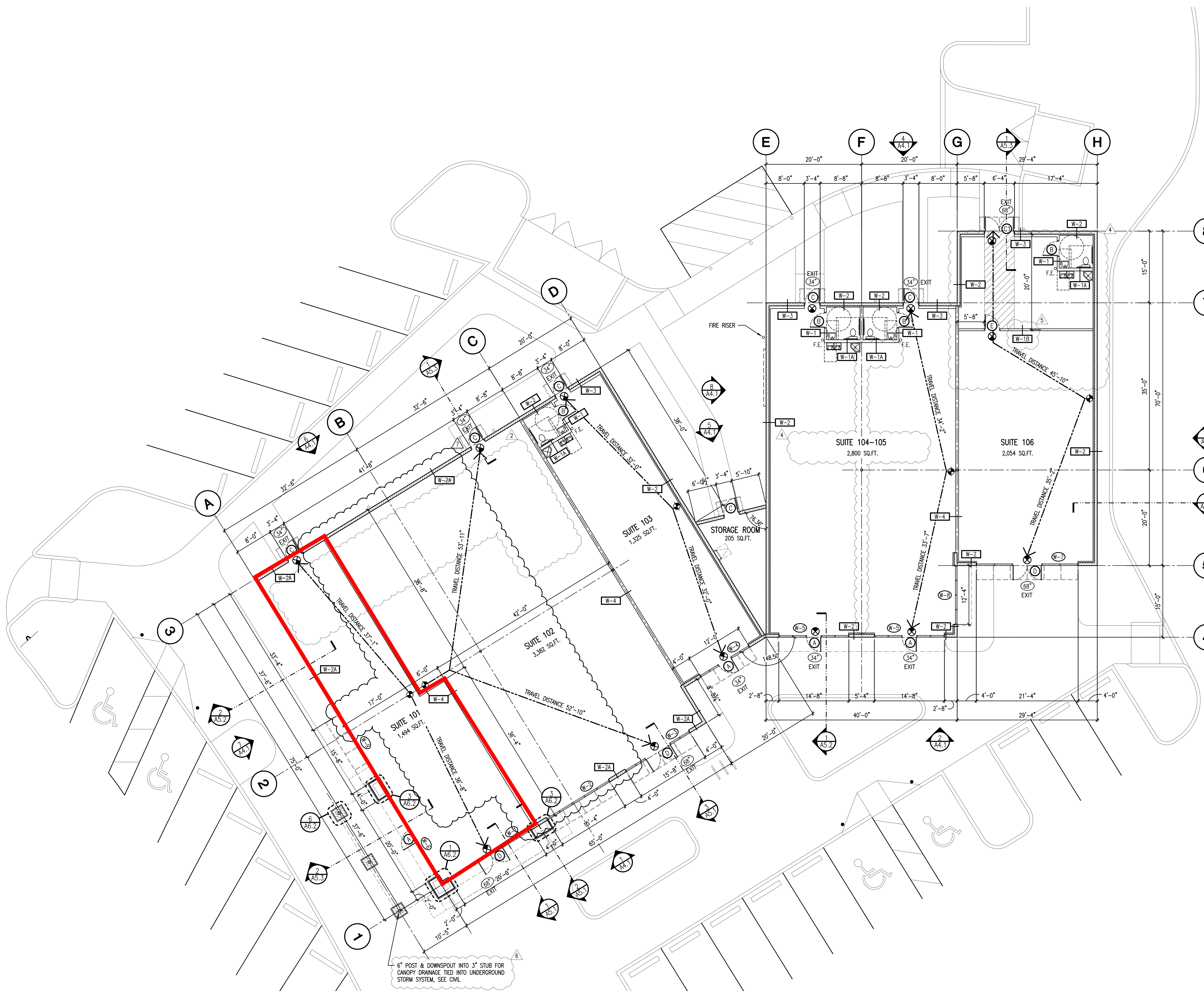


2024.08.12 11:02:53 AM, Job: 222035, 11/23/2024, Project: 222035, RIVERLAND TOWN CENTER BUILDING B, 12495 SW COMMUNITY BLVD., PORT ST. LUCIE, FL 34987



6" POST & DOWNSPOUT INTO 3" STUB FOR CANOPY DRAINAGE TIED INTO UNDERGROUND STORM SYSTEM, SEE CIVIL

1 FLOOR PLAN
 1/8" = 1'-0"

GENERAL NOTES

- TYPICAL DIMENSIONS ARE TAKEN AT CENTERLINE OF STUDS AND AT FACE OF MASONRY.
- DIMENSIONS AT PLASTER ARE TAKEN AT FACE OF FINISH.
- SEE A3.1 FOR DOOR & GLAZING SCHEDULES.
- STRIPED FLOOR AREA DENOTES CLEAR PATH THROUGH BACK ROOM. NO STORAGE IN THIS AREA.

LIFE SAFETY PLAN CALCULATIONS

| | |
|--|--|
| FUTURE TENANT UNIT #101 CALCULATED OCCUPANT LOAD: | |
| "UTILITY" (U) | 1,494 S.F. (GROSS) / 300 S.F. PER PERSON = 4.98 OCCUPANTS |
| TOTAL OCCUPANTS: | 5 |
| EGRESS WIDTH PER OCCUPANT: | 2" (FBC TABLE 1005.1) |
| EGRESS WIDTH REQUIRED: | 5 x 2" = 10" |
| EGRESS WIDTH PROVIDED: | 102" |
| MAXIMUM ALLOWABLE TRAVEL DISTANCE: | 400'-0" (FBC TABLE 1017.2) |
| MAXIMUM ACTUAL TRAVEL DISTANCE: | 37'-1" |
| FUTURE TENANT UNIT #102 CALCULATED OCCUPANT LOAD: | |
| "UTILITY" (U) | 3,382 S.F. (GROSS) / 300 S.F. PER PERSON = 11.27 OCCUPANTS |
| TOTAL OCCUPANTS: | 12 |
| EGRESS WIDTH PER OCCUPANT: | 2" (FBC TABLE 1005.1) |
| EGRESS WIDTH REQUIRED: | 12 x 2" = 24" |
| EGRESS WIDTH PROVIDED: | 102" |
| MAXIMUM ALLOWABLE TRAVEL DISTANCE: | 400'-0" (FBC TABLE 1017.2) |
| MAXIMUM ACTUAL TRAVEL DISTANCE: | 53'-11" |
| FUTURE TENANT UNIT #103 CALCULATED OCCUPANT LOAD: | |
| "RETAIL" (MERCANTILE "GROUP M") | 1,025 S.F. (GROSS) / 30 S.F. PER PERSON = 51 OCCUPANTS |
| TOTAL OCCUPANTS: | 51 |
| EGRESS WIDTH PER OCCUPANT: | 2" (FBC TABLE 1005.1) |
| EGRESS WIDTH REQUIRED: | 51 x 2" = 102" |
| EGRESS WIDTH PROVIDED: | 68" |
| MAXIMUM ALLOWABLE TRAVEL DISTANCE: | 250'-0" (FBC TABLE 1017.2) |
| MAXIMUM ACTUAL TRAVEL DISTANCE: | 32'-0" |
| FUTURE TENANT UNIT #104-105 CALCULATED OCCUPANT LOAD: | |
| "RETAIL" (MERCANTILE "GROUP M") | 2,800 S.F. (GROSS) / 30 S.F. PER PERSON = 93.33 OCCUPANTS |
| TOTAL OCCUPANTS: | 94 |
| EGRESS WIDTH PER OCCUPANT: | 2" (FBC TABLE 1005.1) |
| EGRESS WIDTH REQUIRED: | 94 x 2" = 188" |
| EGRESS WIDTH PROVIDED: | 136" |
| MAXIMUM ALLOWABLE TRAVEL DISTANCE: | 250'-0" (FBC TABLE 1017.2) |
| MAXIMUM ACTUAL TRAVEL DISTANCE: | 34'-2" |
| FUTURE TENANT UNIT #106 CALCULATED OCCUPANT LOAD: | |
| "RETAIL" (MERCANTILE "GROUP M") | 2,054 S.F. (GROSS) / 30 S.F. PER PERSON = 68.46 OCCUPANTS |
| TOTAL OCCUPANTS: | 69 |
| EGRESS WIDTH PER OCCUPANT: | 2" (FBC TABLE 1005.1) |
| EGRESS WIDTH REQUIRED: | 69 x 2" = 138" |
| EGRESS WIDTH PROVIDED: | 136" |
| MAXIMUM ALLOWABLE TRAVEL DISTANCE: | 250'-0" (FBC TABLE 1017.2) |
| MAXIMUM ACTUAL TRAVEL DISTANCE: | 36'-11" |

LIFE SAFETY NOTES

- PORTABLE FIRE EXTINGUISHERS SHALL BE IN COMPLIANCE WITH NFPA 8TH EDITION INCLUDING NFPA 1 & 101, 2021 EDITION. THERE SHALL BE A MINIMUM OF ONE EXTINGUISHER PER EVERY 2,500 SQ. FT. MINIMUM SIZE 2A10BC TYPE.
- EMERGENCY LIGHTING SHALL MEET REQUIREMENTS OF THE NFPA 8TH EDITION.
- EXIT LIGHTING SHALL MEET REQUIREMENTS OF THE NFPA 8TH EDITION.

MALTESE CROSS

OWNER SHALL PROVIDE, AT EACH MAIN ENTRY, THIS APPROVED FIRE SYMBOL, THE MALTESE CROSS, PRIOR TO RECEIVING A CERTIFICATE OF OCCUPANCY.

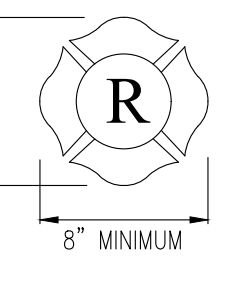
PLACEMENT: 24" TO THE LEFT OF EACH MAIN ENTRY.
 4'-0" A.F.F., MIN. TO BOTTOM OF SYMBOL.
 6'-0" A.F.F., MAX. TO TOP OF SYMBOL.

SIZE: 8"x8" MIN.

COLOR: A BRIGHT RED REFLECTIVE COLOR.

MOUNTING: SYMBOL TO BE PERMANENTLY ATTACHED TO THE FACE OF THE STRUCTURE ON A CONTRASTING BACKGROUND OR MOUNTED ON A CONTRASTING BASE MATERIAL WHICH IS THEN PERMANENTLY ATTACHED TO THE FACE OF THE STRUCTURE.

69A-60.008: NOTICE REQUIRED FOR STRUCTURES WITH LIGHT-FRAME TRUSS TYPE CONSTRUCTION. THE SYMBOL SHALL WARN PERSONS CONDUCTING FIRE CONTROL AND OTHER EMERGENCY OPERATIONS OF THE EXISTENCE OF THE LIGHT FRAME TYPE CONSTRUCTION IN THE STRUCTURE.



THE DRAWING AND ALL INFORMATION CONTAINED HEREIN IS THE EXCLUSIVE PROPERTY OF FISHER AND ASSOCIATES, LLC. NO PART OF THIS DRAWING IS TO BE REPRODUCED OR TRANSMITTED IN ANY FORM OR BY ANY MEANS, ELECTRONIC OR MECHANICAL, INCLUDING PHOTOCOPYING, RECORDING, OR BY ANY INFORMATION STORAGE AND RETRIEVAL SYSTEM, WITHOUT THE WRITTEN PERMISSION OF FISHER AND ASSOCIATES, LLC. THIS DRAWING IS FOR GENERAL USE ON THIS PROJECT ONLY. ALL RIGHTS RESERVED. TO THE BEST OF MY KNOWLEDGE, THE SPECIFICATIONS AND PLANS SHOWN HEREIN COMPLY WITH THE APPLICABLE MINIMUM BUILDING CODES IN EFFECT AT THE TIME.

FISHER AND ASSOCIATES, LLC.
 ARCHITECTS
 PLANNERS
 INTERIOR DESIGNERS
 AAS2007078
 286 BELLEAIR CLEWATER, FL 33784 (727) 448-4488

FLOOR PLAN
RIVERLAND TOWN CENTER
BUILDING B
12495 SW COMMUNITY BLVD.
PORT ST. LUCIE, FL 34987

Released For: BID
 Permit: 01-24-24
 Constr.:

REVISIONS:
 04-29-24 City Crmt
 08-01-24 Owner
 08-22-24 City Crmt
 01-13-25 City Crmt
 02-07-25 Owner

STATE OF FLORIDA
 REGISTERED ARCHITECT
 AR 0010829
 WILLIAM JOE FISHER
 ARCHITECT 0010829

A2.1
 Issue Date: 11-08-22
 Project No.: 222035