



Second Floor, The Barwick

16 Barwick Street, Birmingham, B3 2NT

**Office space available on
the 2nd Floor of this Grade II
Listed building.**

1,900 sq ft
(176.52 sq m)

- 1,900 sq ft (176.51 sq m)
- Second Floor office accommodation
- Grade II Listed building
- In the heart of Birmingham city centre
- Building is just a few steps away from Birmingham Snow Hill Station

Second Floor, The Barwick, 16 Barwick Street, Birmingham, B3 2NT

Summary

Available Size	1,900 sq ft
Rent	Rent on application
Business Rates	Occupiers will be responsible for paying Business Rates direct to the local authority
Service Charge	A Service Charge will be levied to cover the Landlord's services provided.
Car Parking	Upon Enquiry
VAT	Applicable
Legal Fees	Each party to bear their own costs
Estate Charge	Upon Enquiry
EPC Rating	B

Description

The Barwick is a boutique style Grade II* listed building located in the Colmore Business District.

The attached brochure is for the First Floor but the Second Floor space is identical. A new brochure will be available soon.

Location

This Grade II* listed property is located in a superb position on Barwick Street within the heart of Birmingham city centre.

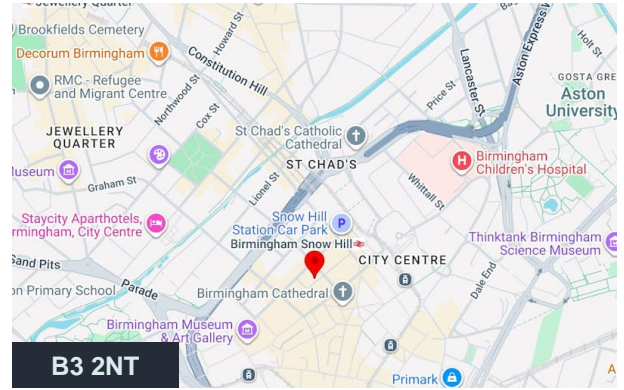
The building's city centre location affords it the best of business and pleasure with Birmingham's array of retail, leisure and entertainment opportunities on the doorstep.

The building is just a few short steps away from Birmingham's Snow Hill station and close to New Street station on foot.

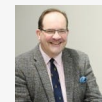
Accommodation

The accommodation comprises the following areas:

Name	sq ft	sq m	Availability
2nd - 2nd Floor, The Barwick	1,900	176.52	Available
Total	1,900	176.52	



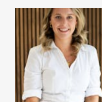
Viewing & Further Information



Charles Warrack

0121 561 7885 | 07977 512965

charles.warrack@fishergerman.co.uk



Ellie Fletcher

01213 891507 | 07974 431243

ellie.fletcher@fishergerman.co.uk