

For Lease

2314 LA MIRADA DR

A ±3,952 industrial building ideally located in Vista, CA





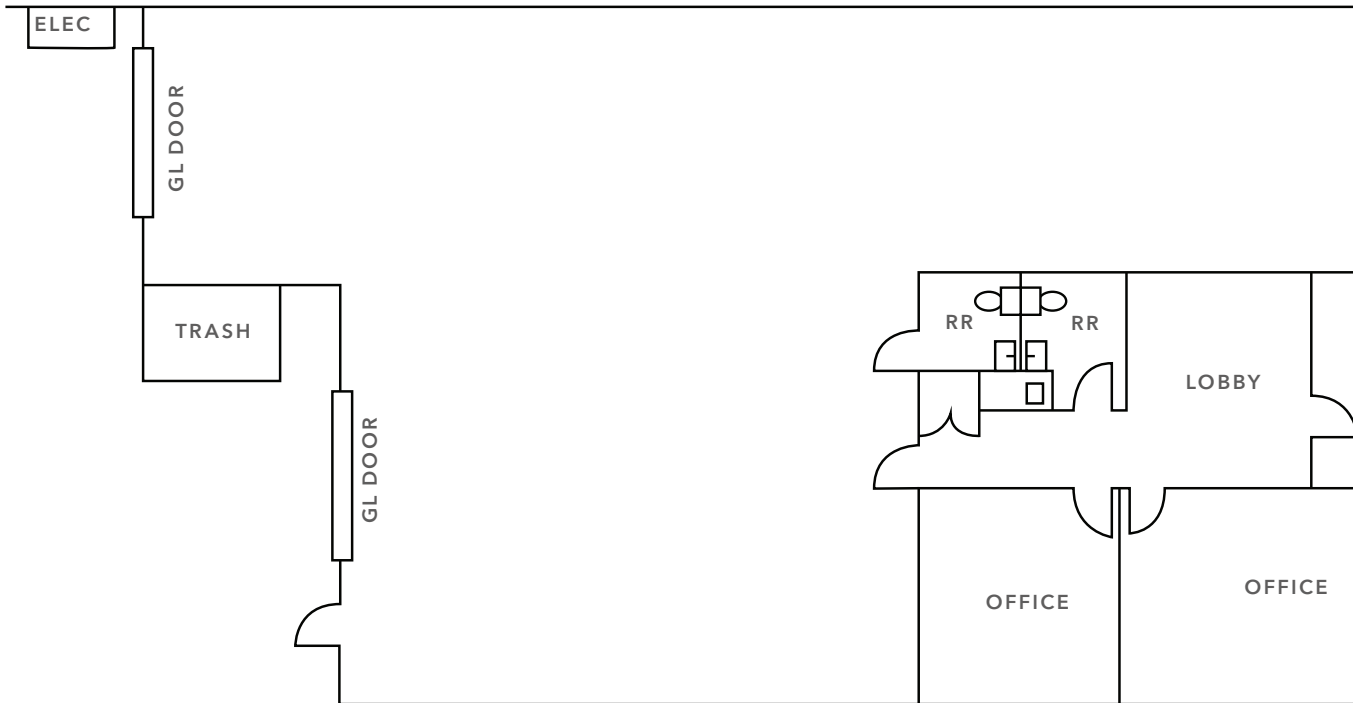
2314 La Mirada Dr is a spacious ±3,952 SF, single-story, industrial building in a desirable North County location.

| | |
|---------------|------------------------------------|
| ADDRESS | 2314 La Mirada Dr, Vista, CA 92081 |
| BUILDING SIZE | ±3,952 SF |
| OFFICE AREA | ±23% |
| ZONING | SP-VBP |
| CLEAR HEIGHT | 18' |
| POWER | 200 amps, 120/208 volt, 3-Phase |
| YEAR BUILT | 2004 |
| STORIES | 1 |
| BUILDING TYPE | Concrete Tilt-Up |
| PARKING | 2.4/1,000 SF |
| LOADING | 2 Grade-Level Doors |

\$1.75/SF

LEASE RATE (GROSS)

FLOOR PLAN

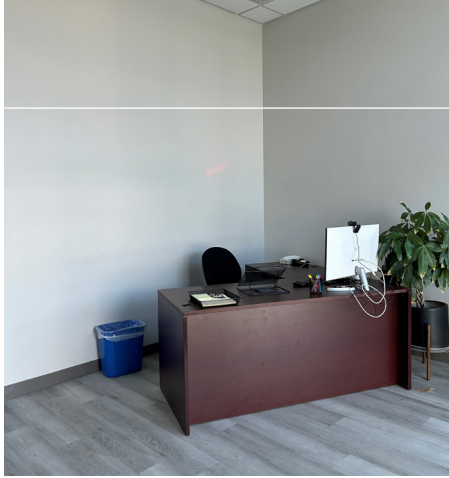


±3,952 SF
AVAILABLE

±23%
OFFICE AREA

\$1.75/SF
LEASE RATE (GROSS)

2314 LA MIRADA DR



AVAILABLE FOR LEASE



KIDDER MATHEWS

LOS ANGELES
100 Min | 95 Miles

LONG BEACH
80 Min | 88 Miles

2314 LA MIRADA DR

SAN DIEGO
40 Min | 40 Miles

US/MX BORDER
50 Min | 52 Miles



2314 LA MIRADA DR



*Exclusively
listed by*

JIM BENSON
760.822.7428
jim.benson@kidder.com
LIC N° 01204845

KIDDER.COM

This information supplied herein is from sources we deem reliable. It is provided without any representation, warranty, or guarantee, expressed or implied as to its accuracy. Prospective Buyer or Tenant should conduct an independent investigation and verification of all matters deemed to be material, including, but not limited to, statements of income and expenses. Consult your attorney, accountant, or other professional advisor.

