

MSC

OWNED &  
MANAGED BY



brandywine  
REALTY TRUST

# THREE LOGAN SQUARE

1717 ARCH STREET | LOGAN SQUARE. PHILADELPHIA.PA

1,681 SF TURN-KEY QSR SPACE FOR LEASE

# FULL SERVICE AND FAST CASUAL RESTAURANTS WITHIN ONE BLOCK



ASSEMBLY



J G  
S K Y H I G H



# DEMAND DRIVERS WITHIN ONE BLOCK

**800**

HOTEL KEYS

**1,100**

RESIDENTIAL  
UNITS

**6M SF**

TROPHY  
OFFICE SPACE



# THREE LOGAN SQUARE

## DEMOGRAPHICS

Center City Trade Area  
From the River to River between Girard Avenue & Tasker Avenue

EST. POPULATION

**188,131**

EST. MED HH INCOME

**\$99,150**

EST. MEDIAN AGE

**35**

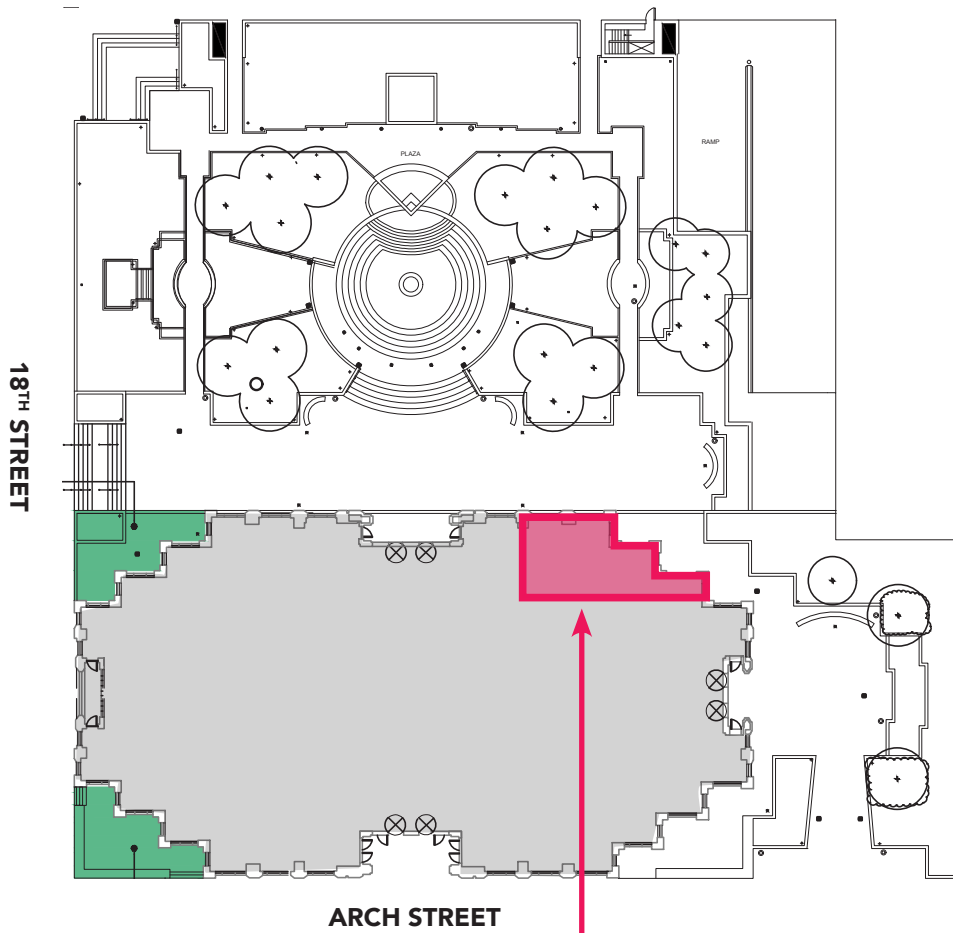
EST. EMPLOYEES

**258,822**

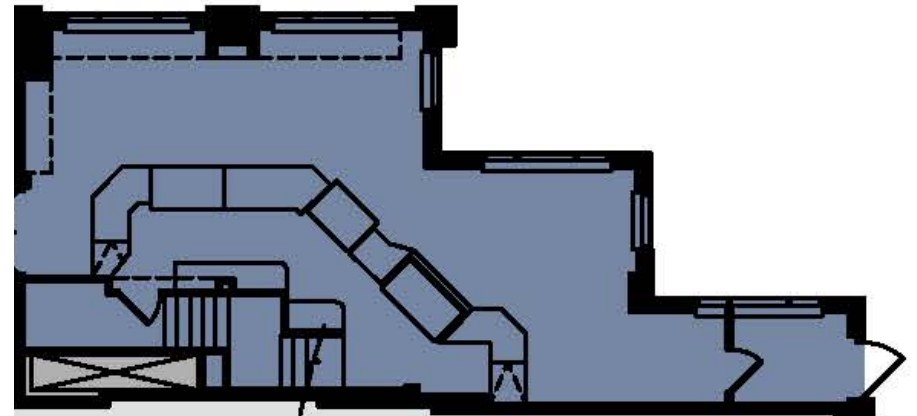
## PROPERTY DETAILS

- ▶ 1,681 SF fronting picturesque courtyard
- ▶ Includes full build out and additional square footage in mezzanine with cold boxes and prep area
- ▶ Ground floor of 1M SF trophy office tower
- ▶ Top caliber casual and fine dining options within one block have created critical mass and a dining destination
- ▶ Strong demand generated by 27M SF of office in Central Business District West, nearby hotels, and proximity to the Rittenhouse Square and Logan Square neighborhoods

# SITE PLAN



Scan for  
virtual tour



PHOTOS



AERIAL



The information contained herein has been obtained from sources deemed reliable. MSC cannot verify it and makes no guarantee, warranty or representation about its accuracy. Any projections, opinions, assumptions or estimates provided by MSC are for discussion purposes only and do not represent the current or future performance of a property, location or market.

# DENSITY MAP



<span style="color: blue;">■</span>	<b>OFFICE</b>	27,000,000 SF
<span style="color: purple;">■</span>	<b>RESIDENTIAL</b>	4,100 Units
<span style="color: pink;">■</span>	<b>HOTEL</b>	2,800 Keys

The information contained herein has been obtained from sources deemed reliable. MSC cannot verify it and makes no guarantee, warranty or representation about its accuracy. Any projections, opinions, assumptions or estimates provided by MSC are for discussion purposes only and do not represent the current or future performance of a property, location or market.

# MSC

**JOSH WEISS**

[jweiss@hellomsc.com](mailto:jweiss@hellomsc.com)

215.883.7389

**JULIA MCMANUS**

[jmcmamus@hellomsc.com](mailto:jmcmamus@hellomsc.com)

215.883.7376

