



W10 Studios

2-4 Exmoor Street, London, W10 6BD

**small self contained studios
with their own tea points,
fully inclusive rents and
access to a courtyard**

82 to 1,990 sq ft
(7.62 to 184.88 sq m)

- self contained
- fully inclusive monthly costs
- small tea points in each unit
- access to a communal courtyard
- wooden floors in most of the units

W10 Studios, 2-4 Exmoor Street, London, W10 6BD

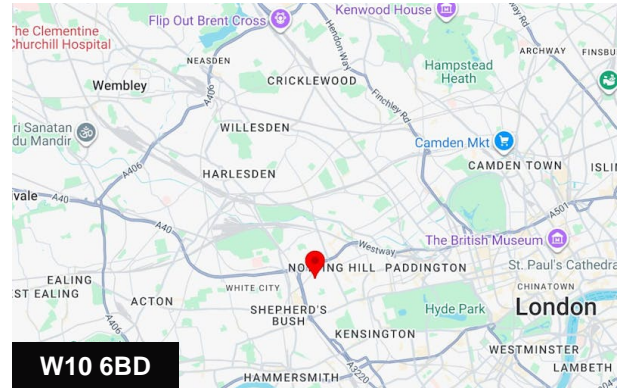
Summary

| | |
|-----------------------|---|
| Available Size | 82 to 1,990 sq ft |
| Rent | £195 - £6,250 per month the monthly costs is fully inclusive of rent, rates, service charge and electricity |
| Business Rates | N/A |
| Service Charge | N/A |
| Estate Charge | N/A |
| EPC Rating | Upon enquiry |

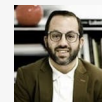
Accommodation

The accommodation comprises the following areas:

| Name | sq ft | sq m | Availability |
|--------------------------------|--------------|---------------|--------------|
| Ground - Unit 6 | 105 | 9.75 | Available |
| Ground - Unit 9 | 93 | 8.64 | Available |
| Ground - unit 10 | 106 | 9.85 | Available |
| 1st | 1,990 | 184.88 | Available |
| 1st - Unit 21 | 113 | 10.50 | Available |
| 1st - unit 22 | 108 | 10.03 | Available |
| 1st - Unit 23+24 | 266 | 24.71 | Available |
| 2nd - Loft Unit 11.6 | 160 | 14.86 | Available |
| 2nd - Unit 27 | 322 | 29.91 | Available |
| 2nd - unit 9.4 160 Barlby road | 82 | 7.62 | Available |
| 2nd - unit 9.5 160 Barlby Road | 103 | 9.57 | Available |
| 2nd - unit 9.6 160 Barlby Road | 102 | 9.48 | Available |
| Total | 3,550 | 329.80 | |

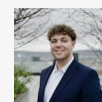


Viewing & Further Information



Simon Rinder

020 7399 8611 | 07734 488 286
simonrinder@pilcher.london



Taylor Rosen

020 7399 8610 | 07834 789 346
taylorrosen@pilcher.london