



PRESENTED BY

Valinda Plaza

Warren Tsang
Senior Associate
951-283-1888
DRE #01993434
wtsang@mgrrealestate.com

Maximilian Tsang
Associate
909-539-5055
DRE #02244101
maxtsang@mgrrealestate.com

Michelle Tsang
Senior Associate
951-283-8868
DRE #01992330
mtsang@mgrrealestate.com

1401 Valinda Ave., La Puente, CA 92843

Suite F is an end cap retail unit with an open floor plan:

Asking: \$3,965.00/month

- 1421 Rentable Sq. Ft
- 1 restroom
- Central HVAC
- On the signalized corner of Valinda Avenue and Maplegrove Street.



COMMERCIAL | RESIDENTIAL | PROPERTY MANAGEMENT

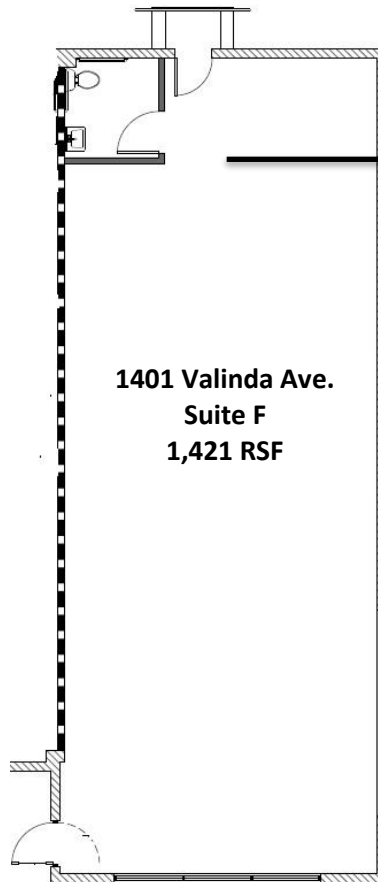
ONTARIO COSTA MESA VICTORVILLE RANCHO MIRAGE CARLSBAD IRVINE

(800) 777-7647 mgrrealestate.com DRE #01841921

All items on this page are deemed to be accurate, but should be viewed as reference only. MGR Real Estate, Inc. does not warranty/guaranty the validity of any information on this page.



1401 Valinda Ave., La Puente, CA, 91744
1,421 RSF
(Not to Scale)



For more information, contact:		
<p>Michael G. Rademaker Founder / Broker DRE #00556679 Office Direct: (909) 579-1340</p>	<p>Warren Tsang Senior Associate DRE. #01993434 Mobile: (951) 283-1888</p>	<p>Maximilian Tsang Associate DRE #02244101 Mobile: (909) 539-5055</p>

*All items on this page are deemed to be correct but should be viewed as reference only. MGR Real Estate, Inc. does not warranty/guaranty the validity of any information on this page.

MGR Real Estate Inc. 3800 Concourse, Suite 100, Ontario, California 91764 | Office: 909-981-4466 / Fax: 909-981-6267