

FOR LEASE

1413 MAIN STREET

Sarasota, FL 34236





PROPERTY DESCRIPTION

Once in a lifetime opportunity to lease a fully built restaurant with a spacious covered patio at the bottom of one of the premier mixed-use towers in downtown Sarasota. Located in the heart of the city "Five Points", the space enjoys excellent visibility on lower Main Street, expansive windows flooding the interior with natural light. The space is within walking distance to all Sarasota has to offer, The Bayfront, Retail Shops, The Opera, Florida Studio Theater and much more. Take advantage of this unparalleled opportunity to establish your business in this vibrant and dynamic community.

PROPERTY HIGHLIGHTS

- Location, Location, Location..
- Expansive windows
- High ceilings for a spacious feel
- Modern and stylish interior design

OFFERING SUMMARY

Lease Rate:	\$55.00 SF/yr (NNN)
Number of Units:	1
Available SF:	5,000 SF
Building Size:	5,000 SF

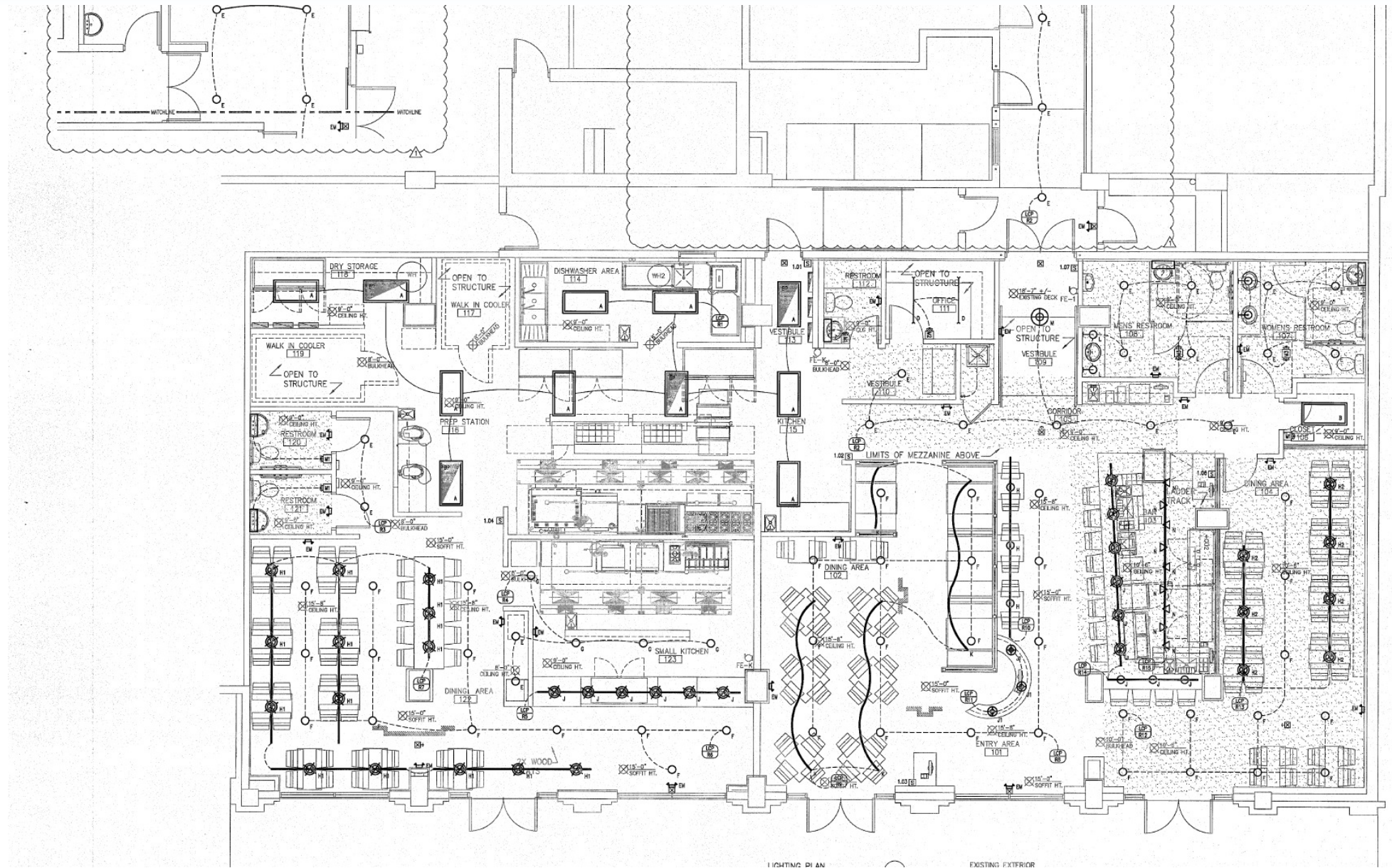
DEMOGRAPHICS

	0.5 MILES	1 MILE	2.5 MILES
Total Households	2,776	6,272	21,858
Total Population	4,691	11,528	48,572
Average HH Income	\$164,516	\$149,395	\$124,876



STEVE HORN, CCIM
O: 941.906.8688 x107
steve@ian-black.com

FLOOR PLAN



STEVE HORN, CCIM
 O: 941.906.8688 x107
 steve@ian-black.com



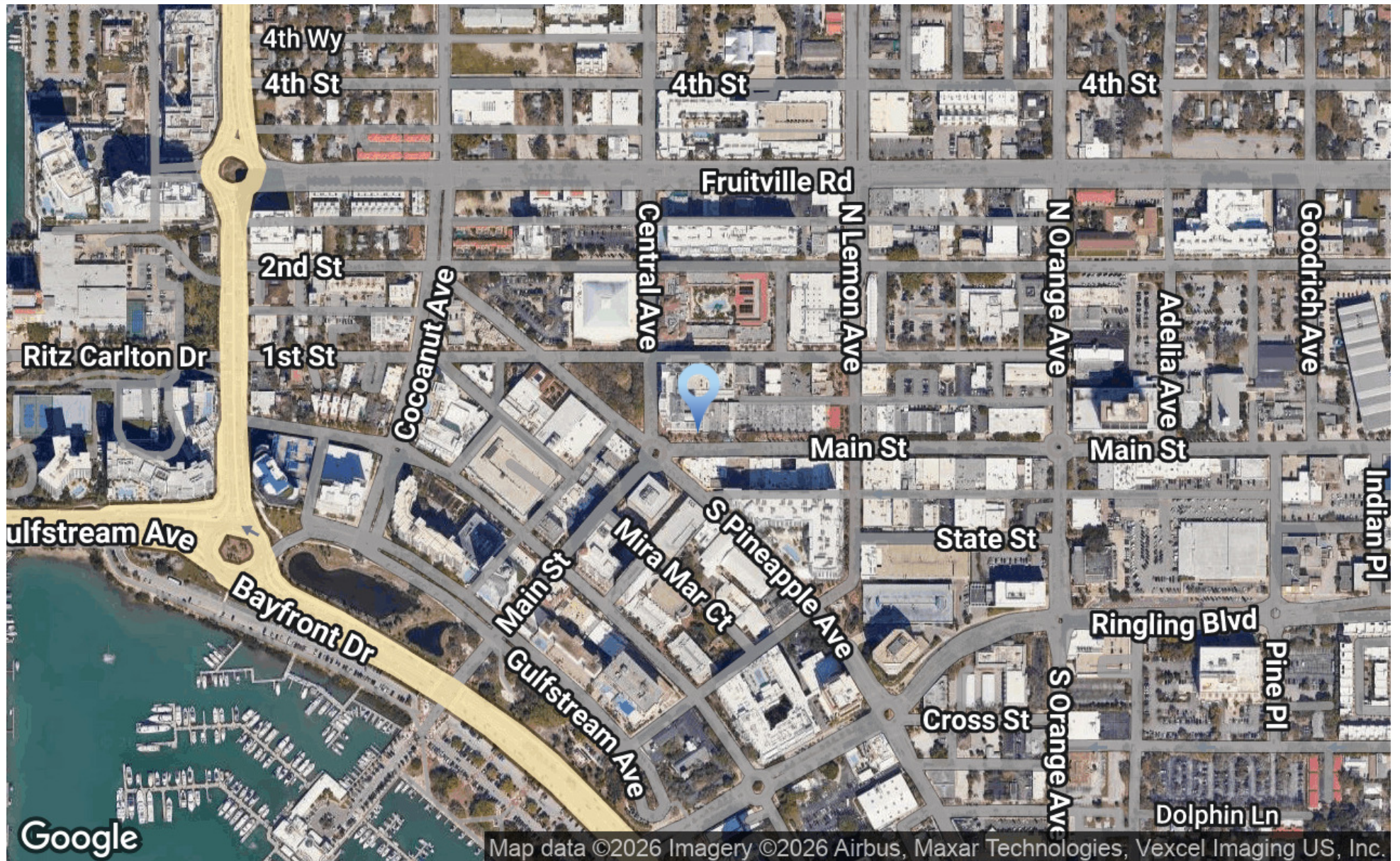
1413 MAIN STREET
Sarasota, FL 34236



STEVE HORN, CCIM
O: 941.906.8688 x107
steve@ian-black.com



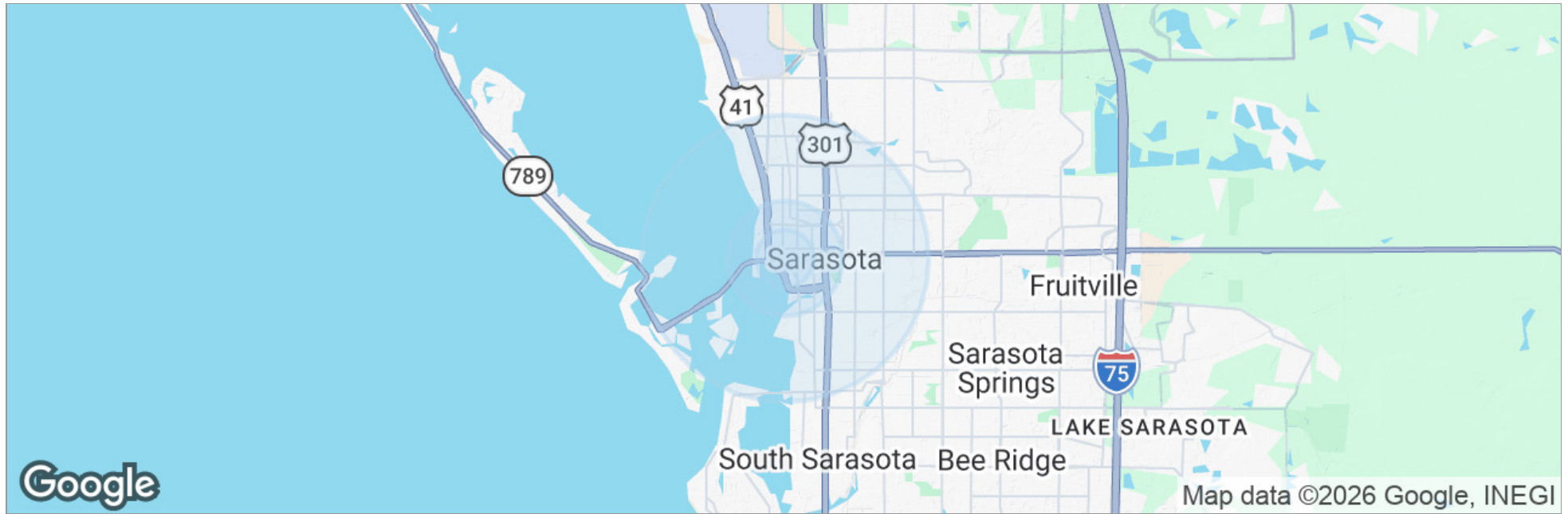
1413 MAIN STREET
Sarasota, FL 34236



STEVE HORN, CCIM
O: 941.906.8688 x107
steve@ian-black.com



1413 MAIN STREET
Sarasota, FL 34236



	0.5 Miles	1 Mile	2.5 Miles
Total Population	4,691	11,528	48,572
Population Density	5,973	3,669	2,474
Median Age	61.9	57.2	48.5
Median Age (Male)	58.4	54.2	46.0
Median Age (Female)	62.7	59.5	50.4
Total Households	2,776	6,272	21,858
# of Persons Per HH	1.7	1.8	2.2
Average HH Income	\$164,516	\$149,395	\$124,876
Average House Value	\$1,328,652	\$1,060,982	\$721,319

* Demographic data derived from 2020 ACS - US Census



STEVE HORN, CCIM
O: 941.906.8688 x107
steve@ian-black.com

