

±2,684 SF INDUSTRIAL UNIT FOR SUBLEASE AT
CORAL TREE COMMERCE CENTER



2780 LA MIRADA DRIVE, UNIT E
VISTA, CALIFORNIA 92081



2780

LA MIRADA DR.
SUITE E
VISTA, CA 92081

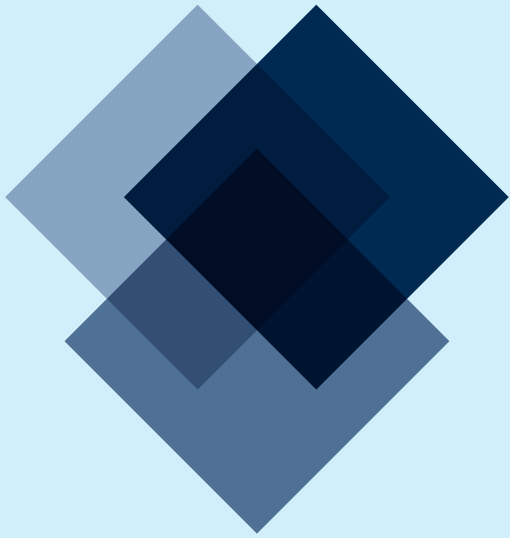
SUBLEASE RATE

\$1.40 PSF NNN



PREMISE OVERVIEW

- ±2,684 SF Industrial / Flex warehouse unit available for sublease at Coral Tree Commerce Center
- ±2.25/1,000 SF parking ratio
- ±10' x 14' grade-level door in each unit
- ±22' clear height
- Skylights
- Freeway access to Highway-78 between Interstates 5 and 15
- Master Lease expires May 31, 2026



2780
LA MIRADA DR.
SUITE E
VISTA, CA 92081

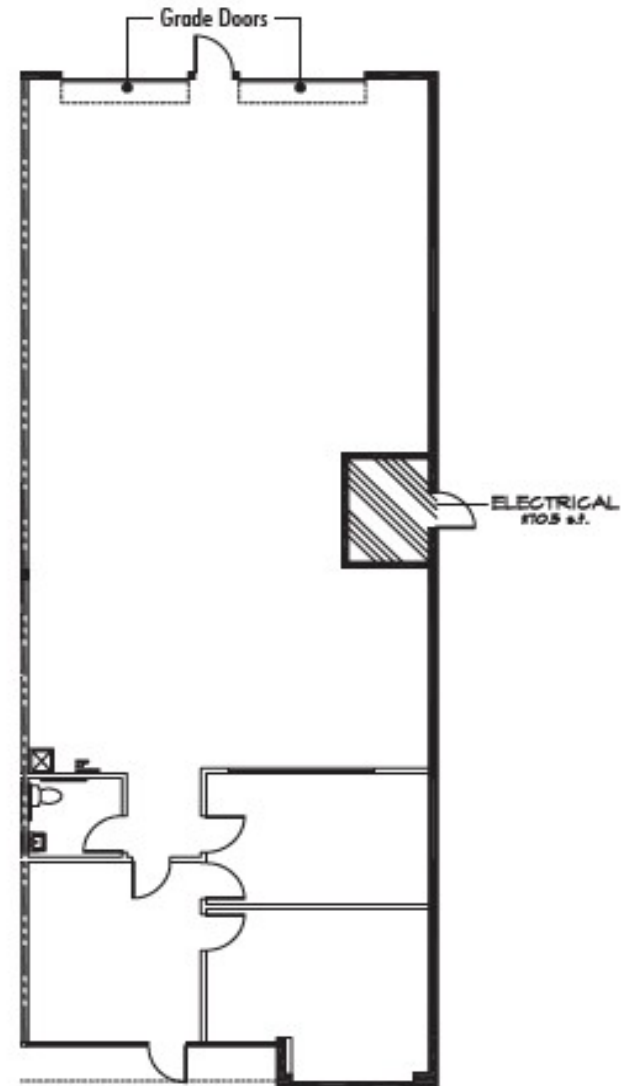
SUITE E FLOOR PLAN

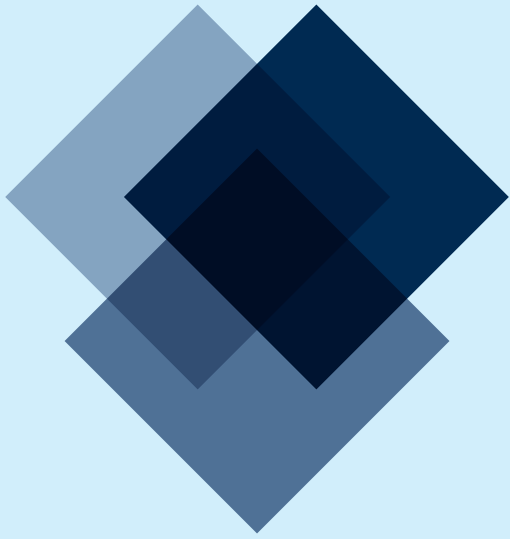
SUITE SIZE
±2,684 SF

AVAILABILITY
Now

SUBLEASE RATE
\$1.40 PSF NNN

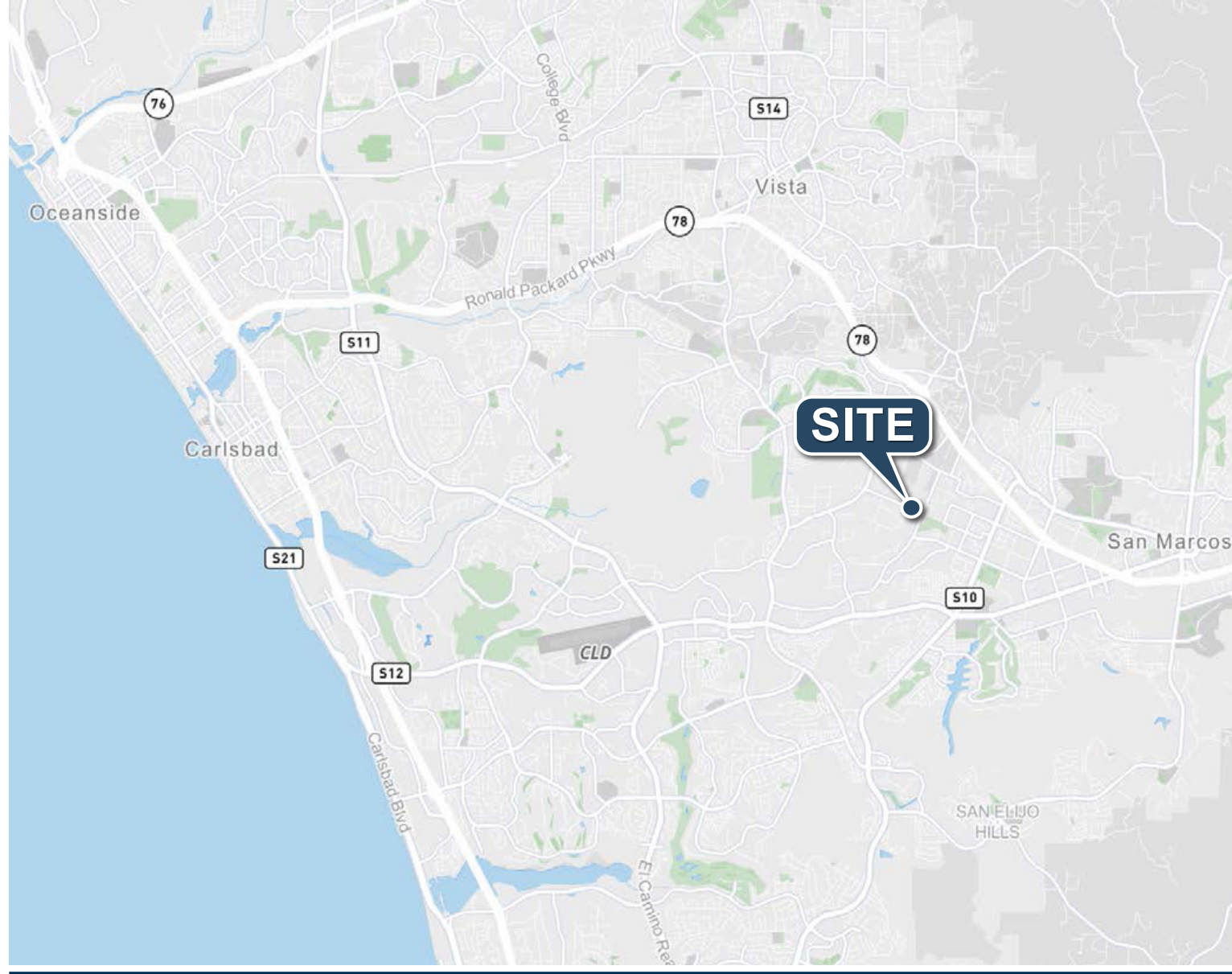
DETAILS
Master Lease Expires 05/31/2026





2780

LA MIRADA DR.
SUITE E
VISTA, CA 92081



JOSH WEST, SIOR

SENIOR VICE PRESIDENT, PARTNER

(858) 458-3358 | Lic No. 01923375 | jwest@voitco.com

4180 La Jolla Village Drive, Suite 100, La Jolla, CA 92037 | Lic #01991785 | www.voidco.com

Licensed as Real Estate Salespersons by the CA Bur of Real Estate. ©2025 Voit Real Estate Services, Inc. All Rights Reserved. The information contained herein has been obtained from sources we deem reliable. While we have no reason to doubt its accuracy, we do not guarantee it.

Voit

REAL ESTATE SERVICES