

For Lease

# West Park Mall Quesnel, BC

## LOCATION

155 Malcolm Drive  
Quesnel, BC  
V2J 3K2, Canada

## LEASING CONTACTS

ALYCIA KAMER  
Director, Commercial Leasing  
604 558 8665  
akamer@bosaproperties.com

CALLY ZERING  
Leasing Manager, Commercial  
778 357 0175  
czering@bosaproperties.com

RACHEL SANGHA  
Leasing Coordinator, Commercial  
604 416 0286  
rsangha@bosaproperties.com



**bosa  
properties**

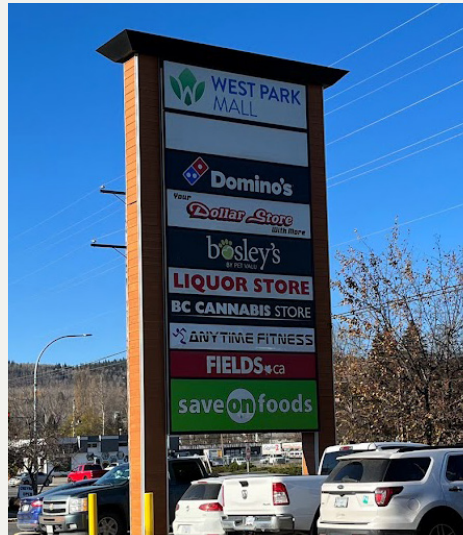
## OVERVIEW

West Park Mall is a 110,000-square foot shopping centre in the heart of Quesnel, B.C. In 2017, the shopping centre underwent a complete renovation, including updated exterior facades and store fronts, as well as update common areas.



## LOCATION

West Park Mall is located in the heart of Quesnel, B.C., a bustling city with a population of over 10,000, and at the confluence of the Fraser and Quesnel rivers. Located at the intersection of Marsh Drive and Malcolm Drive, the shopping centre features easy accessibility as well as ample on-site parking.



GROSS LEASABLE AREA

108,195 sq. ft.

YEAR BUILT

1973 (ren. 2017)

NUMBER OF UNITS

23

NUMBER OF BUSINESSES

20

ANCHOR TENANTS

- Save-on-Foods
- Fields
- Westside Liquor Store
- Anytime Fitness
- Your Dollar Store with More

OTHER OFFERINGS

- Bosley's
- Warehouse One Clothing Co.
- Lensmasters
- West Park Dental
- Alterations Unlimited
- Domino's Pizza

# West Park Mall

● Leased ● Deal Pending ● Available



## AVAILABLE UNITS

UNIT	SF	DESCRIPTION
2a	523	Improved space.
2b	681	Improved space.
6	2,840	Large open area.
Kiosk	100	Multiple locations. \$60/day.

## NET RENTAL RATE

Negotiable

## OPERATING EXPENSES

Approximately \$12.58/sf  
(2025 estimate)

## AVAILABILITY

Immediately

## ALLOWANCE

Negotiable

CONTACT

# Get in Touch

HEAD OFFICE

Bosa Properties  
1201-838 West Hastings St  
Vancouver, BC V6C 0A6

Office 604 416 0286

→ [bosaproperties.com](http://bosaproperties.com)

LEASING CONTACT

ALYCIA KAMER  
Director, Commercial Leasing  
604 558 8665  
[akamer@bosaproperties.com](mailto:akamer@bosaproperties.com)

CALLY ZERING  
Leasing Manager, Commercial  
778 357 0175  
[czering@bosaproperties.com](mailto:czering@bosaproperties.com)

RACHEL SANGHA  
Leasing Coordinator, Commercial  
604 416 0286  
[rsangha@bosaproperties.com](mailto:rsangha@bosaproperties.com)

