



For Lease

WATCH THE VIDEO

Landmark West Hollywood Creative Office

7920 Sunset Blvd. | Los Angeles, CA 90046

Home to the Directors Guild of America, this iconic building now has up to 16,031 RSF of creative office space available. The building is centrally located with numerous walkable amenities, on-site parking, and three private state of the art film and digital video projection theaters accommodating 38-600 seats.

Nicole Mihalka
+1 323 788 3969
nicole.mihalka@cbre.com
License # 01322414

Dana Vargas
+1 213 239 6121
dana.vargas@jll.com
License # 01943620



Screening Rooms

Home to the Directors Guild of America, this iconic building features three private state-of-the-art film and digital video projection theaters (38-seat, 155-seat, and 600-seat).



Move-In-Ready Condition

Property Specifications



Available

±4,762 RSF – Suite 100
±11,316 RSF – Suite 200



Features

Recently renovated lobby, outdoor patio area, plug and play creative office space in one of WeHo's most highly regarded buildings.



Rate

\$3.85/SF/Month FSG



Parking

2:1,000 in subterranean parking structure. Additional parking can be made available in adjacent structure.



Delivery

Available now



Location

Located on the famous Sunset Strip, 7920 W. Sunset is walking distance to Laemmle Theaters, Sushi Dan, Coffee Bean & Tea Leaf, Greenblatt's Delicatessen, Crunch Gym, Bristol Farms, Trader Joe's, Starbucks, and much more.



Term

Negotiable



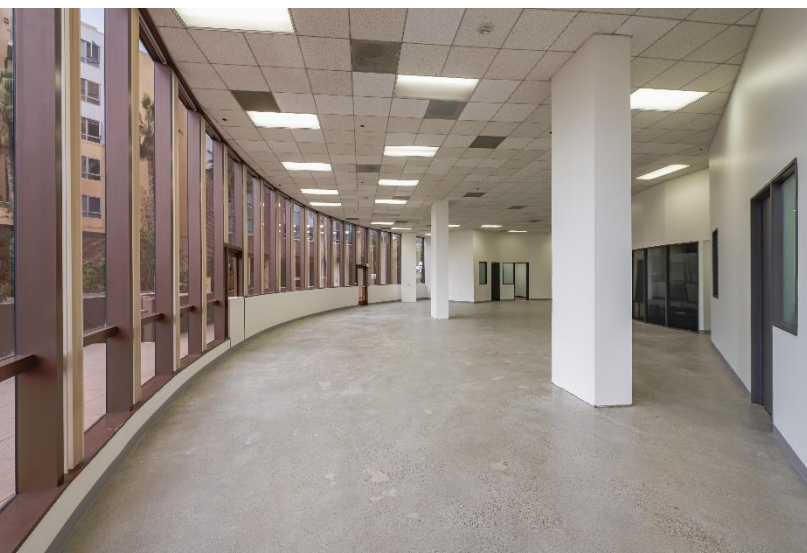
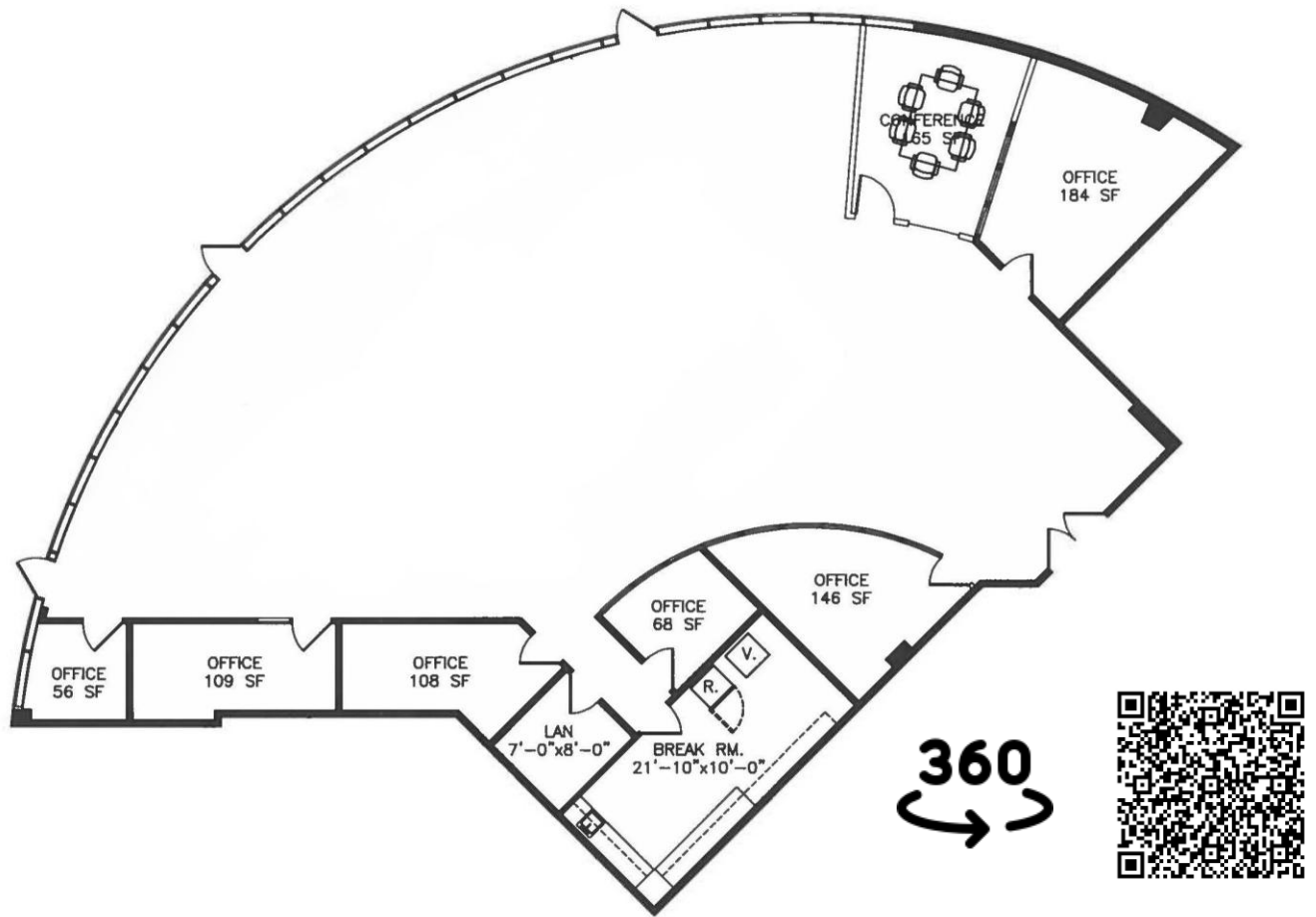
Suite 100

Size: ±4,792 RSF

Asking Rate: \$3.85/SF/Month FSG

Available: Now

Features: Move-in ready space with above standard ceilings heights and window line, floor to ceiling glass, and direct access to the outdoor patio.



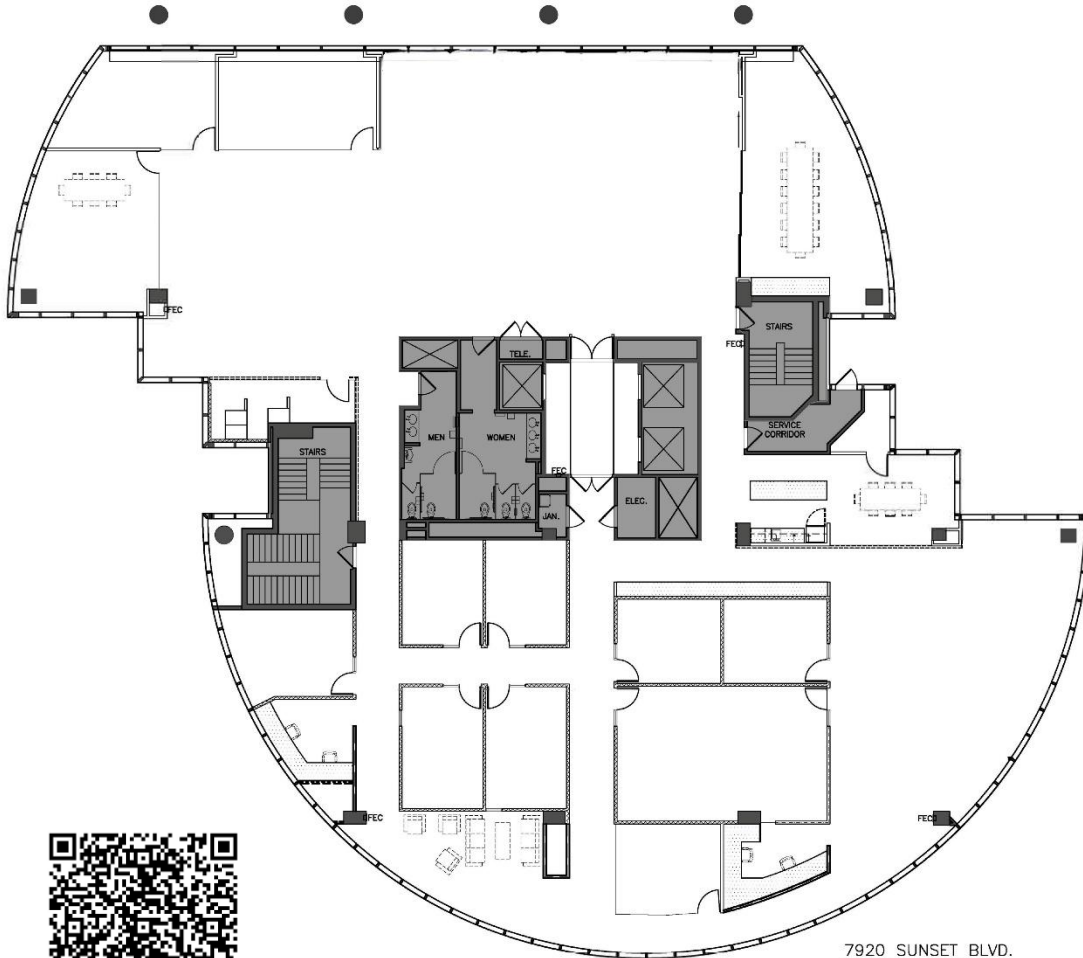
Suite 200

Size: ±11,331 RSF

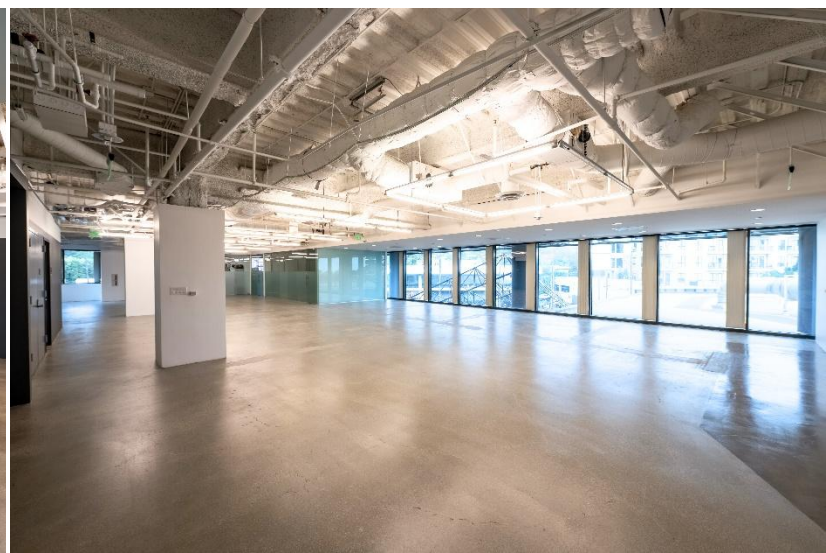
Asking Rate: \$3.85/SF/Month FSG

Available: Now

Features: Move-in ready, full floor of creative office space with post-production rooms, natural light and views of the Hollywood Hills.



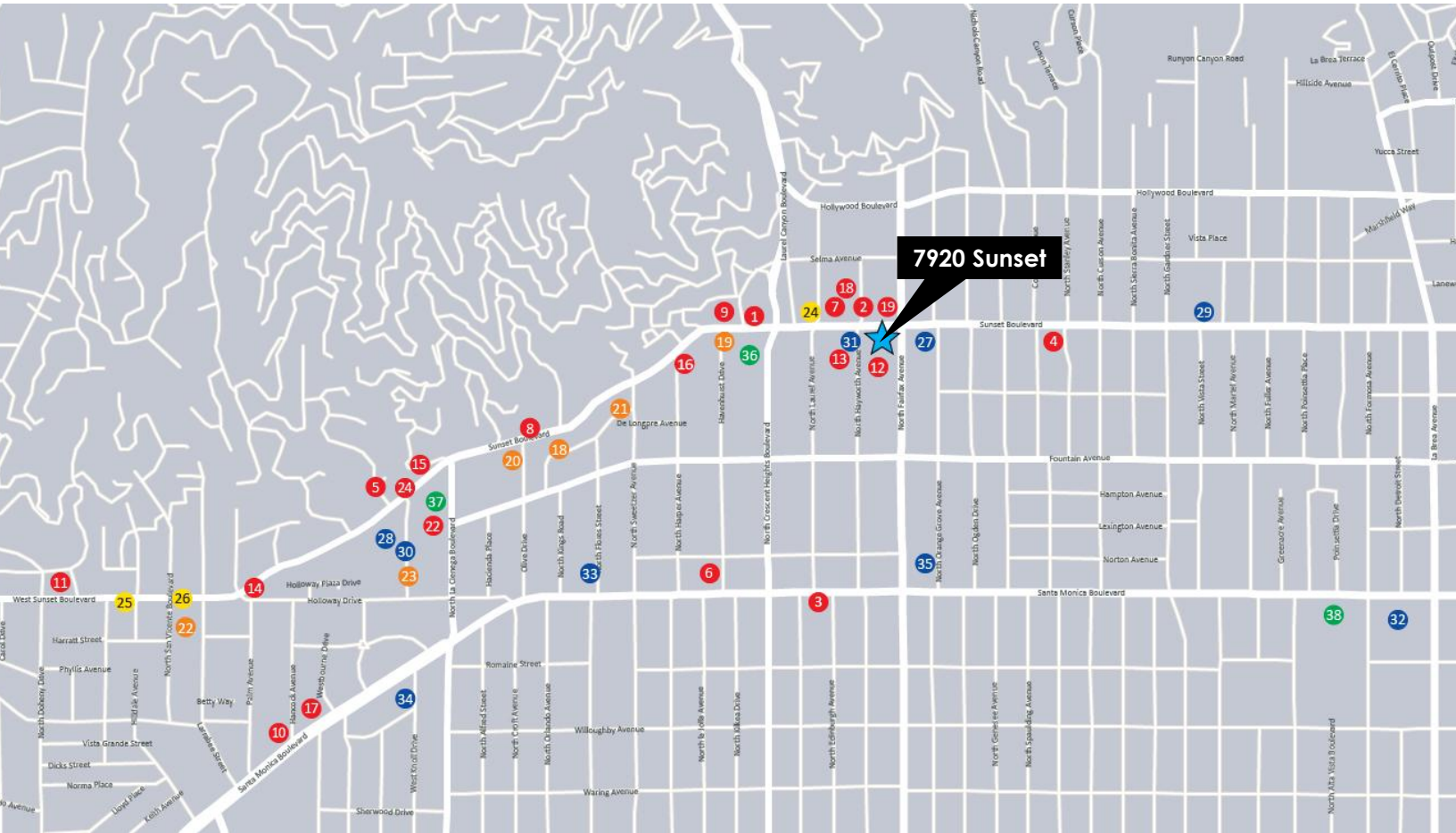
7920 SUNSET BLVD.
SECOND FLOOR
LOS ANGELES, CA 90046





Nearby Amenities

Located on the famous Sunset Strip, 7920 W. Sunset is walking distance to Laugh Factory, Chateau Marmont, Pizzeria Vivoli, Starbucks, Patty Boys, Bristol Farms, Trader Joe's, and much more.



8000 SUNSET

Salon Republic
CB2
Crunch
Landmark Theatre
Wokcano
Trader Joe's
Jojo's Mediterranean Grill
Crave Café

RESTAURANTS

1. Bar Marmont
2. Zankou Chicken
3. Laurel Hardware
4. Chipotle
5. Coffee Bean & Tea Leaf
6. Connie and Ted's
7. Hyde
8. Katana

9. Pinches Tacos
10. Tender Greens
11. Night+Market
12. The Griddle
13. Pizzeria Vivoli
14. State Social House
15. Mel's Diner
16. Galerie on Sunset
17. Ospero
18. Starbucks
19. Patty Boys

HOTEL

18. Andaz Hotel
19. Chateau Marmont
20. The Mondrian
21. The Sunset Tower Hotel
22. The London
23. Sunset Marquis

ENTERTAINMENT

24. Laugh Factory
25. The Roxy
26. Whiskey a Go Go

RETAIL/OTHER

27. Bristol Farms
28. Equinox
29. Guitar Center
30. Oliver Peoples
31. Wells Fargo
32. Target
33. Gelson's
34. Trader Joe's
35. Whole Foods

DEVELOPMENTS

36. Townscape Partners development
37. Sunset La Cienega
38. The Lot



For leasing information, **contact**

Nicole Mihalka
+1 323 788 3969
nicole.mihalka@cbre.com
License # 01322414

Dana Vargas
+1 213 239 6121
dana.vargas@jll.com
License # 01943620

Jones Lang LaSalle Brokerage, Inc.
515 S Flower Street, Suite 1300
Los Angeles, CA 90071
Brokerage License # 01856260