

500

EAST
COLORADO ST

GLENDALE, CA 91205



NEWLY CONSTRUCTED MEDICAL OFFICE SPACE FOR LEASE

CBRE

BUILDING HIGHLIGHTS



NEW CLASS A MEDICAL
OFFICE CONSTRUCTION



5 TO 10 YEAR
LEASE TERM



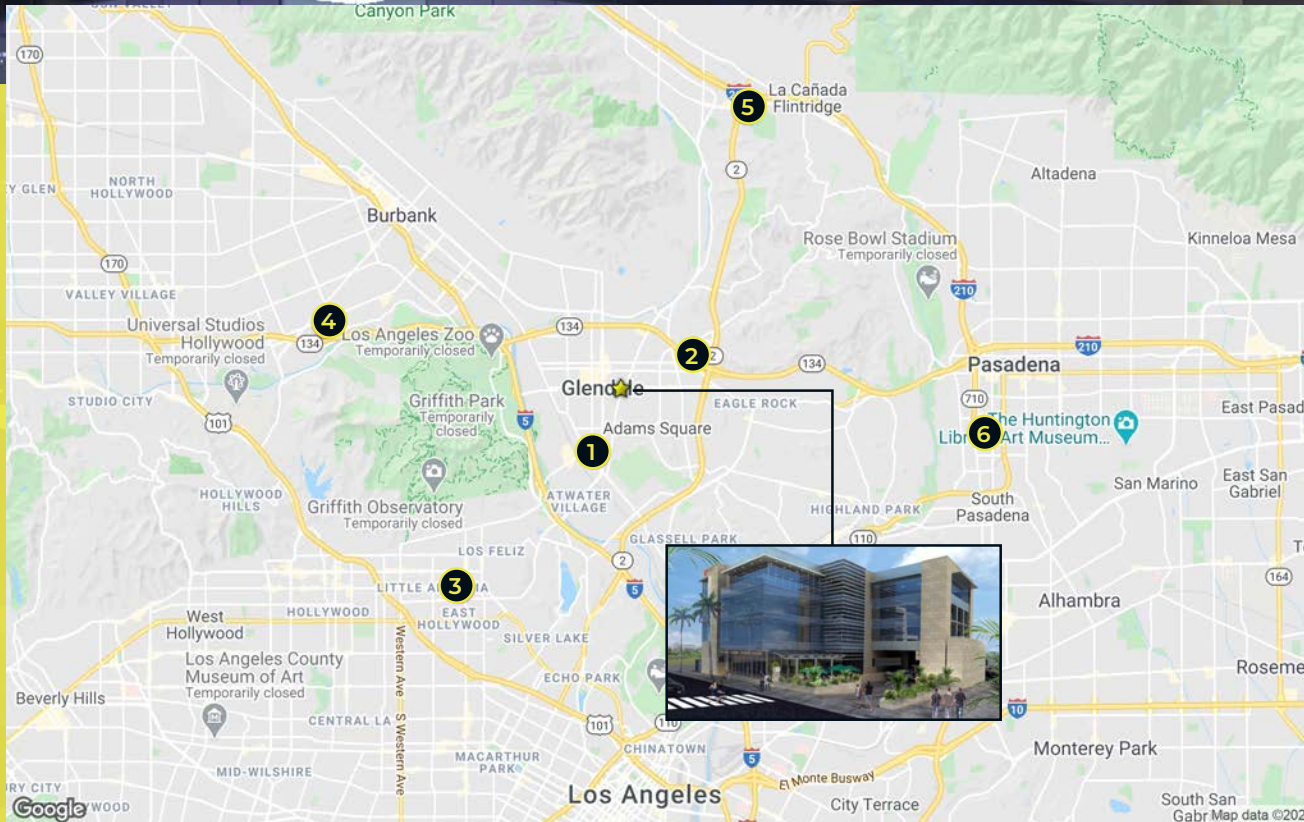
CLOSE PROXIMITY TO
THE 5 AND 134 FWYS



4/1,000
PARKING RATIO



MONUMENT SIGNAGE
AVAILABLE WITH PRIME
COLORADO ST. FRONTAGE

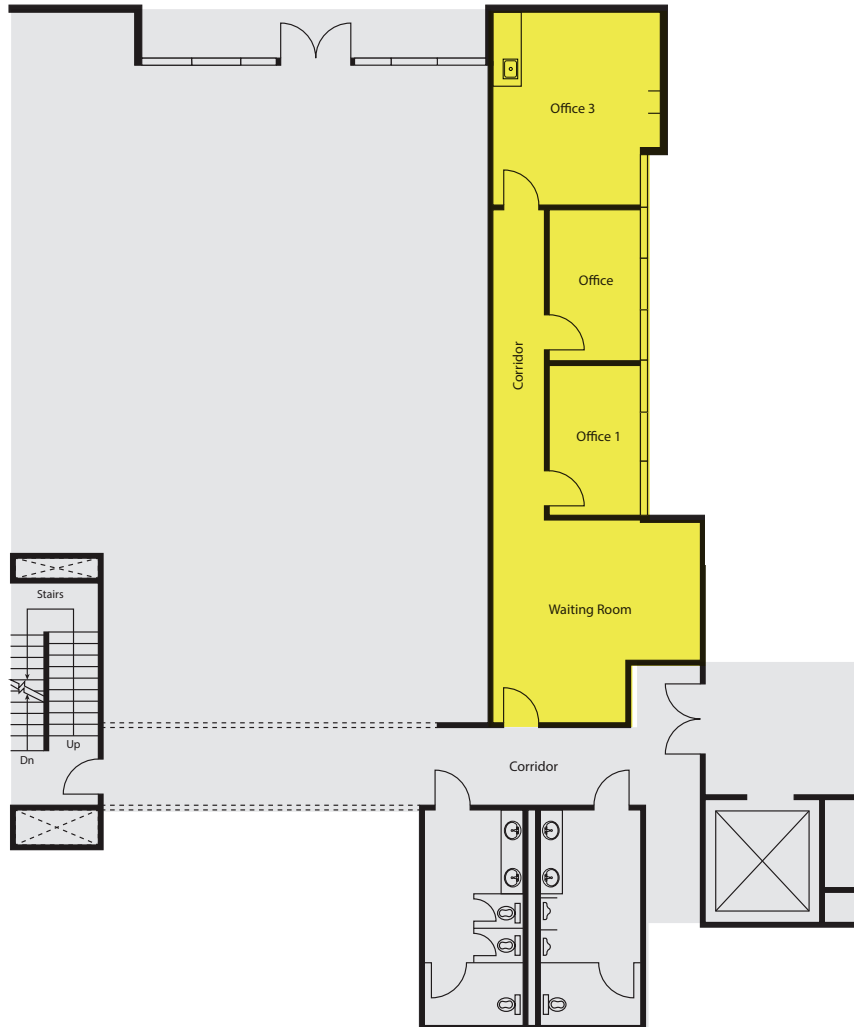


NEARBY HOSPITALS

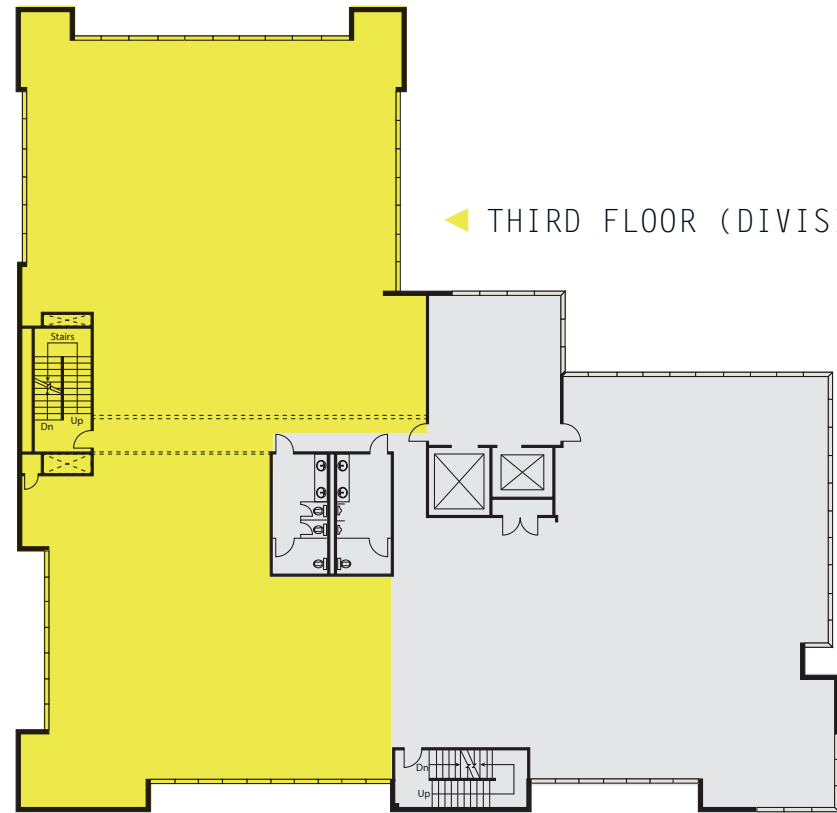
1	Glendale Memorial Hospital	1.3 Miles
2	Adventist Health Glendale	1.6 Miles
3	Kaiser Permanente	5.0 Miles
4	Providence Health	5.9 Miles
5	USC Verdugo Hills Hospital	6.6 Miles
6	Huntington Hospital Pasadena	7.6 Miles

FLOOR PLANS

▼ SECOND FLOOR



▼ THIRD FLOOR (DIVISIBLE)



AVAILABILITIES

Second Floor

920 RSF

[CLICK TO VIEW VIRTUAL TOUR](#)



Second Floor

400 RSF

Third Floor

6,000 RSF

[CLICK TO VIEW VIRTUAL TOUR](#)





Angie Weber

Lic. 01015031

+1 818 502 6750

angie.weber@cbre.com

Dana Nialis

Lic. 01947265

+1 818 502 6774

dana.nialis@cbre.com

CBRE

© 2025 CBRE, Inc. All rights reserved. This information has been obtained from sources believed reliable, but has not been verified for accuracy or completeness. You should conduct a careful, independent investigation of the property and verify all information. Any reliance on this information is solely at your own risk. CBRE and the CBRE logo are service marks of CBRE, Inc. All other marks displayed on this document are the property of their respective owners, and the use of such logos does not imply any affiliation with or endorsement of CBRE.