

FOR LEASE

±21,105 SF TILT-UP WAREHOUSE BUILDING
3612 KURTZ STREET, SAN DIEGO, CA 92110



SITE



KURTZ STREET

HANCOCK STREET

GREENWOOD STREET

CAMINO DEL RIO WEST

REX A. HUFFMAN
Lic. #00648675 | 619.840.2943 | rhuffman@voitco.com

Voit
REAL ESTATE SERVICES

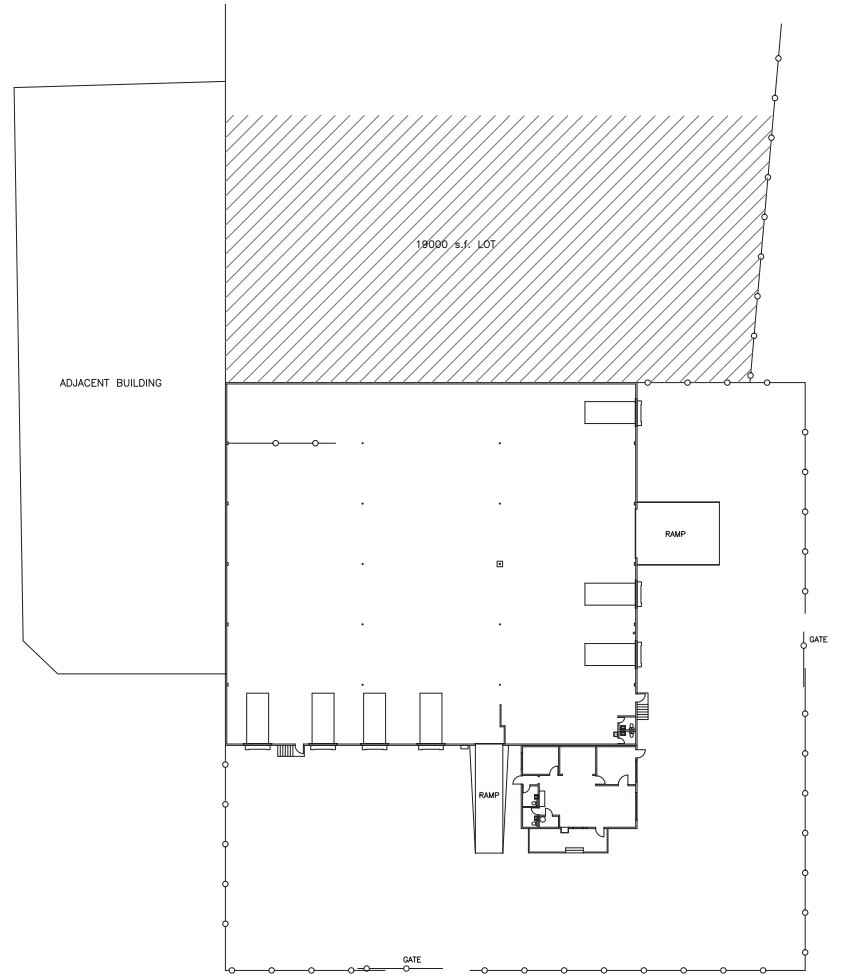
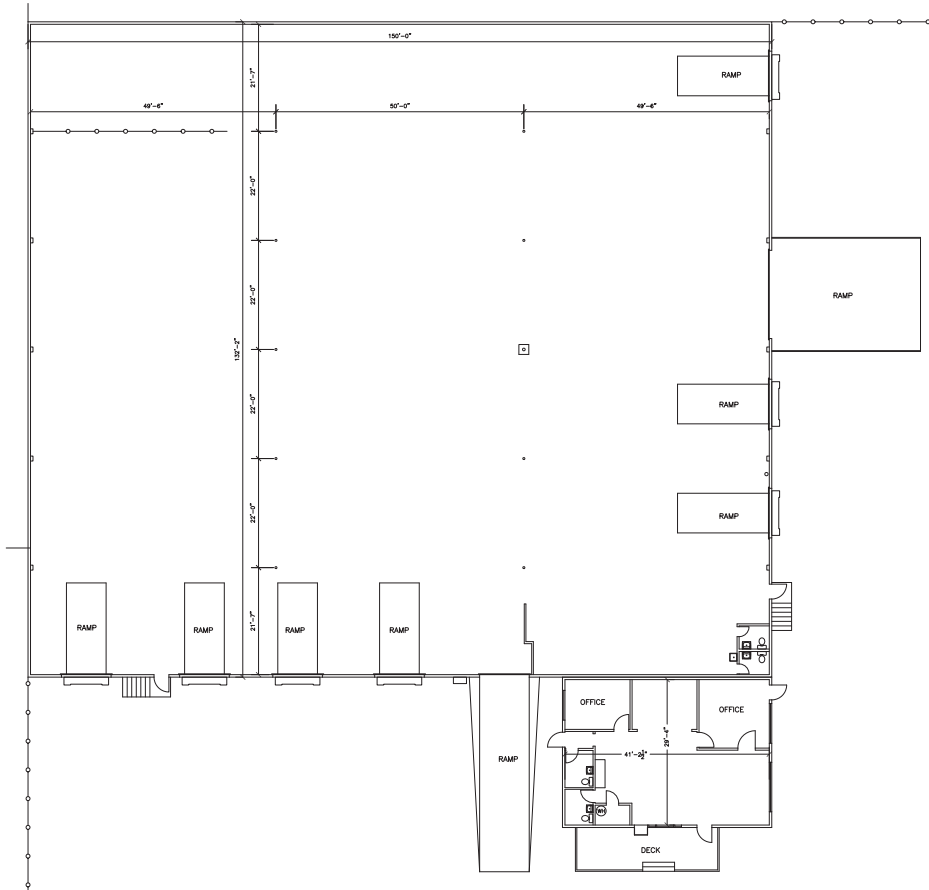
PROPERTY FEATURES

- » ±21,105 SF tilt-up warehouse building for lease
- » ±1,280 SF of open office area
- » ±23,500 SF fenced and secured yard
- » 9 dock high & ramped doors
- » 18' clear height
- » 220 V 3-Phase power
- » CC-3-8 zoning ([View Zoning](#))
- » Sprinklered facility
- » Gas service
- » Skylights throughout
- » **Lease Rate: \$1.39/SF NNN**
(taxes, maintenance and insurance ±\$0.40/SF)



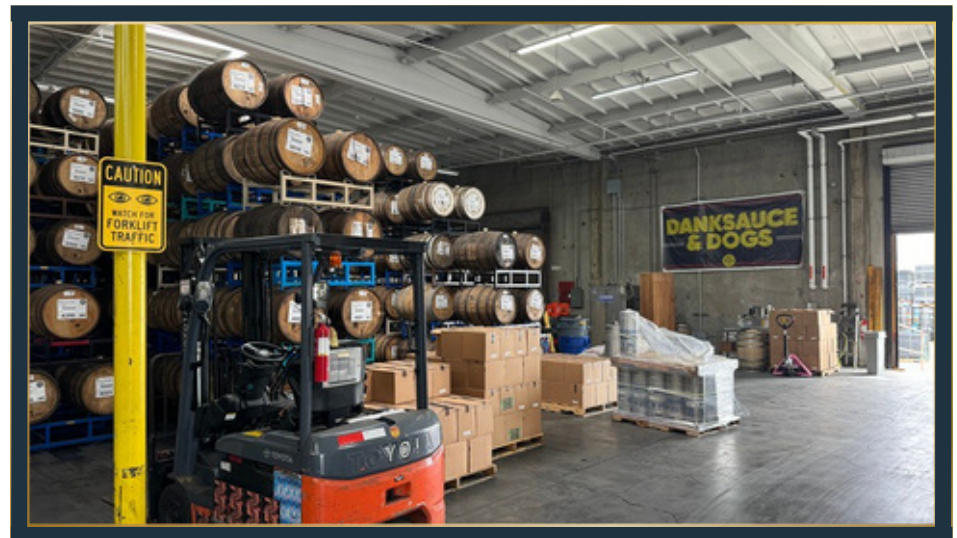
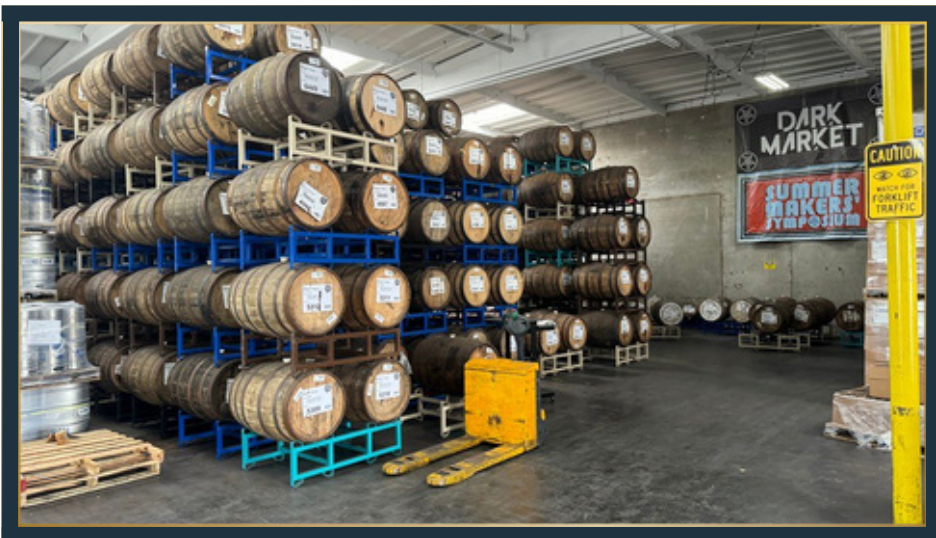
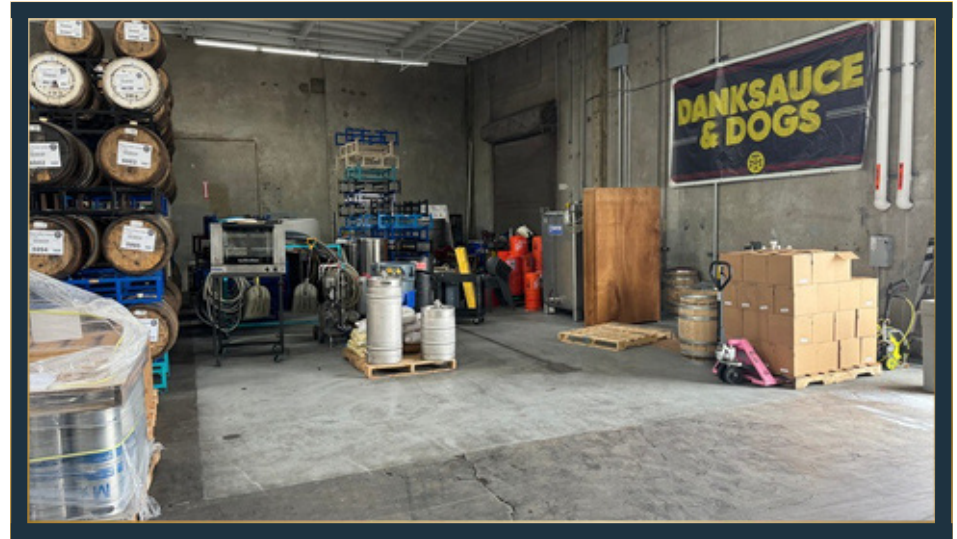
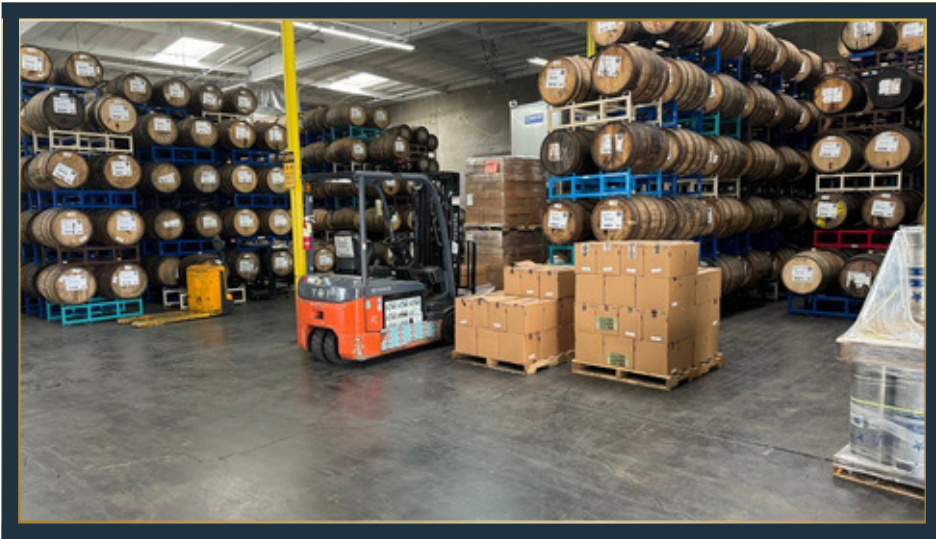
Contact agent for touring instructions

FLOOR AND SITE PLAN



KURTZ

NOT TO SCALE



REX A. HUFFMAN, Senior Vice President
619.840.2943 | rhuffman@voitco.com | Lic. #00648675

4180 La Jolla Village Drive, Suite 100, La Jolla, CA 92037 | 858.453.0505 | Lic #01991785 | www.voitco.com

Licensed as a Real Estate Salesperson by the DRE. The information contained herein has been obtained from sources we deem reliable. While we have no reason to doubt its accuracy, we do not guarantee it. ©2025 Voit Real Estate Services. All Rights Reserved.

Voit
REAL ESTATE SERVICES