

ADAM CLAYTON  
**2108**  
POWELL BOULEVARD

CBRE

*Alhambra*



## Availability

Entire 5th floor 13,500 RSF

Entire 4th floor 13,500 RSF

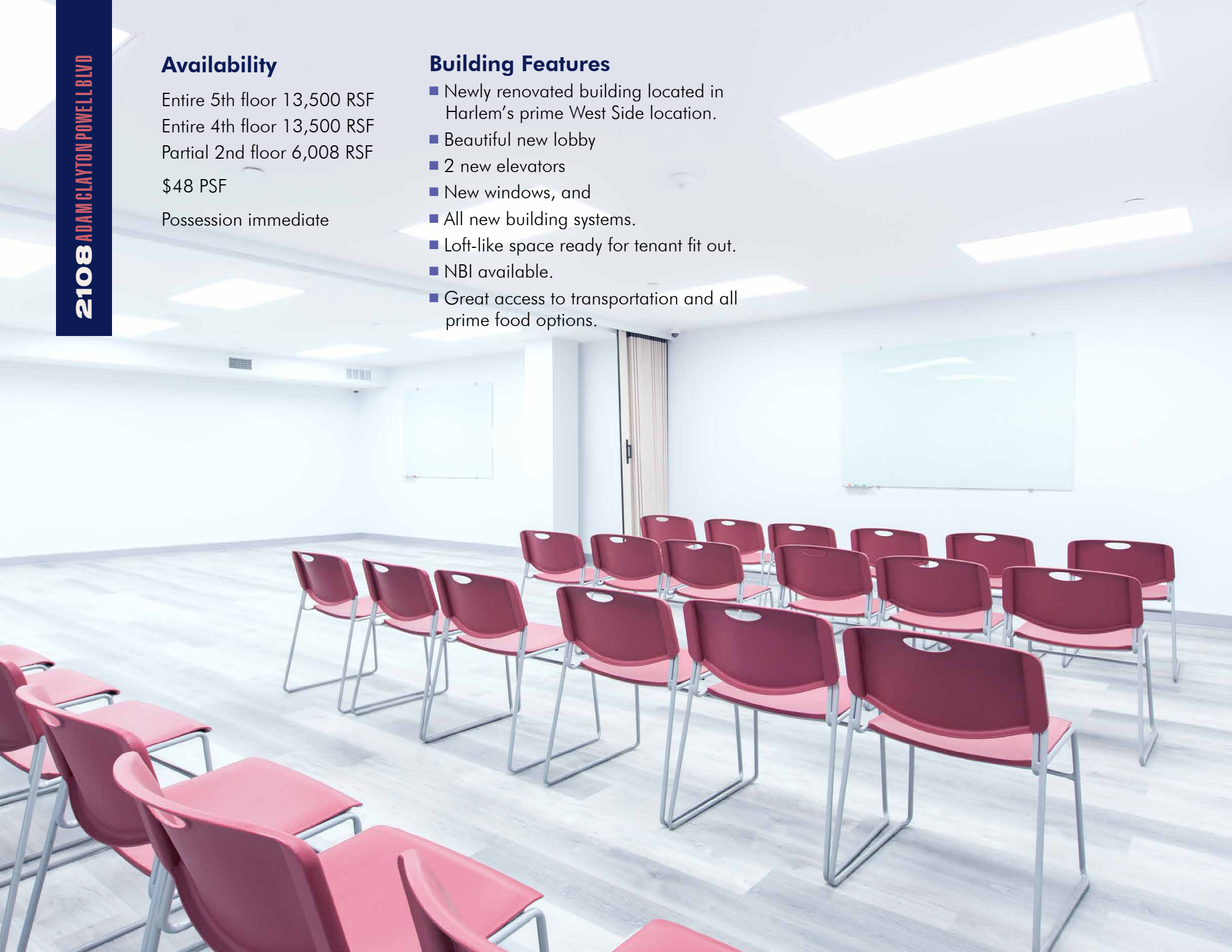
Partial 2nd floor 6,008 RSF

\$48 PSF

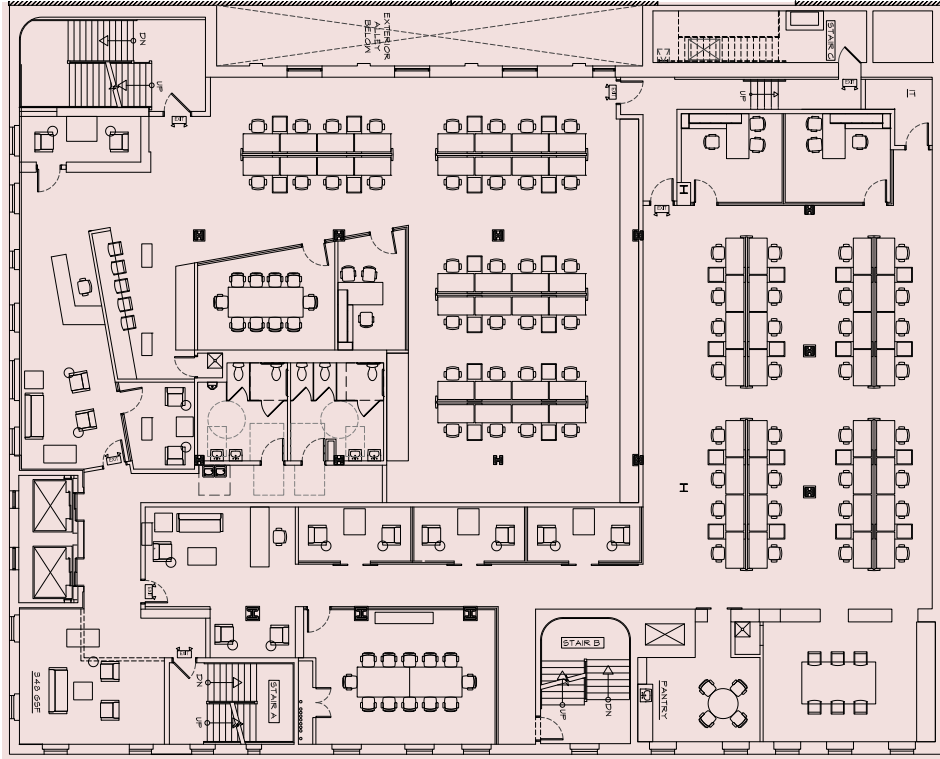
Possession immediate

## Building Features

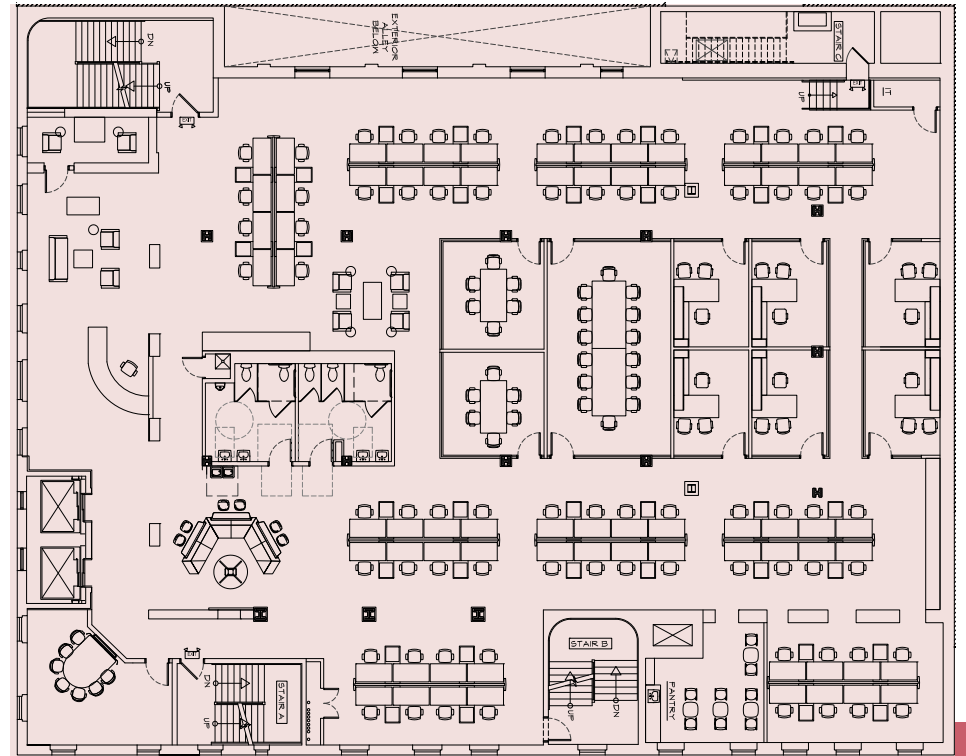
- Newly renovated building located in Harlem's prime West Side location.
- Beautiful new lobby
- 2 new elevators
- New windows, and
- All new building systems.
- Loft-like space ready for tenant fit out.
- NBI available.
- Great access to transportation and all prime food options.



## Test Fit – Two Tenants FOURTH FLOOR

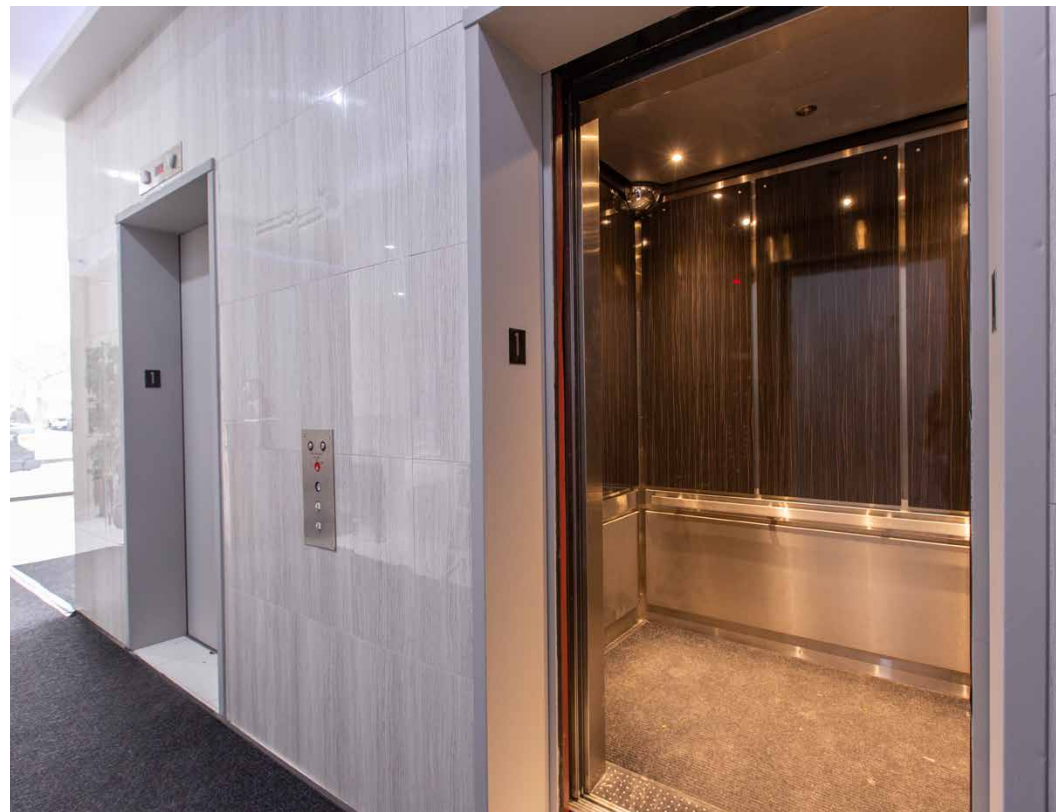
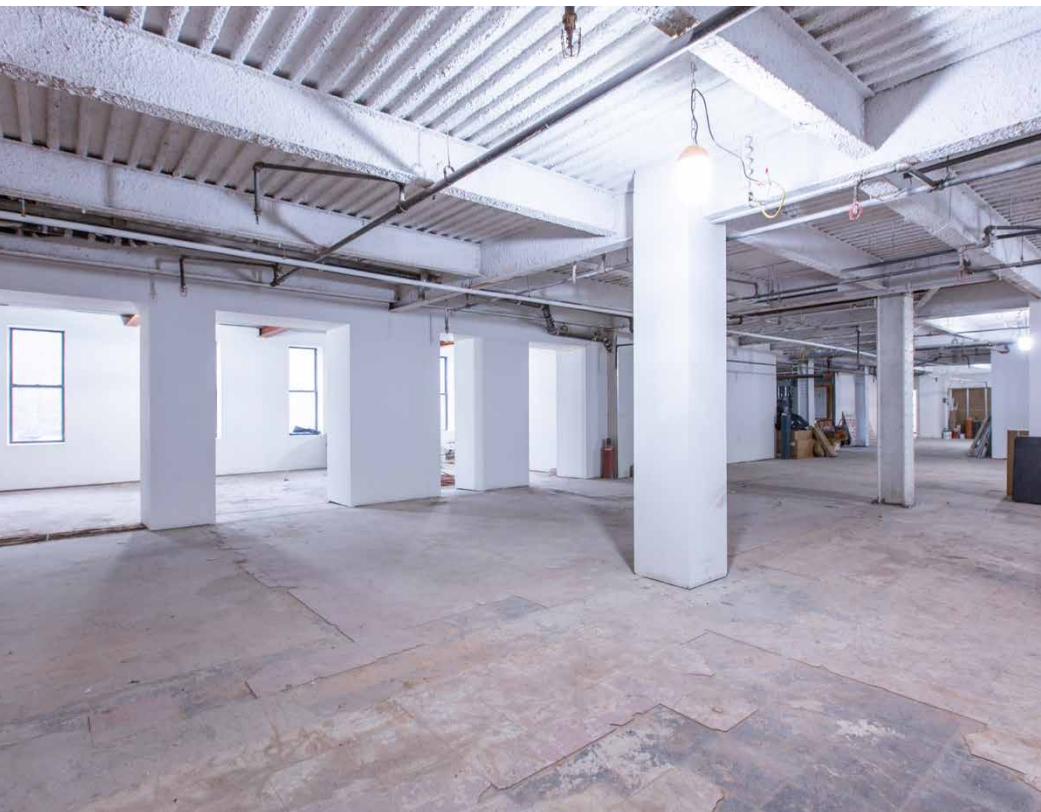


## Test Fit – One Tenant FOURTH FLOOR





2108 ADAM CLAYTON POWELL BLVD



**Paul Walker**

+1 212 984 7117

paul.walker@cbre.com

**Brad Cohen**

+1 646 374 8575

brad.cohen@cbre.com

**CBRE**

© 2020 CBRE, Inc. All rights reserved. This information has been obtained from sources believed reliable, but has not been verified for accuracy or completeness. You should conduct a careful, independent investigation of the property and verify all information. Any reliance on this information is solely at your own risk. CBRE and the CBRE logo are service marks of CBRE, Inc. All other marks displayed on this document are the property of their respective owners, and the use of such logos does not imply any affiliation with or endorsement of CBRE.



ADAM CLAYTON POWELL

· 2108 ·

BOULEVARD HARLEM

CBRE