

Office Available For Lease

2345 Stanfield Road

Mississauga, ON



Lennard:

Here is where your business will *grow*.

lennard.com

2345 Stanfield Road

East side of Stanfield Road and just North of Queensway E



Available Space

Suite 201: 1,319 SF

Suite 400: 10,207 SF



Available

Immediate



Asking Rate

\$5.00 PSF

\$1.00 PSF annual increases

Additional Rate (2026 Estimate)

\$16.40 PSF

(Excludes janitorial services)

Property Highlights

- Built out suites
- Easy access to QEW and Highway 10
- Close to major highways
- Serviced by Mississauga public transit
- Restaurant on site
- Surface and covered parking at no charge
- Building Signage available for a full floor user



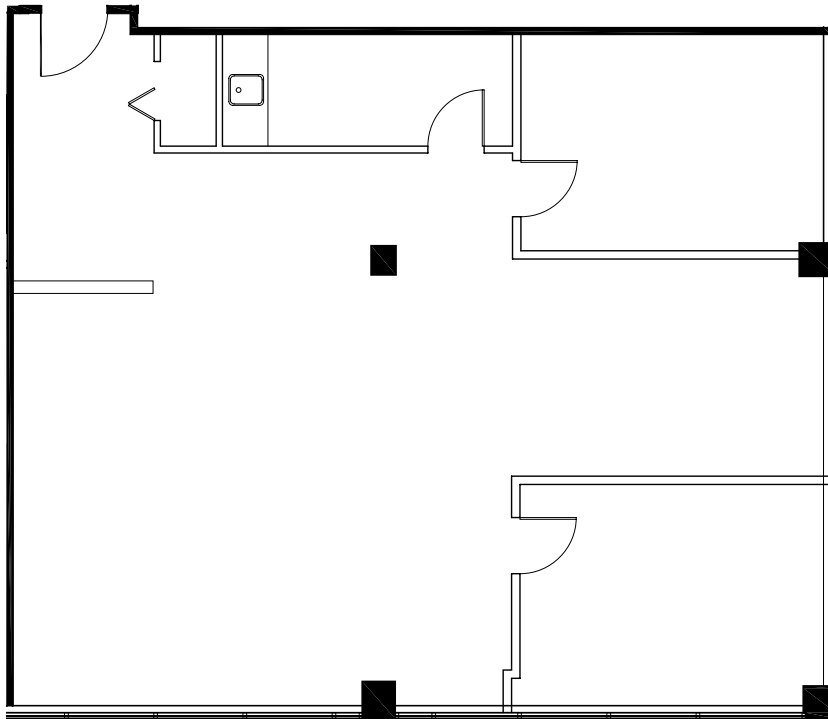
Lennard:

Joni Blanshard*, Vice President
905.247.9231 • jblanshard@lennard.com

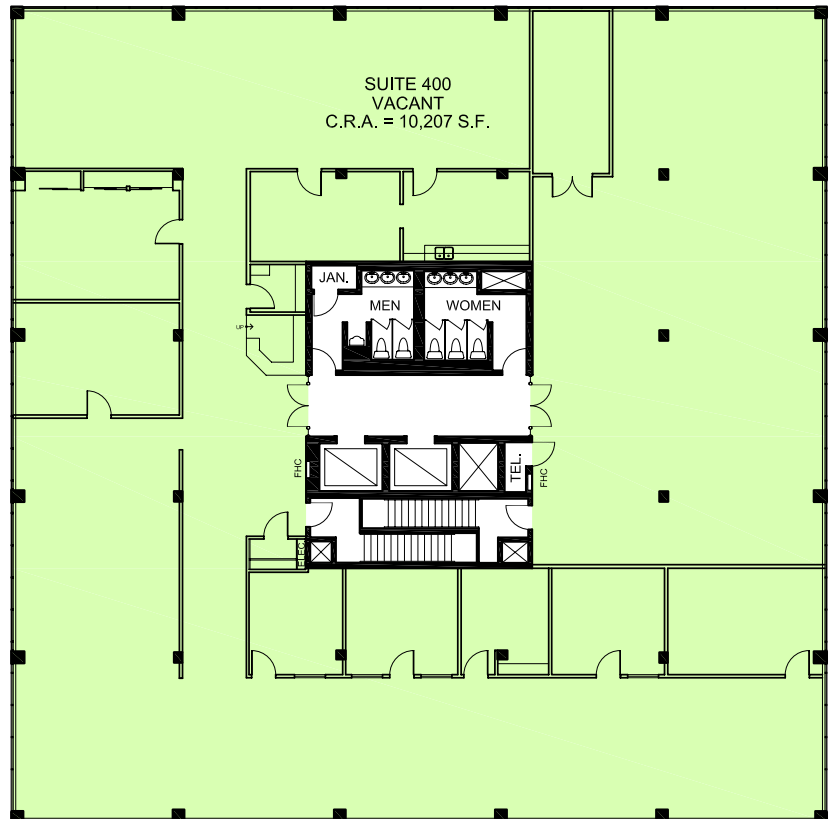
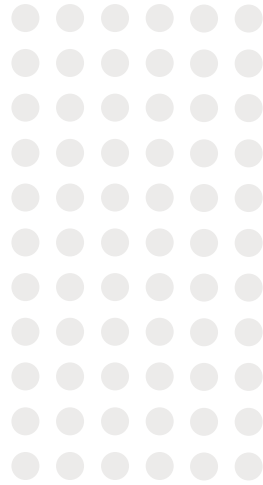
*Sales Representative

lennard.com

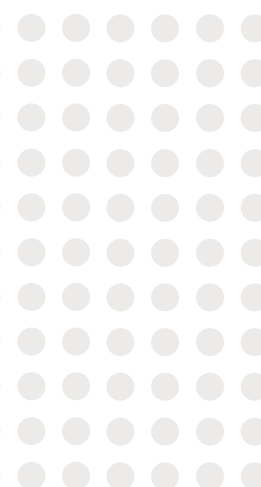
2345 Stanfield Road



Floor Plan
Suite 201
1,319 SF



Floor Plan
Suite 400
10,207 SF



Lennard:

Joni Blanshard*, Vice President
905.247.9231 • jblanshard@lennard.com

*Sales Representative

lennard.com

Lennard:

Joni Blanshard*, Vice President

905.247.9231

jblanshard@lennard.com

602-350 Burnhamthorpe Road W, Mississauga

905.625.5020

lennard.com

*Sales Representative

Statements and information contained herein are based on information furnished by principals and sources we deem reliable; however, we make no representation or warranty as to the accuracy, completeness or current status of such information and assume no responsibility for any errors, omissions, or misstatements. All information should be independently verified by the recipient. Lennard Commercial Realty, Brokerage.