

Sandalwood Court



TYTHERINGTON
BUSINESS VILLAGE

Macclesfield's leading business village

SELF-CONTAINED BUILDING

Suitable for a variety of uses including lab & office space

19,623 SQ.FT. (1,823 SQ.M.)

Fernbank House

Greenway House

Hazelwood House

Laurel House

Oakfield House

Peaksid House

Pinewood Court

Redwood Court

Sandalwood Court

Springwood Court

Sycamore House

Alder Court

Alderley Court

Ashwood Court

Beechwood Court

Birchwood House

Elmwood Court





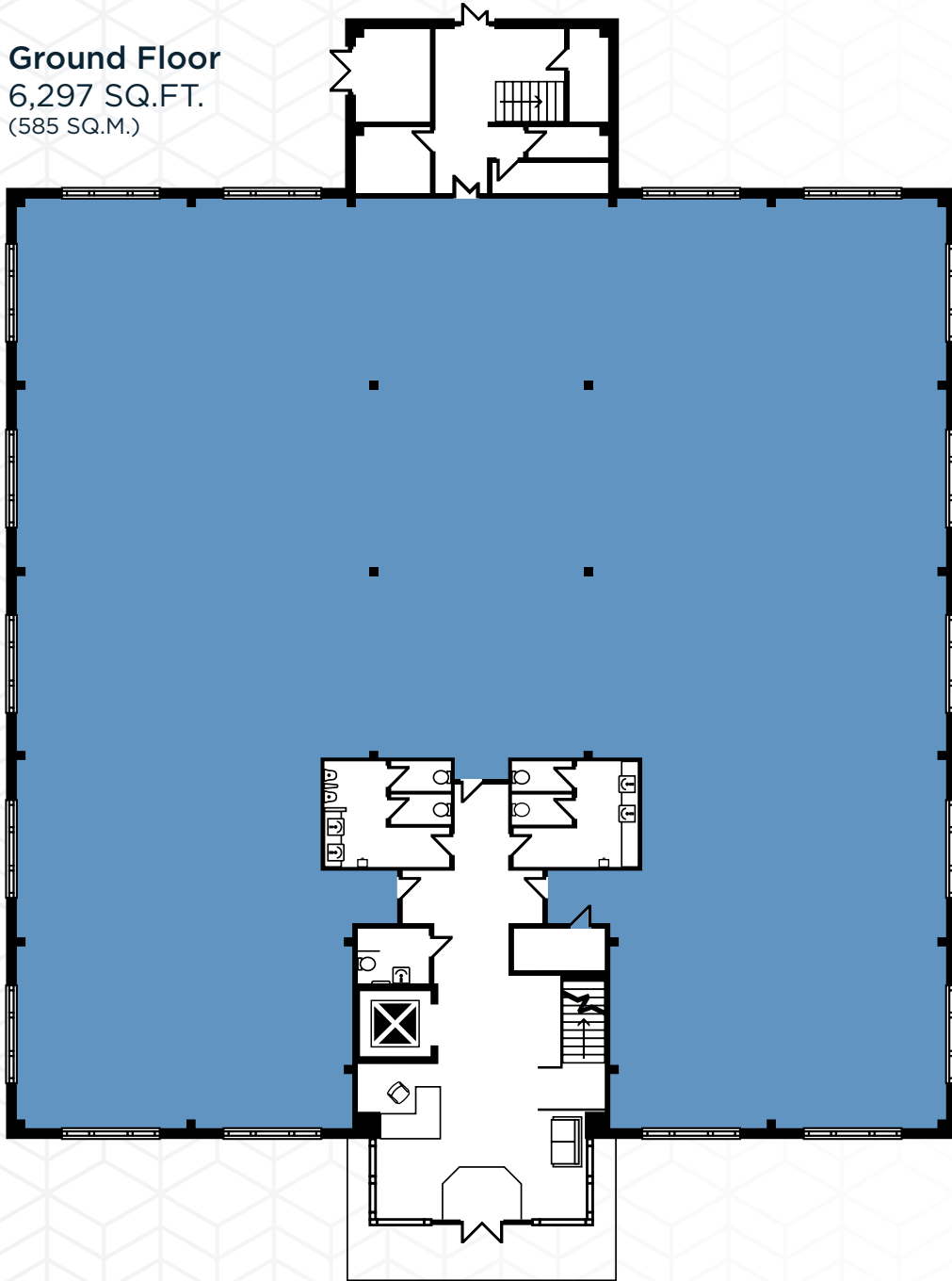
SANDALWOOD COURT



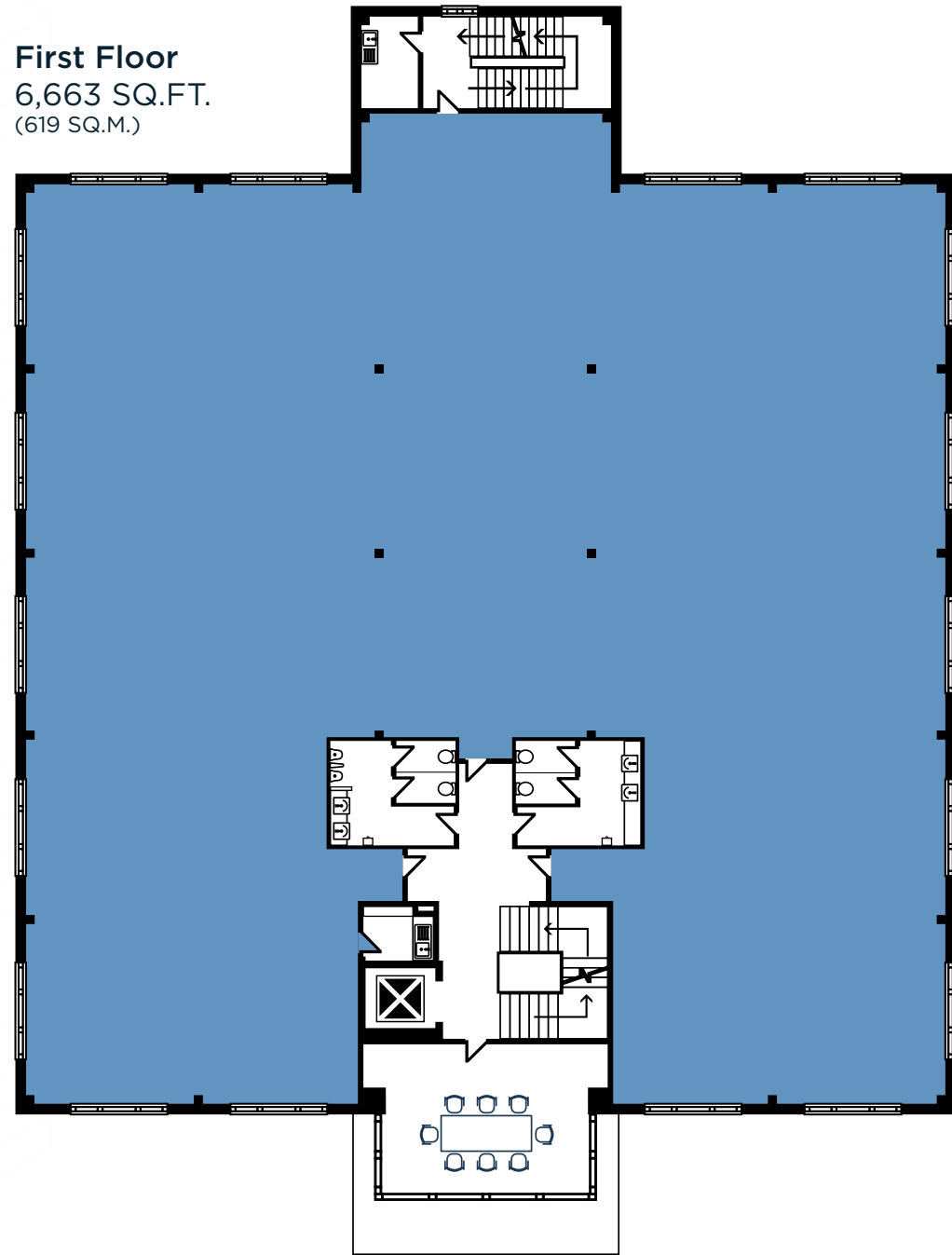
TYTHERINGTON
BUSINESS VILLAGE

Macclesfield's leading business village

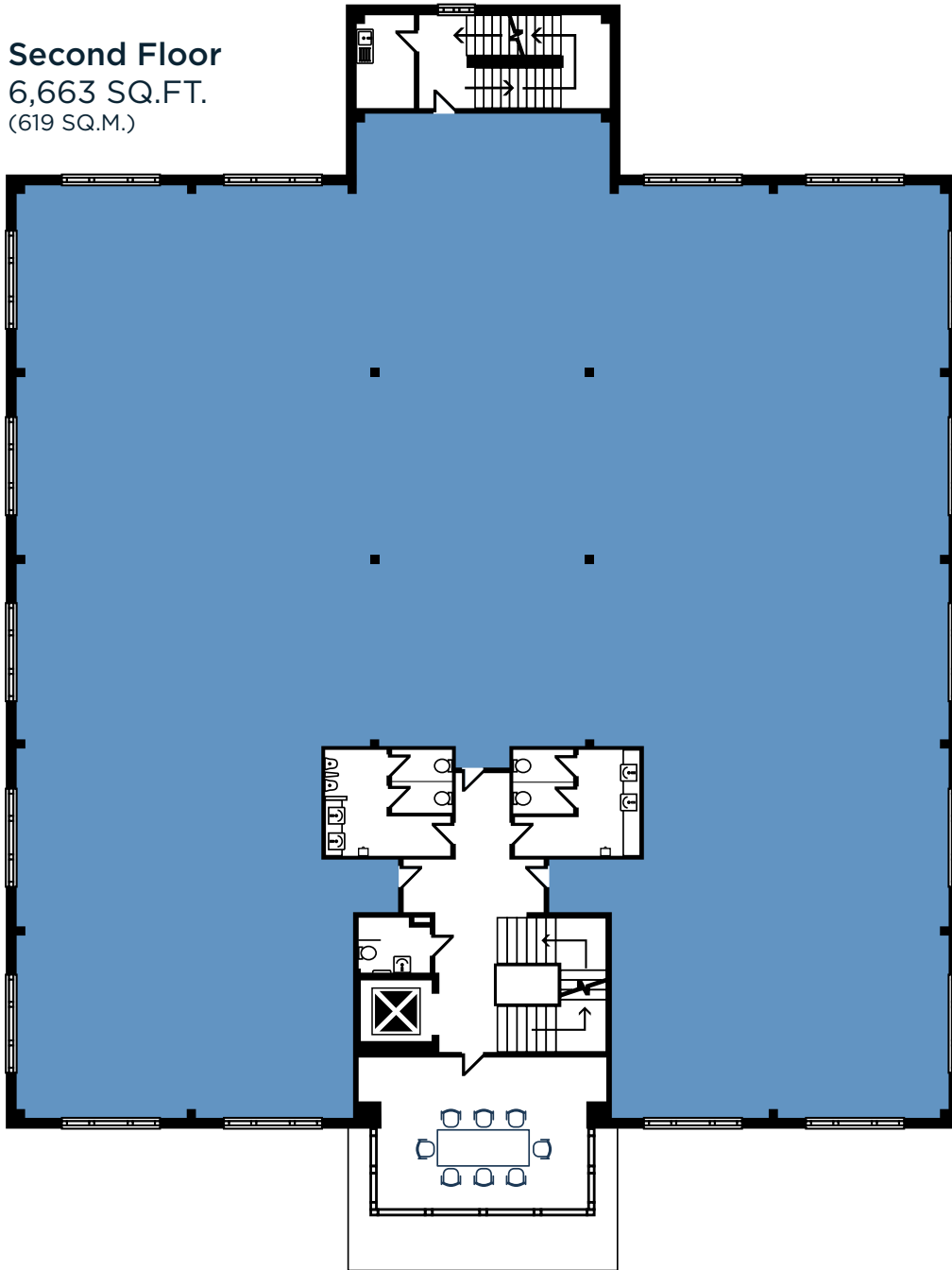
Ground Floor
6,297 SQ.FT.
(585 SQ.M.)



First Floor
6,663 SQ.FT.
(619 SQ.M.)



Second Floor
 6,663 SQ.FT.
 (619 SQ.M.)



AVAILABILITY

DESCRIPTION

Positioned at the rear of the business park, Sandalwood Court benefits from on-site parking and secure barrier entry, ensuring both convenience and security for staff and visitors.

The central glazed façade defines the front elevation, providing natural light and a professional setting for the meeting rooms located on the first and second floors, which overlook the entrance.

Offering flexible internal layouts, Sandalwood Court is ideally suited as a headquarters building but is equally appropriate for a range of alternative uses, including office or laboratory space.

GROUND	6,297 SQ.FT.	585 SQ.M.
FIRST	6,663 SQ.FT.	619 SQ.M.
SECOND	6,663 SQ.FT.	619 SQ.M.
TOTAL	19,623 SQ.FT.	1,823 SQ.M.

OFFICE SPECIFICATIONS



24-Hour Access



Fully Accessible
 Raised Floors



Suspended Ceiling



Air-conditioned



Shower Facilities



Open Plan Layout

A PLACE TO GROW YOUR BUSINESS

DESCRIPTION

Sandalwood Court is a three-storey office building located in a secluded part of Tytherington Business Village and benefits , set in a secluded part of the scheme and benefiting from on-site parking and secure barrier entry.

The well-presented property features 2 meeting rooms, both in a prominent position at the front of the building and would be well suited as an HQ building.

YOU'LL BE IN GOOD COMPANY

Alderley Analytical

PEAK PROTEINS
A SIGNATURE DISCOVERY BUSINESS










BIOSCRIPT GROUP



TYTHERINGTON BUSINESS VILLAGE OCCUPIERS ARE PART OF AN EMERGING AND GROWING LIFE SCIENCE SECTOR - PLEASE SEE OUR LIFE SCIENCE BROCHURE FOR MORE DETAILS



BUSINESS VILLAGE BENEFITS

-  Secure Bike Storage
-  100% Renewable Electricity
-  Landscaped Grounds with Walking Routes
-  On-site Parking
-  Outdoor Seating Area
-  Regular Events
-  Nursery
-  Premier Inn hotel & Beefeater Pub
-  Café



TYTHERINGTONBUSINESSVILLAGE.CO.UK
WORK — CONNECT — DISCOVER

We're proud of the service we offer our customers and we love to go the extra mile. Here at Tytherington Business Village, our on-site events are a key part of building customer engagement. Throughout the year we run yoga and well-being classes, food trucks and networking events.

OCCUPIERS FIT OUT AT TYTHERINGTON BUSINESS VILLAGE







BEAUTY AND CONVENIENCE ON YOUR DOORSTEP

Combining its rural charm with easy connectivity to key destinations such as London Euston and Manchester Airport, Macclesfield is ideally placed for business.

Just two miles from Tytherington Business Village is Macclesfield town centre, boasting a mainline train station, bus station, and a variety of high street stores such as Costa Coffee, Caffè Nero, and Pizza Express. Macclesfield also benefits from independent retailers such as Salvatore's, Gail's, Fina Bar & Grill, The Fountain, All Things Nice, and the Picturedrome foodhall.

Just half a mile away from the business village is The Tytherington Club, a prestigious country club and hotel, offering a stunning 18 hole golf course, spa facilities, swimming pool, gym, new padel courts and bar.

Alternatively, employees can enjoy a lunchtime walk on one of the many routes close to the business village. Take a breath of fresh air on a canal-side walk or head down Middlewood Way for an afternoon stroll.





 Sandalwood Court



TO MACCLESFIELD, STOKE-ON-TRENT & M6

TO STOCKPORT, M60, & MANCHESTER

BUS ROUTES 10 & 391

Momentum Instore

Alderley Analytical

PEAK PROTEINS

BIOSCRIPT GROUP

Fourth

Bright Horizons

Certus CARD GROUP

METRO ROD

Bodycote

LUCID GROUP

Beefeater

Premier Inn

THE TYTHERINGTON BY THE CLUB COMPANY

LOCATION

Tytherington Business Village lies adjacent to the A523 Silk Road, 2 miles north of Macclesfield. The M6, M60 & M56 motorways are within a short drive and provide excellent connectivity to Macclesfield town centre, Manchester Airport and surrounding areas.



TYTHERINGTON BUSINESS VILLAGE

Macclesfield's leading business village

SANDALWOOD COURT, Tytherington Business Village
Springwood Way, Macclesfield, SK10 2XA

Orbit
Developments

For full details call us on
01625 588 200 or email
orbit@emerson.co.uk

orbit-developments.co.uk
tytheringtonbusinessvillage.co.uk

Images are for illustrative purposes only and may not represent the exact office space available.

Developer reserves the right to change the scheme in the future. However, the Vendors / Lessors and Agents of intended as a general outline only, for the guidance of prospective purchasers or tenants, and do not constitute the whole or any part of an offer or contract. (2) They cannot guarantee the accuracy of any description, dimension or other details contained in these Particulars and prospective purchasers or tenants should not rely on them as statements of fact or representation, but must satisfy themselves as to the accuracy of such details. (3) No employee of the Agents has any authority to make or give any representation or warranty, or enter into any contract whatsoever in relation to the property (0126)