

54

MIDDLESEX TURNPIKE

Bedford, Massachusetts



9,008 SF

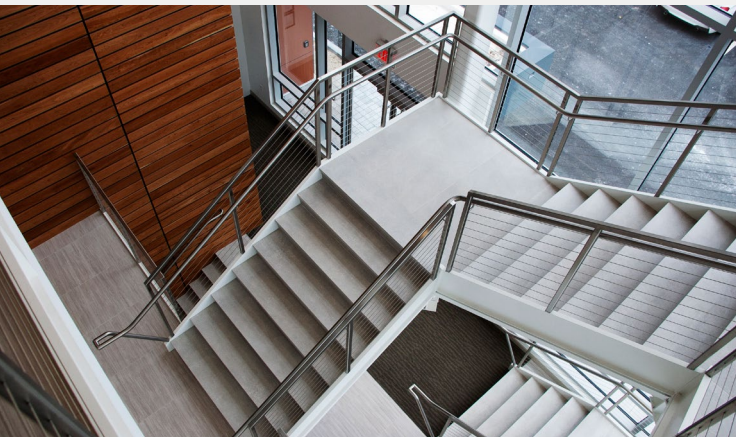
OF CLASS A OFFICE SPACE AVAILABLE

AVISON
YOUNG

ABOUT THE PROPERTY

Fully renovated and dramatically improved, 54 Middlesex provides tenants with an incredible office opportunity, complete with modern aesthetics and efficient, effective design.

Located within minutes of the amenities at 3rd Ave and the Burlington Mall, and with acres of corporate office parks in its backyard, 54 Middlesex offers unparalleled value for discerning tenants, their employees, and their customers.



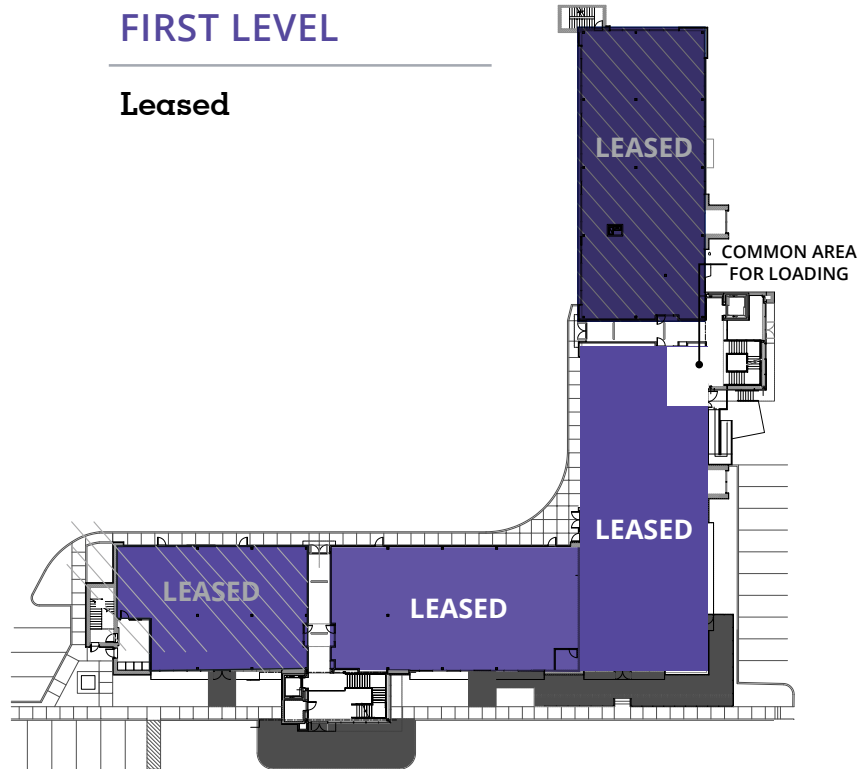
BUILDING HIGHLIGHTS

- BUILDING SIZE:** 48,470 SF
- AVAILABLE SF:** 2nd Floor Office: 9,008 SF
- LAND:** 6.6 Acres
- YEAR BUILT:** 2018
- LOBBY:** Two (2) - each with elevator
- LOADING:** Grade level loading
- WINDOW LINE:** 45' window to window, providing ample natural light
- SPRINKLER:** Wet sprinkler system
- PARKING:** 175 Parking Spaces



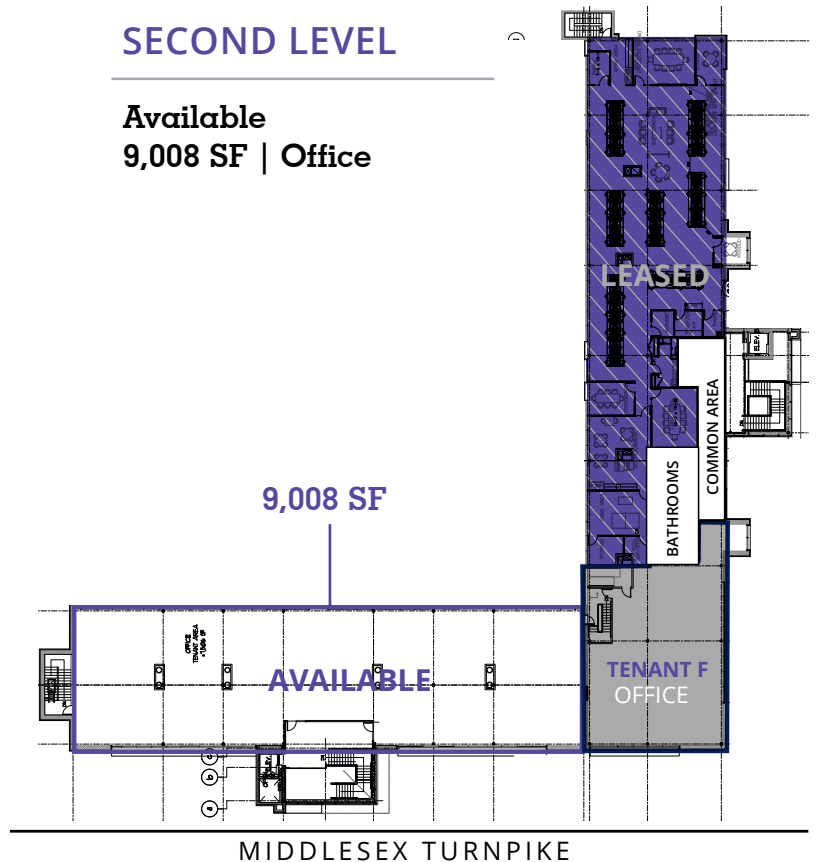
FIRST LEVEL

Leased



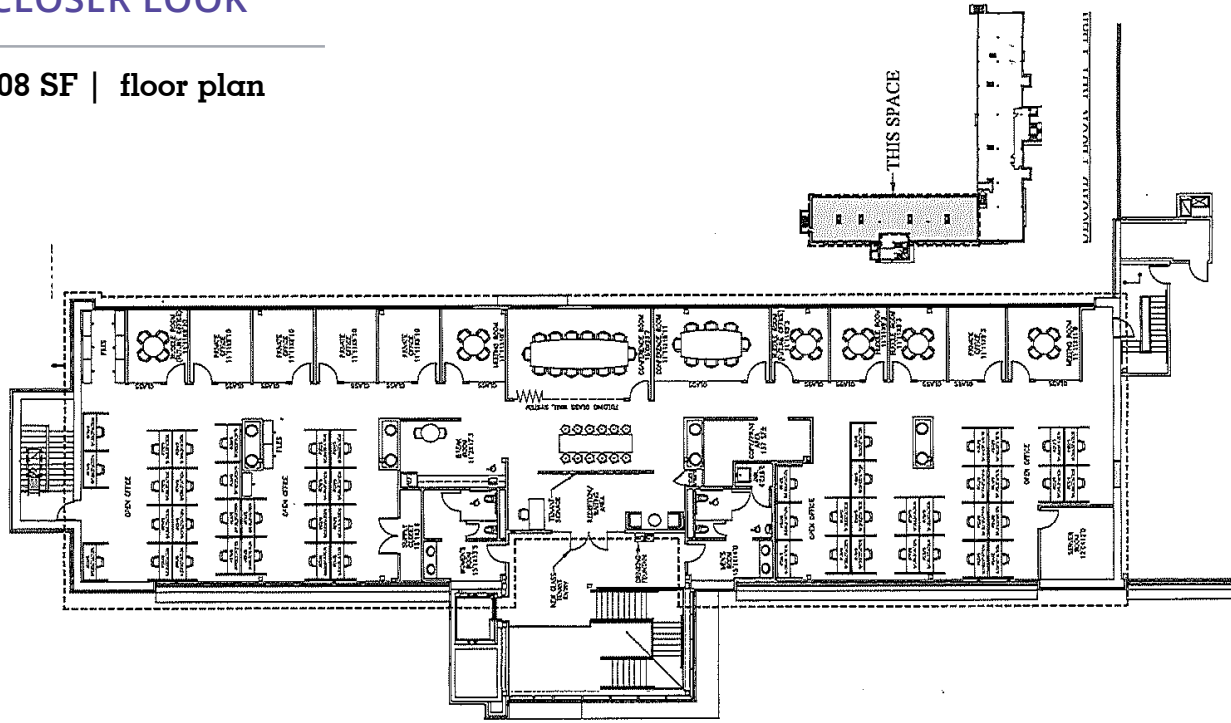
SECOND LEVEL

Available
9,008 SF | Office



A CLOSER LOOK

9,008 SF | floor plan





IN THE NEIGHBORHOOD

48 SEAT CONFERENCE CENTER

54 MIDDLESEX TURNPIKE
Bedford, Massachusetts



For more information, please contact:

Tom Aitken, Senior Vice President
617.462.2789
tom.aitken@avisonyoung.com

Chris Reilly, Senior Associate
781.956.8989
chris.reilly@avisonyoung.com

200 State Street | 15th Floor | Boston, MA

© 2026, Avison Young. Information contained herein was obtained from sources deemed reliable and, while thought to be correct, have not been verified. Avison Young does not guarantee the accuracy or completeness of the information presented, nor assumes any responsibility or liability for any errors or omissions therein. Some imagery may have been edited using AI tools for visualization purposes.

