

820 SECOND AVENUE

Between 43rd and 44th Streets

MIDTOWN EAST
MANHATTAN | NY



LOCATION

Between 43rd and 44th Streets

SPACE

Unit 6C: Approx. 2,740 R.S.F.

MAINTENANCE

\$23,340 per annum

TAXES (25/26)

\$26,668

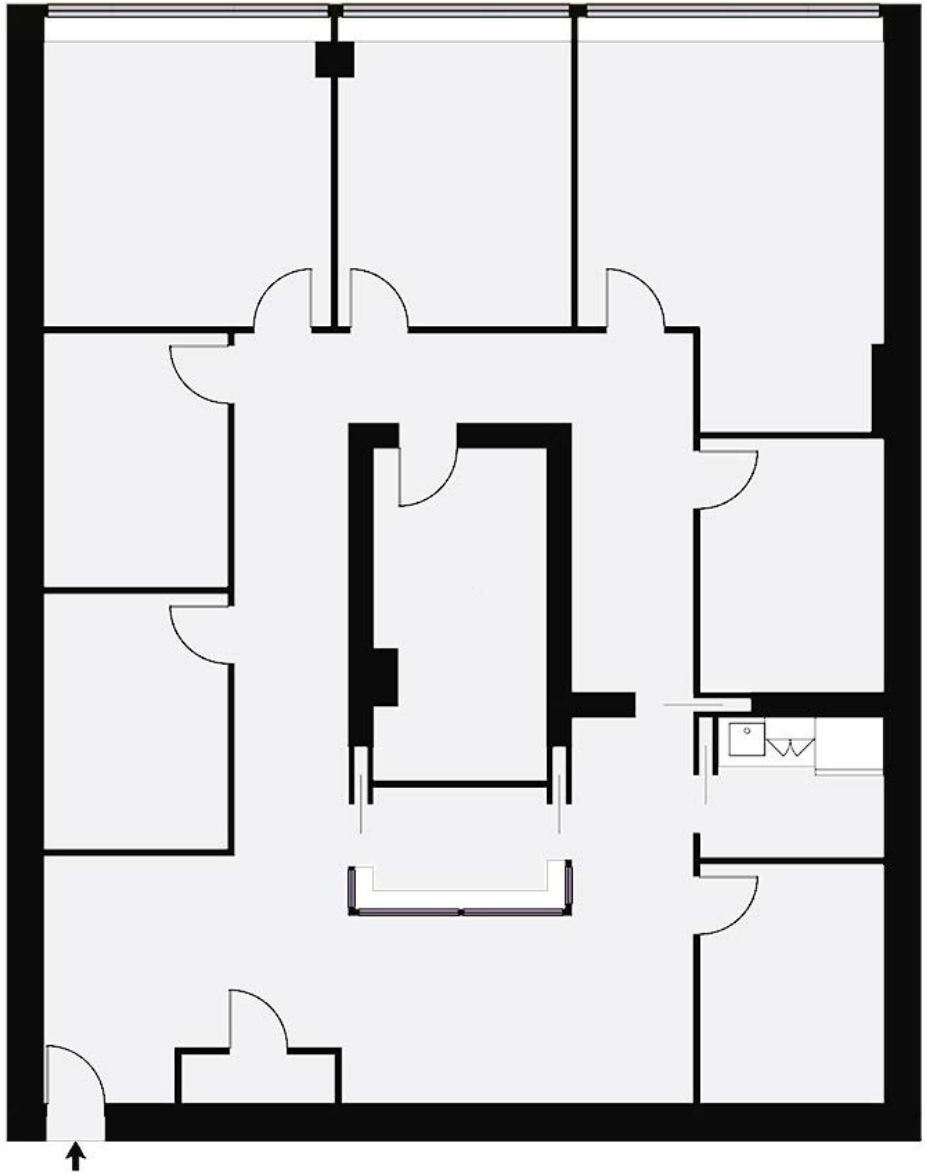
ASKING PRICE

\$1,200,000

PROPERTY DESCRIPTION

- Currently Northeast Regional Epilepsy Group
- Located two blocks from Grand Central Station
- Close proximity to the Ford Foundation Center, United Nations, Sparks Steak House, Sushi Yasuda, Chrysler Building, and One Vanderbilt

SUBWAY LINES





820 SECOND AVENUE

Points of Interest



GRAND CENTRAL STATION

Grand Central Station is a Beaux-Arts masterpiece and one of New York City's most iconic landmarks, known for its soaring Main Concourse and celestial ceiling. Opened in 1913, it serves as a major transportation hub while blending historic elegance with daily urban life. Beyond trains, it's a destination in itself, filled with shops, dining, and hidden architectural details.



42ND STREET

42nd Street is one of New York City's most famous thoroughfares, stretching from the Hudson River to the East River through the heart of Manhattan. It's a crossroads of culture and commerce, home to landmarks like Times Square, Grand Central Terminal, and Bryant Park. Constantly buzzing, the street captures the city's energy from theater marquees to office towers.



THE UNITED NATIONS

The United Nations is an international organization founded in 1945 to promote peace, security, and cooperation among nations. Its headquarters in New York City serves as a global meeting ground where world leaders gather to address issues like diplomacy, human rights, and climate change. Symbolically neutral territory, the UN represents collective dialogue on the world's most pressing challenges.

